

# University of Washington West Campus Site W27

Seattle, Washington

UWAC PRESENTATION

**WHERE WE HAVE BEEN**

# UWAC [RFP SUBMISSION] 01/31/2021



## WHAT WE HEARD:

\_SUCCESSFUL OUTCOME / CAPTIVATING

\_GROUND PLANE APPROACH IS RICH WITH IDEAS

\_THE INTERIOR VIEW OF TAHOMA IS COMPELLING

\_DO THE ARCHITECTURAL MOVES CORRESPOND WITH THE USES?

\_EDIT AND SIMPLIFY

\_HONOR DON'T REPLICATE THE COAST SALISH REFERENCES



## WHAT WE HEARD:

\_ADDRESSES THE CHALLENGES OF THE SITE:  
MOVEMENT THROUGH THE BUILDING IS SUCCESSFUL

\_PODIUM LEVEL IS IMPROVED WITH INCREASED  
TRANSPARENCY

\_LOOKS LIKE A CORPORATE OFFICE BUILDING

\_SIMPLIFIED MASSING RESULTED IN PODIUM / TOWER

\_MATERIALITY COULD HELP DISTINGUISH THE  
PODIUM AND THE TOWER

\_LACK OF CLARITY IN THE DESIGN CONCEPT



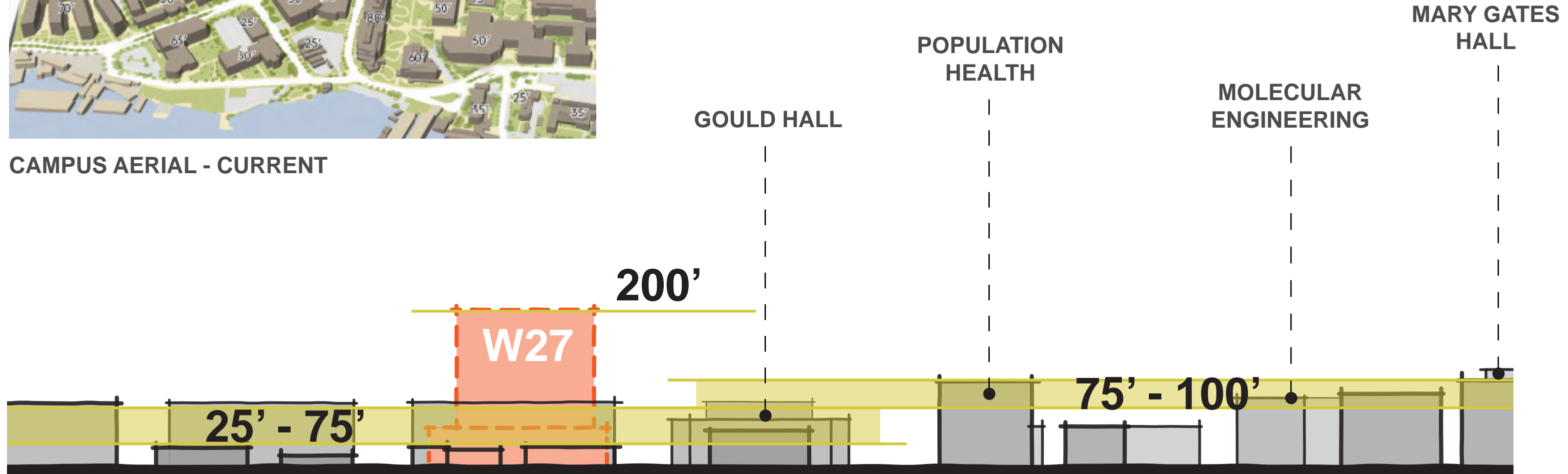
**CONTEXT + CONCEPT**

# CAMPUS CONTEXT

## EXISTING



CAMPUS AERIAL - CURRENT



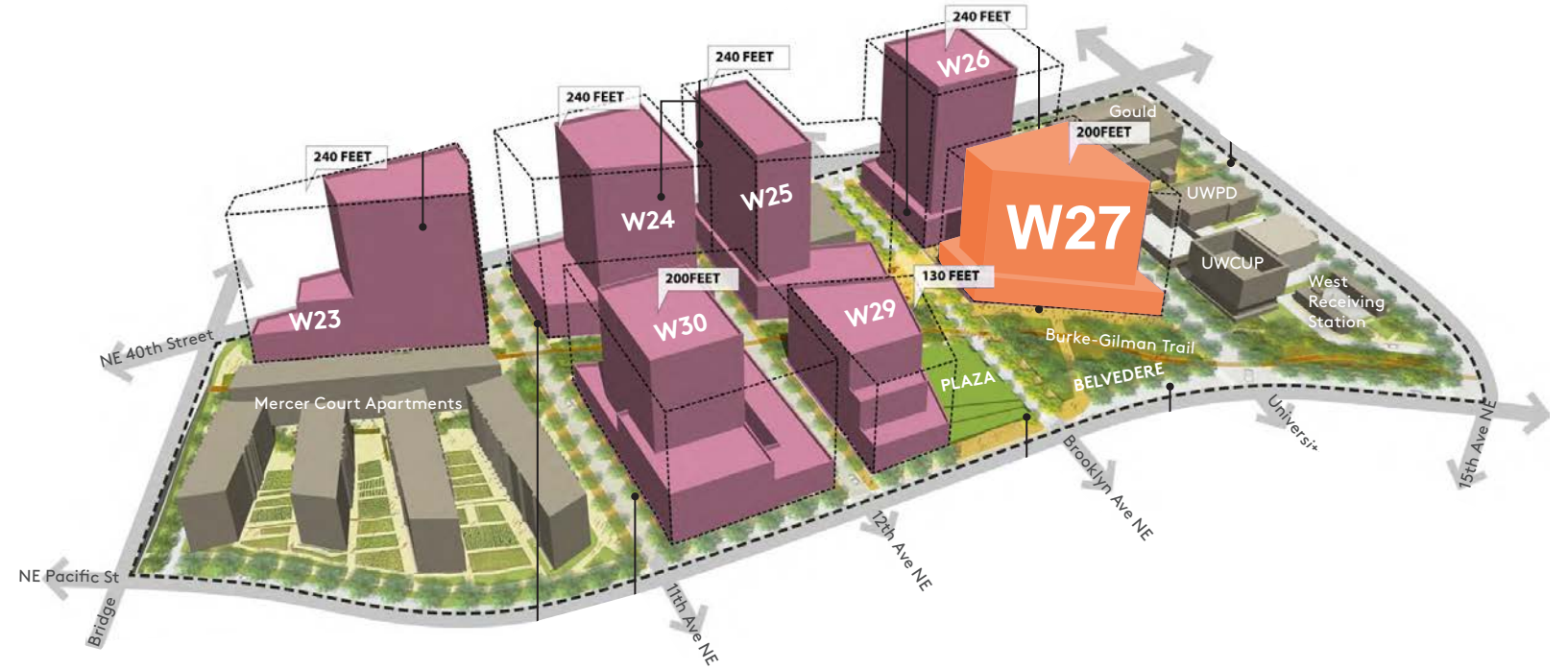
SITE SECTION - CURRENT

# CAMPUS CONTEXT

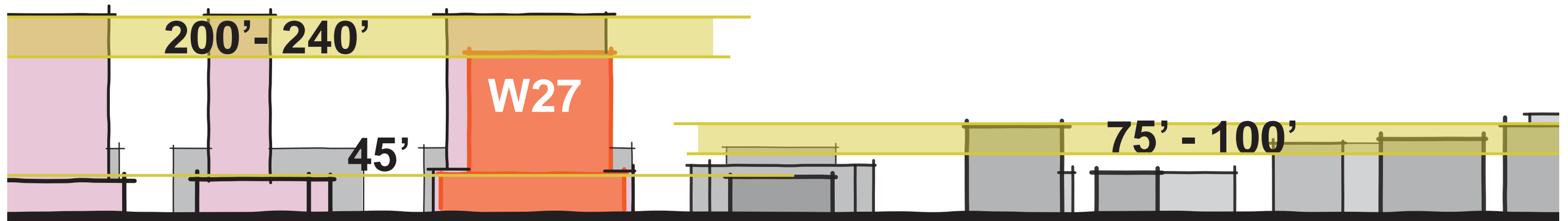
## FUTURE



CAMPUS AERIAL - FUTURE

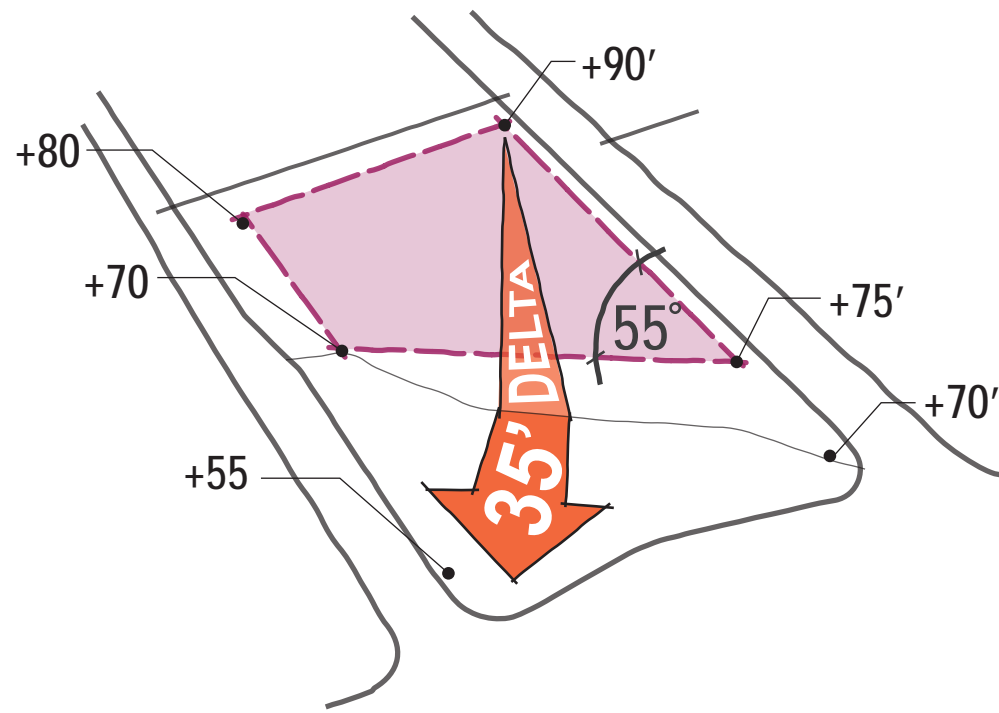


WEST CAMPUS EXPANSION

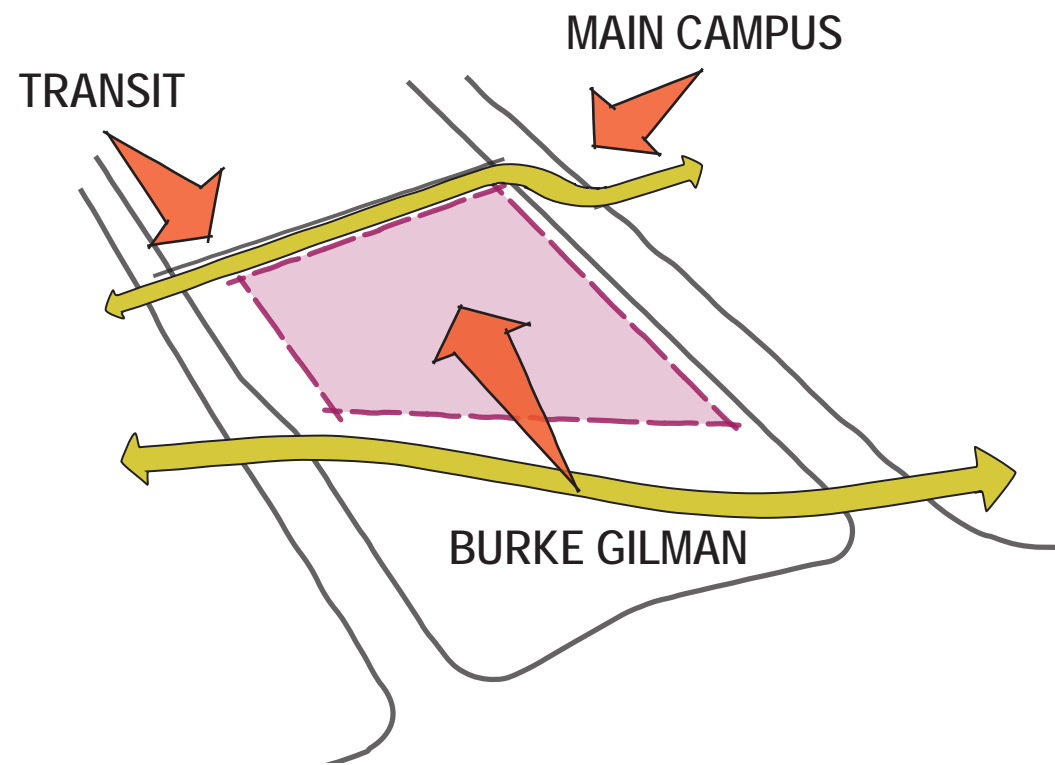


SITE SECTION - FUTURE

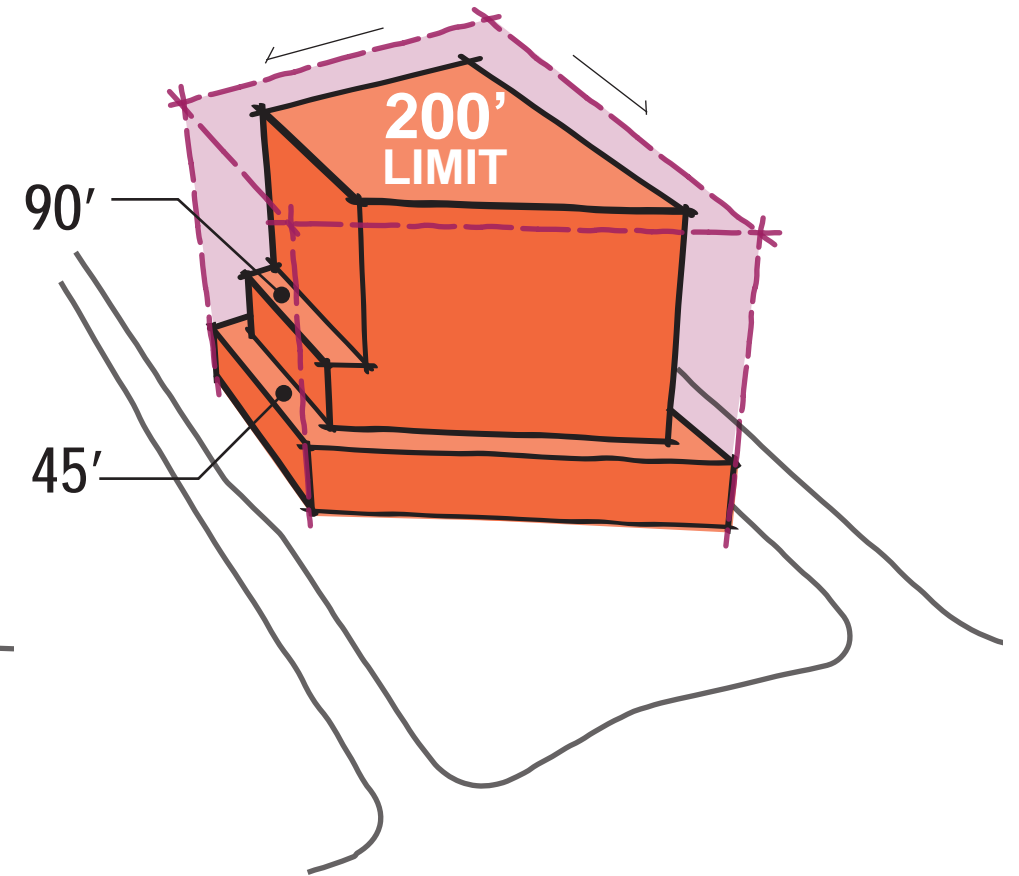
# SITE CONDITIONS



SLOPE + SHAPE



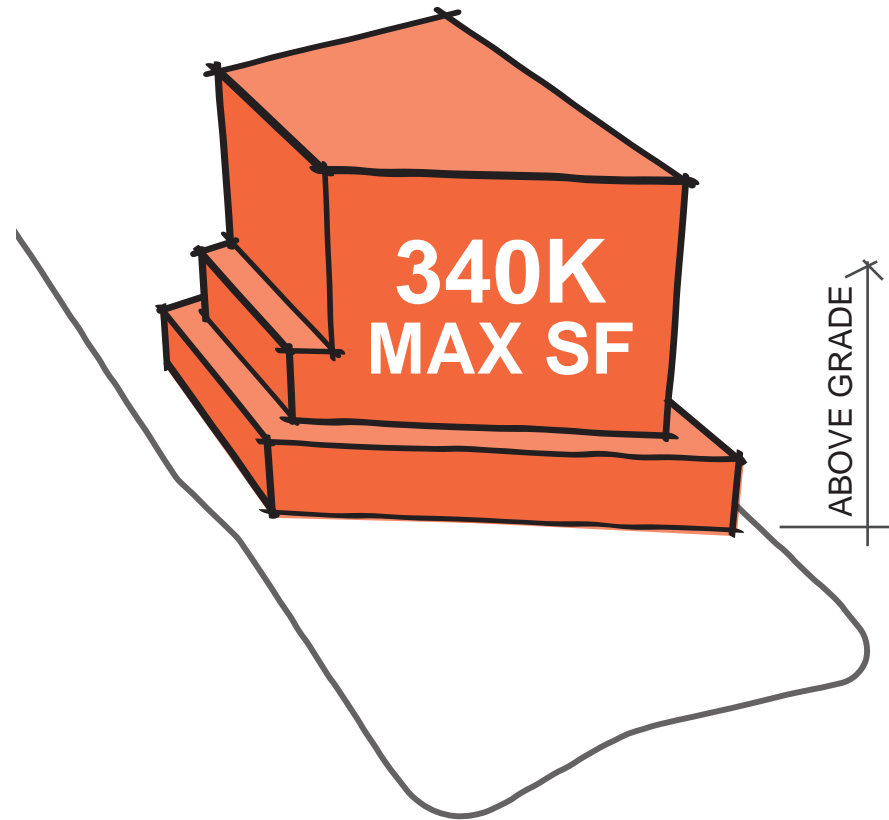
ACCESS



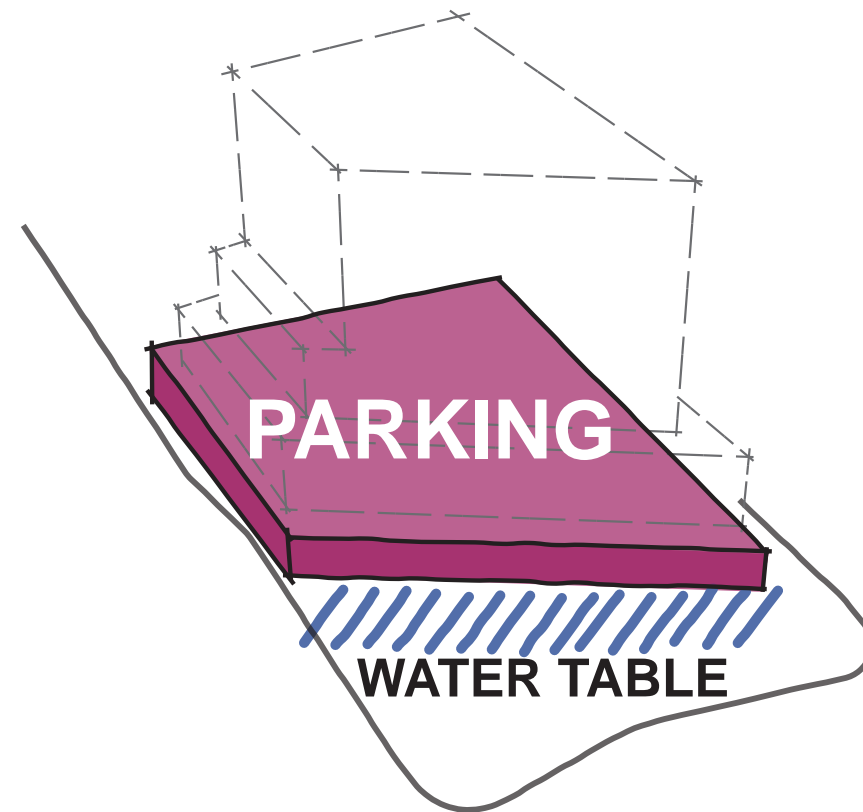
ZONING ENVELOPE



# PARTNERSHIP



ZONING MAX



BELOW GRADE



# WEXFORD KNOWLEDGE COMMUNITY ELEMENTS

Are defined by the integration of university research, entrepreneurial activity, corporate engagement, and community participation into a dynamic ecosystem.



INDUSTRY

ACADEMIC

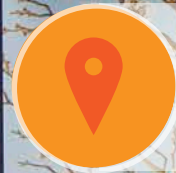
INNOVATION SUITES

COMMUNITY ENGAGEMENT

ACTIVATED LOBBY



# WEXFORD APPROACH



Reflect Local Culture



Innovation + Collaboration



Foster Community



Flexibility + Adaptability



Technology Enhanced

# W27 KNOWLEDGE COMMUNITY ELEMENTS



INDUSTRY

UW PARTNERS

WEXFORD INNOVATION LABS

CEI TEST BEDS

UW CLASSROOMS & FLEX SPACE

ACTIVATED LOBBY

RETAIL



# COAST SALISH VALUES

## Connection

Cultivating harmonious relationships with the natural world

## Stewardship

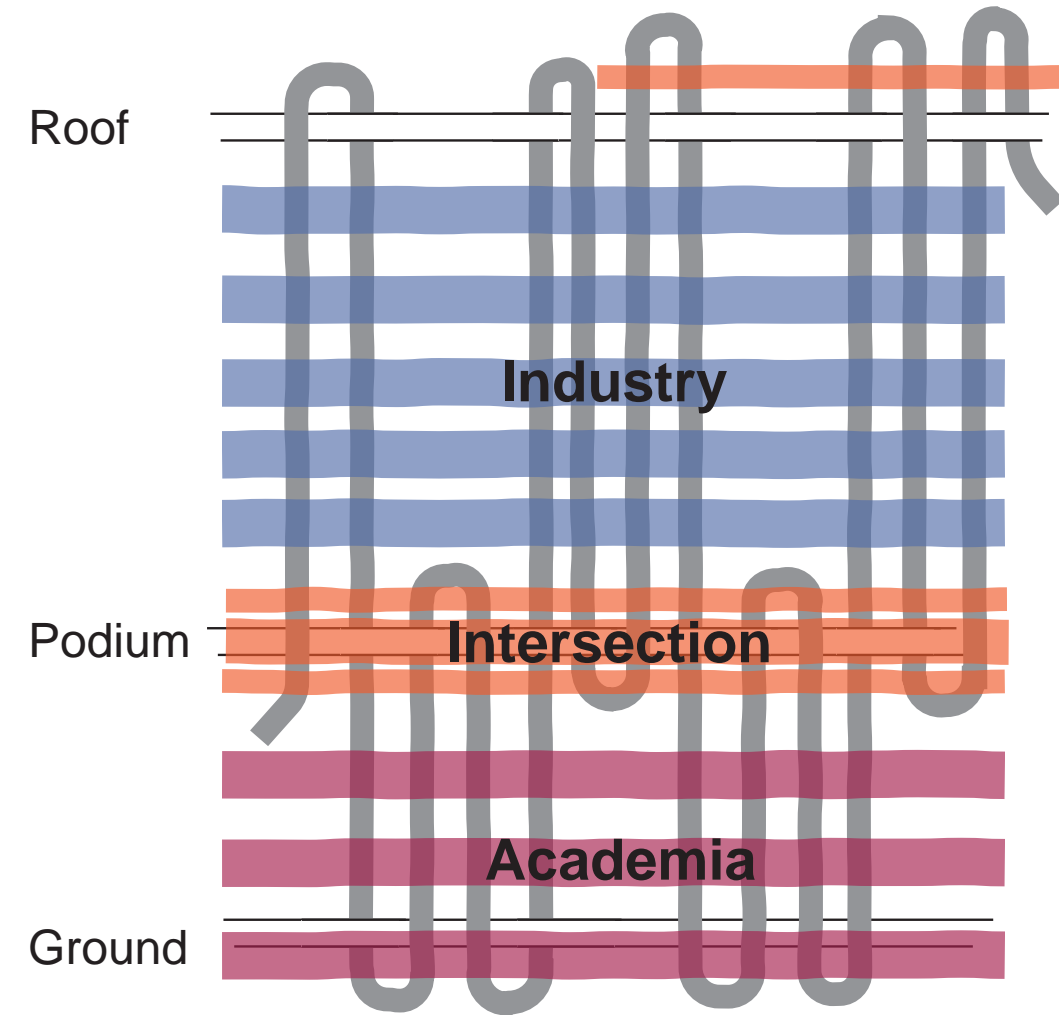
Fostering indigenous habitats and promoting innovation to protect our environment.

## Collaboration

Creating community through shared goals/work and spaces that bring people together

# BUILDING CONCEPT

## WEAVING



# BUILDING CONCEPT

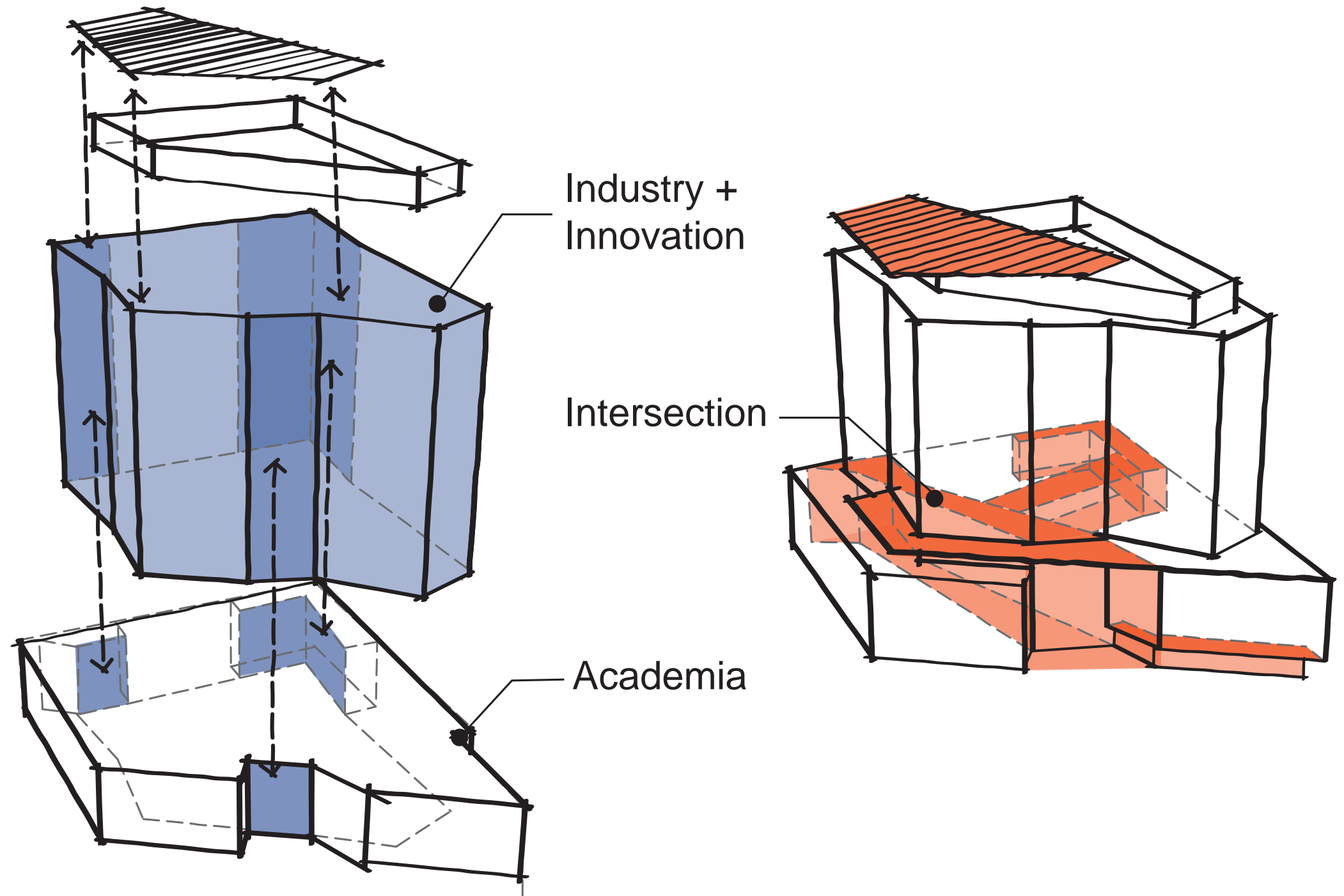
## COLLABORATION

### Intersecting Knowledge Communities

\_Academic Program  
Pedestrian Podium

\_Industry Spaces  
Elevated Tower

\_Intersection Academia + Industry  
Community Spaces

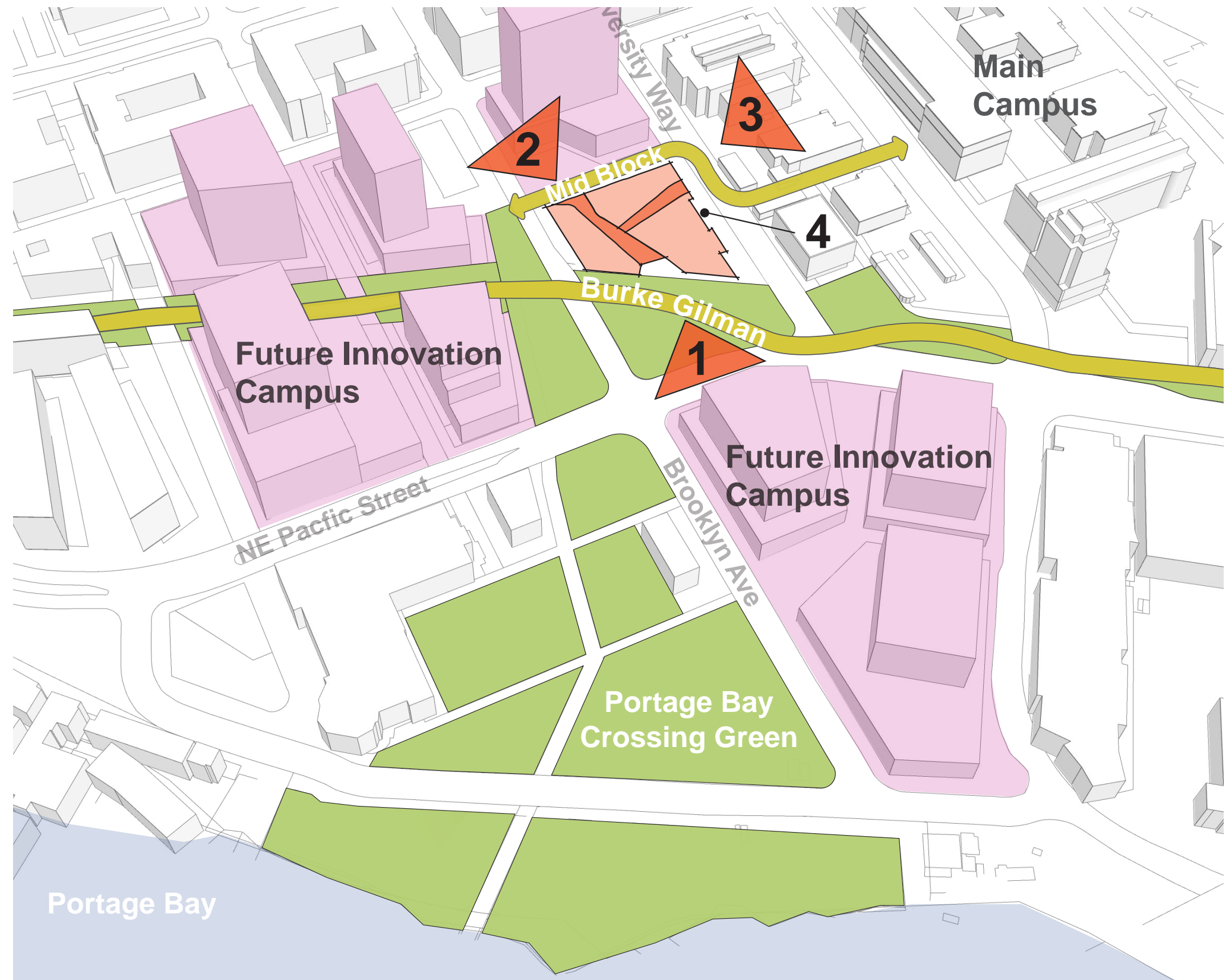


# PROJECT CONCEPT

## CONNECTIONS

### Campus Connections

- 1\_ Primary: Front Porch/Landscape
- 2\_ Mid-Block: To Transit Hub
- 3\_ University: Campus
- 4\_ Service: Parking & Loading



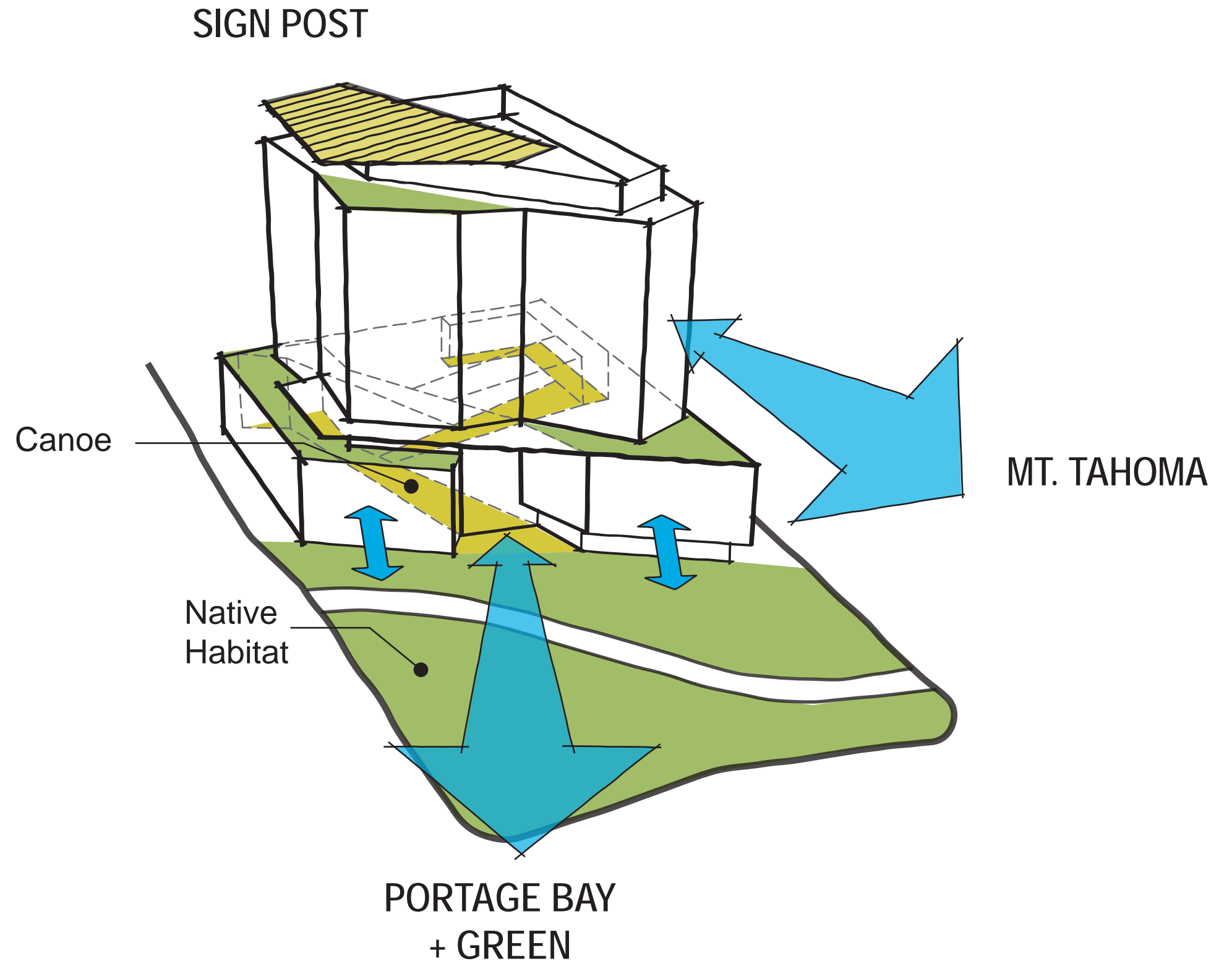


# PROJECT CONCEPT

## CONNECTIONS

### Honoring Coast Salish Values

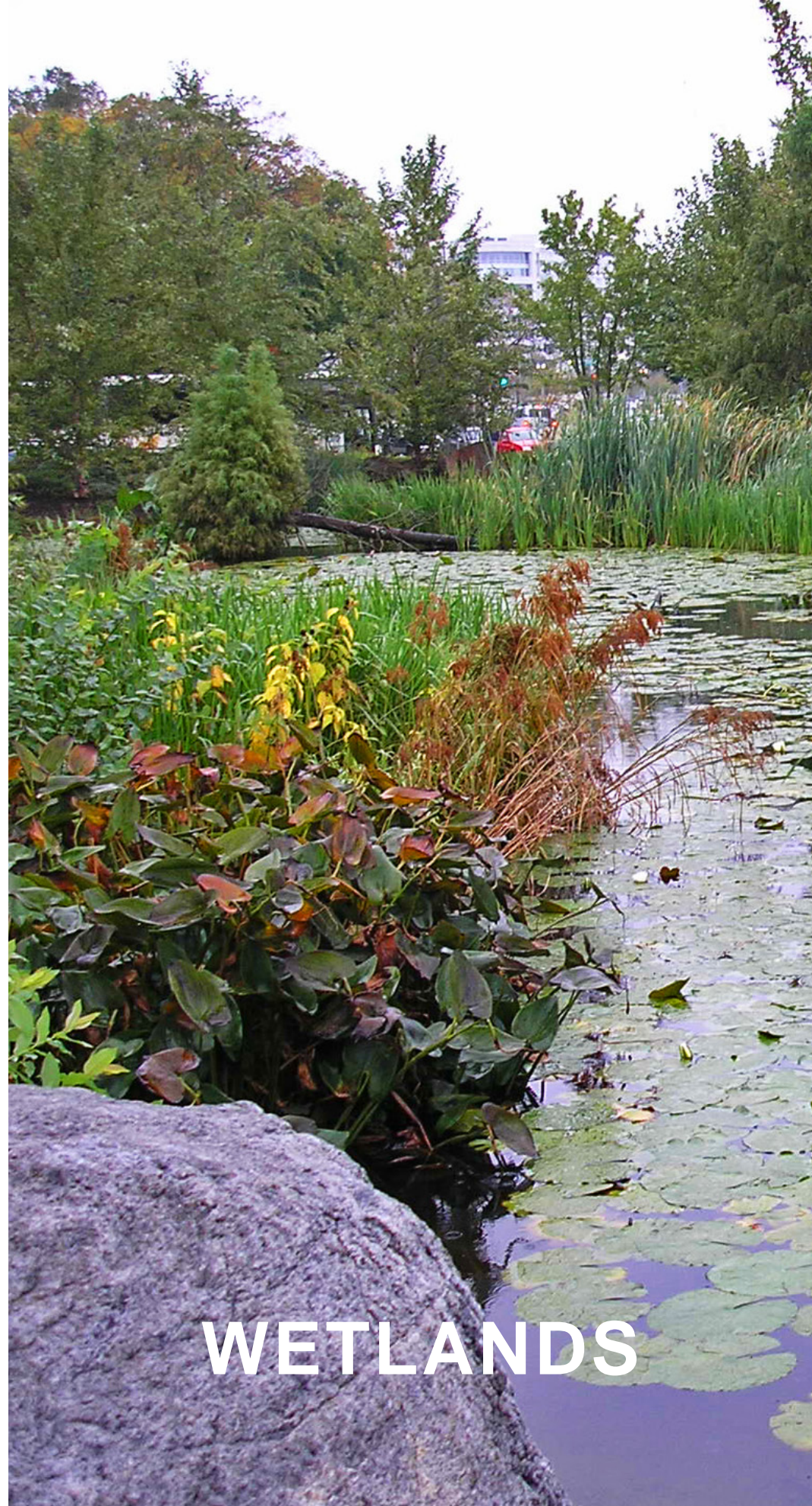
- \_Orient Building to Landscape + Views
- \_Return to Native Habitats
- \_Blend Interior + Exterior Spaces
- \_Foster Collaboration + Community



LANDSCAPE CONCEPT  
STEWARDSHIP



FOREST EDGE



WETLANDS






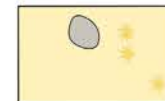

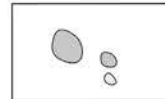
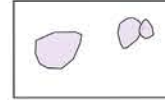
STONE MEADOW

# LANDSCAPE PLAN



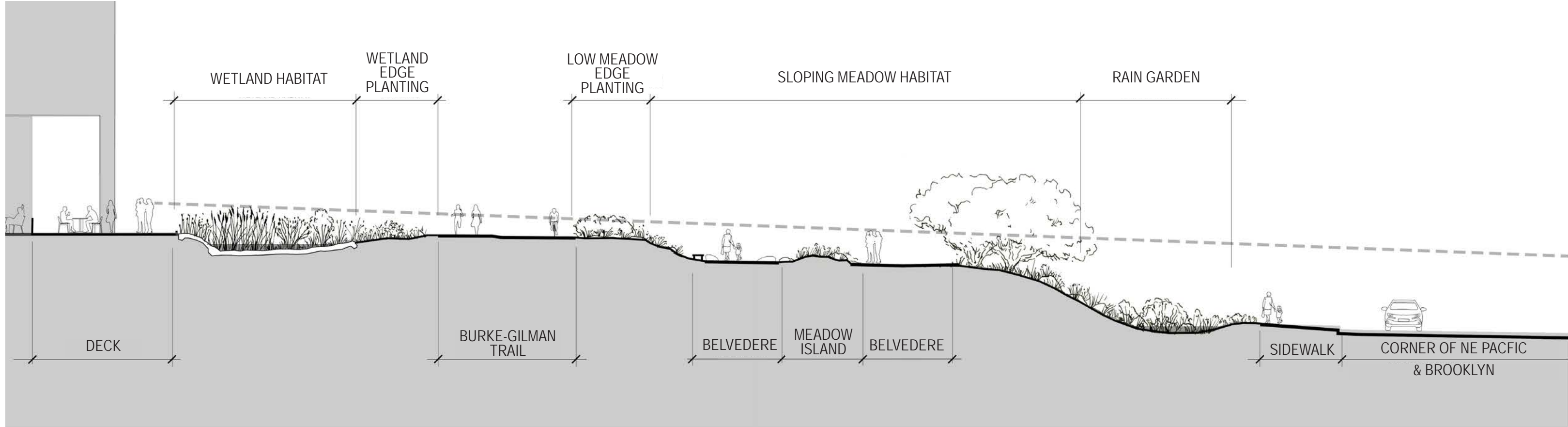
SCALE: 0 16' 32' 100 FEET  
2021-10-22

## LEGEND

-  FOREST HABITAT
-  FOREST EDGE HABITAT
-  WETLAND / RIPARIAN HABITAT
-  MEADOW HABITAT
-  Dashed = Existing Tree to be Saved
-  WEATHERED ROCKS  
Meadow and Wetland / Riparian Habitats
-  ANGULAR ROCKS  
Forest / Forest Edge Habitats

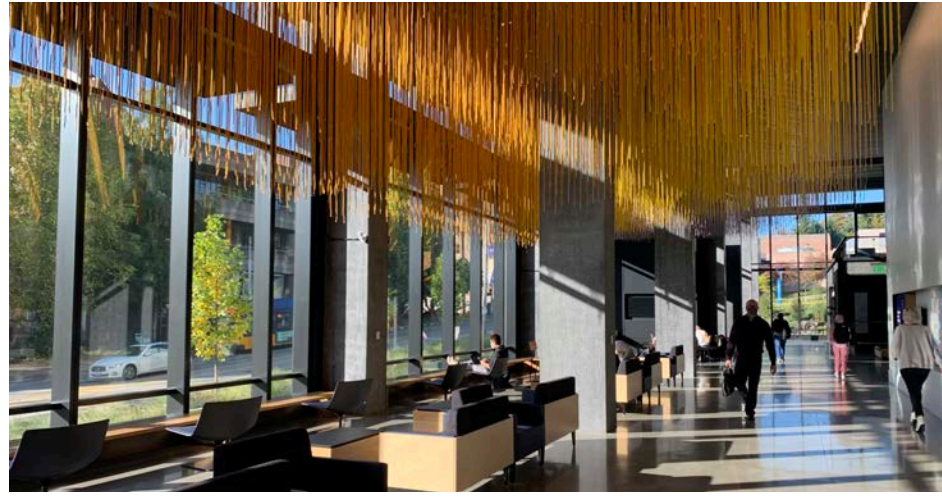
# LANDSCAPE SECTION

## STEWARDSHIP



# ACTIVATED GROUND PLAN

## INSIDE / OUTSIDE



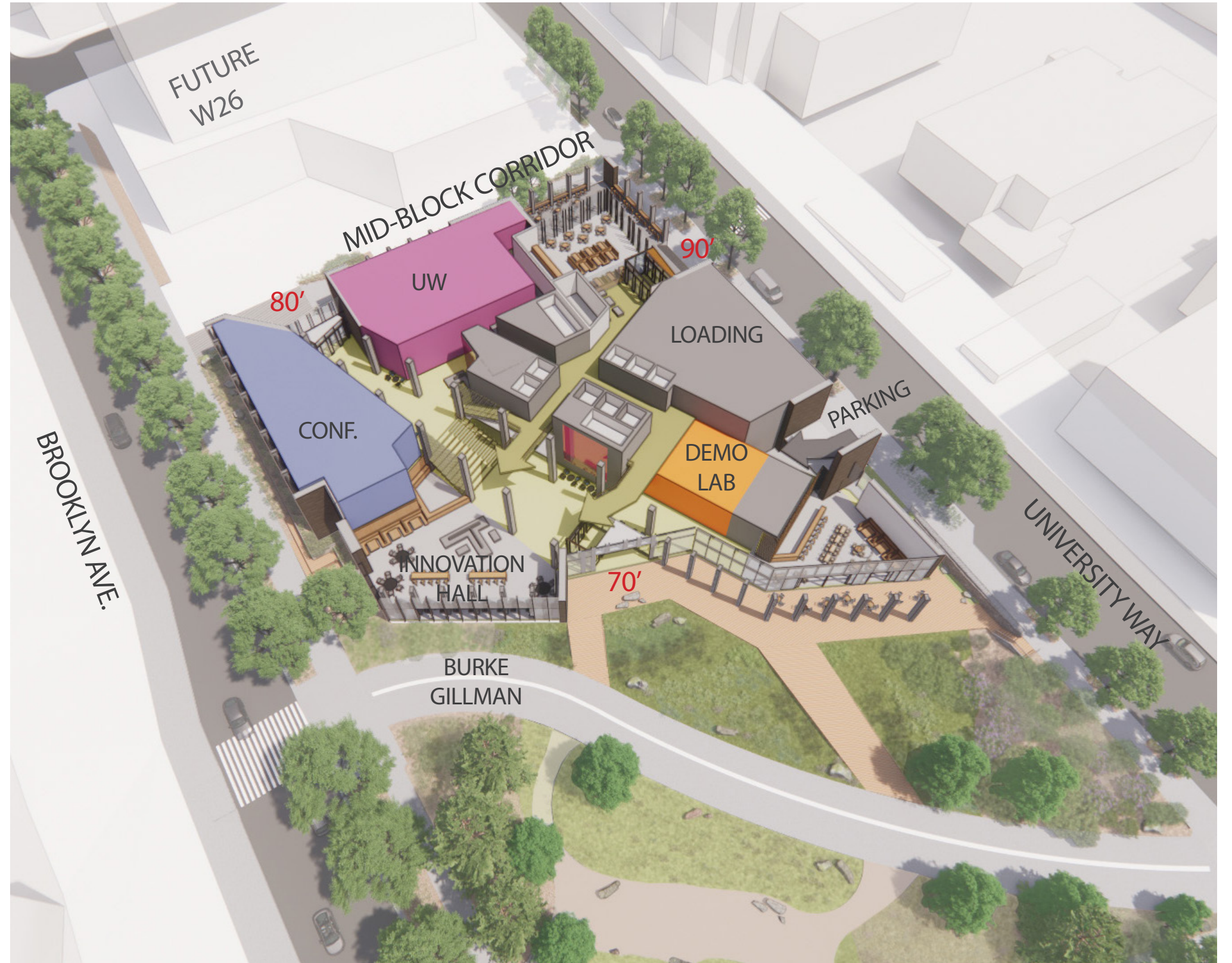
POPULATION HEALTH \_ MILLER HULL



CALTECH BETCHEL RESIDENCE\_ZGF

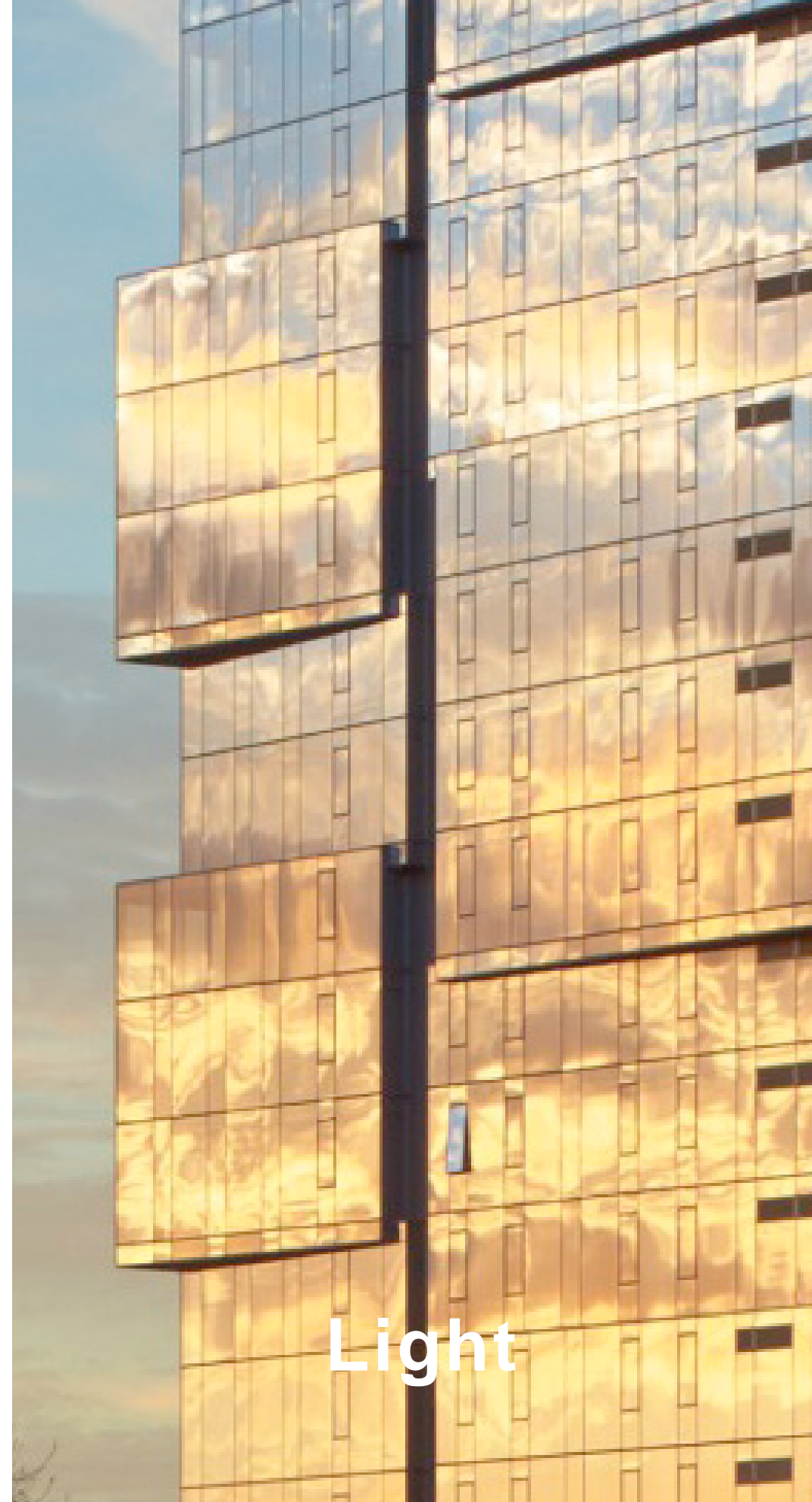


ST ANTHONY HOSPITAL\_ZGF



PLACE SPECIFIC

Craft



Light



Environment

# MATERIALITY

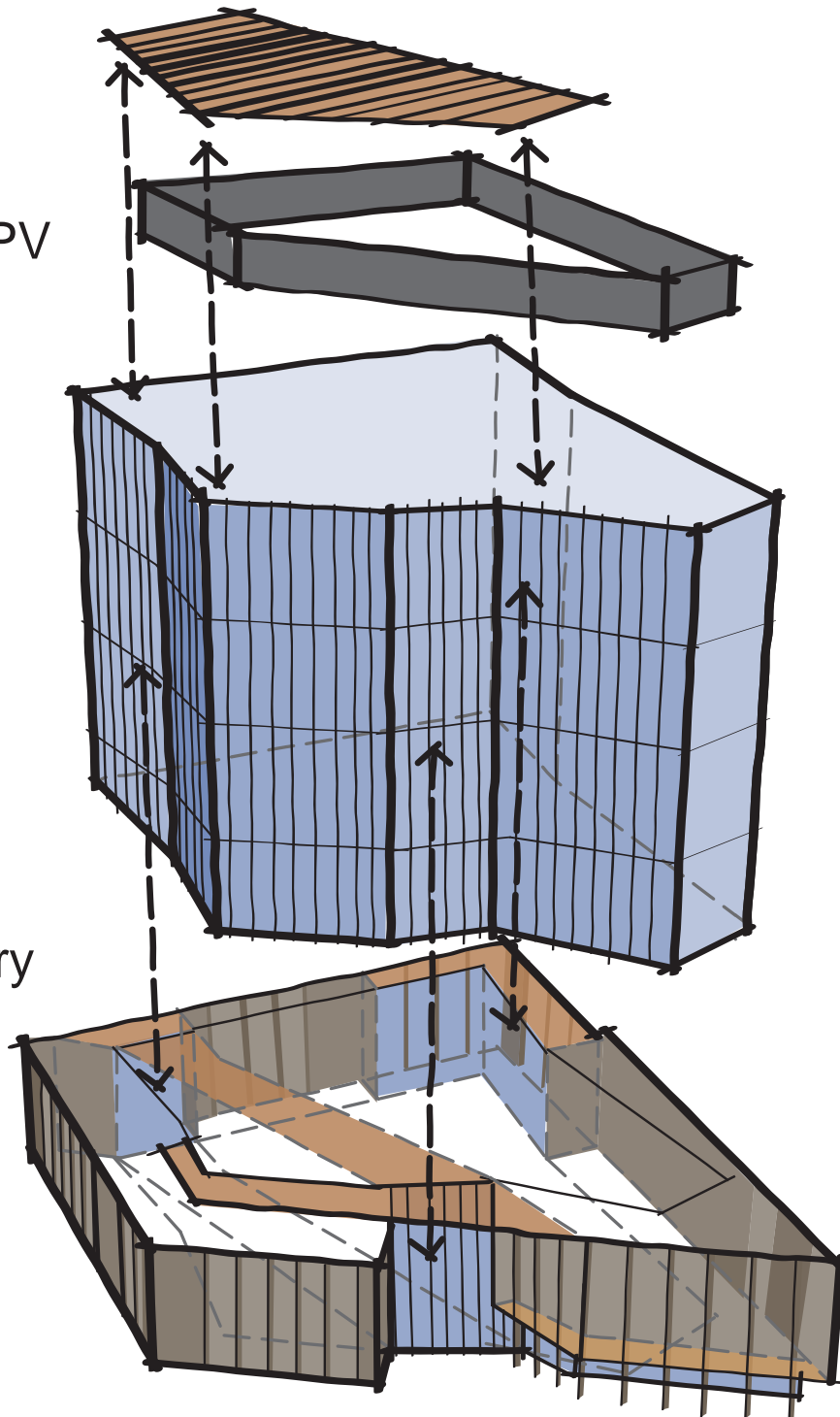
## WEAVING



Wood  
Metal  
Glass PV

Glass  
Metal

Masonry  
Wood  
Glass  
Metal



GLASS



METAL



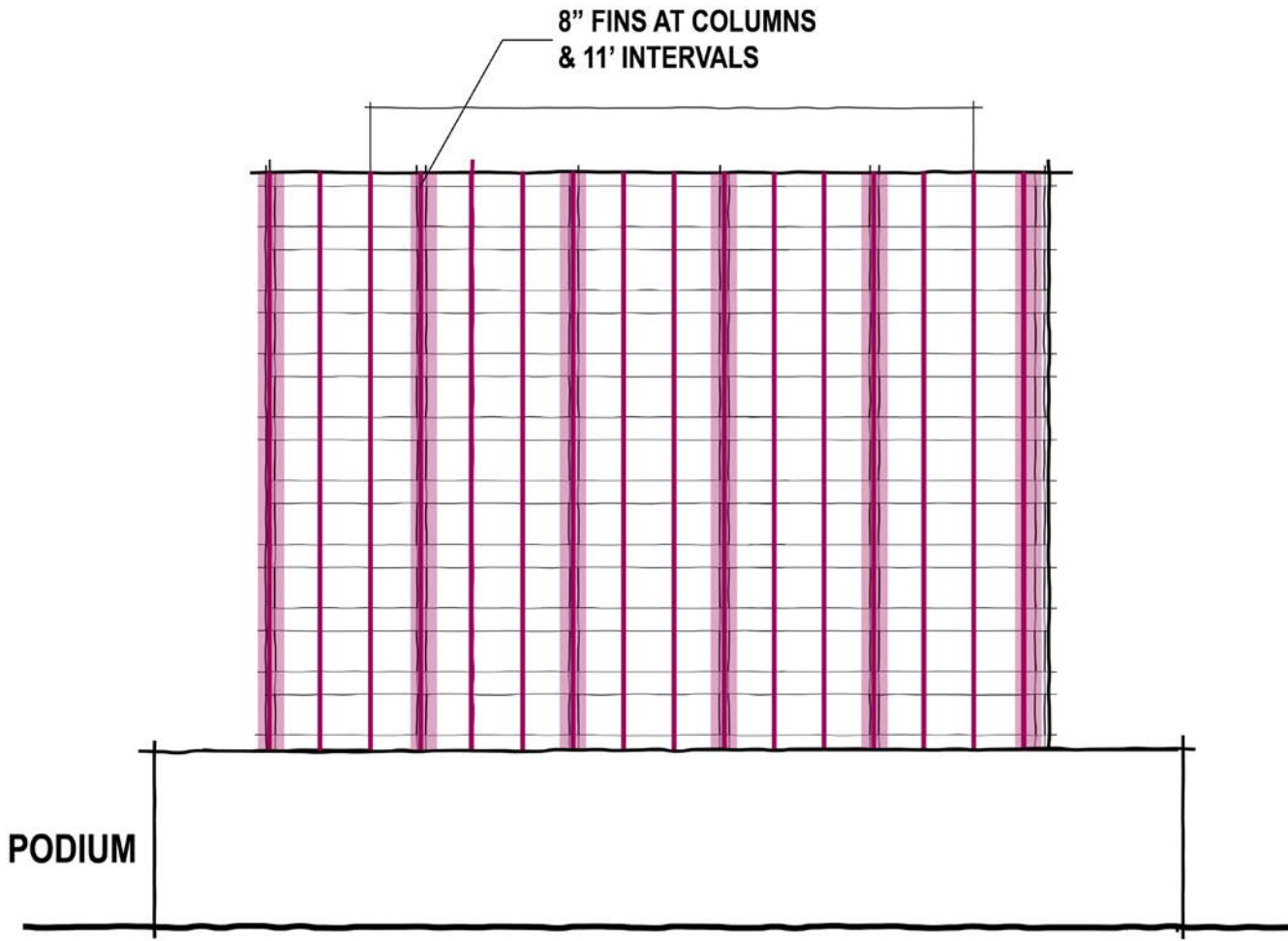
WOOD SOFFITS/ACCENTS



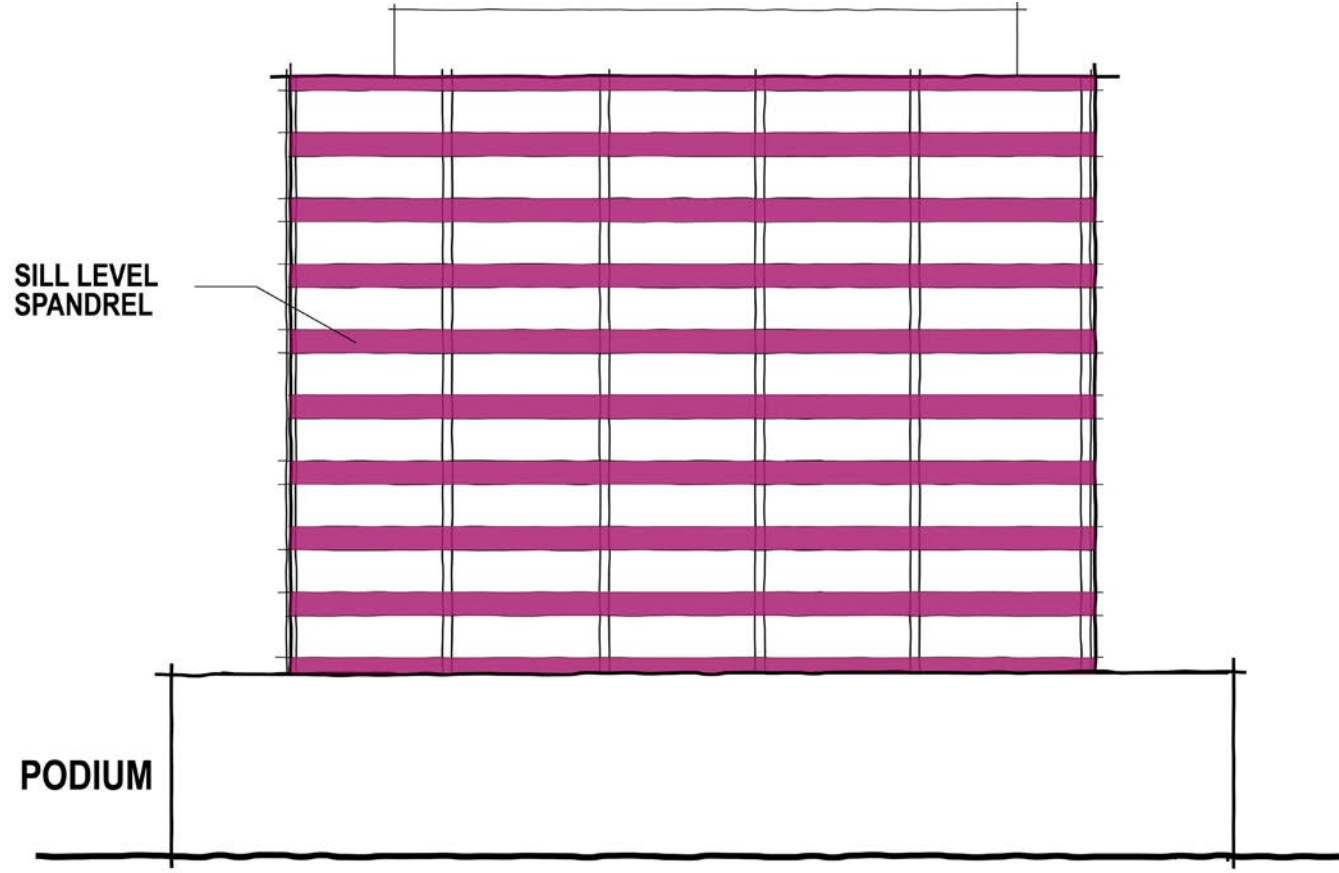
MASONRY

# TOWER ELEMENTS

WEAVING, DEPTH + TEXTURE, PLAY OF LIGHT



COLUMNS AND PRIMARY FINS

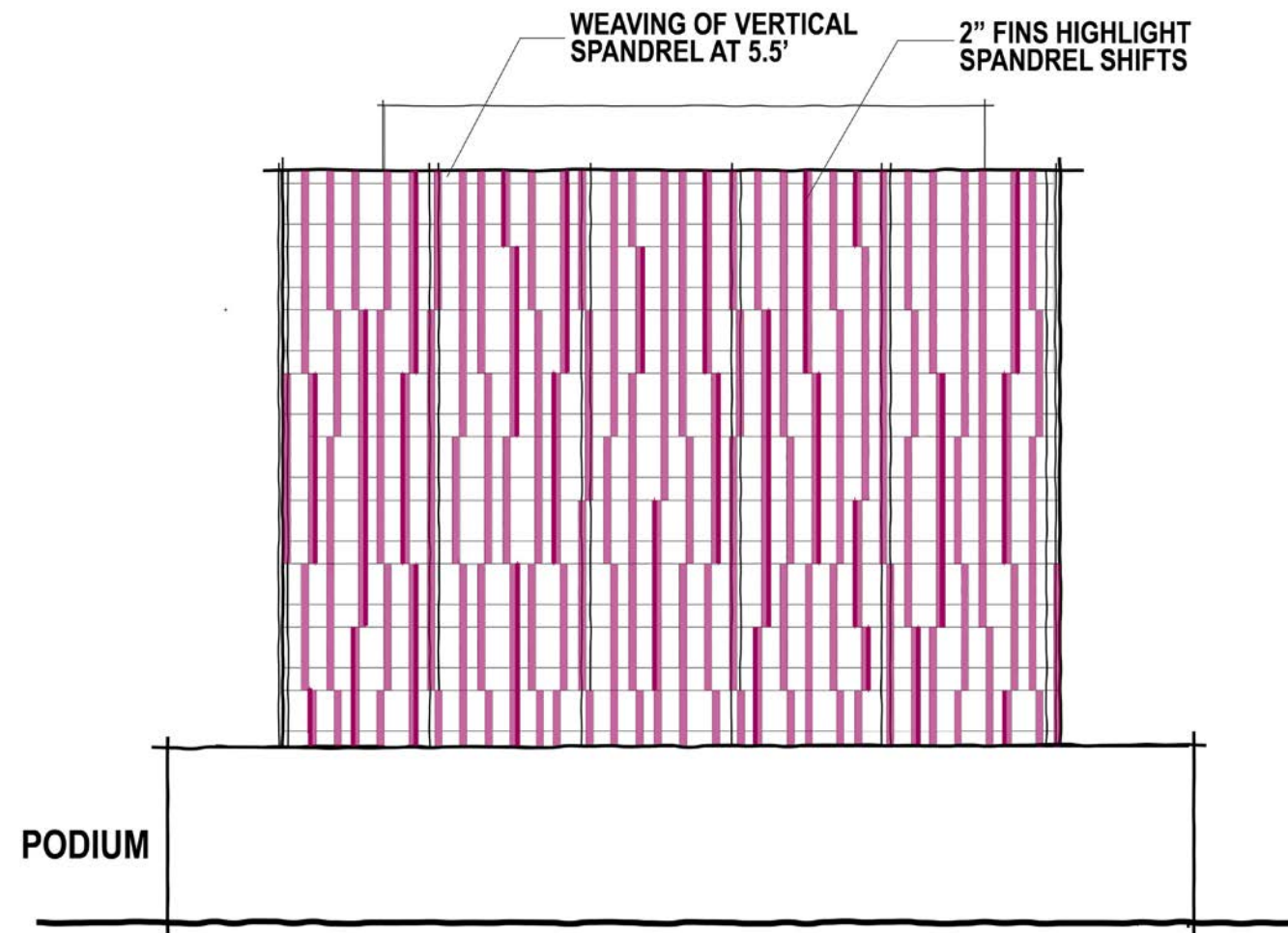


HORIZONTAL SPANDREL

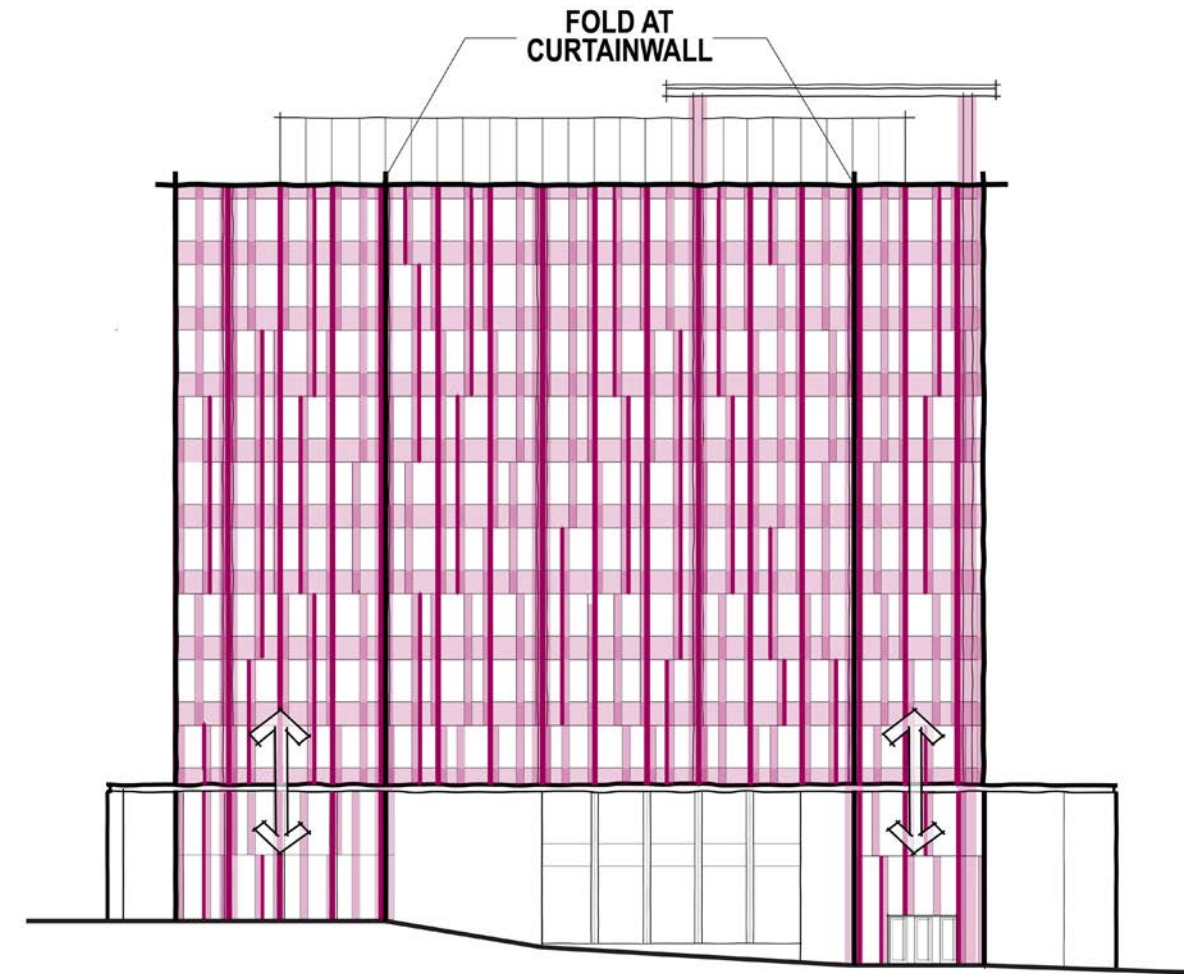


# TOWER ELEMENTS

WEAVING, DEPTH + TEXTURE, PLAY OF LIGHT



SECONDARY FINS AND VERTICAL SPANDREL



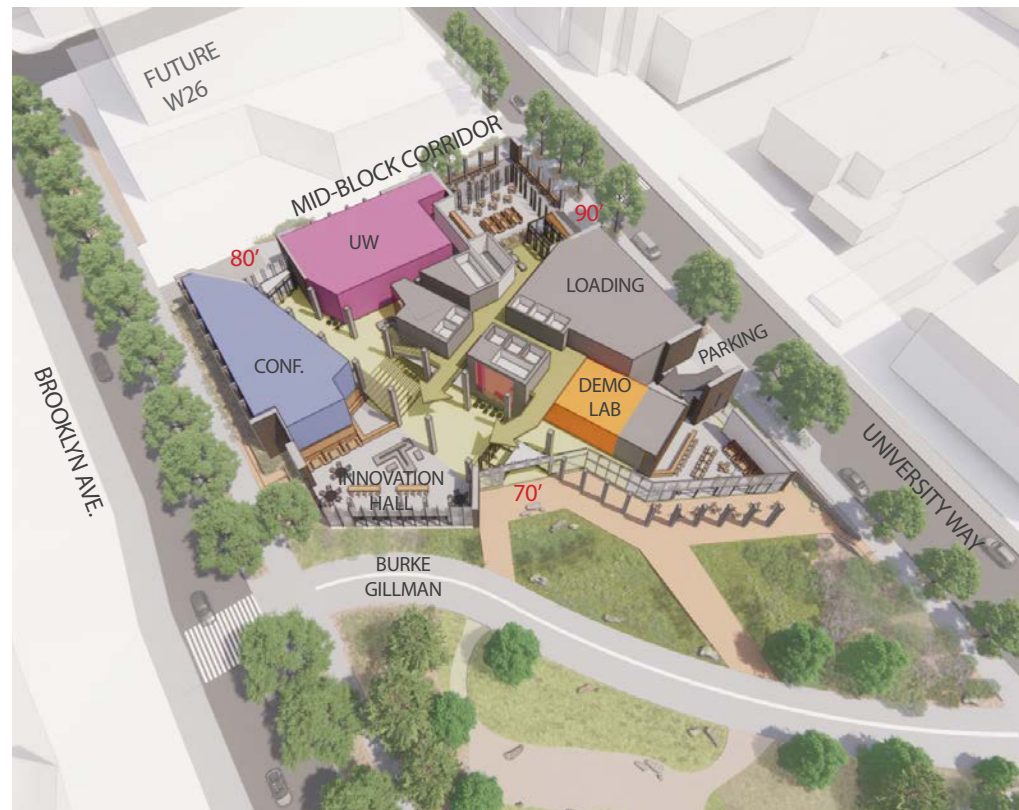
ALL TOGETHER

...CURRENT DESIGN

# LEVEL 01

+70' / 80'

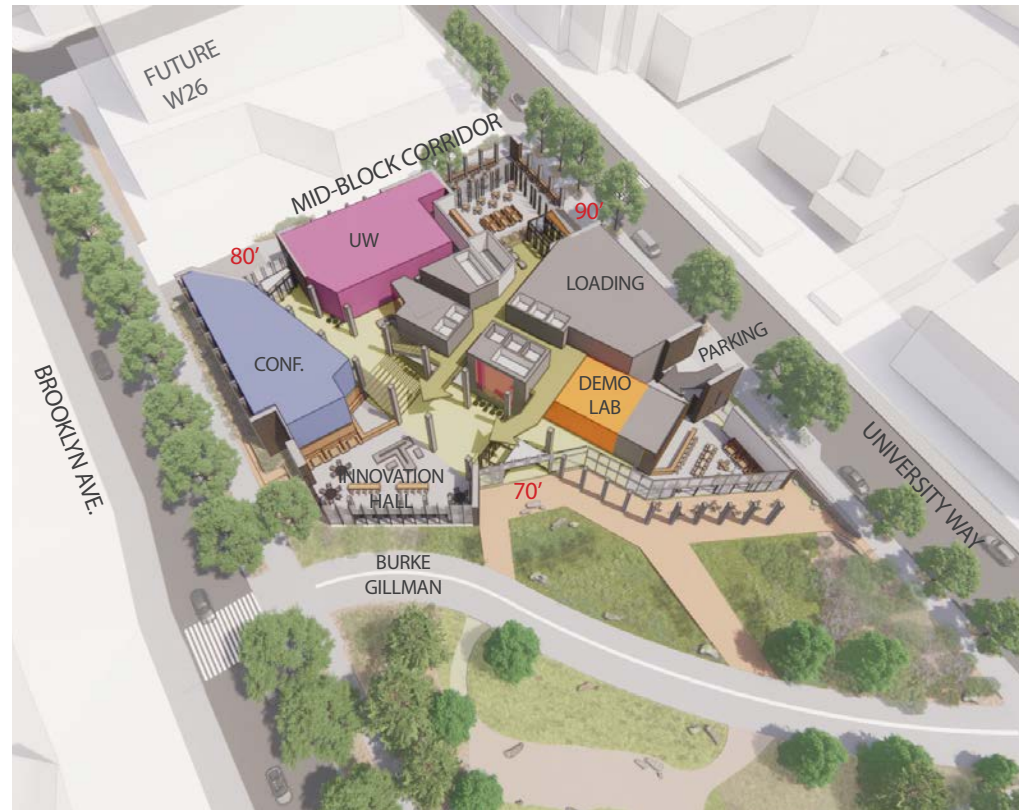
- 1\_ Seamless Ground Plane
- 2\_ Places to Gather
- 3\_ Art Opportunities



# LEVEL 02

+90'

- 1\_ University Connection
- 2\_ Midblock Porch
- 3\_ Bridges / Overlook



# ENTRY VIEW FROM BURKE GILLMAN



# BURKE GILLMAN ALONG BROOKLYN



# INNOVATION HALL INSIDE / OUTSIDE



# NORTH ENTRY FROM BROOKLYN





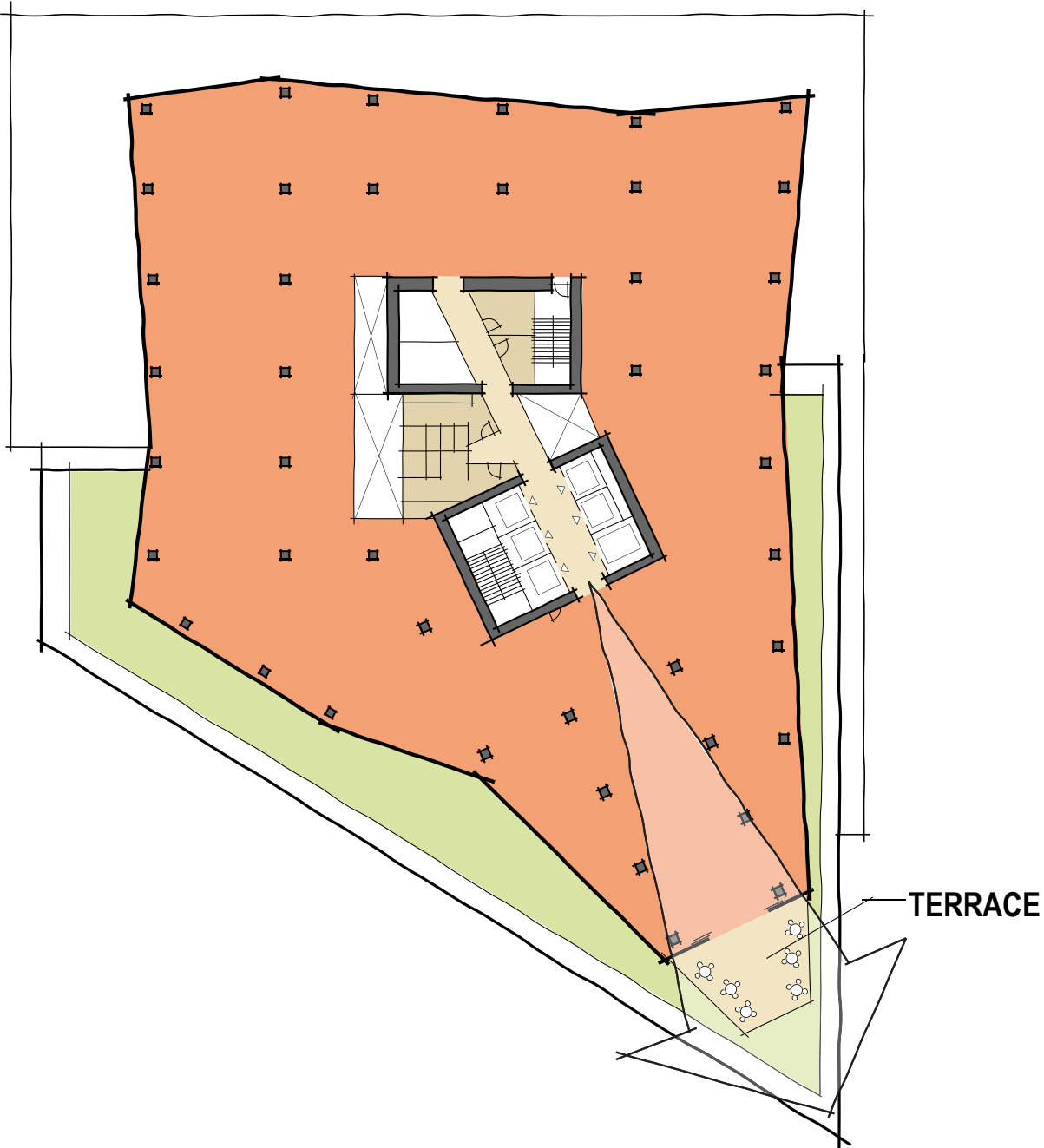
# ENTRY VIEW AT UNIVERSITY



# ENTRY VIEW AT UNIVERSITY

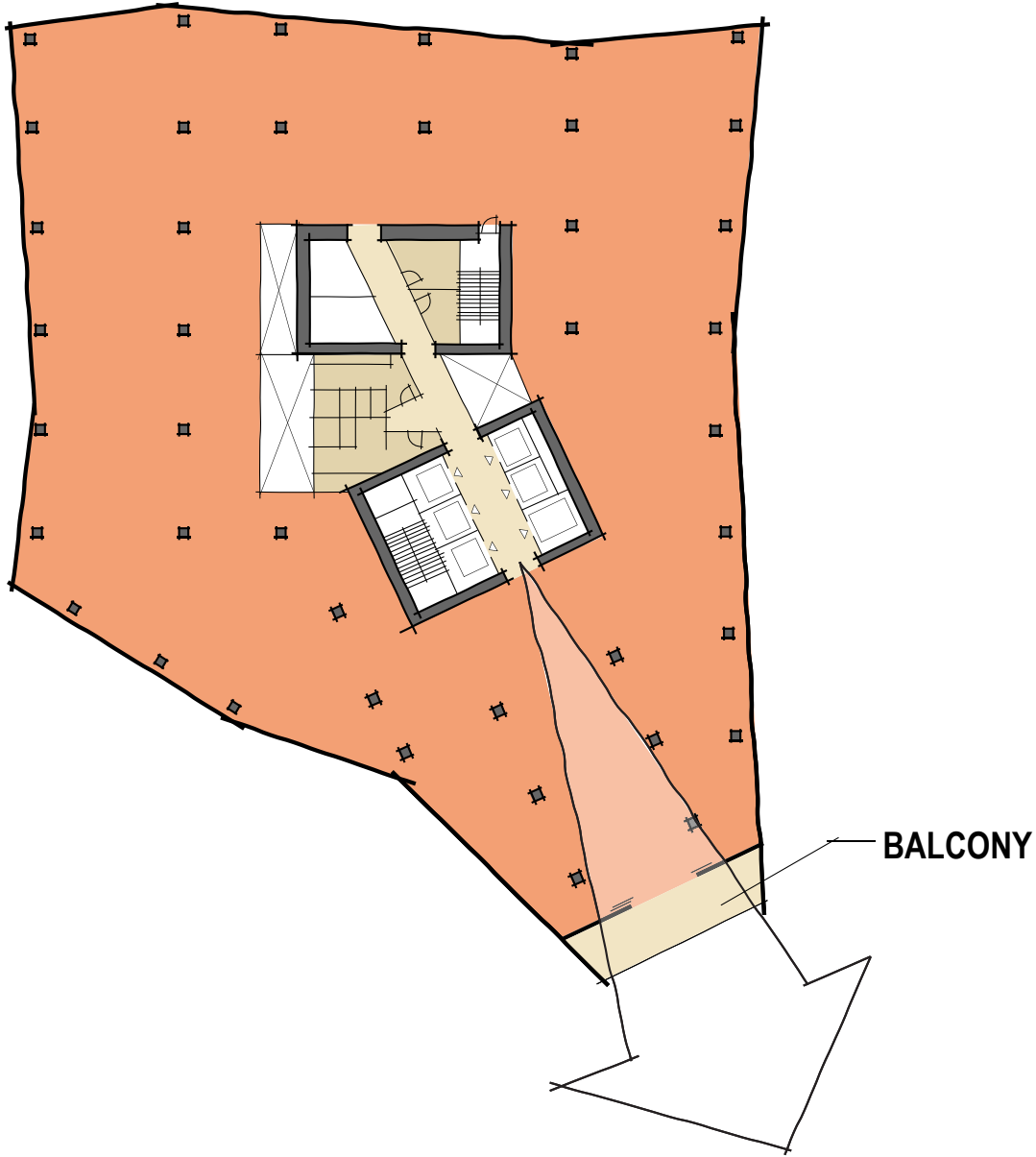


# TOWER FLOOR PLANS



LEVEL 05

MT. TAHOMA



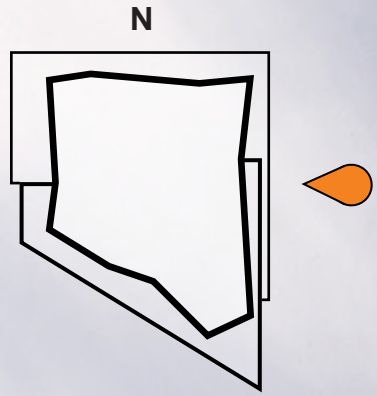
LEVEL 11

MT. TAHOMA

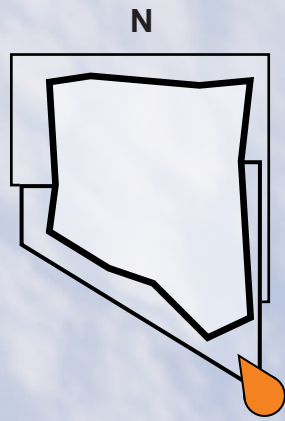
# TAHOMA VIEW ALONG UNIVERSITY



# LOOKING UP\_TOWER



# LOOKING UP\_TAHOMA



# VIEW FROM PACIFIC



# REFINEMENTS

- 1\_ Weaving Concept
- 2\_ Massing
- 3\_ Materiality of Base + Tower



UWAC 08/13/2021



UWAC 10/25/2021



# NEXT STEPS

- 1\_ Board of Regents approval
- 2\_ Define UW Program
- 3\_ Design Development [UWAC Comments Incorporated]
- 4\_ Interior + Exterior Detailing Refinement
- 5\_ Community Engagement Follow Up
- 6\_ Leasing Discussions
- 7\_ Civil Permits
- 8\_ 2nd Meeting with CUCAC

FUTURE  
W26

MID-BLOCK CORRIDOR

80'

UW

90'

LOADING

PARKING

CONF.

DEMO  
LAB

INNOVATION  
HALL

70'

BROOKLYN AVE.

UNIVERSITY WAY

BURKE  
GILLMAN

