

08.30.2016
Landscape Design Development Review
UW Computer Science & Engineering Expansion

The background is a detailed architectural site plan drawing. It features various colored overlays: blue for building footprints and roof areas, brown for paved surfaces, and green for landscaping and trees. The drawing includes structural lines, dimensions, and annotations. A north arrow is visible in the top right corner.

Project Schedule

- > DD approval today
- > 60% CDs mid-September

Schematic Design Follow-up:

- > Paving design
- > Stevens Way crossing
- > Bollard design
- > Design language of Plaza areas
- > Roof design

Design Development Progress:

- > Site Plan Updates
- > Materials and Details
- > Planting Design
- > Site Lighting
- > Roof Design

Project Schedule

- > DD approval today
- > 60% CDs mid-September

Schematic Design Follow-up:

- > Paving design
- > Stevens Way crossing
- > Bollard design
- > Design language of Plaza areas
- > Roof design

Design Development Progress:

- > Site Plan Updates
- > Materials and Details
- > Planting Design
- > Site Lighting
- > Roof Design

SITE PLAN UPDATES

SD/DD SITE PLAN



Benton Lane

PAUL G. ALLEN CENTER FOR COMPUTER SCIENCE & ENGINEERING

MECHANICAL ENGINEERING BUILDING

Mechanical Engineering Entry

Nested Lawn

Woodland Stair

Woodland Stair

Shared Plaza

Computer Science & Engineering Expansion

POWER PLANT

OIL TANK ACCESS HATCHES

JEFFERSON ROAD

MASON ROAD

BURKE-GILMAN TRAIL

FUTURE BRIDGE LOCATION

Stevens Way

Woodland Overlook

Loading

More Hall Entry

MORE HALL

REVISED SITE PLAN



Benton Lane

PAUL G. ALLEN CENTER FOR COMPUTER SCIENCE & ENGINEERING

MECHANICAL ENGINEERING BUILDING

Mechanical Engineering Entry

Nested Lawn

Woodland Stair

POWER PLANT

OIL TANK ACCESS HATCHES

Woodland Stair

Shared Plaza

Computer Science & Engineering Expansion

JEFFERSON ROAD

MASON ROAD

FUTURE BRIDGE LOCATION

Stevens Way

Woodland Overlook

Loading

More Hall Entry

MORE HALL

BURKE-GILMAN TRAIL

REVISED SITE PLAN

spacing between trees increased to align with west side of Stevens Way and allow more transparency

plaza planter and benches strengthen circulation and provide resting and gathering spots

new ramps to allow ADA access through to Jefferson St.

Lower stair realigned to work better with existing Mason Rd. Stair and crosswalk

PAUL G. ALLEN CENTER FOR COMPUTER SCIENCE & ENGINEERING

Mechanical Engineering Building
Mechanical Engineering Entry

Nested Lawn

Woodland Stair

Woodland Stair

Shared Plaza

Computer Science & Engineering Expansion

JEFFERSON ROAD

MASON ROAD

FUTURE BRIDGE LOCATION

Stevens Way

Woodland Overlook

Loading

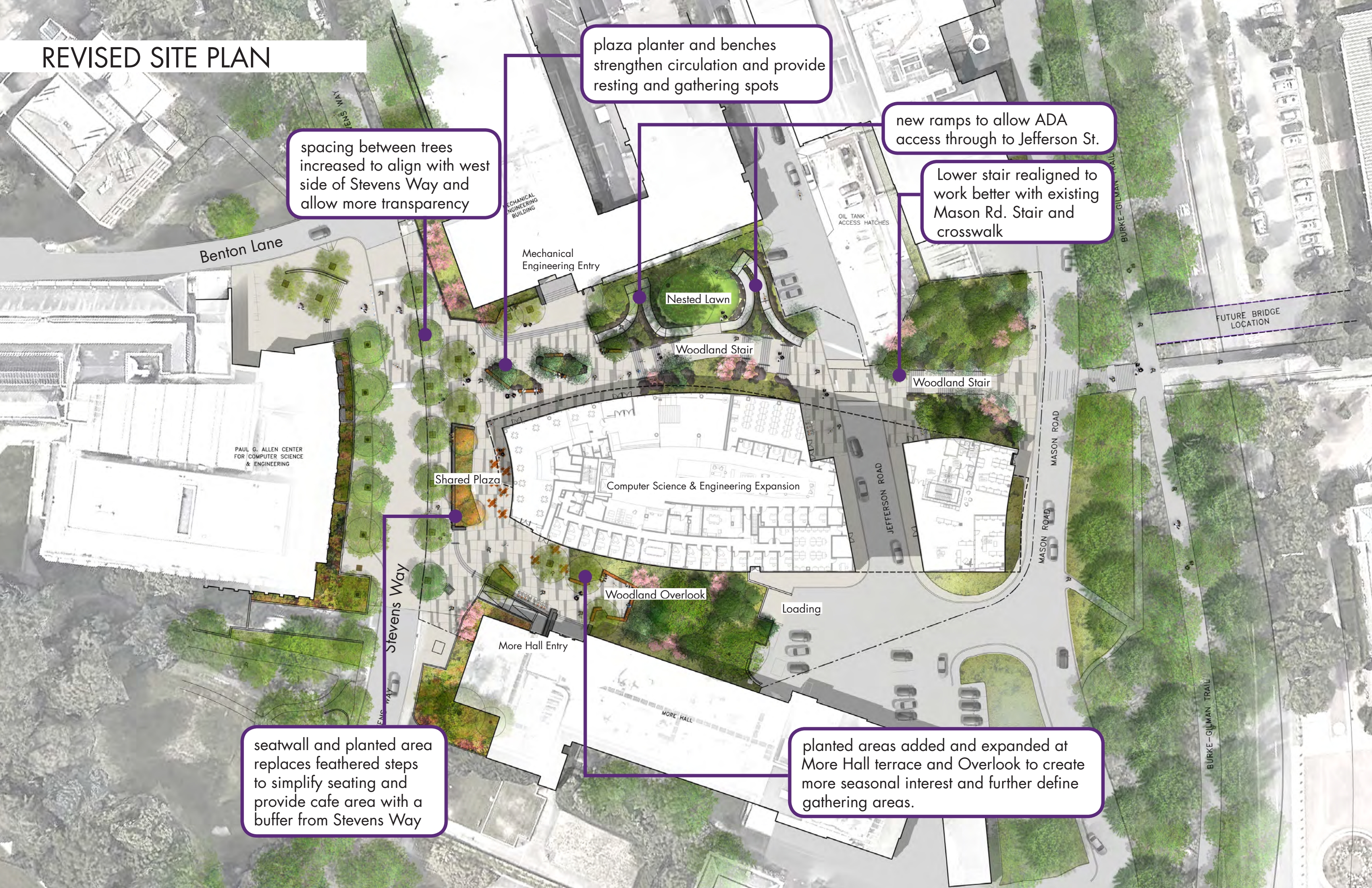
More Hall Entry

MORE HALL

seatwall and planted area replaces feathered steps to simplify seating and provide cafe area with a buffer from Stevens Way

planted areas added and expanded at More Hall terrace and Overlook to create more seasonal interest and further define gathering areas.

BURKE-GILMAN TRAIL



REVISED SITE PLAN



Benton Lane

PAUL G. ALLEN CENTER
FOR COMPUTER SCIENCE
& ENGINEERING

Stevens Way

Shared Plaza

Mechanical Engineering Building

Mechanical Engineering Entry

Nested Lawn

Woodland Stair

Computer Science & Engineering Expansion

Woodland Overlook

More Hall Entry

MORE HALL

Loading

OIL TANK
ACCESS HATCHES

POWER PLANT

JEFFERSON ROAD

Woodland Stair

MASON ROAD

BURKE-GILMAN TRAIL

FUTURE BRIDGE
LOCATION

BURKE-GILMAN TRAIL

STEVENS WAY ELEVATION | CSE EXPANSION



Street tree spacing aligned across Stevens Way

continuous plaza provides shared space and access to engineering buildings

Flowering Trees in plaza planter provide shade to cafe seating but allow views to CSE building



STEVENS WAY ELEVATION | PAUL G ALLEN CENTER



CIRCULATION

MECHANICAL
ENGINEERING

OIL TANK
ACCESS HATCHES

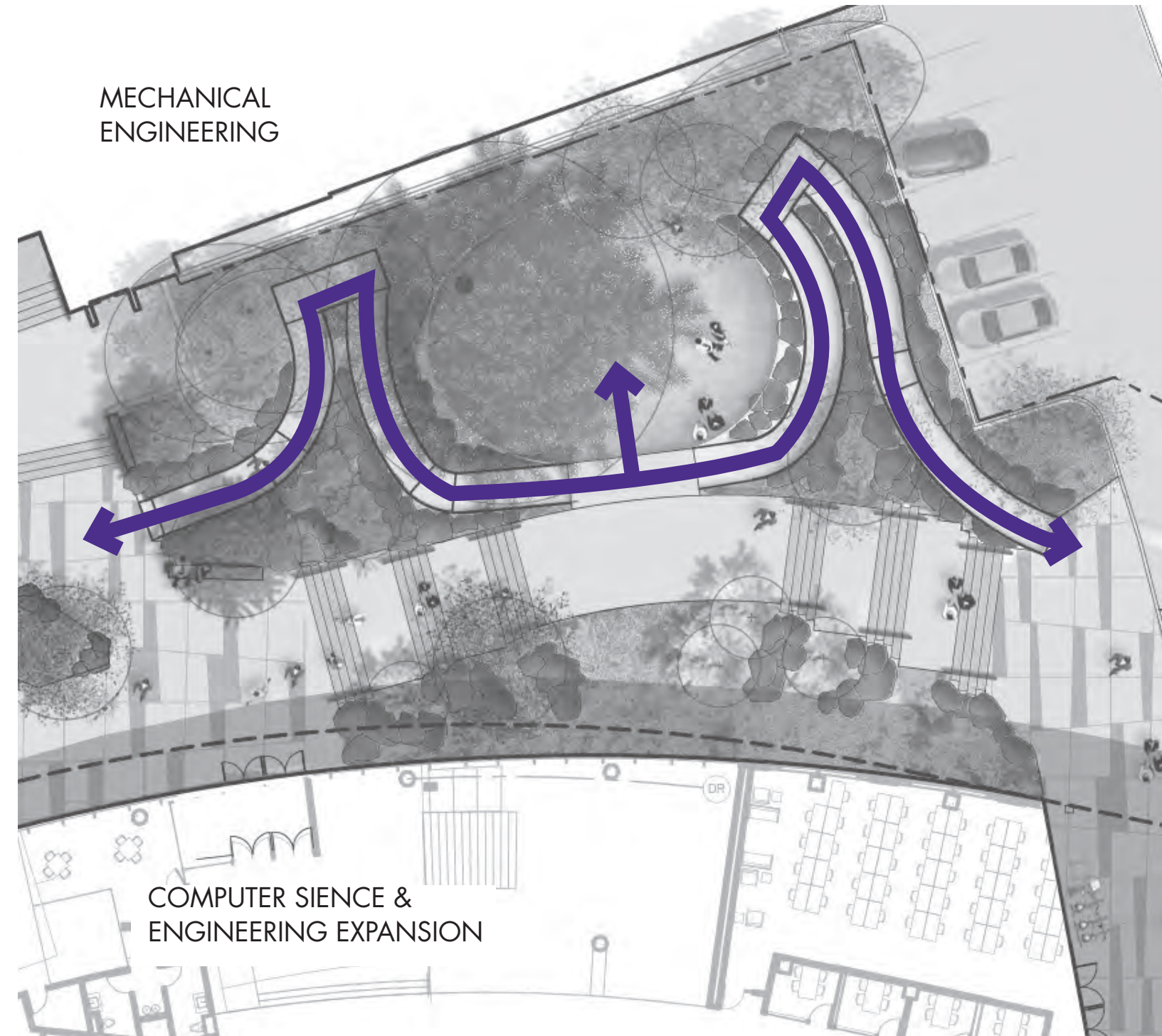
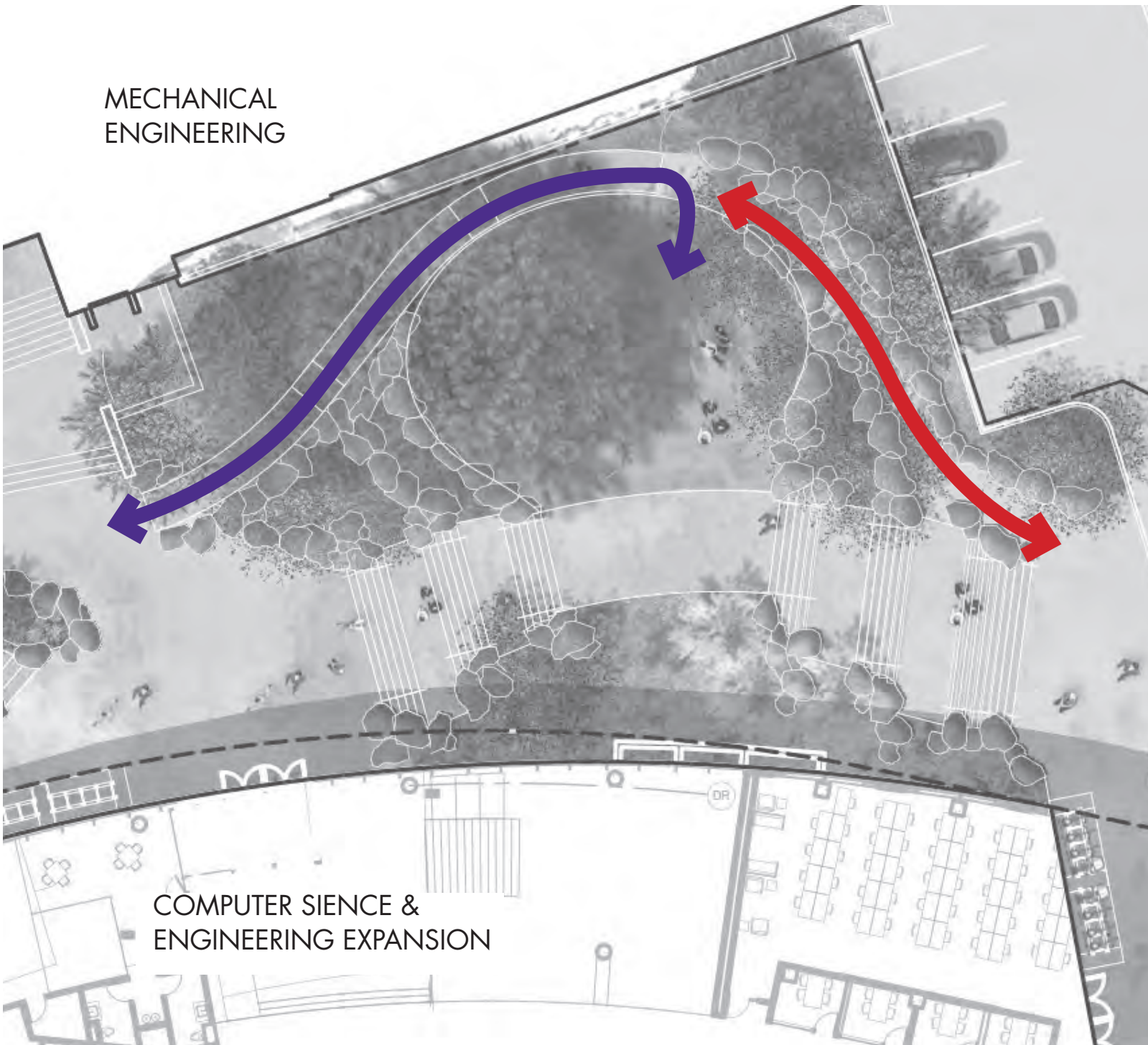
Major Circulation:
Min. 15'-wide path

COMPUTER SCIENCE &
ENGINEERING EXPANSION

MORE HALL
CIVIL ENGINEERING





ACCESSIBILITY

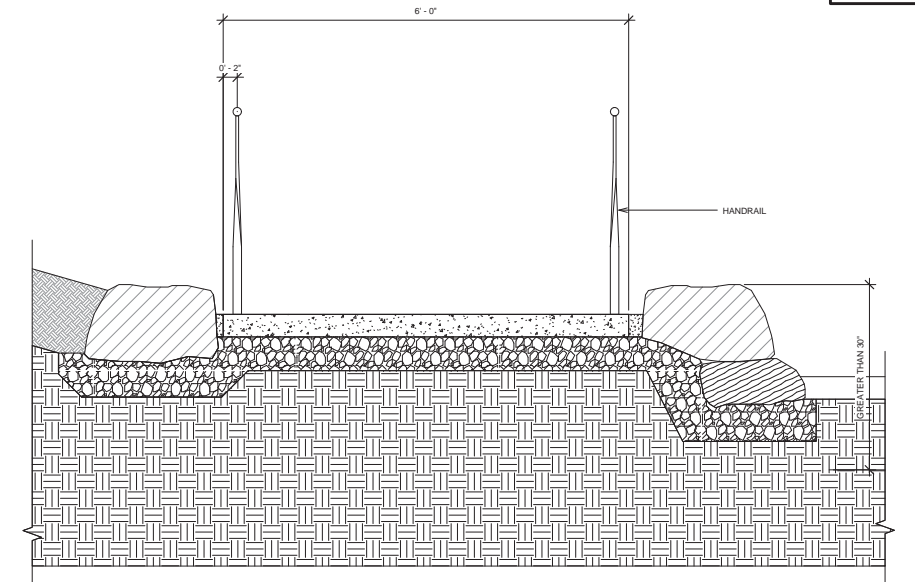
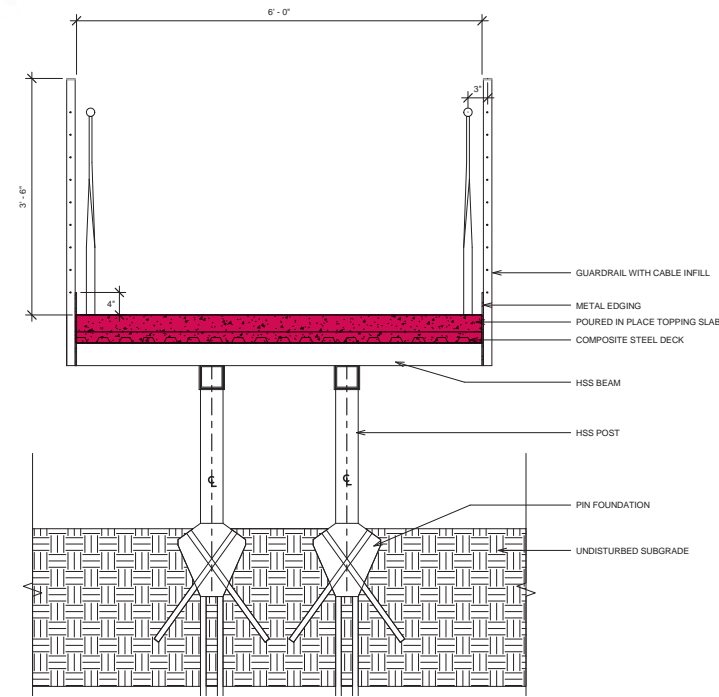
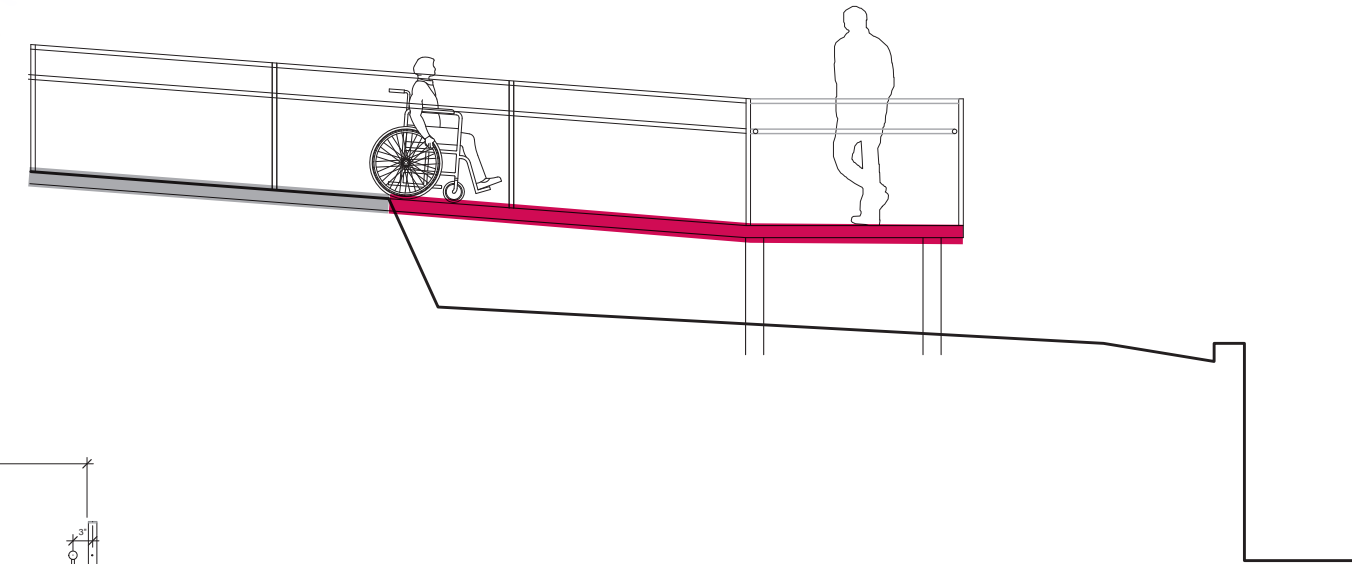
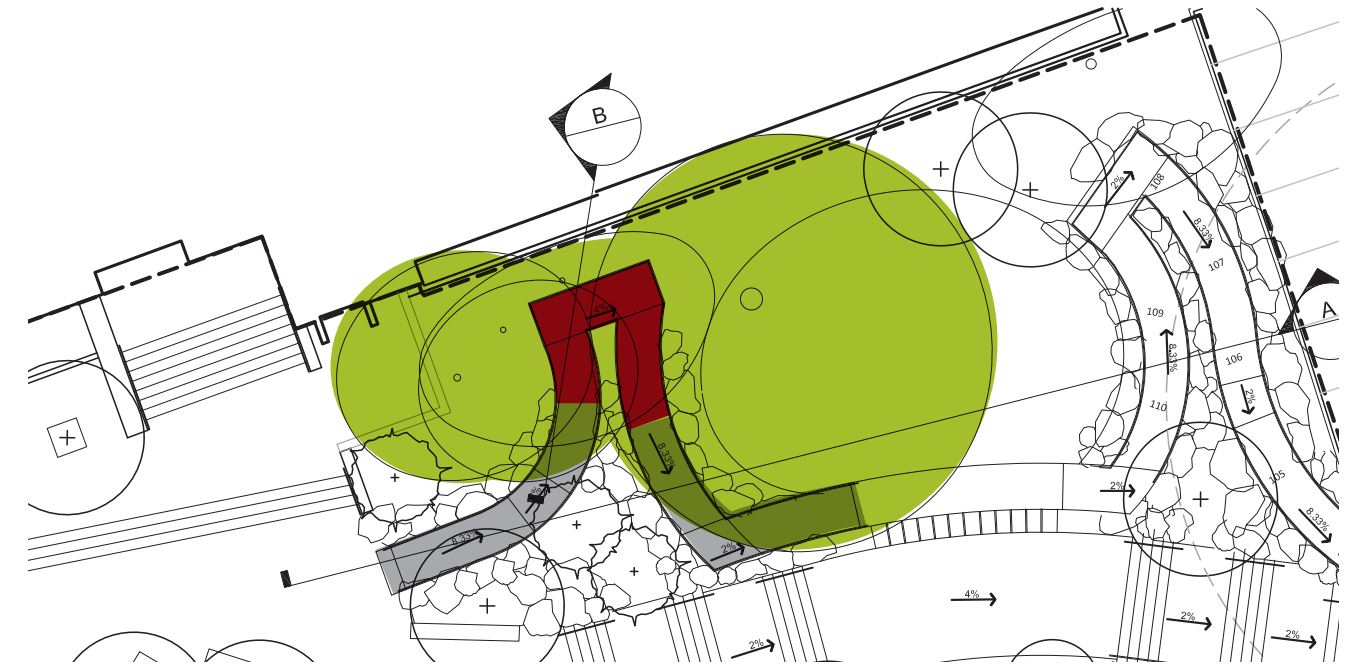
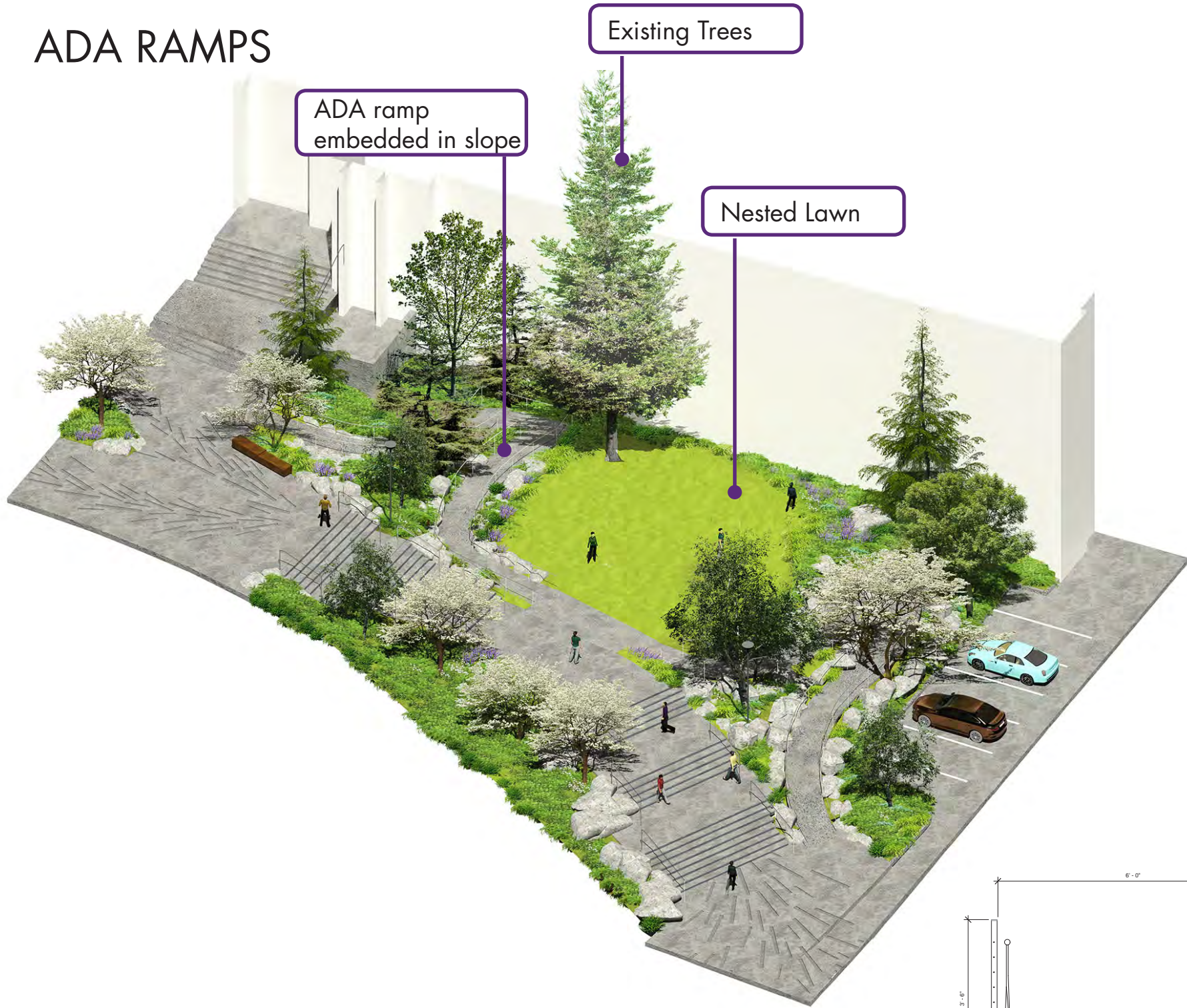


SD Plan Ramps

Revised Ramps

-  < 1:12 slope | wheelchair accessible
-  > 1:12 slope | not wheelchair accessible

ADA RAMPS





BIKE PARKING

30


MECHANICAL
ENGINEERING

OIL TANK
ACCESS HATCHES

POWER PLANT

PAUL G. ALLEN CENTER

COMPUTER SCIENCE &
ENGINEERING EXPANSION

10


20


57


JEFFERSON ROAD

20


MORE HALL
CIVIL ENGINEERING

Requirements:
existing bike spots to be replaced: 56
bike spots req'd by LEED: 81
UW req'd covered exterior spots: 25

Replaced + LEED = 137 (25 of these to be under cover)

Option 1:
40 exterior racks w/o cover
10 exterior racks w/ cover
57 interior secured
30 exterior racks w/ cover - Benton Lane OFF-SITE
137 TOTAL

STANIS WAY

MORE HALL

MASON ROAD

MATERIALS + DETAILS

PAVING PATTERN

MECHANICAL
ENGINEERING

OIL TANK
ACCESS HATCHES

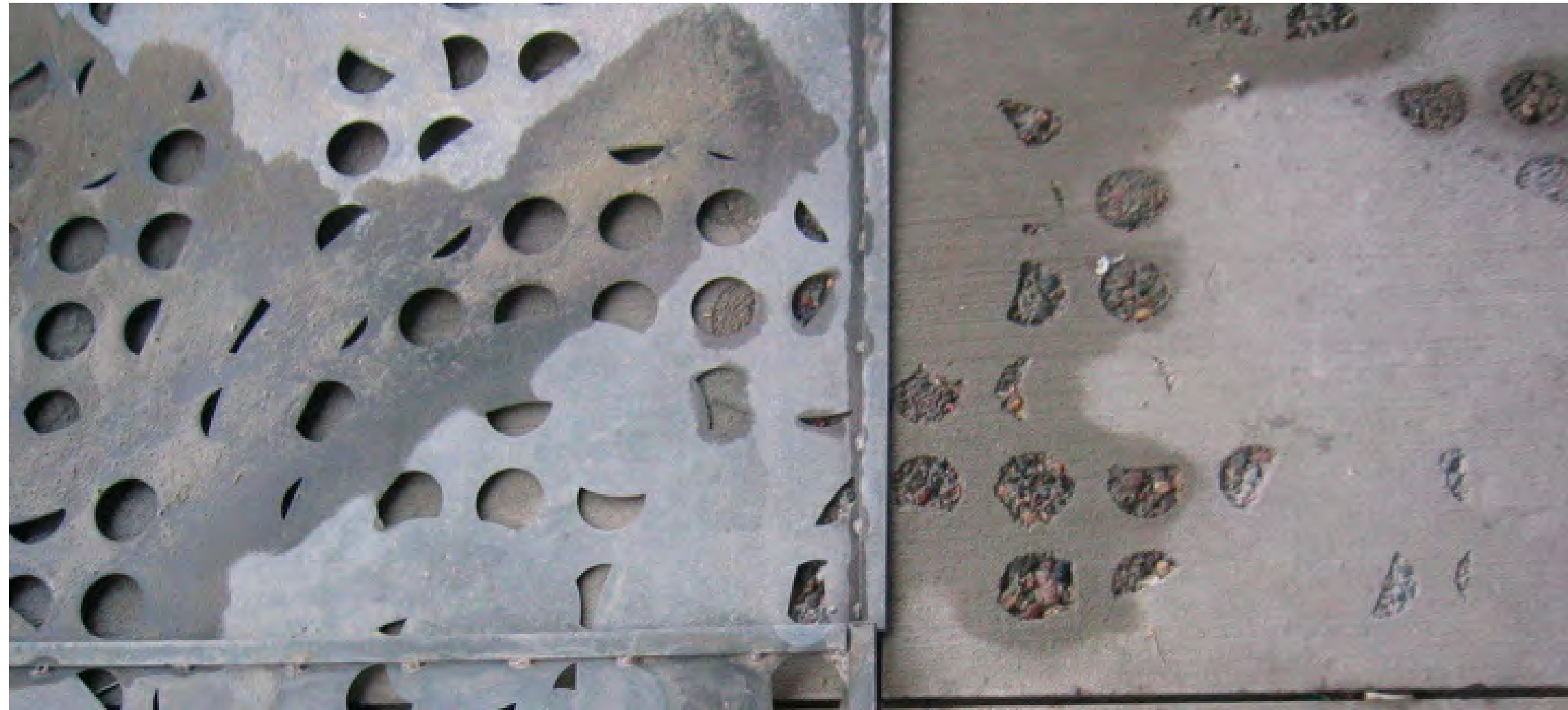
COMPUTER SIENCE &
ENGINEERING EXPANSION

MORE HALL
CIVIL ENGINEERING



CONCRETE PAVING FINISH

- no coloration
- pattern contrast achieved by difference between surface finish and aggregate exposed by sandblast process; aggregate color to be specified
- light broom finish of surface
- sawcut joints
- stencil form from concrete sandblasting can be used to create crosswalks



Light Sandblast

Medium Sandblast

Heavy Sandblast

Exposed Aggregate Sandblast



COMPUTER SCIENCE & ENGINEERING



CROSSWALK SAFETY | STOP BARS

MECHANICAL
ENGINEERING

OIL TANK
ACCESS HATCHES

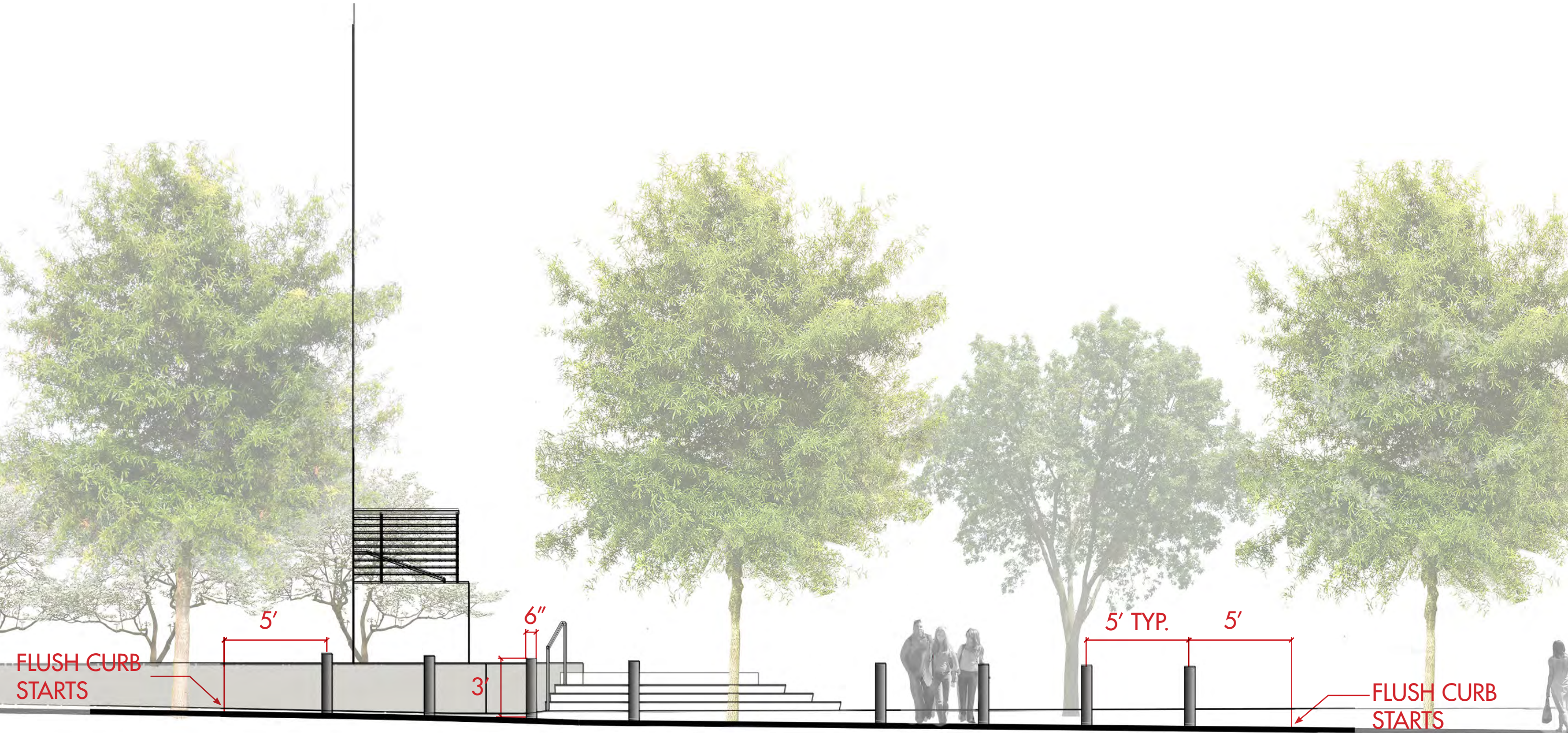
COMPUTER SIENCE &
ENGINEERING EXPANSION

MORE HALL
CIVIL ENGINEERING

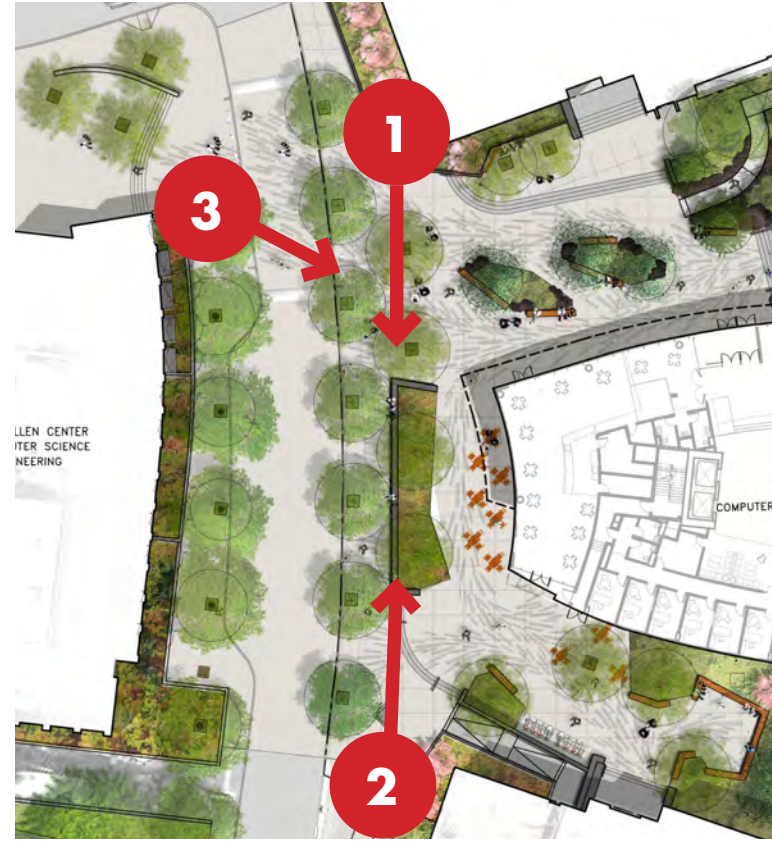




BOLLARDS



BOLLARDS



GUARDRAILS



RAMP GUARDRAILS cable mesh in rigid frame



WALL GUARDRAILS horizontal rods with flat posts

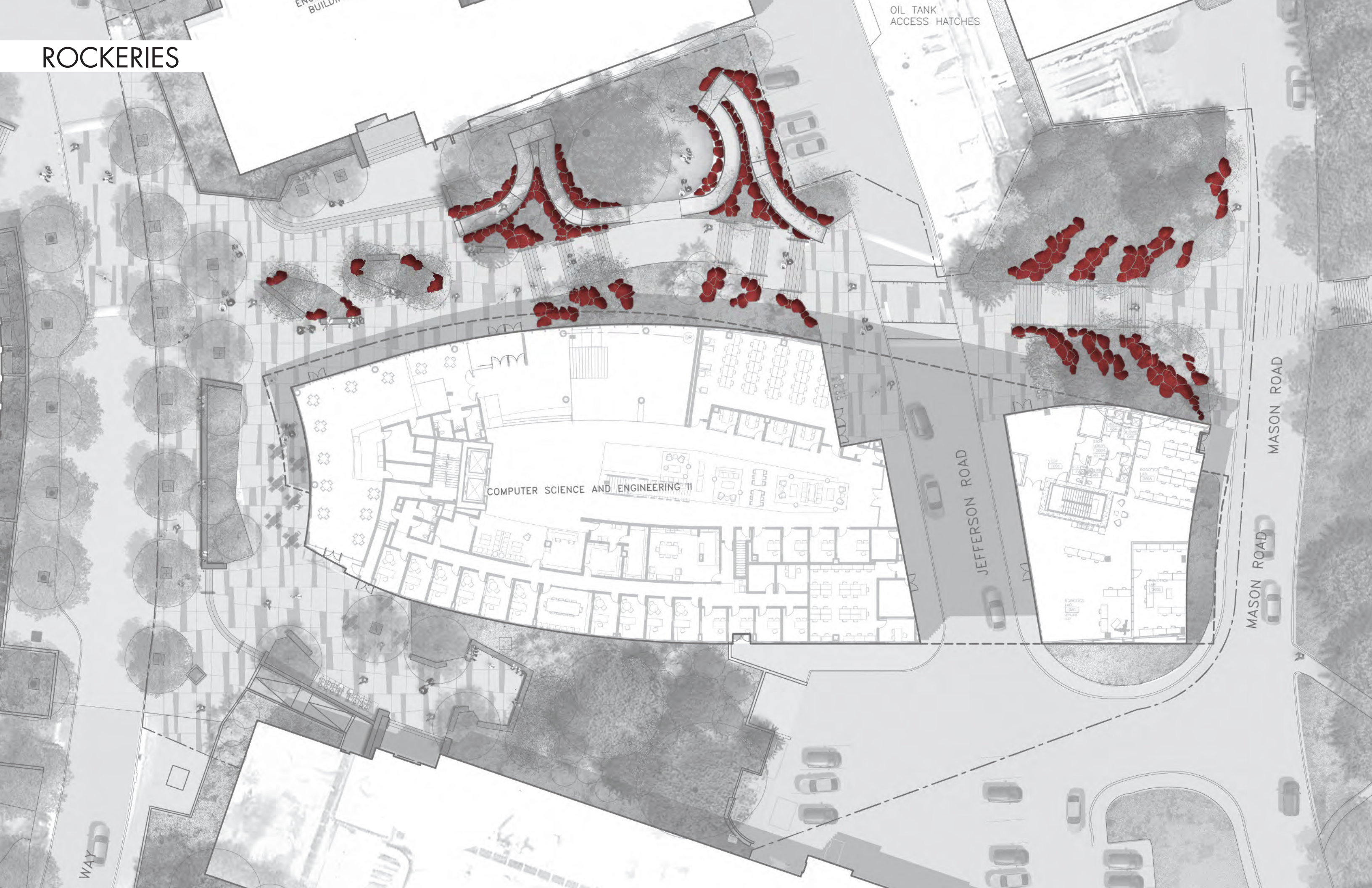


WOOD SALVAGE





ROCKERIES



OIL TANK
ACCESS HATCHES

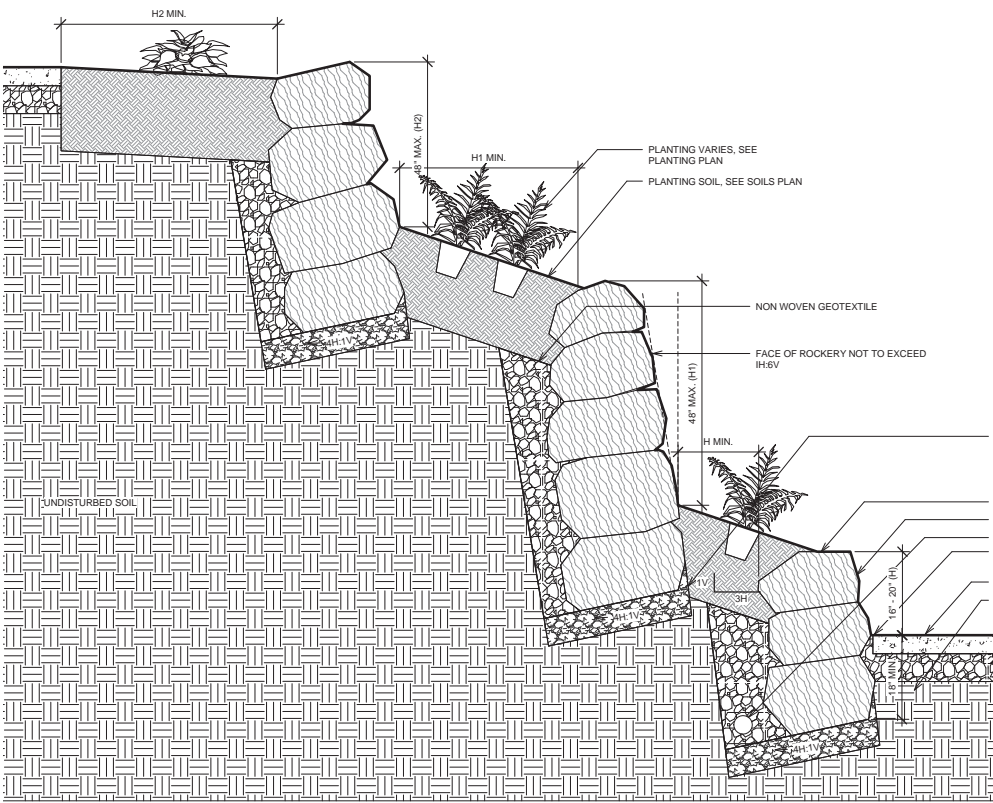
COMPUTER SCIENCE AND ENGINEERING II

JEFFERSON ROAD

MASON ROAD

WAY

ROCKERIES



PLANTING VARIES, SEE PLANTING PLAN

PLANTING SOIL, SEE SOILS PLAN

NON WOVEN GEOTEXTILE

FACE OF ROCKERY NOT TO EXCEED 1/8" V

6" CRUSHED ROCK, SEE GEOTECH LETTER

GRADING VARIES, SEE CIVIL DRAWINGS

ROCKERY

SEE CIVIL FOR DRAINAGE AND BACKFILL

COLD JOINT

FUTURE WALKWAY

COMPACTED SUBGRADE

ROCKERIES | High Cascade Granite

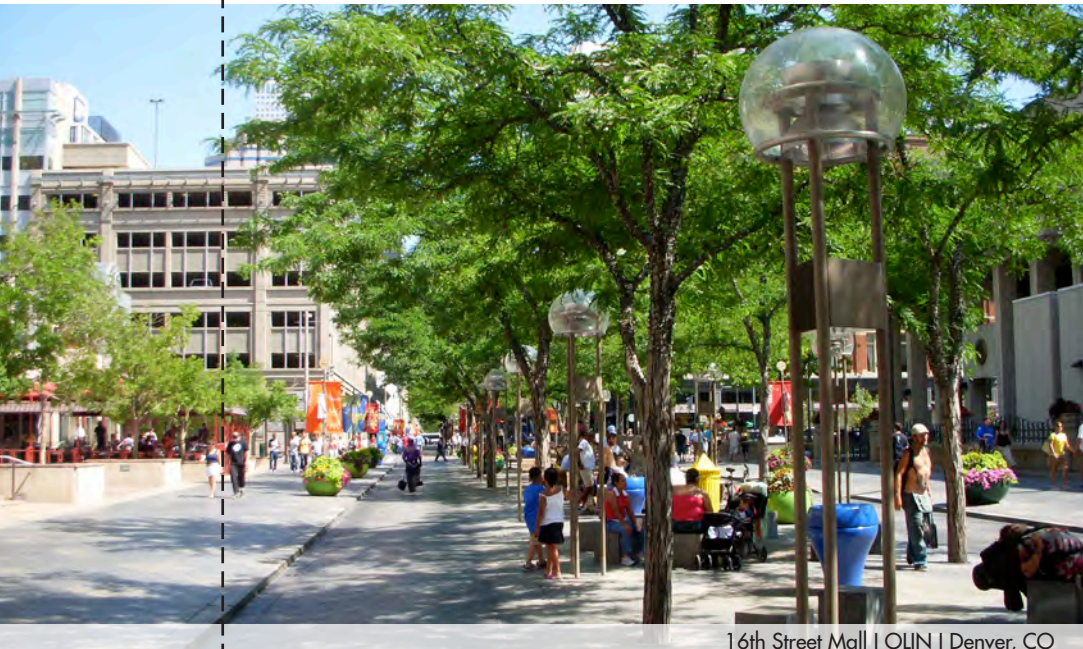


ROCKERIES | Basalt

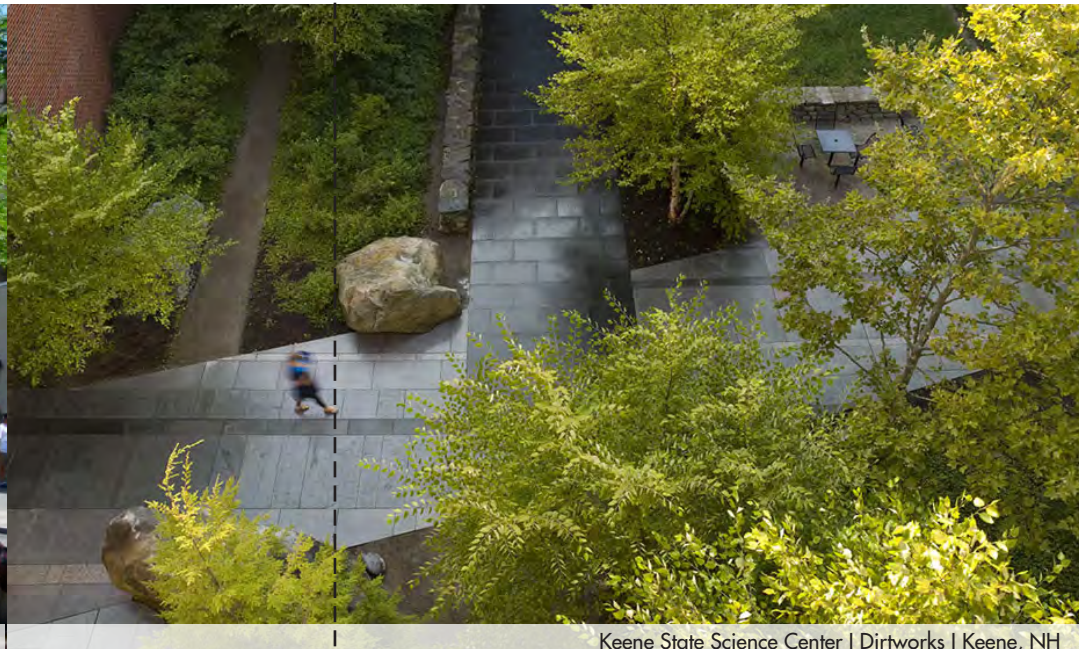


PLANTING DESIGN

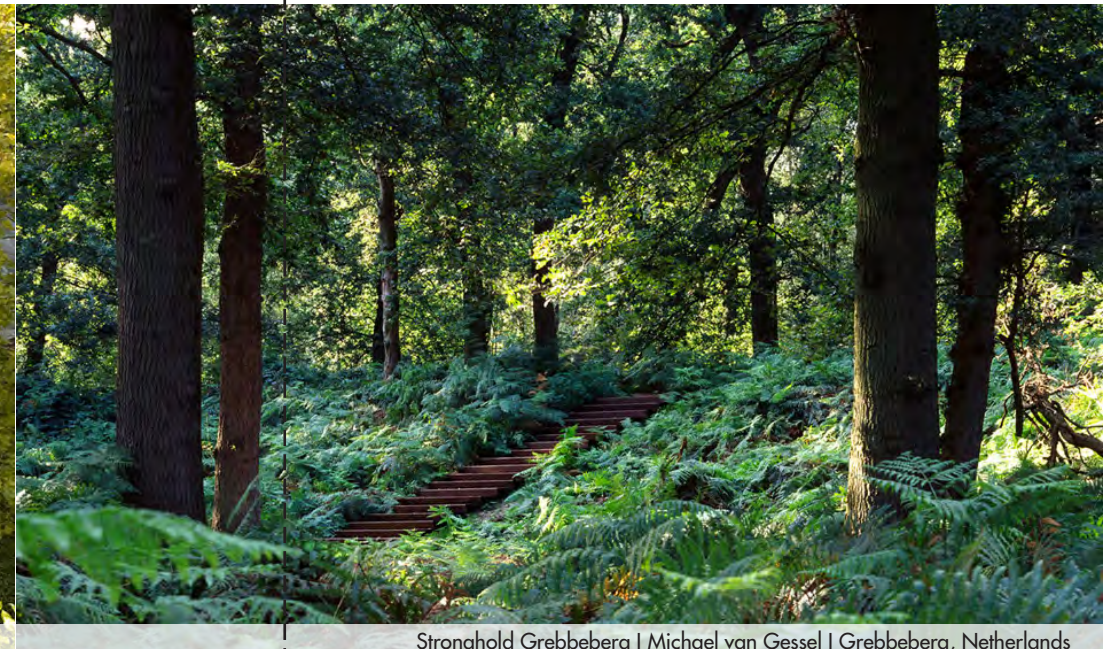
TRANSECT



16th Street Mall | OLIN | Denver, CO



Keene State Science Center | Dirtworks | Keene, NH



Stronghold Grebbeberg | Michael van Gessel | Grebbeberg, Netherlands



Paul G. Allen Center

Stevens Way

Shared Plaza

Woodland Stair + Nested Lawn

Jefferson St.

Mason Rd.

Burke-Gilman Trail

Lake Washington Connection

PLANT TYPES



PLAZA CANOPY

Willow Oak - *Quercus phellos*
Lacebark Elm - *Ulmus parvifolia*

Star Magnolia - *Magnolia stellata*
Kousa Dogwood - *Cornus kousa*



REMNANT WOODLAND PLANTERS

Paper Birch - *Betula papyrifera*
Lacebark Elm - *Ulmus parvifolia*

Kousa Dogwood - *Cornus kousa*
Eddie's White Wonder - *Cornus 'Eddies White Wonder'*
Saskatoon Serviceberry - *Amelanchier alnifolia*

Swordleaf Rush - *Juncus ensifolius*
Slough Sedge - *Carex obnupta*
Sawbeak Sedge - *Carex stipata*
Chamisso Sedge - *Carex Pachystachya*
Small-fruited Bullrush - *Scirpus microcarpus*
Soft Stem Bullrush - *Schoenoplectus tabernaemontani*

Sword Fern - *Polystichum munitum*
Lady Fern - *Athyrium filix-femina*
Deer Fern - *Blechnum spicant*
Oak Fern - *Gymnocarpium dryopteris*
Wood Sorrel - *Oxalis oregana*



WOODLAND SLOPE

Bigleaf Maple - *Acer macrophyllum*
Douglas fir - *Pseudotsuga menziesii*
Western Red Cedar - *Thuja plicata*
Alaska Cypress - *Chamaecyparis nootkatensis*
Whitebark Pine - *Pinus albicaulis* Kousa

Kousa Dogwood - *Cornus kousa*
Eddie's White Wonder - *Cornus 'Eddies White Wonder'*
Saskatoon Serviceberry - *Amelanchier alnifolia*

Hairy Manzanita - *Arctostaphylos columbiana*
Oceanspray - *Holodiscus discolor*
Oregon viburnum - *Viburnum edele*
Snowberry - *Symphoricarpus albus*
Mock-Orange - *Philadelphus lewisii*
Pacific Rhododendron - *Rhododendron macrophyllum*
Red Currant - *Ribes sanguineum*

Sword Fern - *Polystichum munitum*
Lady Fern - *Athyrium filix-femina*
Deer Fern - *Blechnum spicant*
Oak Fern - *Gymnocarpium dryopteris*
Wood Sorrel - *Oxalis oregana*

Bleeding Heart - *Lamprocapnos spectabilis*
False Solomon's Seal - *Maianthemum racemosum*
Fringecup - *Tellima grandiflora*
False Lily-of-the-Valley - *Maianthemum dilatatum*

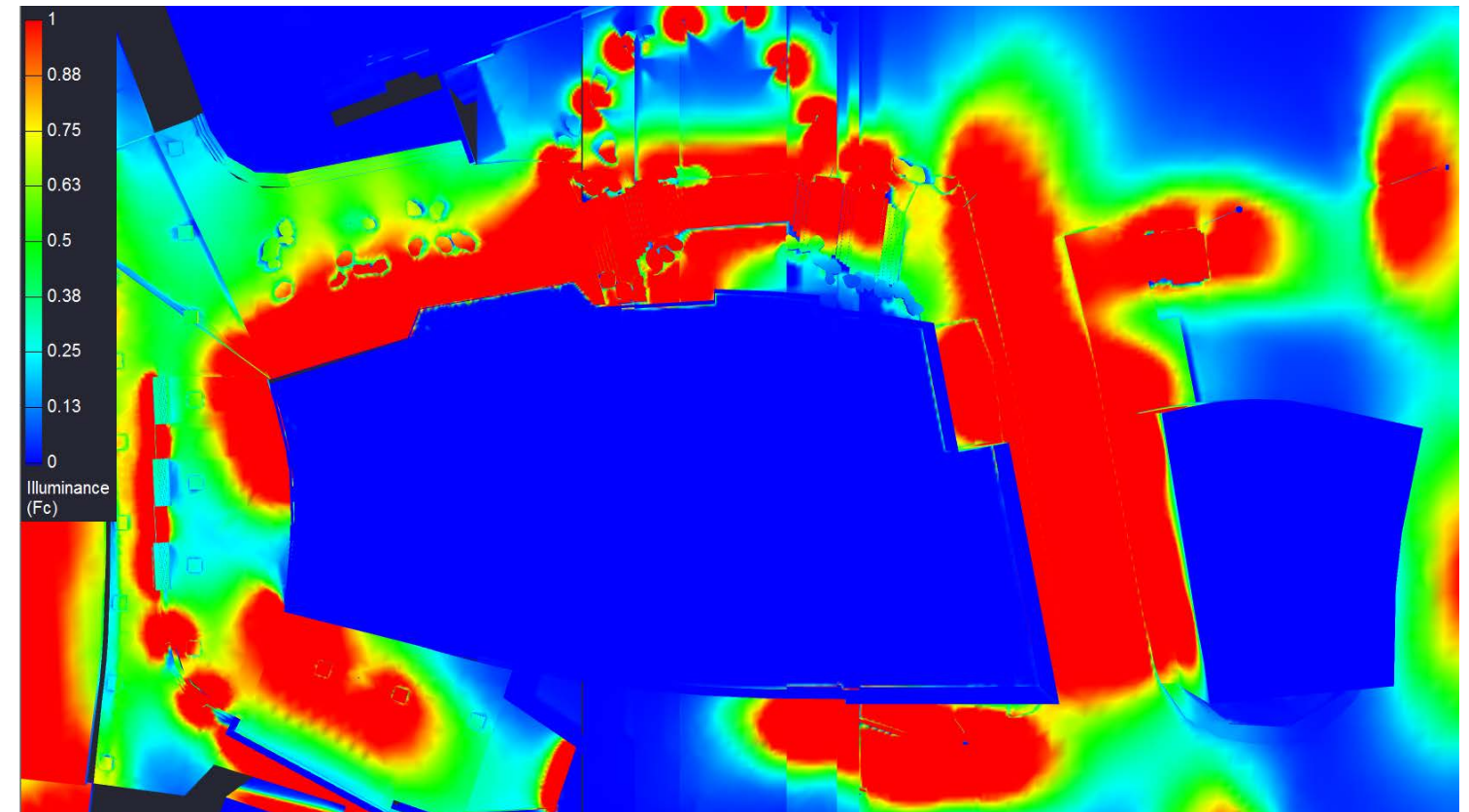
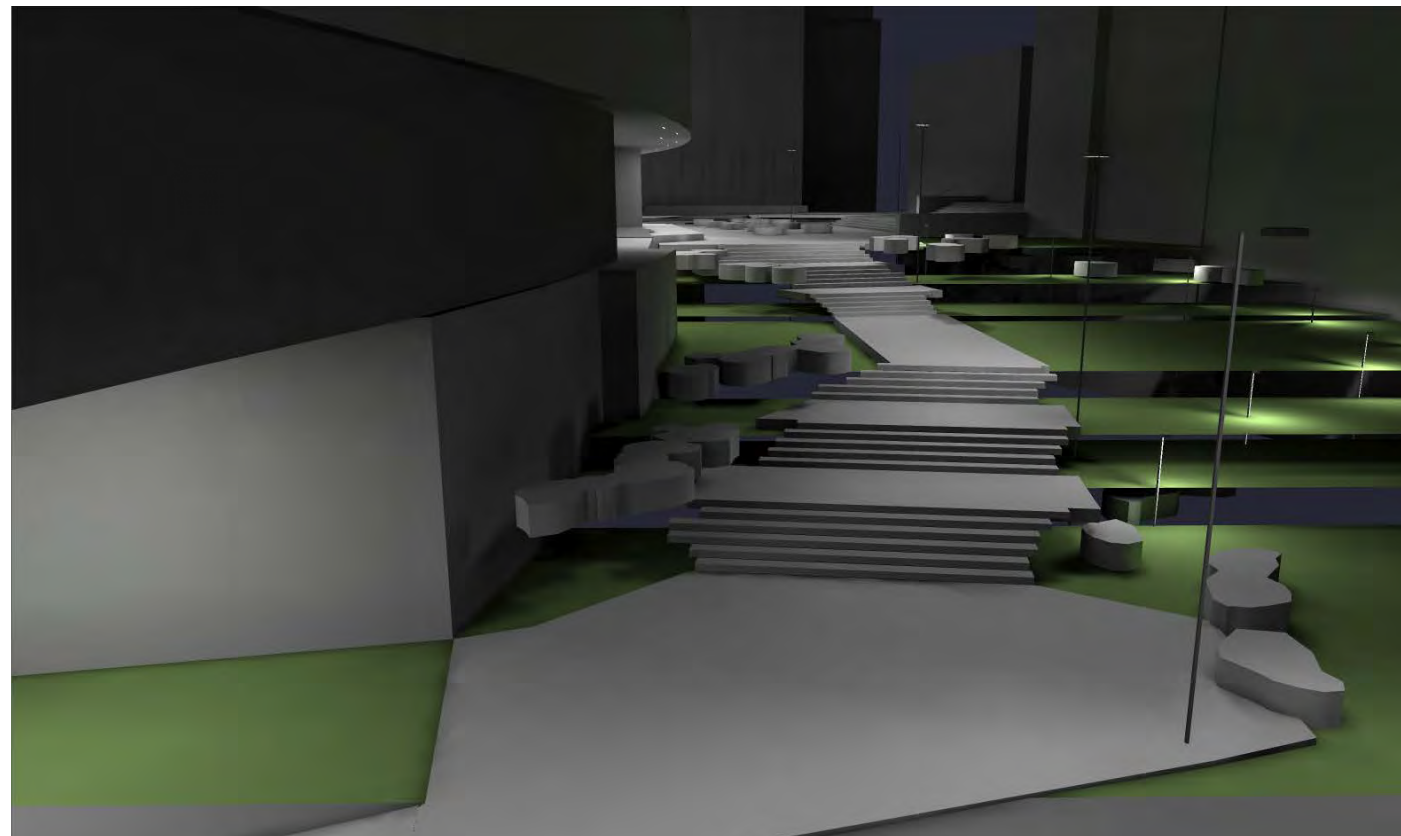


SITE LIGHTING

SITE LIGHTING



campus standard Lumec

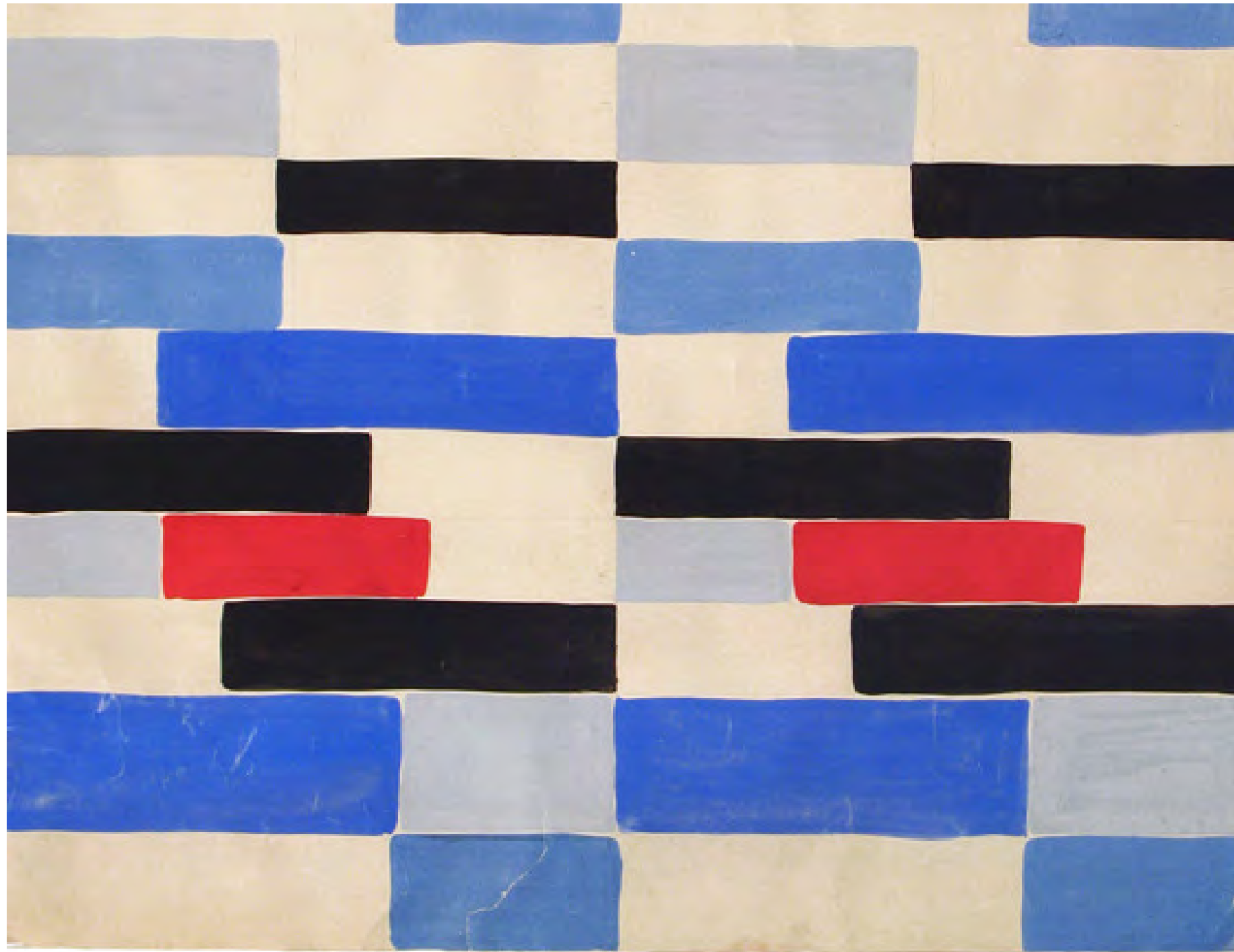
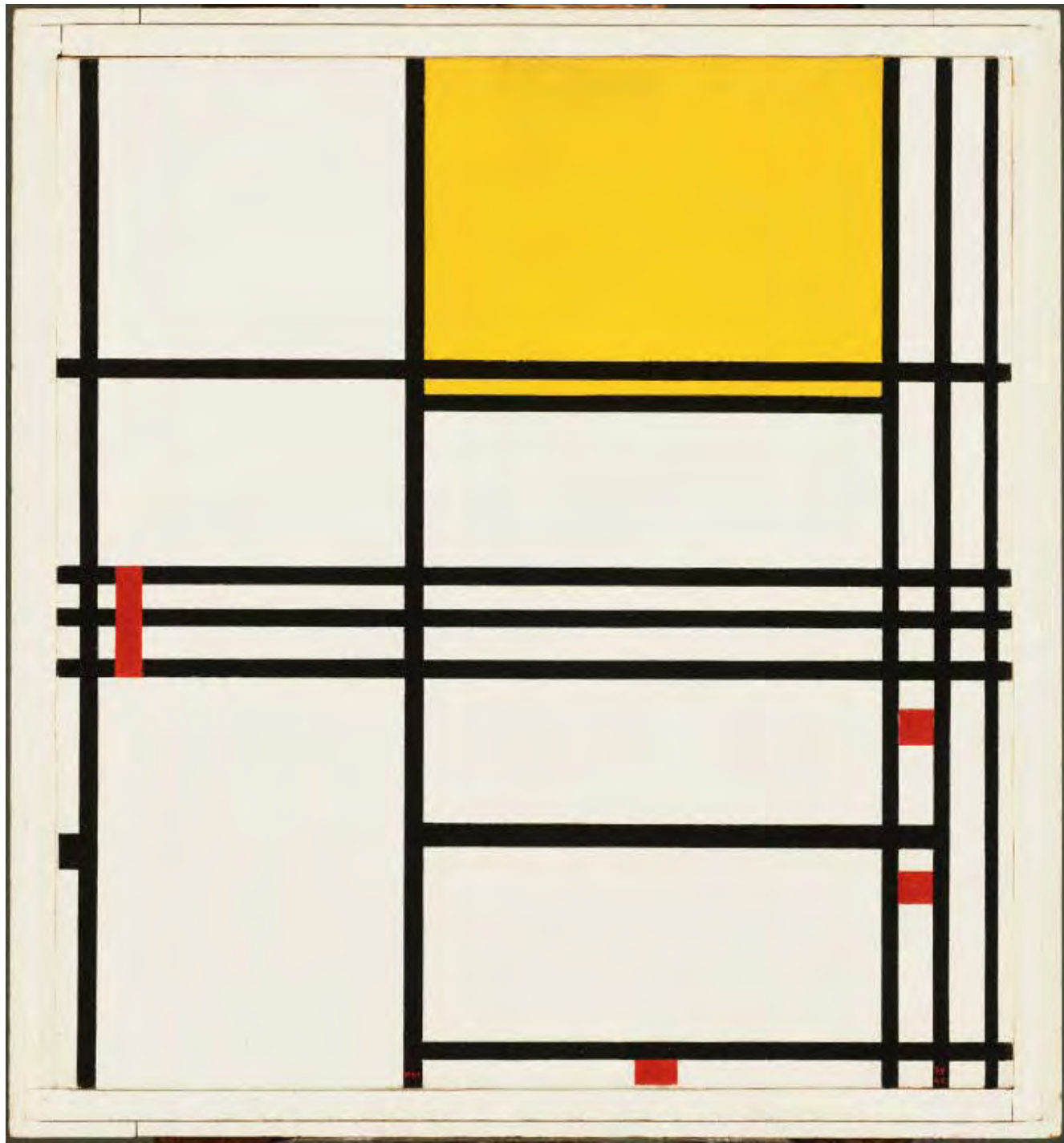


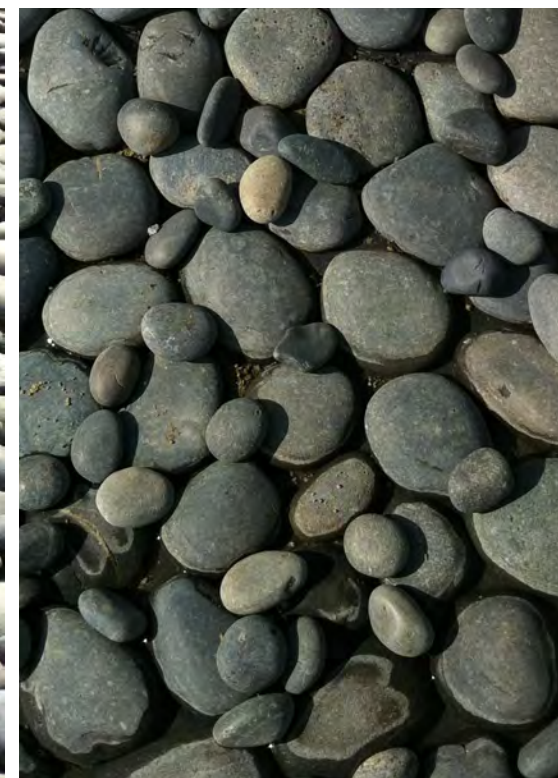
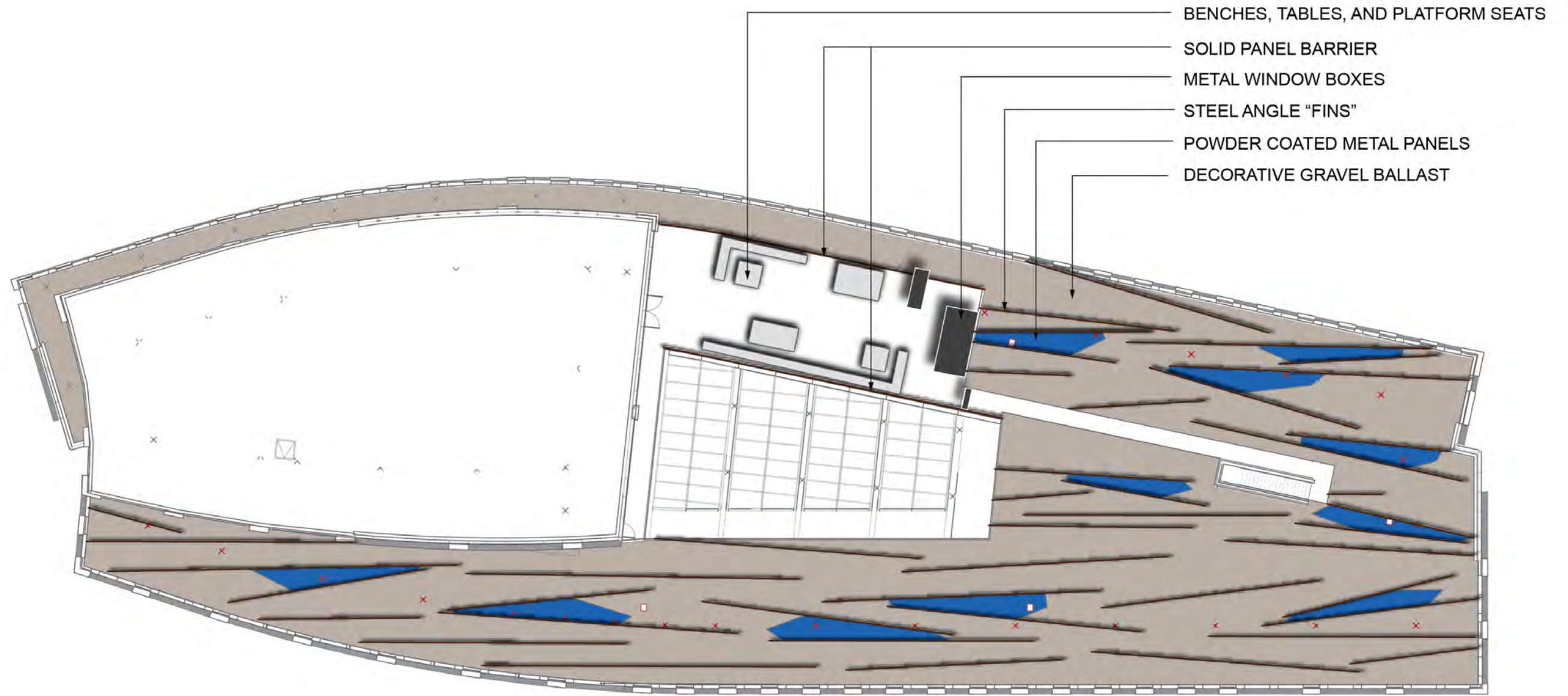
SITE LIGHTING PALETTE

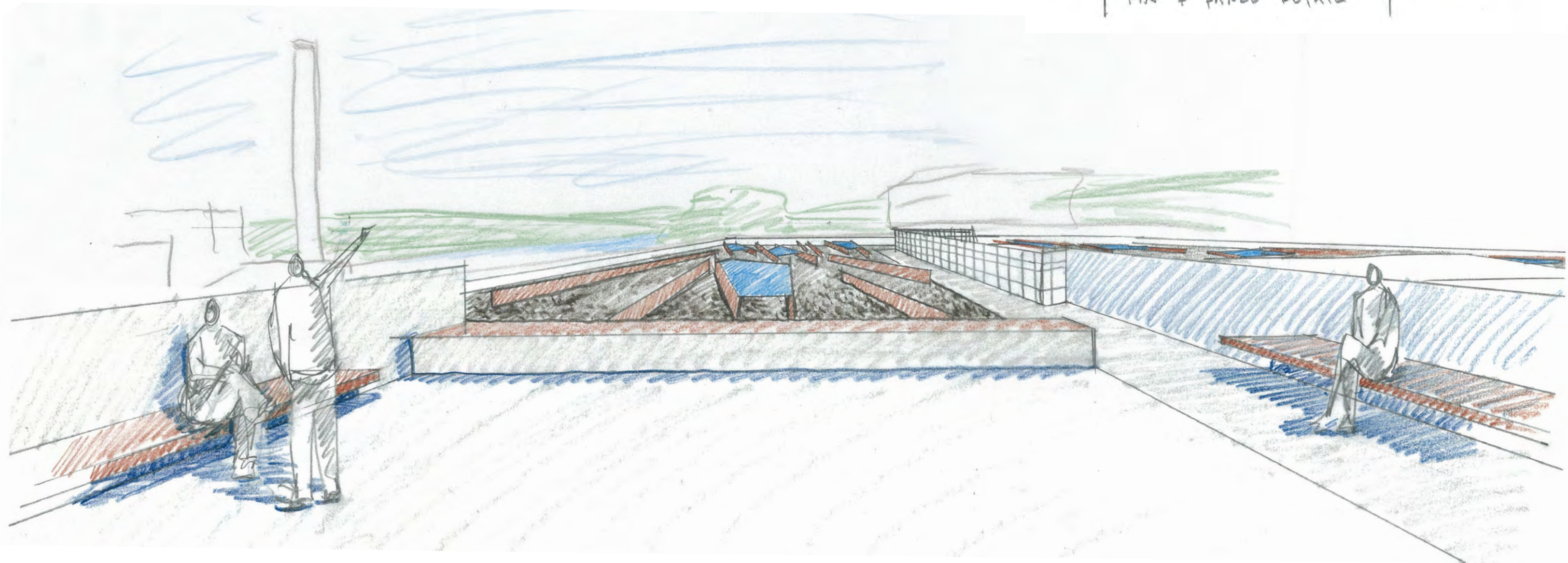
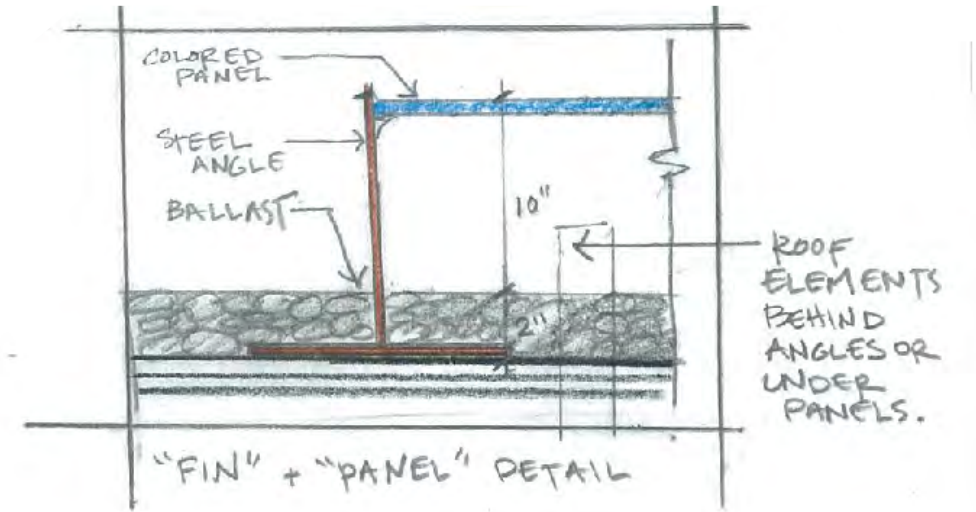


ROOF DESIGN











STEVENS WAY

MECHANICAL ENGINEERING BUILDING

POWER PLANT

OIL TANK ACCESS HATCHES

PAUL G. ALLEN CENTER FOR COMPUTER SCIENCE & ENGINEERING

COMPUTER SCIENCE AND ENGINEERING II

JEFFERSON ROAD

MASON ROAD

MASON ROAD

MORE HALL

BURKE-GILMAN TRAIL

BURKE-GILMAN TRAIL

FUTURE BRIDGE LOCATION