

# CAMPUS MASTER PLAN 2017

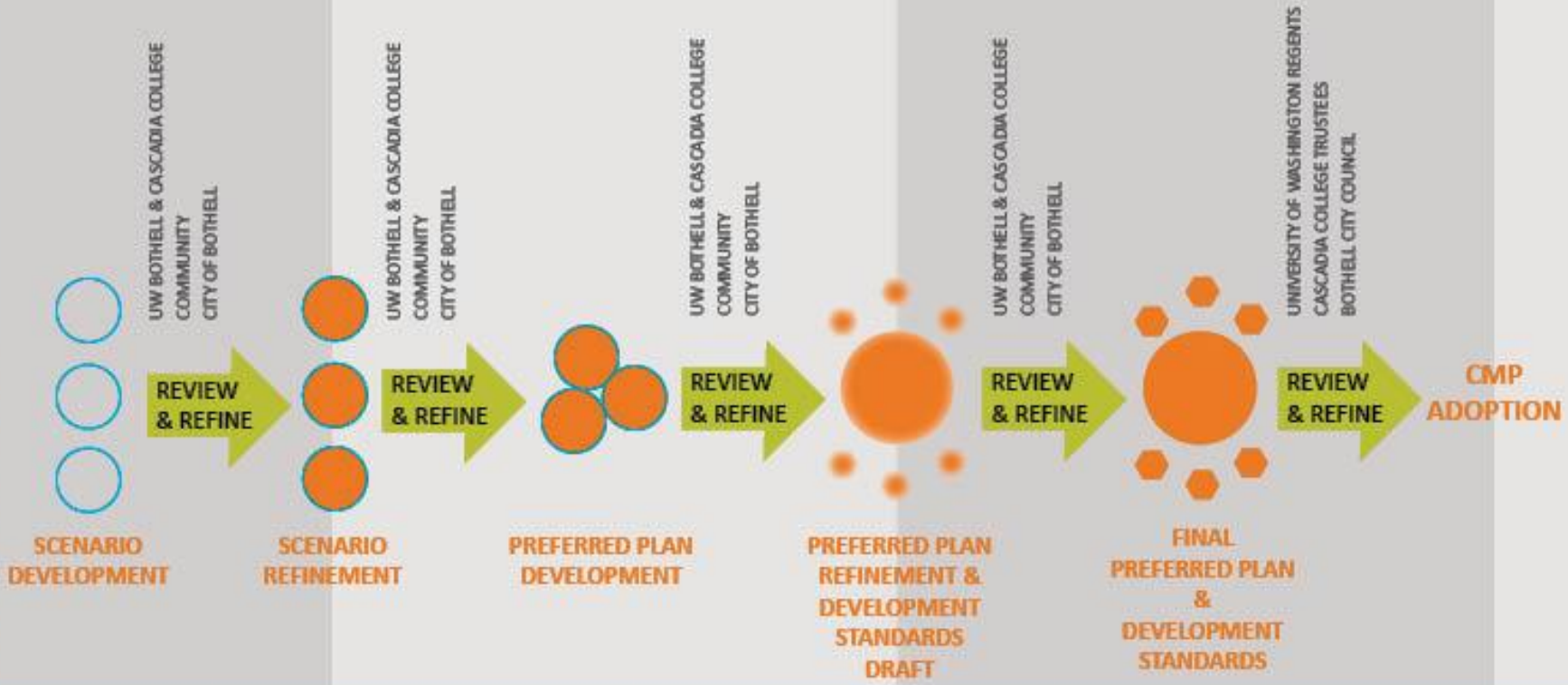
UNIVERSITY OF WASHINGTON BOTHELL & CASCADIA COLLEGE



# WHY A NEW CAMPUS MASTER PLAN AND DEVELOPMENT PROCESS?

- Ensure future campus growth and development complements community development and takes community concerns into consideration through a transparent process.
- Establish new planning and review process: UW Bothell and Cascadia College (campus) identify needs for the next 20 years; community, city, and campus review proposed projects and their cumulative impacts in comprehensive public process. As projects are initiated, community and city review will be guided by design standards outlined in the Campus Master Plan.
- Respond to community concerns UW Bothell heard when proposing a residence hall with a food service facility as a stand-alone project.
- Provide reasonable certainty to both the community and the campus regarding development future development and how the impacts of that development will be mitigated.
- Need for shared, comprehensive understanding of campus and community growth, needs, and resources for future development.
- Desire to maximize and leverage shared resources the co-located campus offers both institutions.

**UW BOTHELL + CASCADIA COLLEGE  
CAMPUS MASTER PLAN**



FALL

WINTER

SPRING

S

**ENVIRONMENTAL  
IMPACT STATEMENT**



9-15-16 Presentation to Our Neighbors



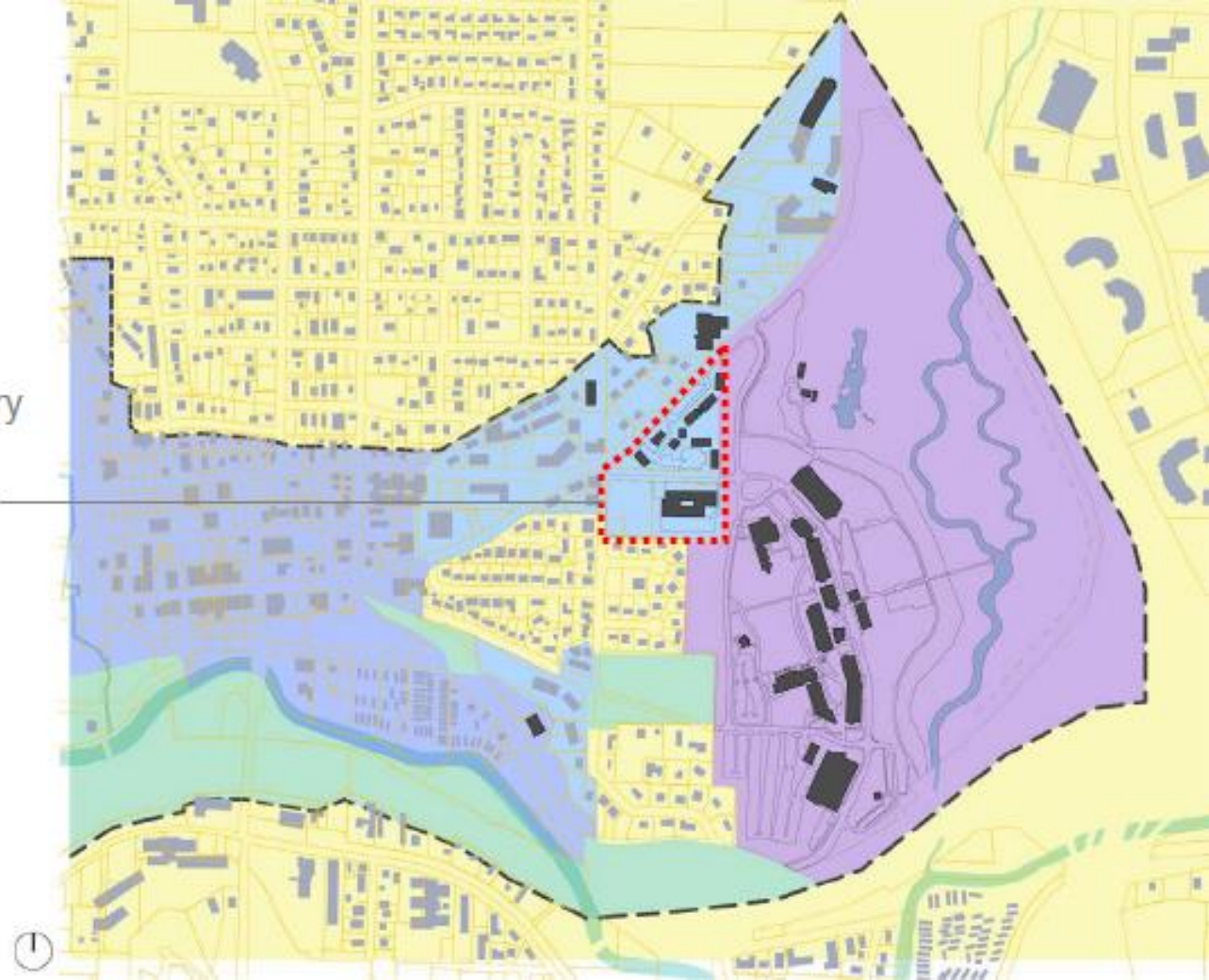
# CAMPUS MASTER PLAN 2016/17 PROCESS

<b>STEP 1</b>	<b>City of Bothell</b> Adopt enabling legislation that establishes a process for city approval of the campus master plan and development agreement	September to December 2016
<b>STEP 2</b>	<b>City of Bothell</b> Adopt a comprehensive plan amendment to expand the campus district boundary to include four (4) parcels owned or leased by UW Bothell ( <i>Husky Village, Husky Hall and two properties referred to as Marvin property</i> )	September to December 2016
<b>STEP 3</b>	<b>Campus - Campus Master Planning</b> <ul style="list-style-type: none"><li>• Collect, review and analyze existing conditions and capacity</li><li>• Develop vision, growth profile and planning parameters</li><li>• Develop preferred option</li><li>• Environmental Impact Statement scoping</li><li>• Finalize master plan</li><li>• Continuous community engagement for each detail</li></ul>	Fall 2016 to Summer 2017
<b>STEP 4</b>	<b>City of Bothell</b> Council consider adoption of Campus Master Plan and Development Agreement	Summer 2017
	<b>Campus</b> Future construction on campus will not move forward until Campus Master Plan is complete and Development Agreement is approved by City of Bothell	Summer 2017 and beyond



# CITY MAP

proposed boundary  
revision per comp  
plan amendment



# State Environmental Policy Act (SEPA) Environmental Impact Statement Elements (EIS)

## Anticipated Elements of the Environment to be Studied

- Aesthetics/Light & Glare
- Construction
- Earth (soils)
- Energy
- Historic and Cultural Resources
- Housing
- Land Use (including relationship to plans and policies)
- Plants & Animals (including wetlands)
- Public Services (police, fire)
- Transportation
- Utilities

# PLANNING FOCUS AREAS



Parking,  
Transportation,  
and Mobility



Campus Growth  
and Capacity



Housing and  
Dining



Student Life



Landscape,  
Hydrology,  
and Ecology



Town-Gown  
Relationship



Infrastructure:  
Physical Plant  
and Utilities

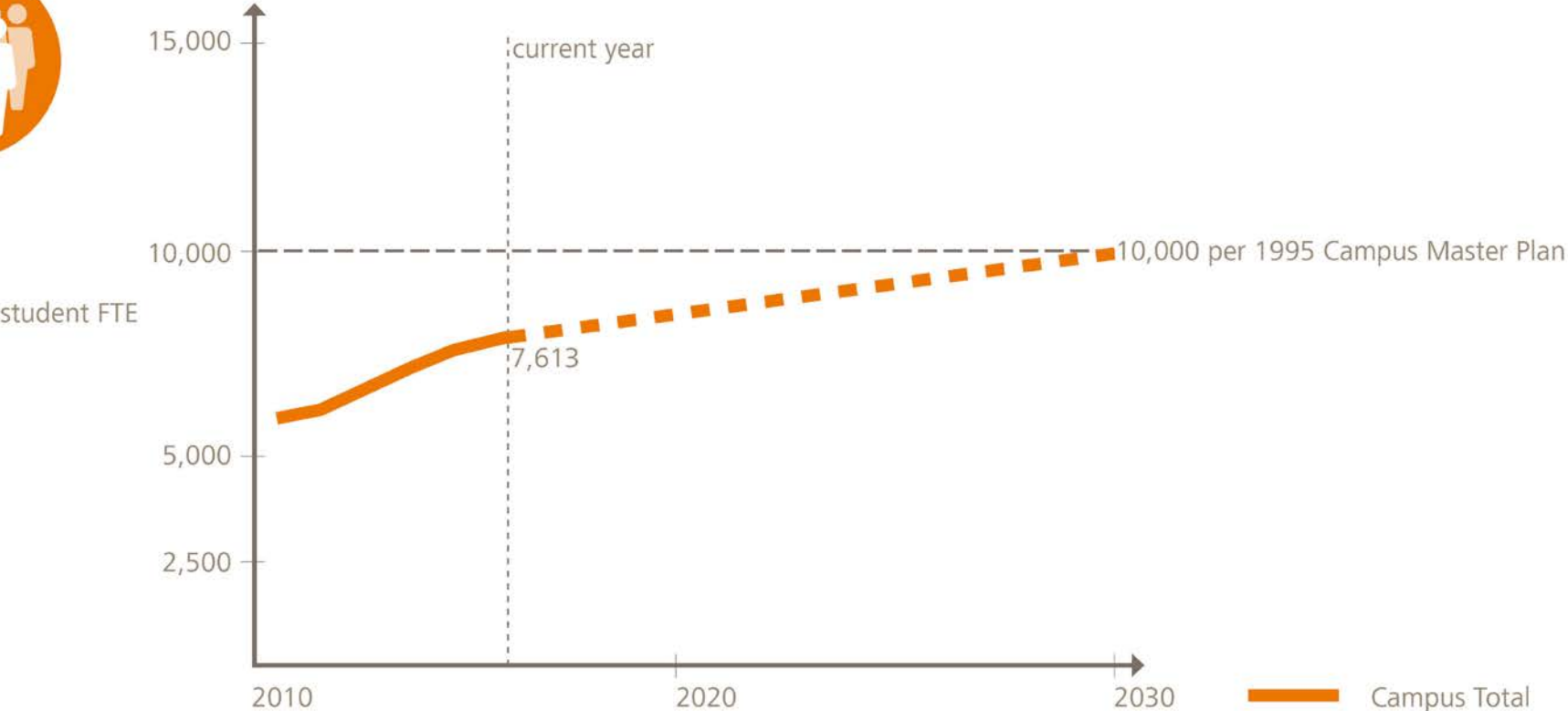


Academics,  
Research  
and Library



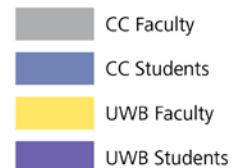
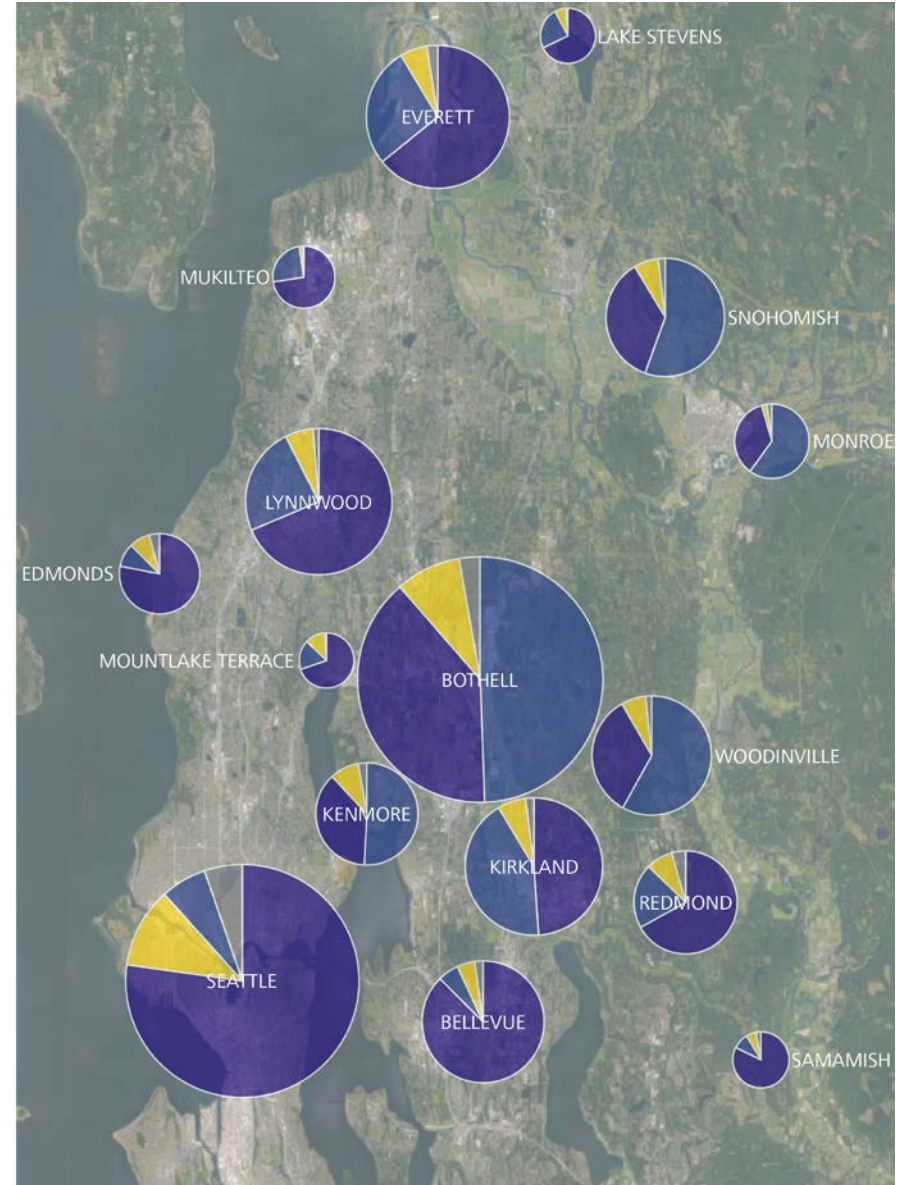
Financial  
Feasibility

# ENROLLMENT GROWTH ON CAMPUS



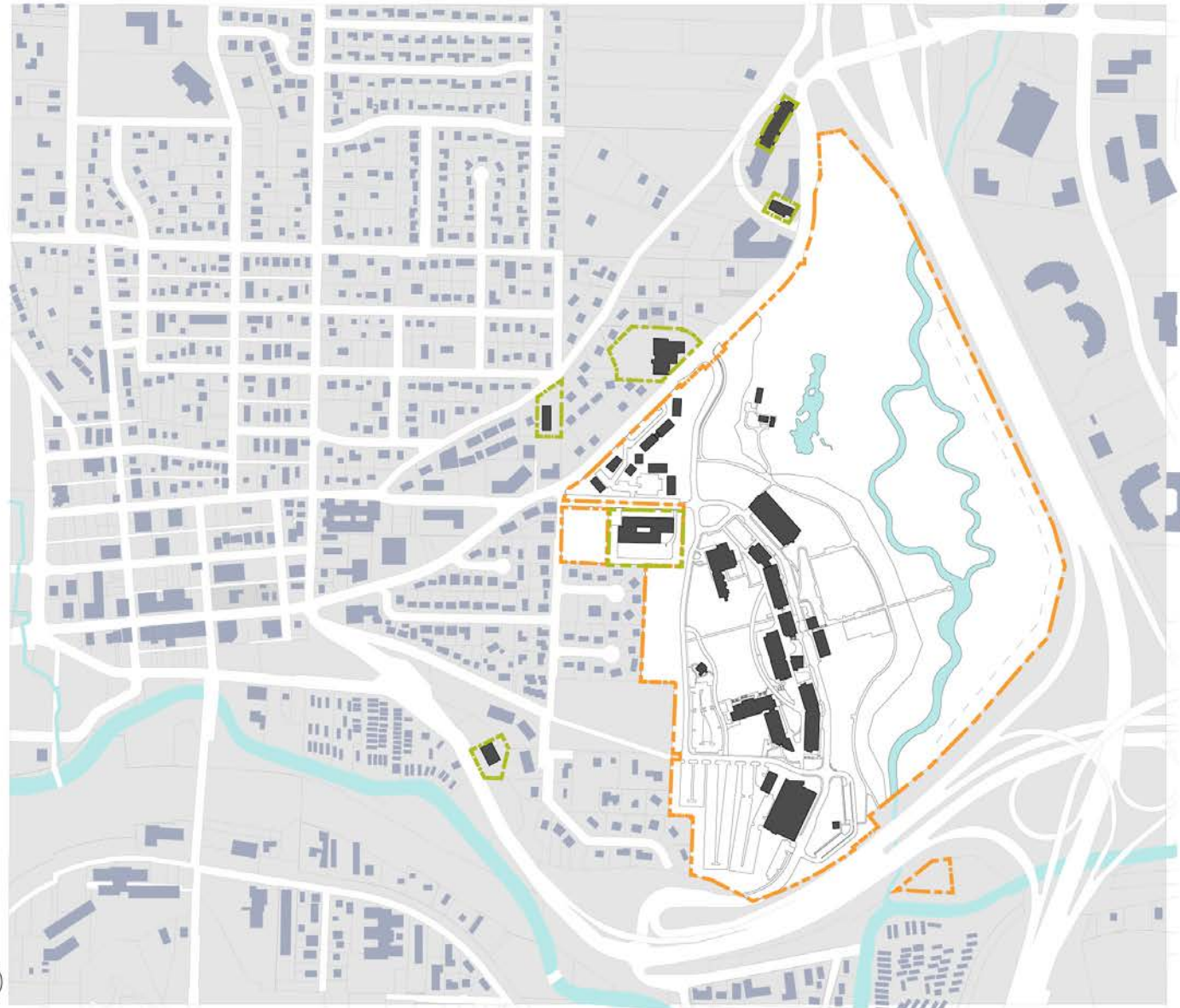


# DEMOGRAPHICS: UW BOTHELL / CASCADIA



# PROPERTIES: OWNED + LEASED

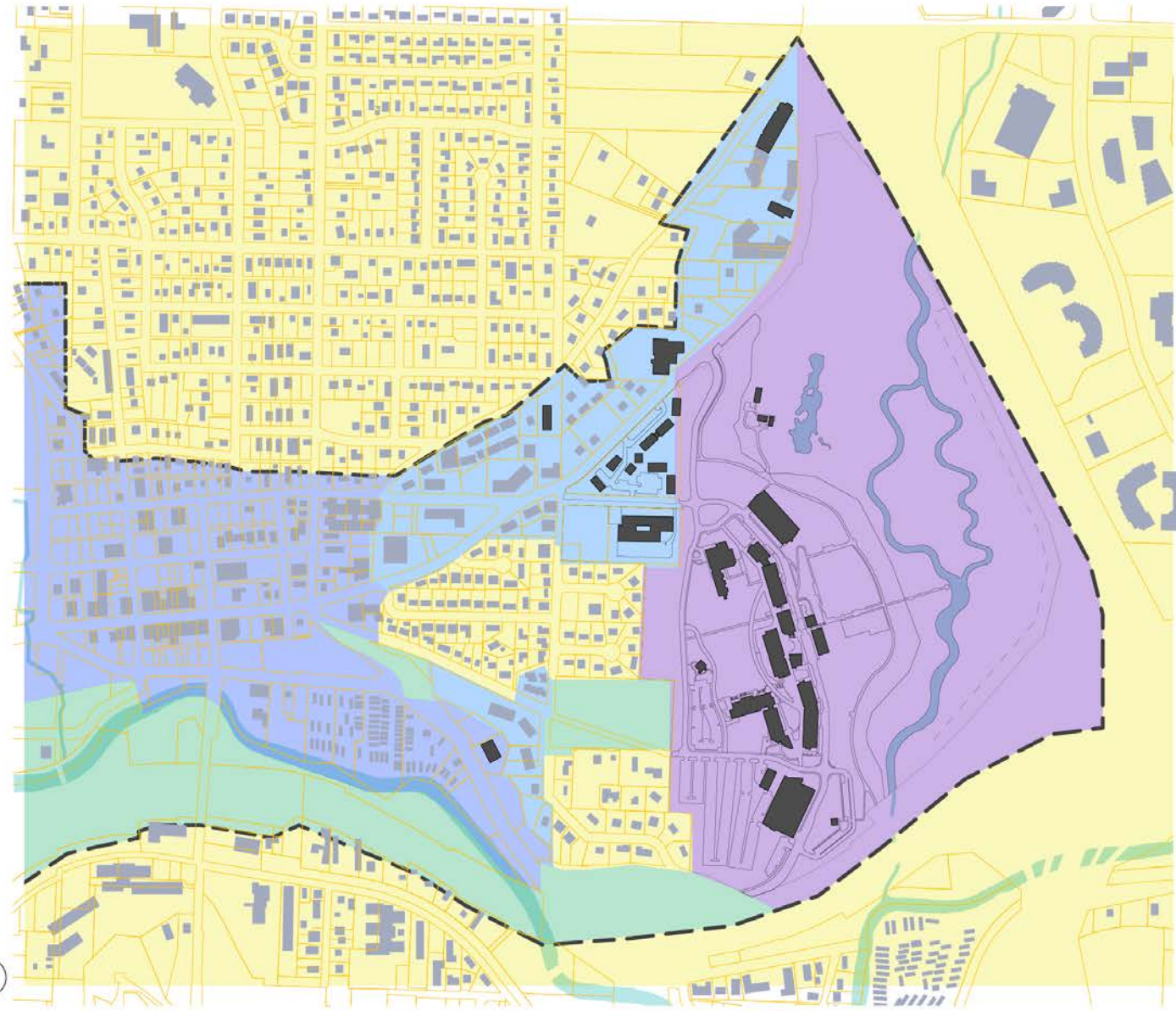
0 125 250 500'





# BOTHELL ZONING

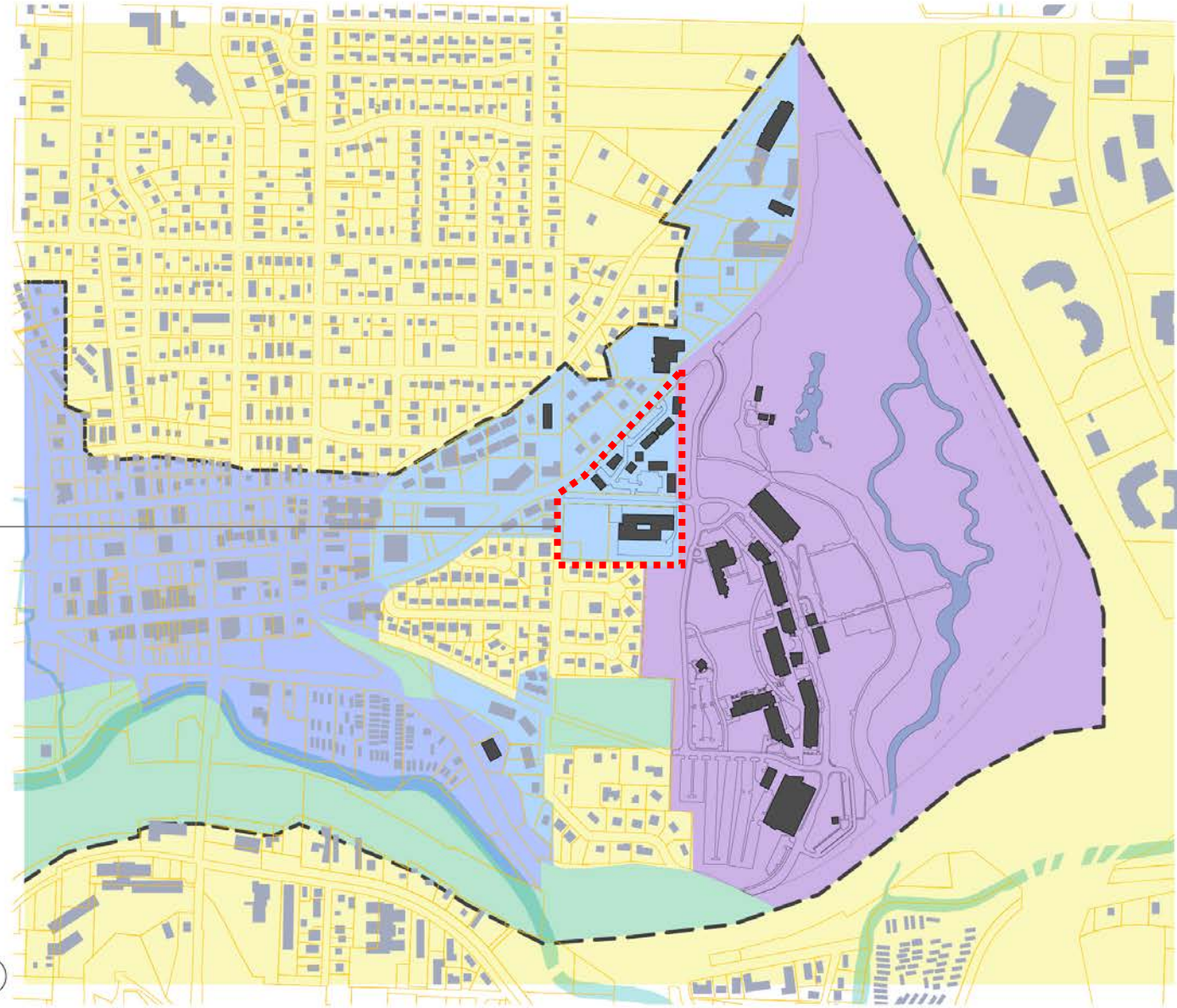
0 125 250 500'



# BOTHELL ZONING

proposed boundary  
revision per comp  
plan amendment

0 125 250 500'





# VEGETATION

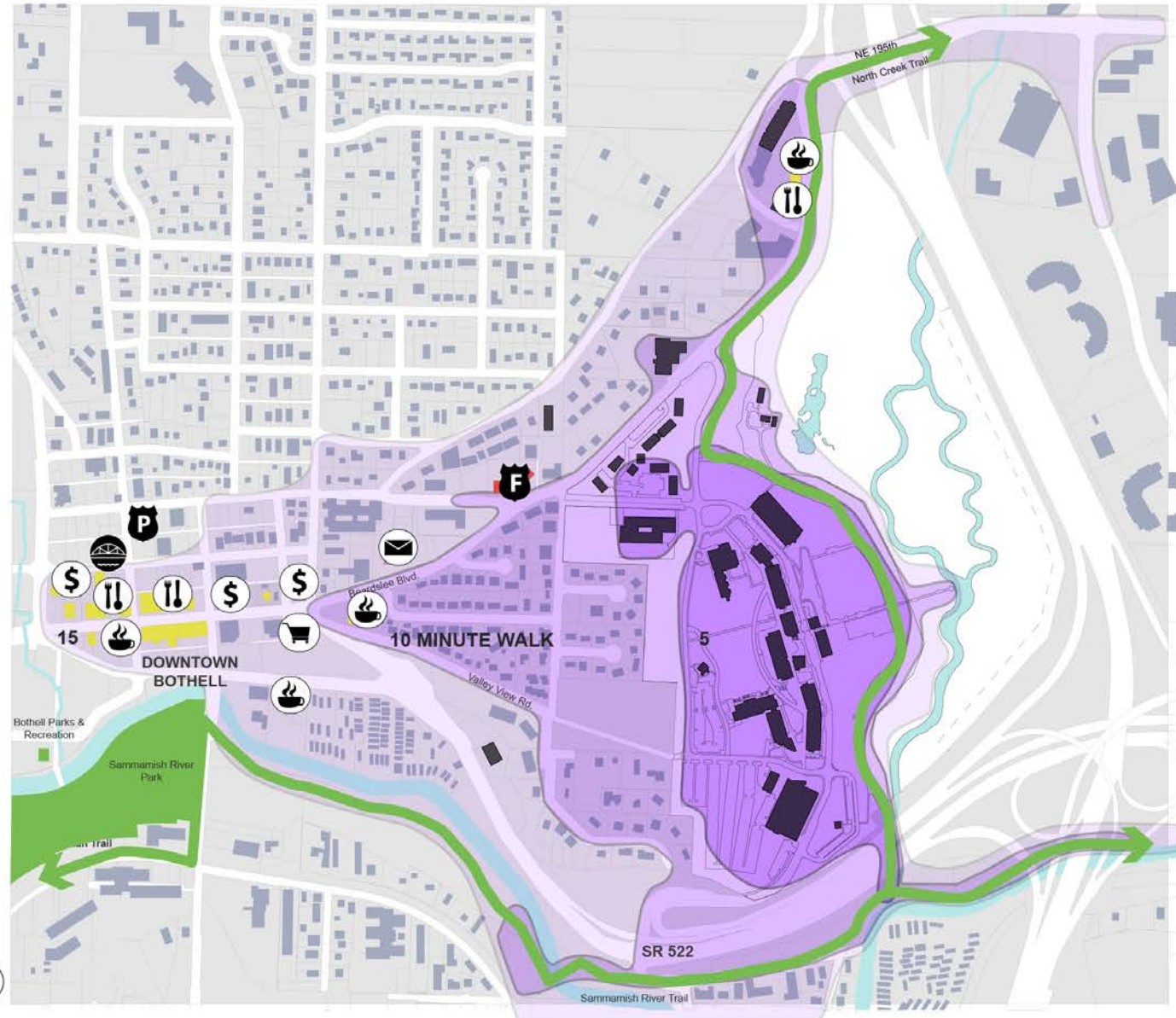


# TOPOGRAPHY





# WALK TIMES FROM CAMPUS CENTER

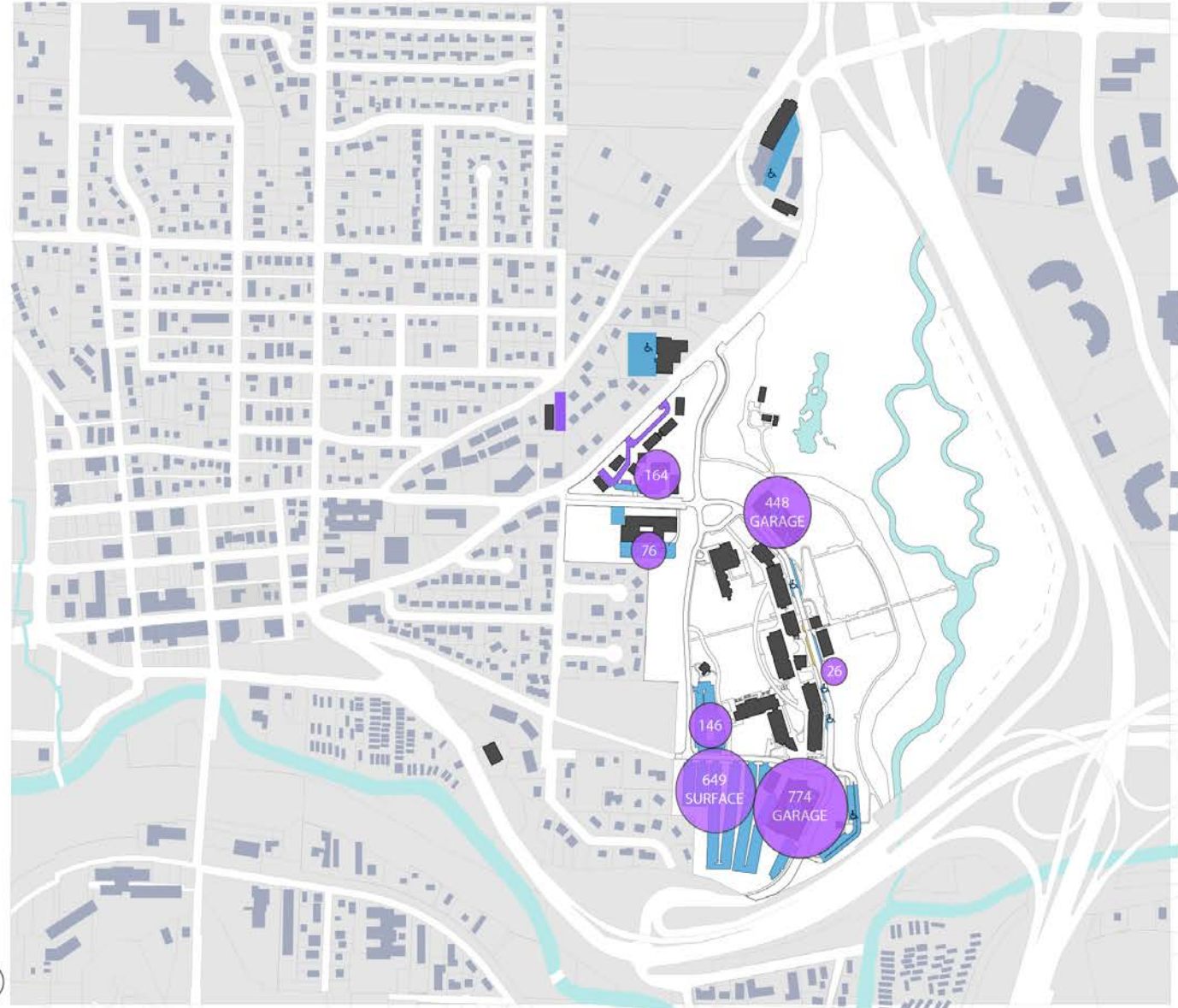


# CAMPUS ZONES





# PARKING CAPACITY



# PLANNING FOCUS AREAS



Parking,  
Transportation,  
and Mobility



Campus Growth  
and Capacity



Housing and  
Dining



Student Life



Landscape,  
Hydrology,  
and Ecology



Town-Gown  
Relationship



Infrastructure:  
Physical Plant  
and Utilities



Academics,  
Research  
and Library



Financial  
Feasibility