

POPULATION HEALTH FACILITY
UW Architecture Commission

AGENDA

- welcome + update
- project goals
- site observations
- massing influences
- next steps

PROJECT GOALS

Foster collaboration and connectivity amongst those working within the facility, with other programs and with researchers at UW, local and global partners, and students

Promote healthy living within and around the new facility

Design space that is flexible and adaptable to meet the evolving needs of IHME, DGH and SPH

Employ best practices in sustainable building to reduce energy and water use, lower life cycle costs, and improve occupant satisfaction and health

Support and **further the institution-wide population health vision.**

PROJECT GOALS

Estimated building size: 300,000 GSF

Anticipated Program

- Offices: single & multiple occupancy, open work stations
- Collaborative group work areas
- Conference / meeting spaces
- Instructional space
- Computing laboratories
- Possible street facing community-oriented destinations that help activate the neighborhood
- Outdoor spaces associated with program and campus needs

*Research wet laboratories are not part of the scope.

TIMELINE

09/16 - 04/17 EIS + site selection

05/17 – 05/18 design + preconstruction

02/18 – 05/18 demolition + excavation

06/18 - 03/20 construction

03/20 – 10/20 move-in + closeout



SITE OBSERVATIONS

CENTRAL CAMPUS PLAN



WEST CAMPUS PLAN



WEST CAMPUS PLAN



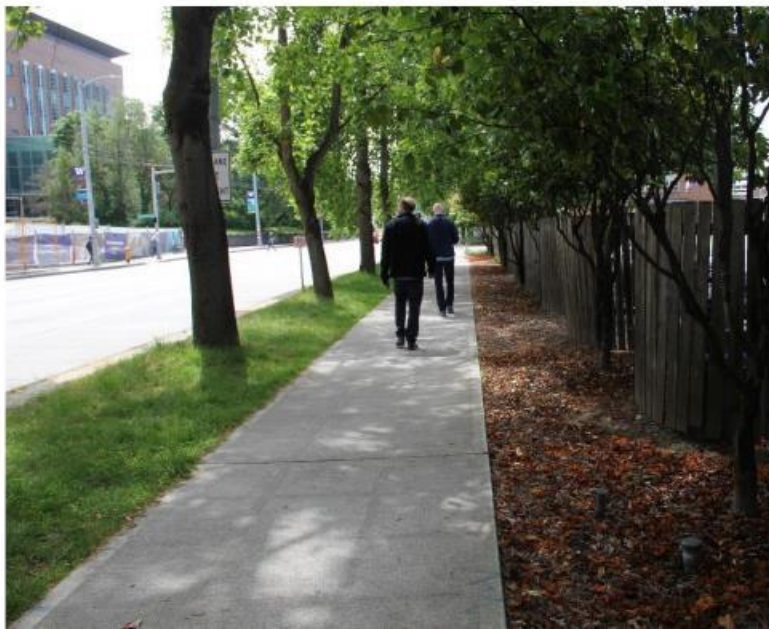
LANDSCAPE TYPOLOGIES



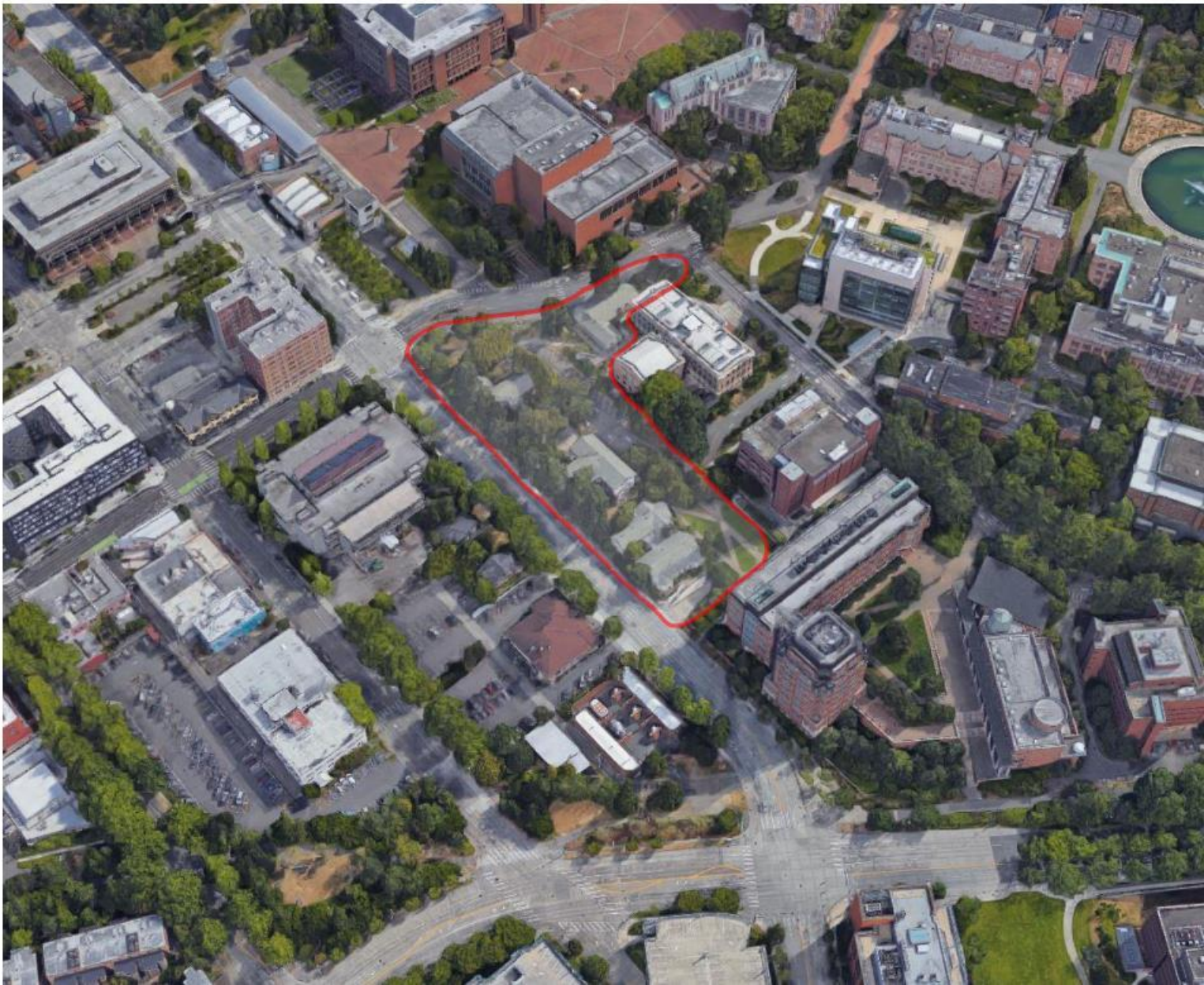
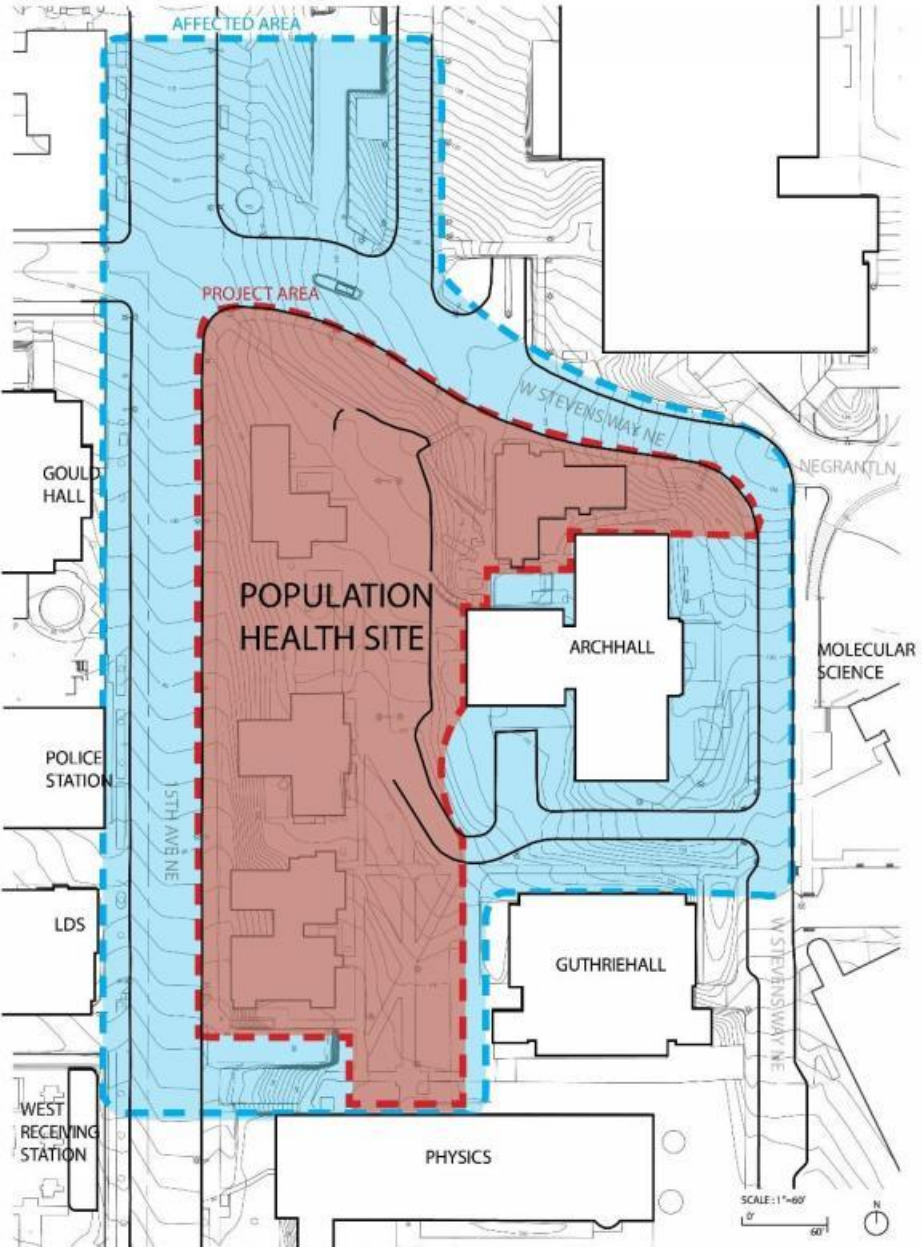
15TH AVE NE CORRIDOR – EAST SIDE (looking north)



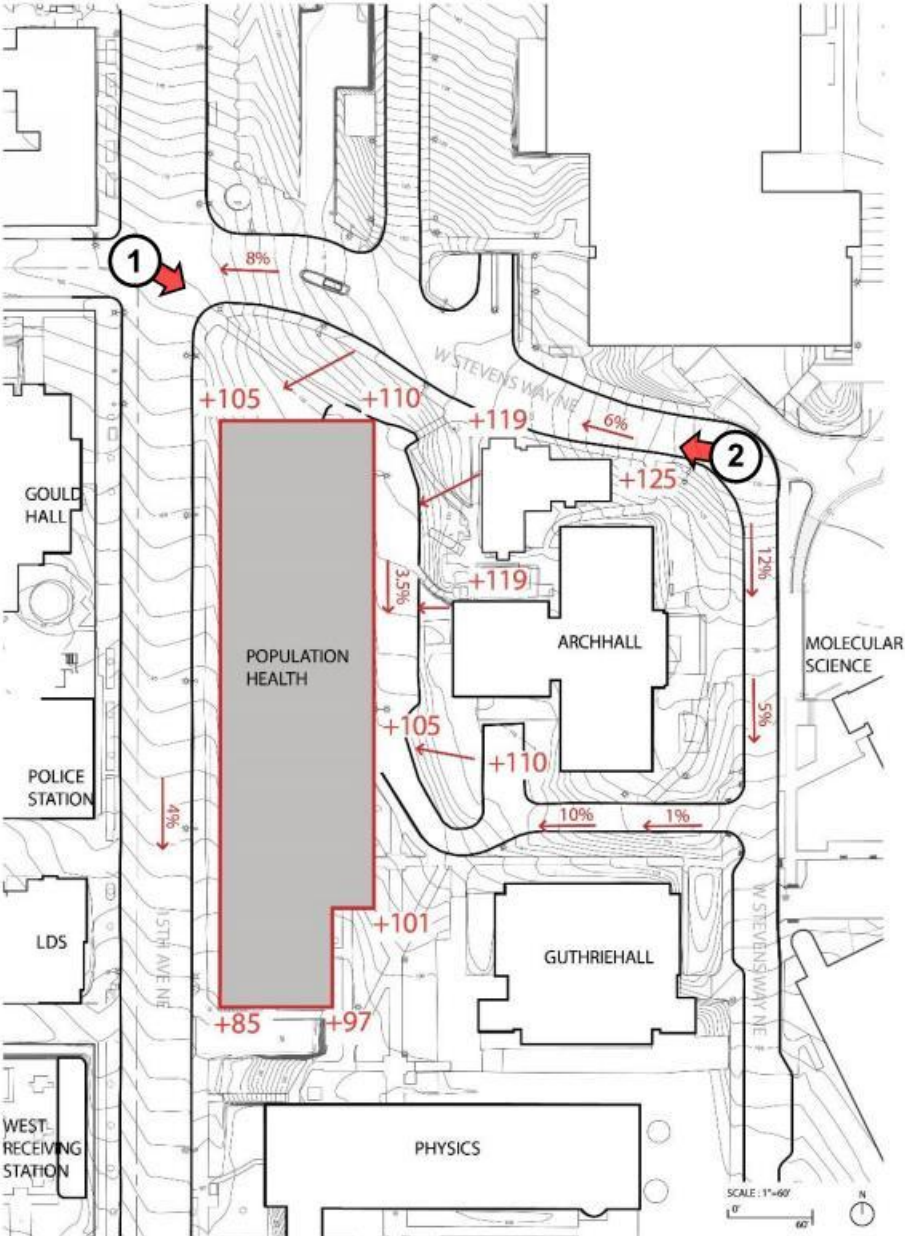
15TH AVE NE CORRIDOR – WEST SIDE (looking south)



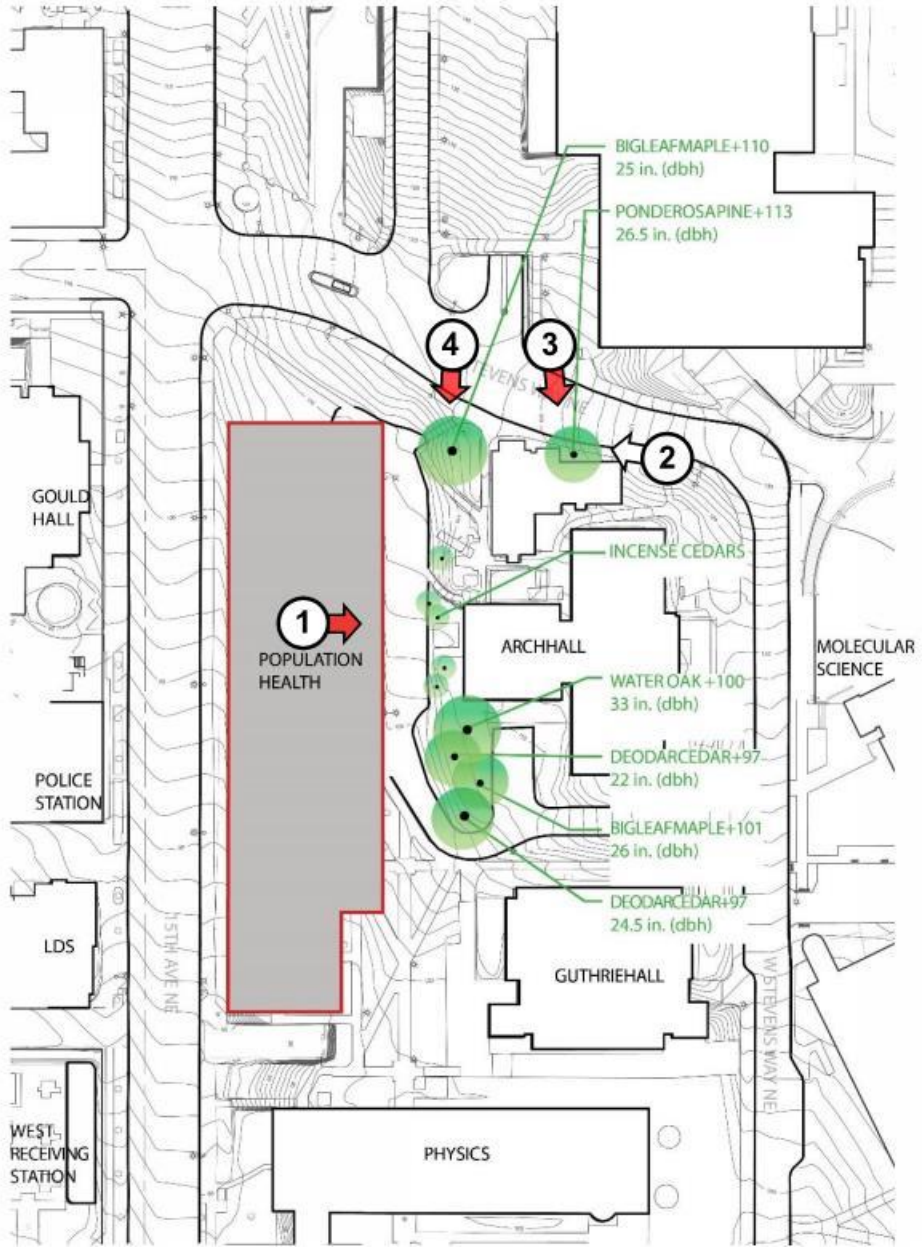
SITE AREA



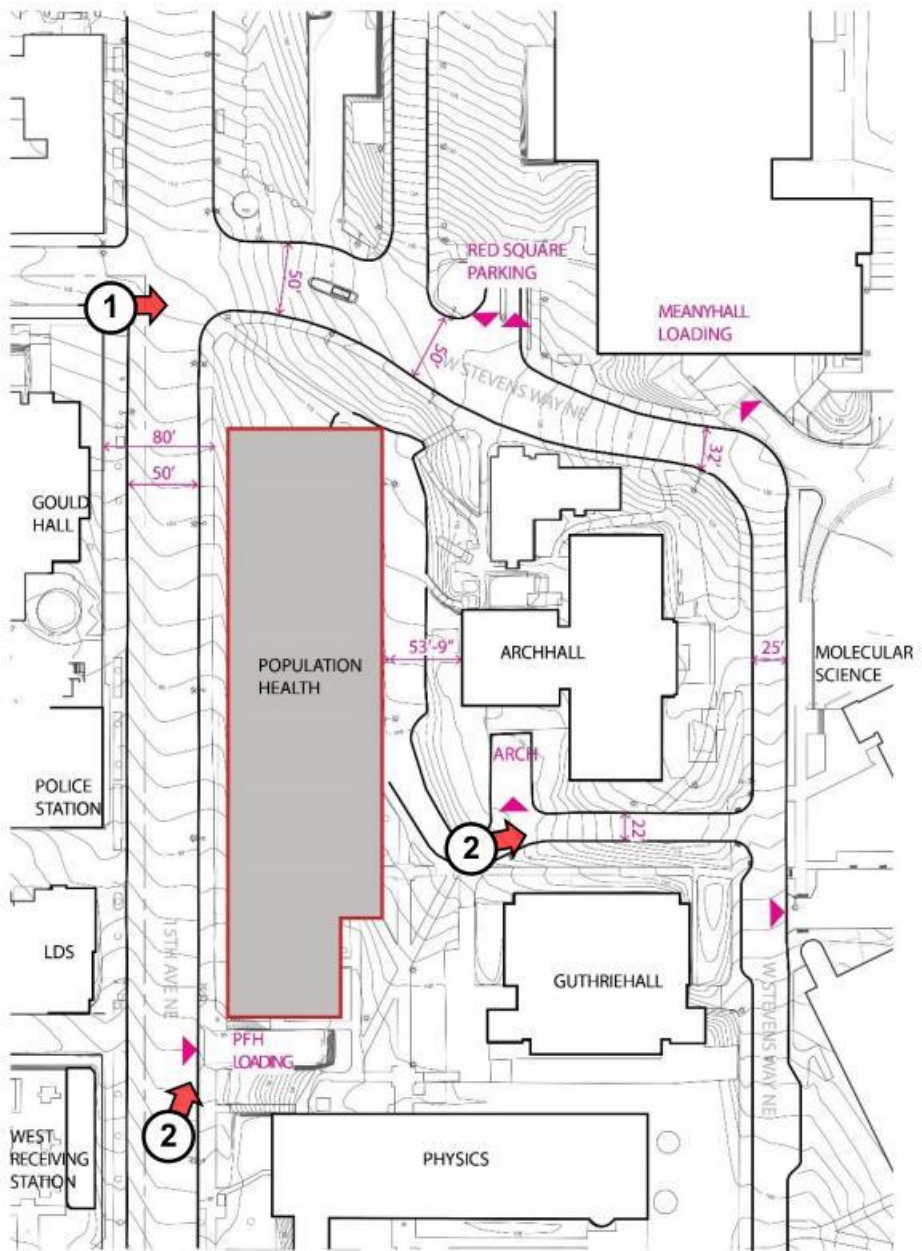
TOPOGRAPHY



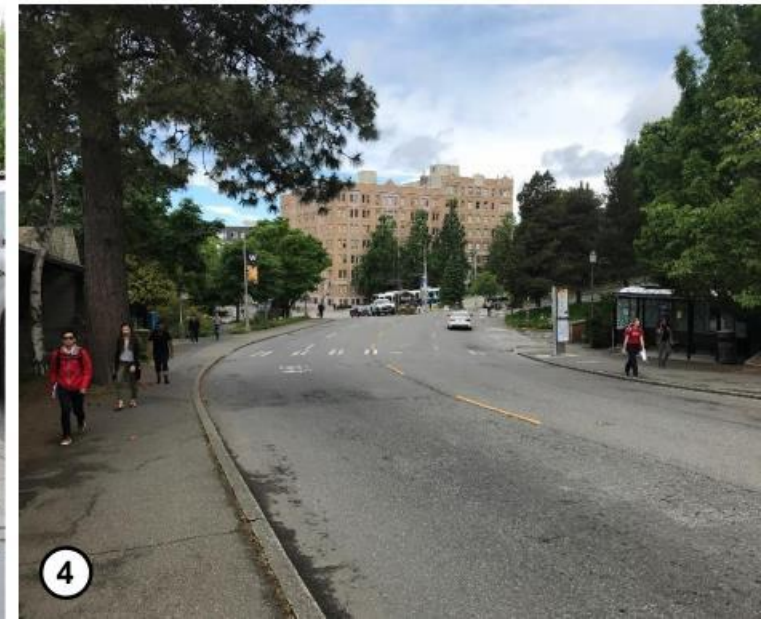
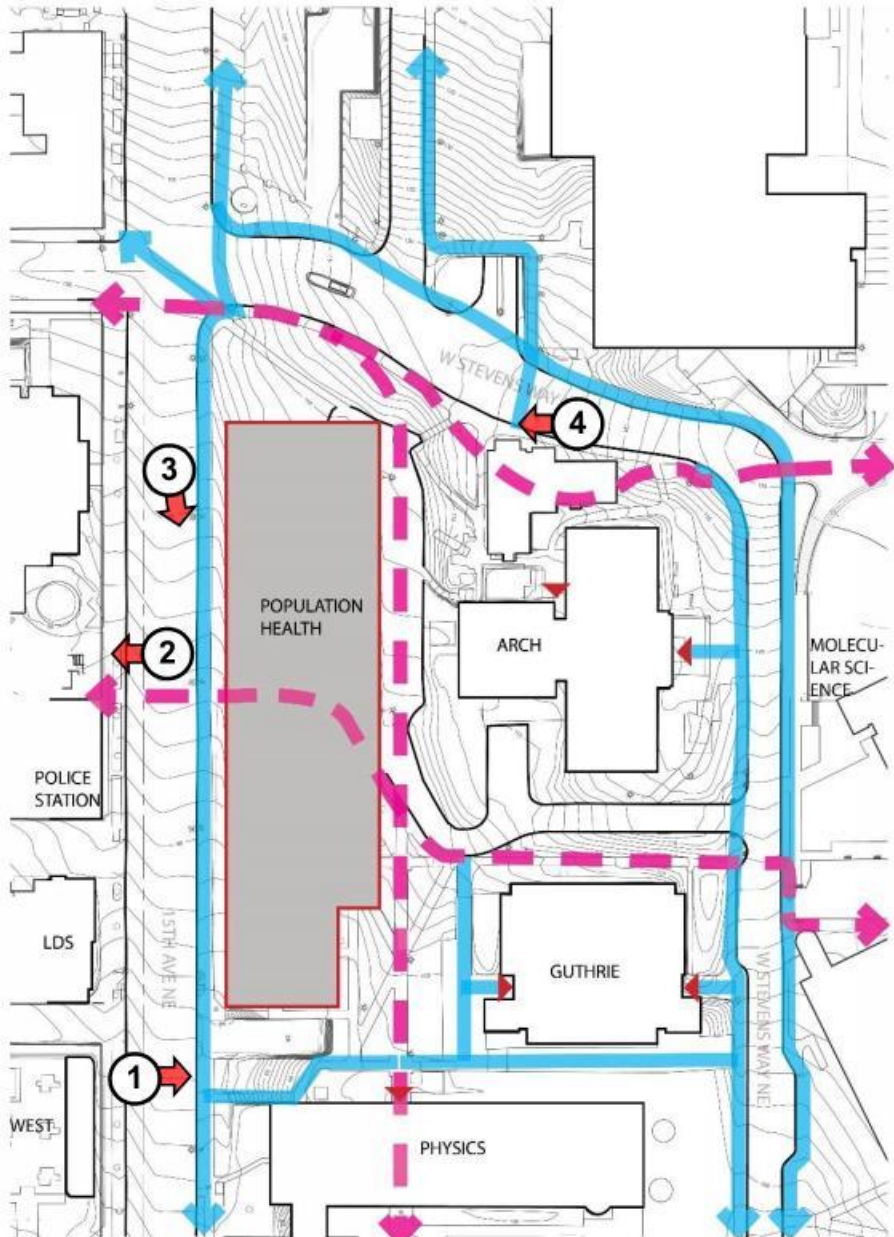
TREE PRESERVATION



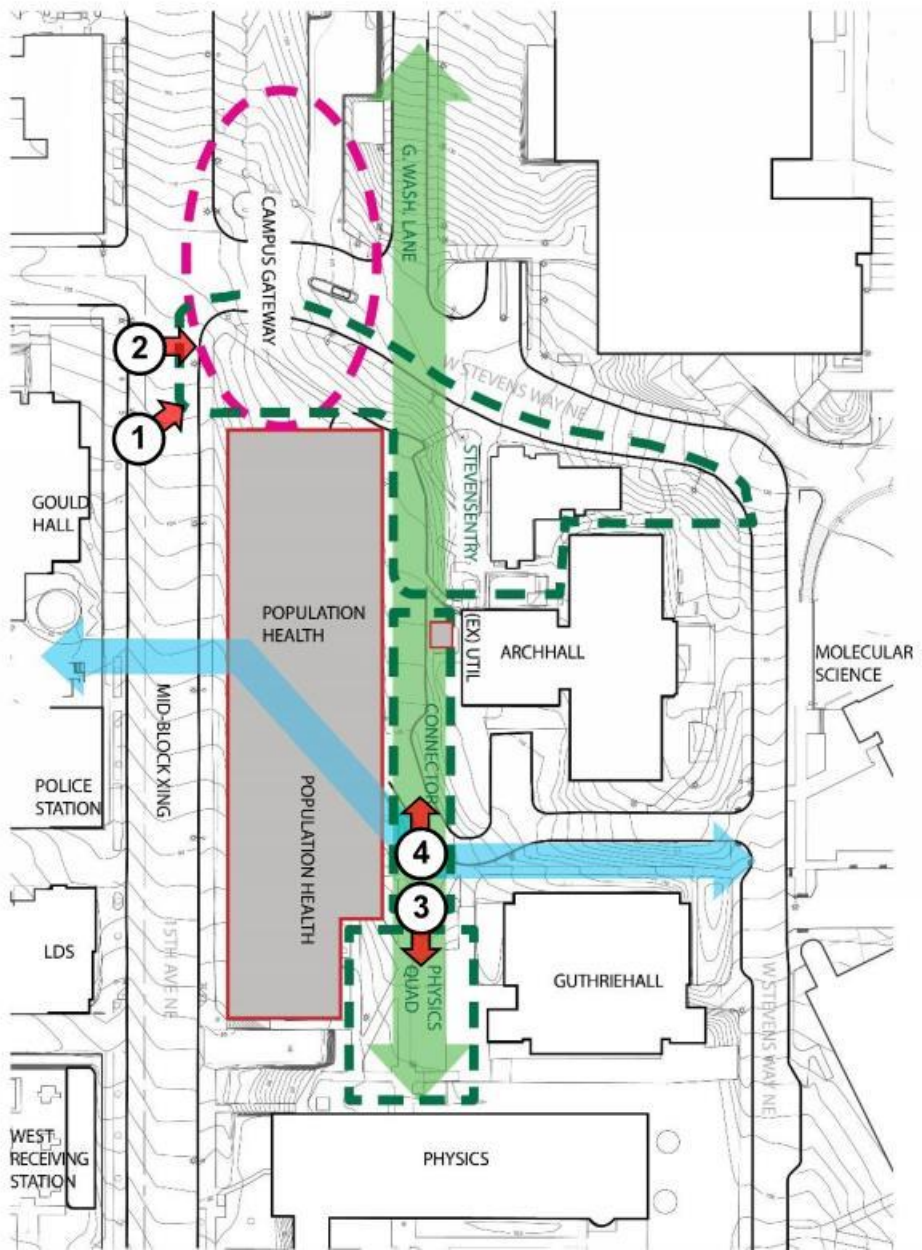
VEHICLES



PEDESTRIANS



OPEN SPACE

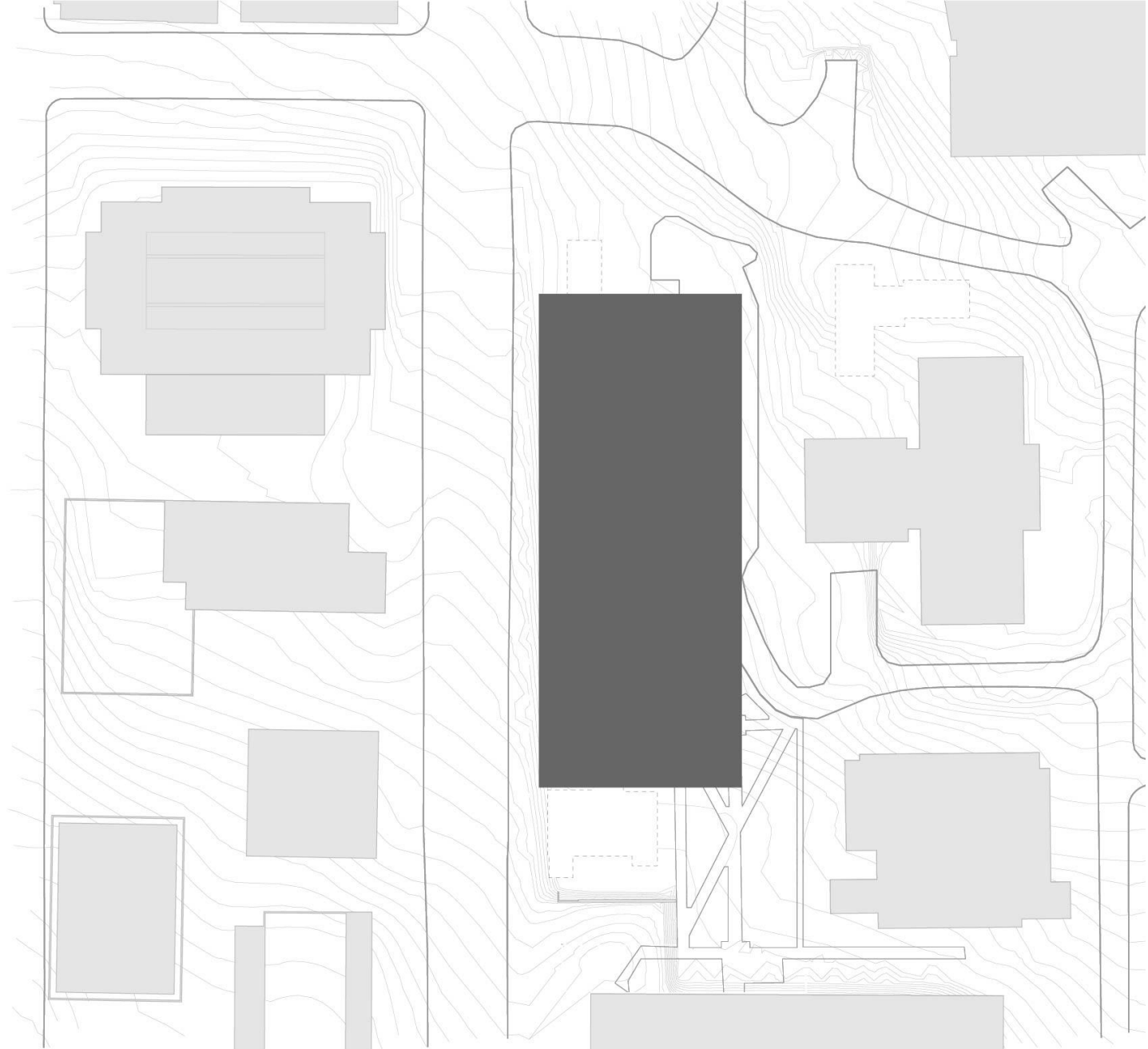


ARCHITECTURAL OBSERVATIONS

What does this building

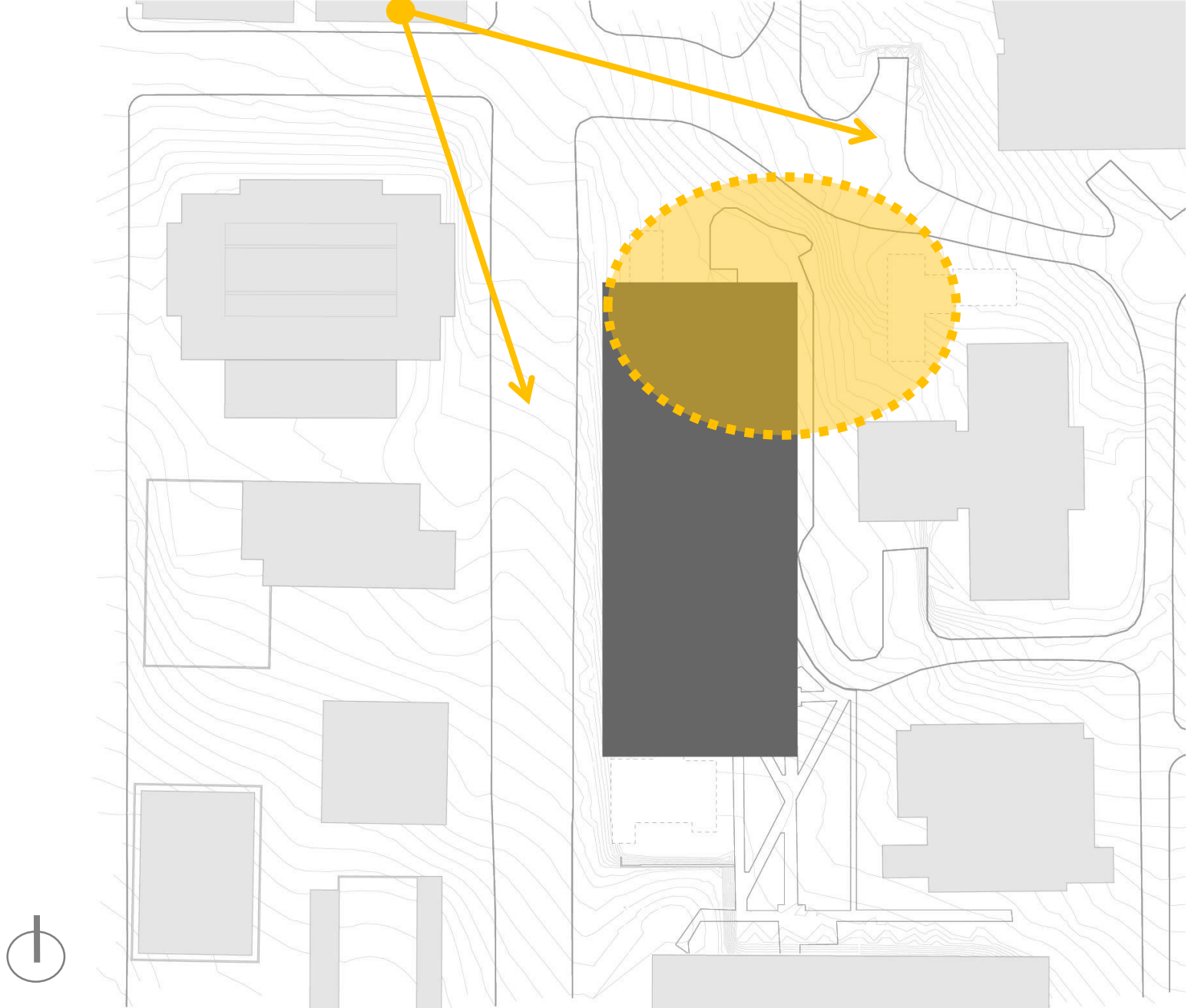
want to be?

[with no backside]



PUBLIC WELCOME

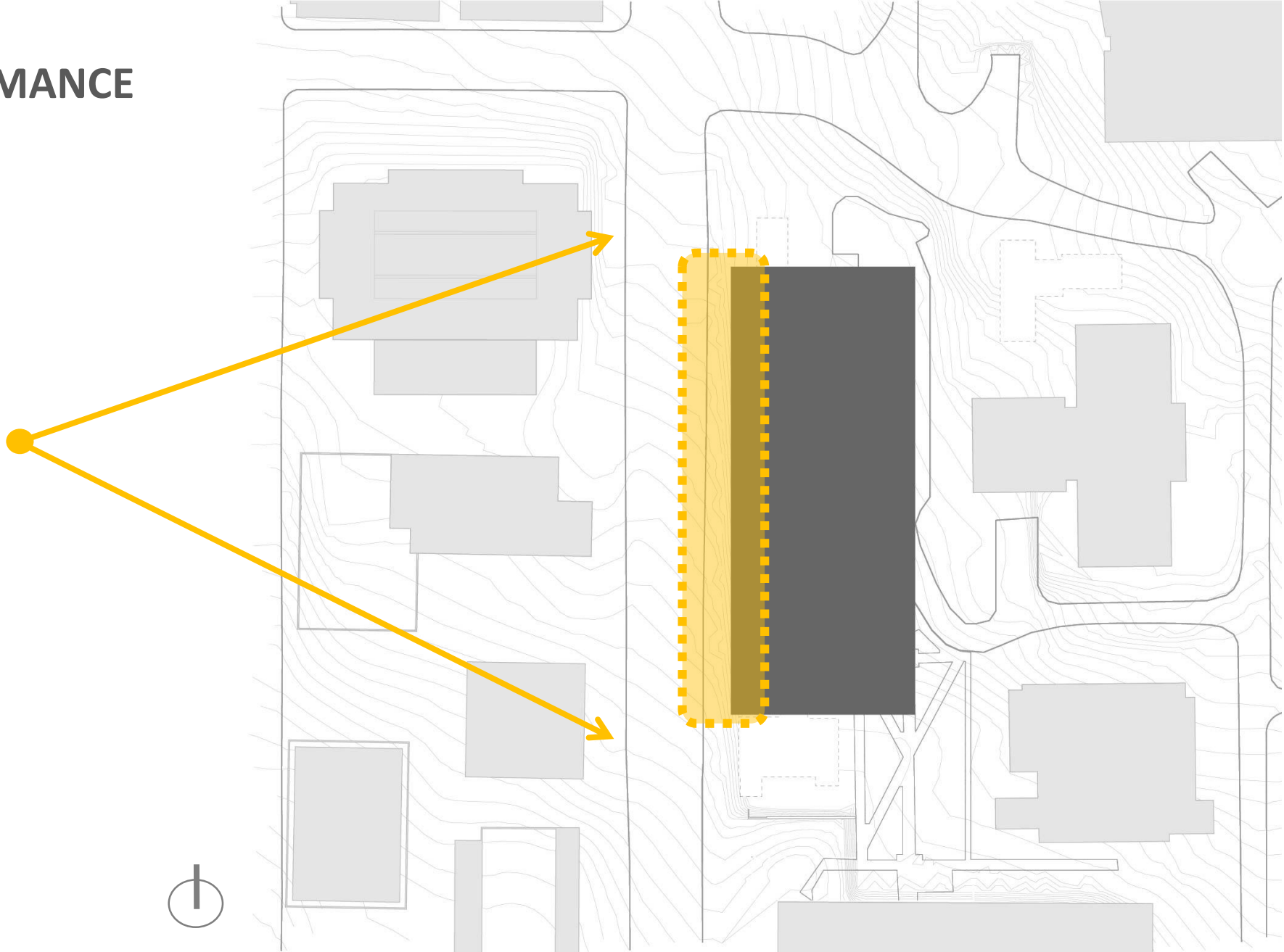
[AND SHARED SPACE WITH
ARCHITECTURE HALL]





Google

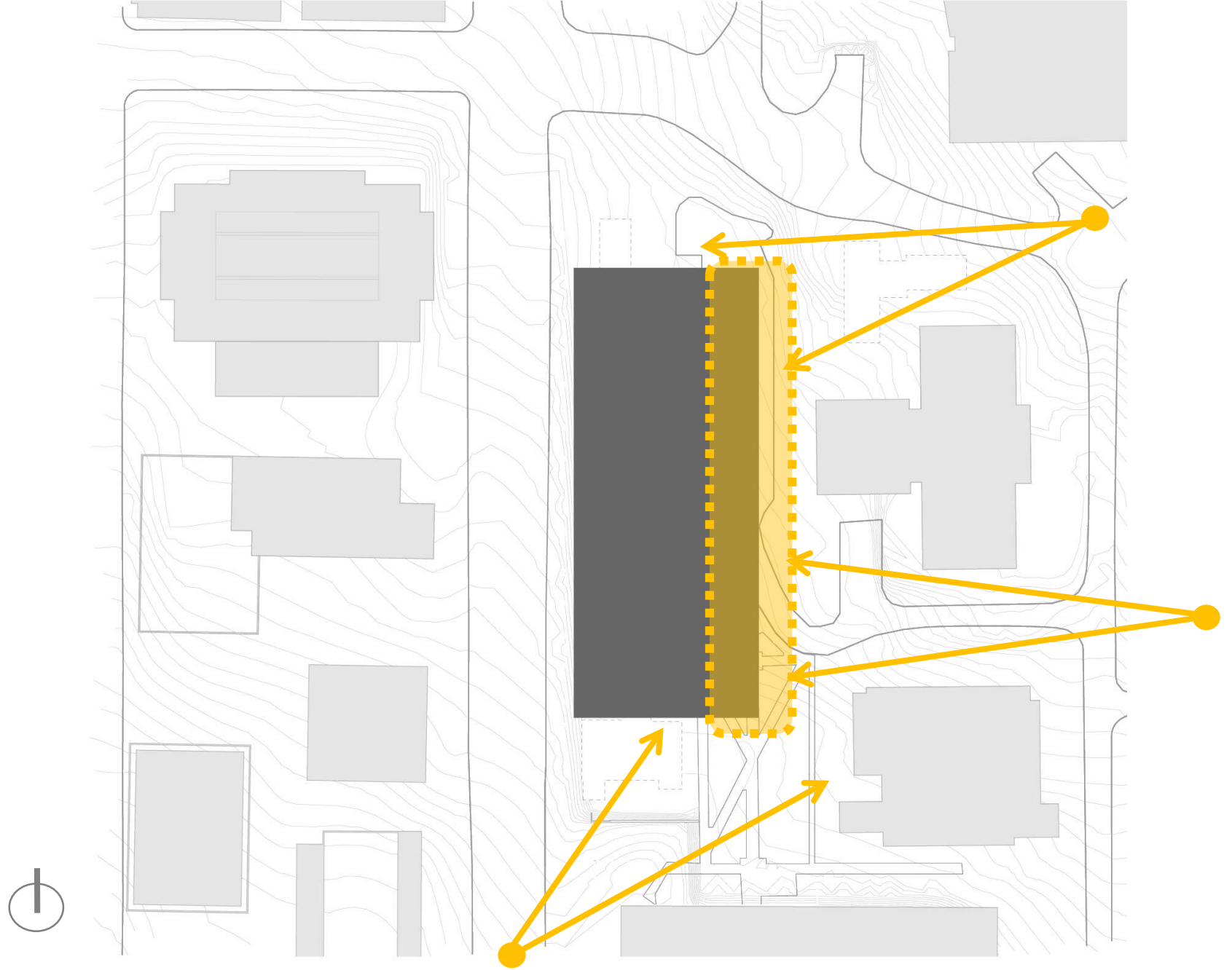
**HIGH PERFORMANCE
+ ACTIVATION**
[MICRO/MACRO]



**HIGH PERFORMANCE
+ ACTIVATION
[MICRO/MACRO]**



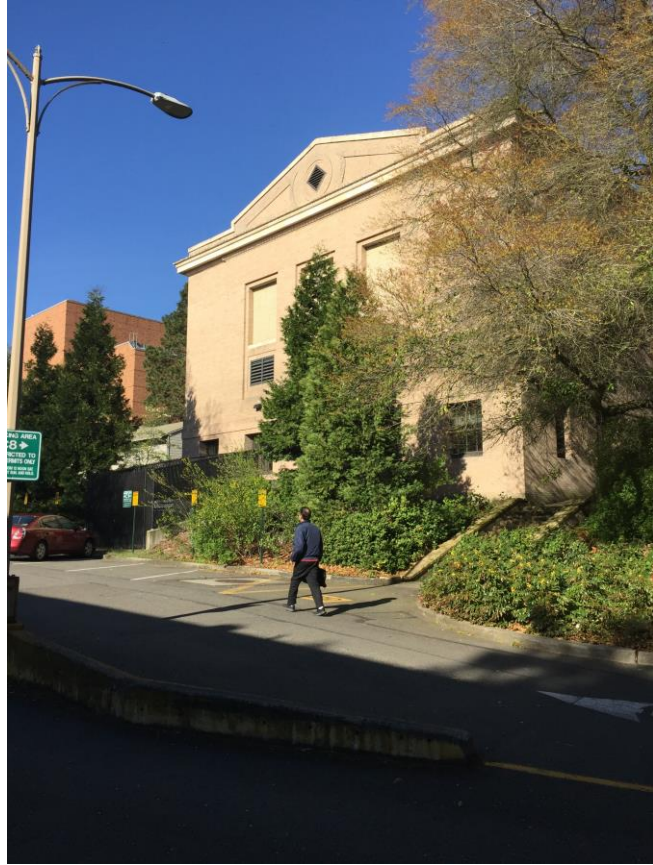
SENSITIVE NEIGHBOR



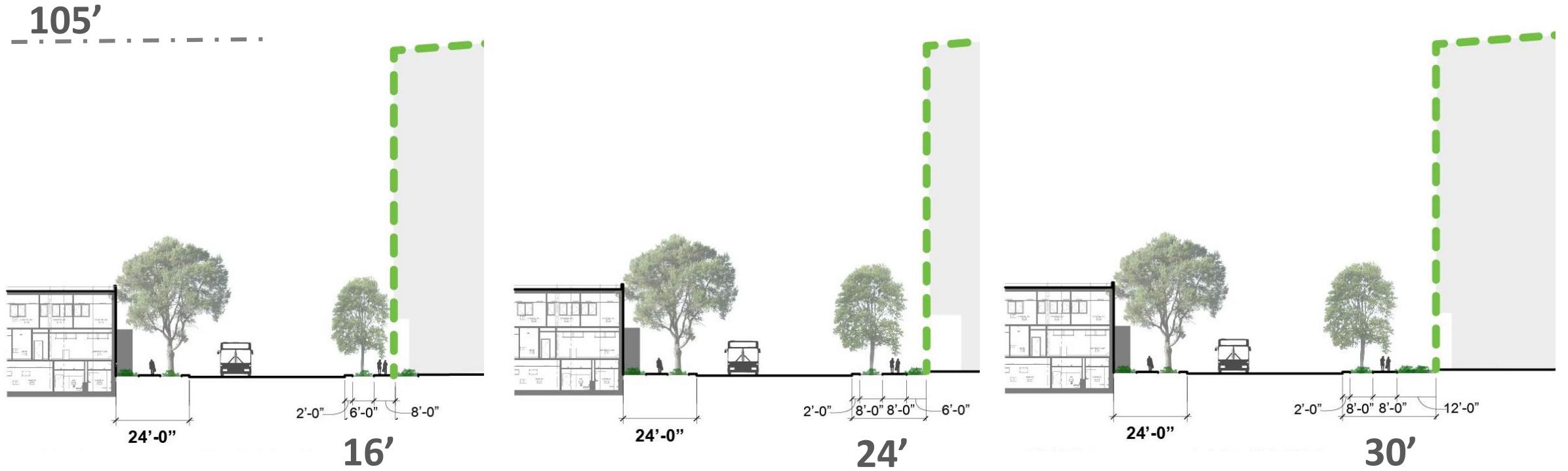


Google

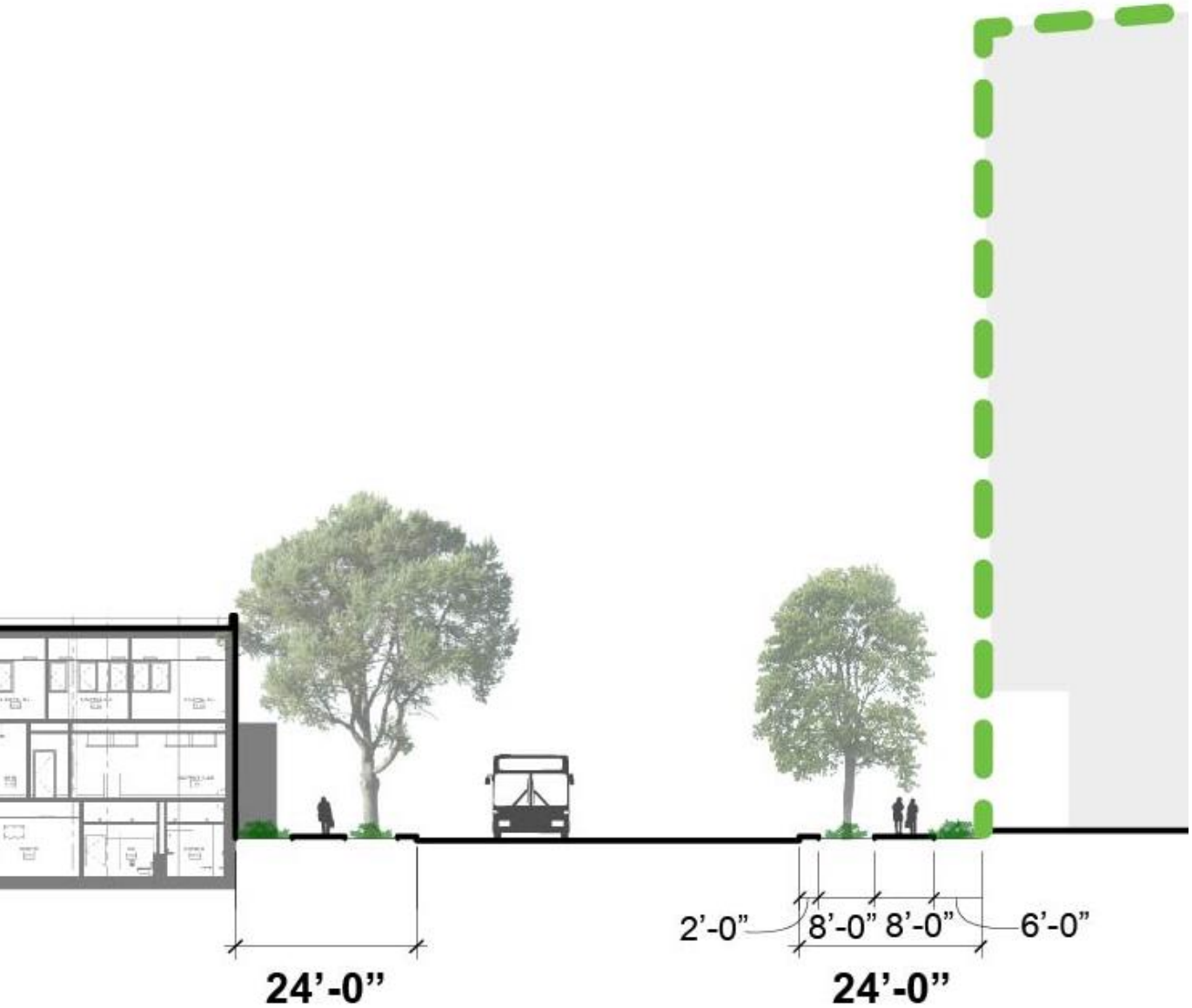
SENSITIVE NEIGHBOR



STREET SETBACK



STREET SETBACK



EAST SIDE SETBACK

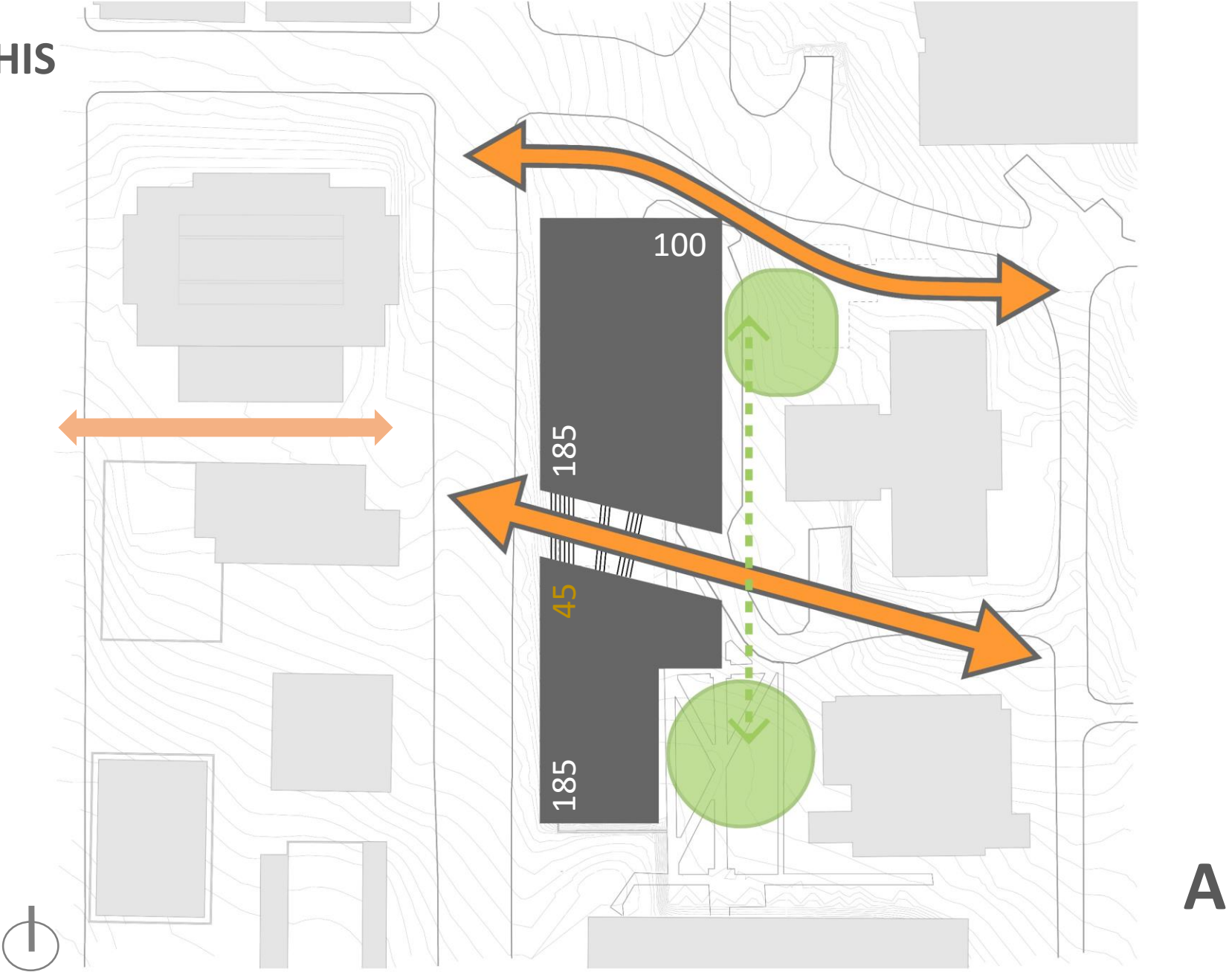


EAST SIDE SETBACK

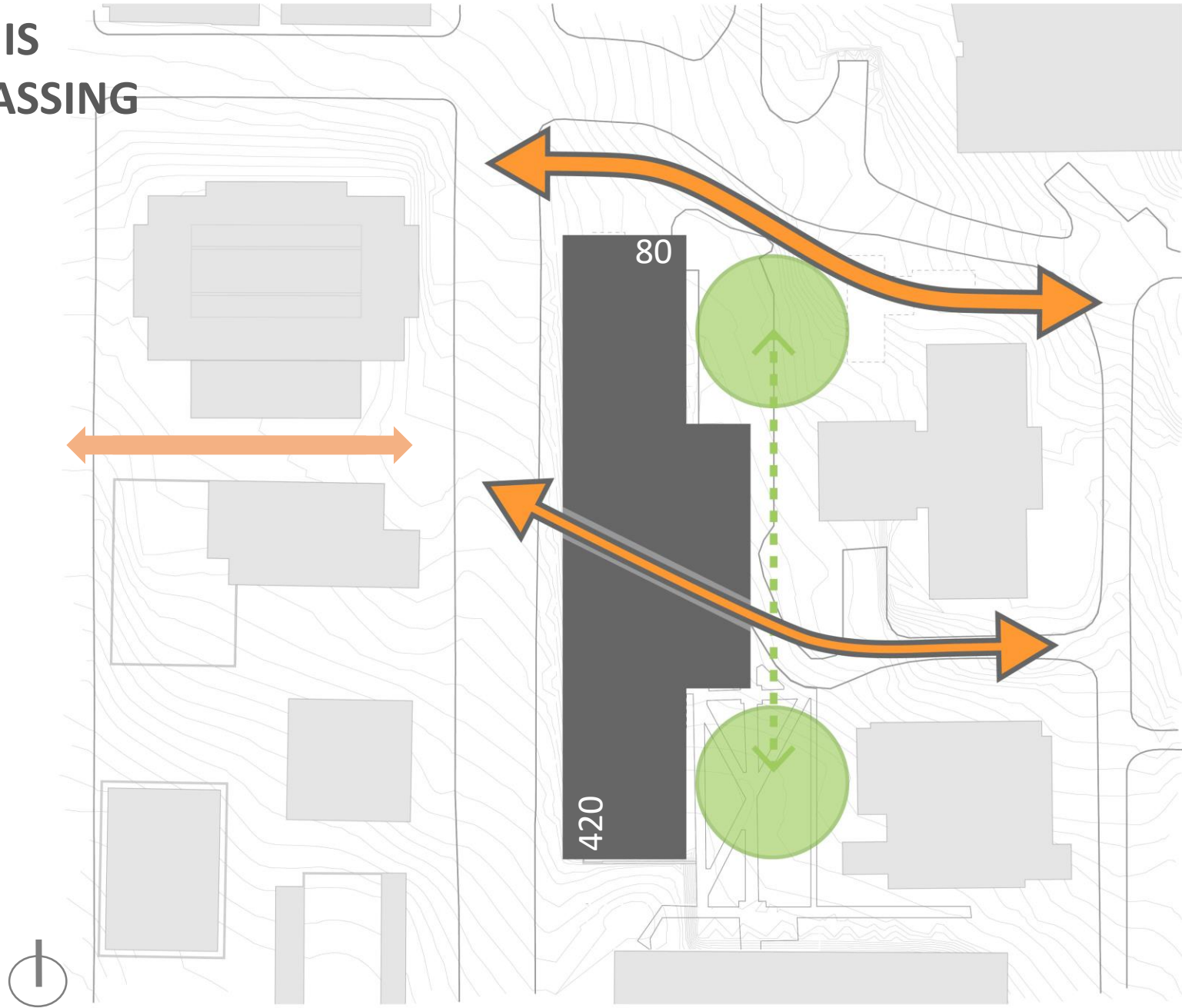


**HOW DOES THIS
INFLUENCE
MASSING
OPTIONS?**

HOW DOES THIS
INFLUENCE
MASSING
OPTIONS?

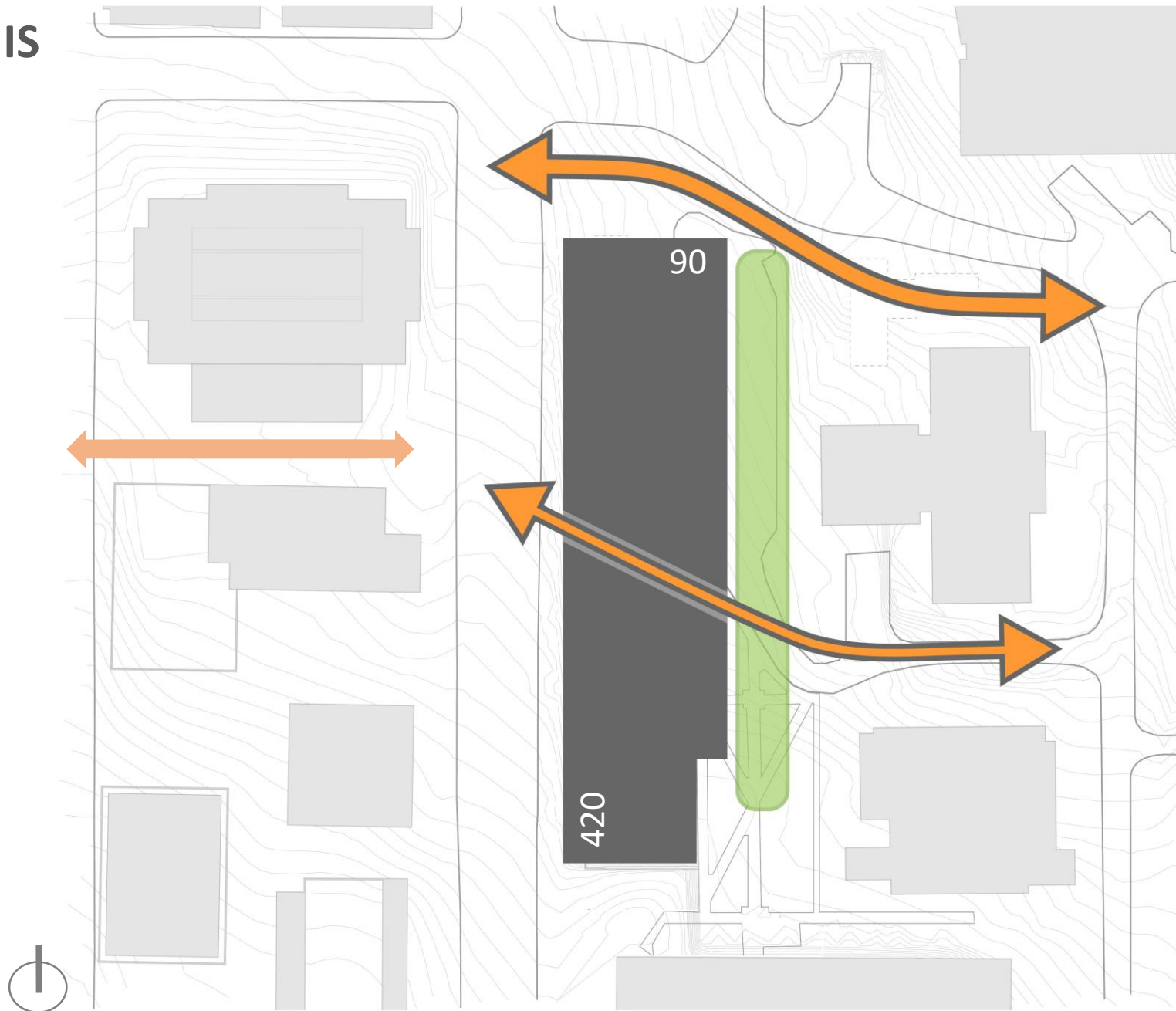


HOW DOES THIS
INFLUENCE MASSING
OPTIONS?



B1

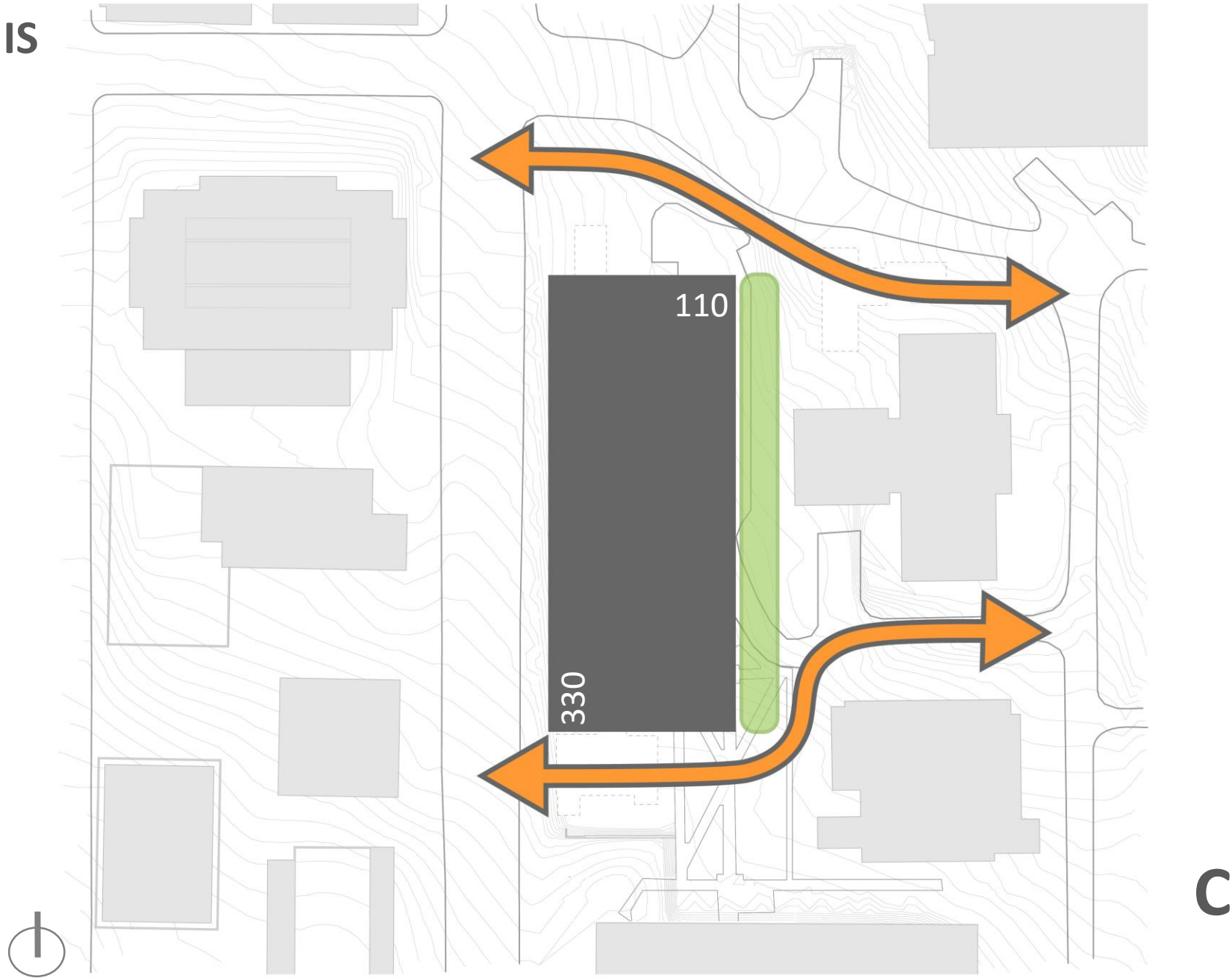
HOW DOES THIS
INFLUENCE
MASSING
OPTIONS?



B2



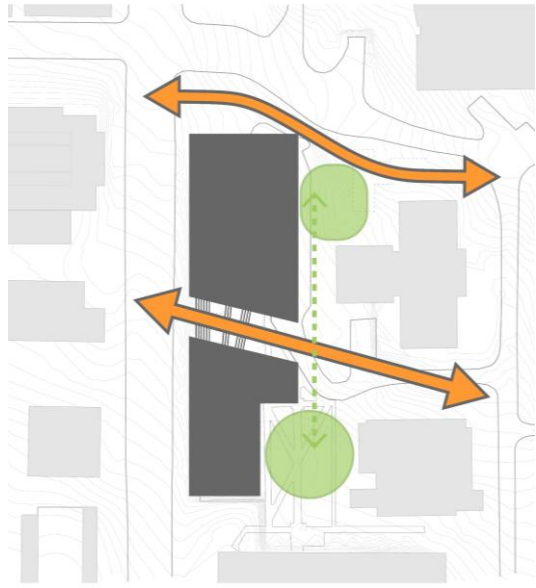
HOW DOES THIS
INFLUENCE
MASSING
OPTIONS?







MASSING COMPARISONS



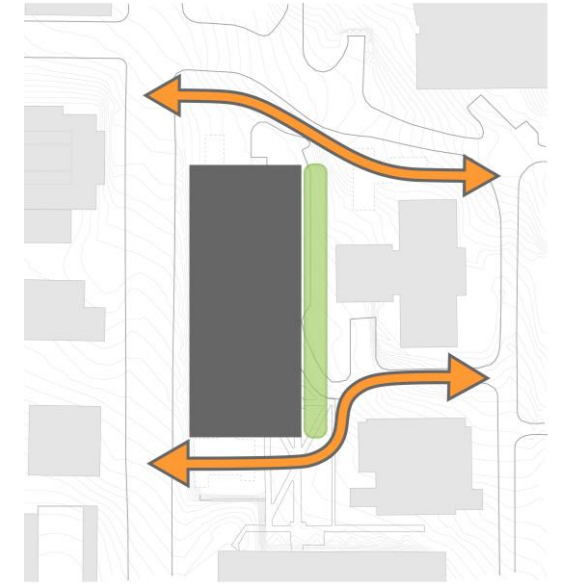
A



B1



B2



C

POPULATION HEALTH FACILITY
UW Architecture Commission