



University  
of Washington

Computer  
Science &  
Engineering  
Building II

**LMA** Architecture  
Urban Design  
Interiors



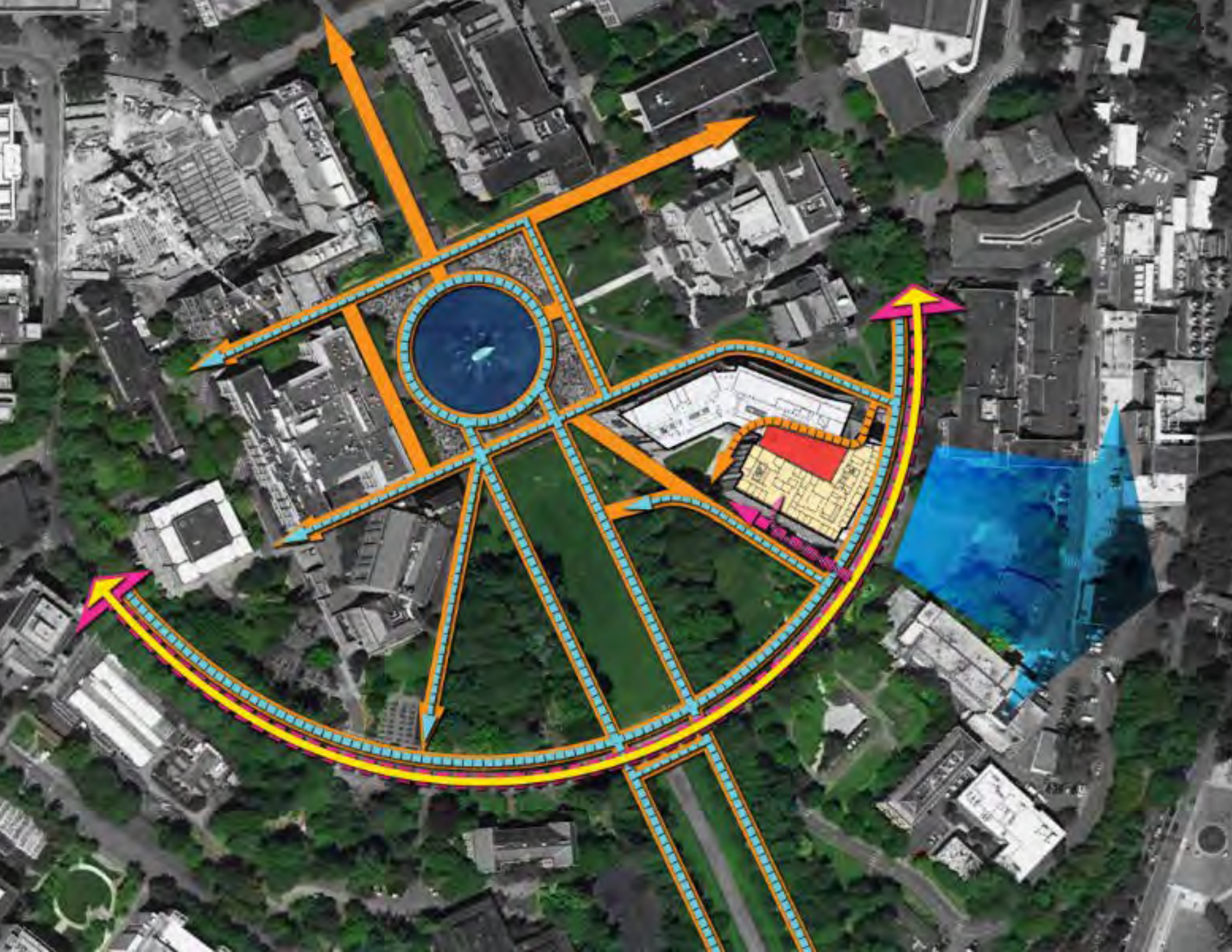
## PROJECT GOALS

- Create a Unified Complex for Computer Science & Engineering
- Provide Qualitative Parity
- Foster Collaboration Among Faculty, Students and Staff
- Enhance the Sense of Community for CSE Undergrads
- Provide Flexible Instructional and Research Spaces
- Maximize Natural Daylight
- Create Multiple Secure Zones
- Enhance Campus Connections & Landscape









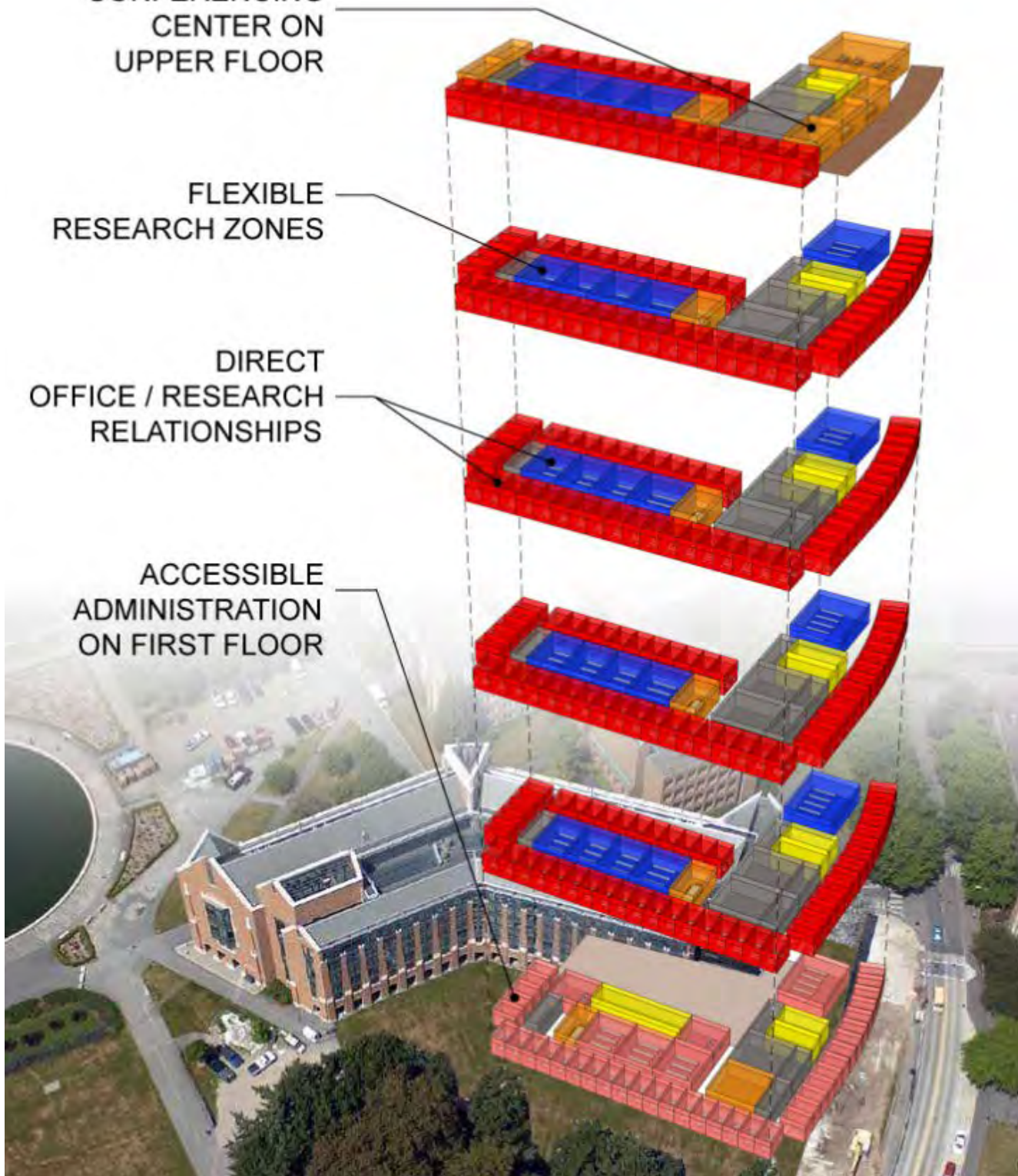


CONFERENCING  
CENTER ON  
UPPER FLOOR

FLEXIBLE  
RESEARCH ZONES

DIRECT  
OFFICE / RESEARCH  
RELATIONSHIPS

ACCESSIBLE  
ADMINISTRATION  
ON FIRST FLOOR



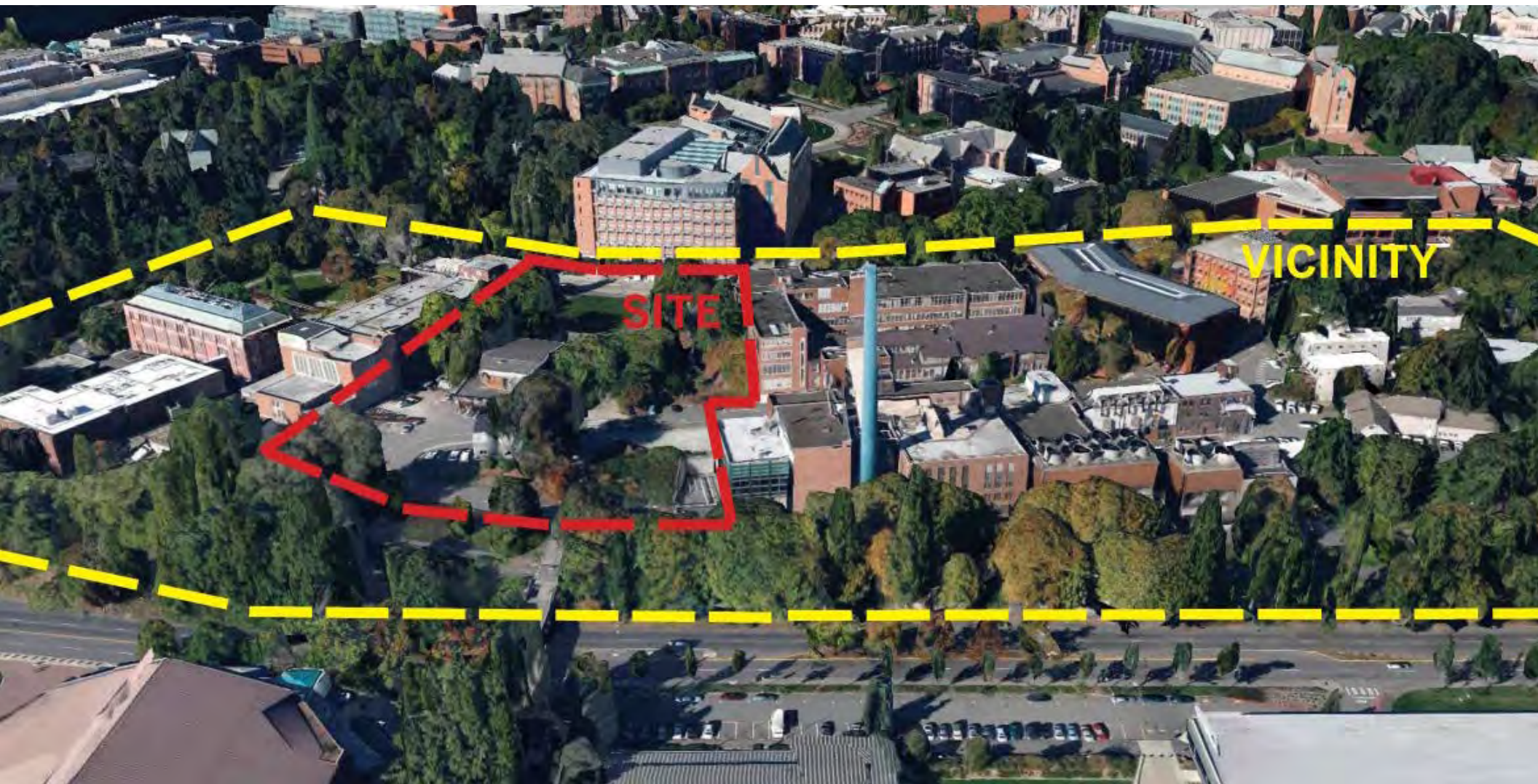












**SITE**

**VICINITY**



# Campus Landscape Framework



Landscape Mosaic



Existing Circulation - Radial Axes



Circulation Mosaic



Existing Circulation - Concentric Edges





# NEW HYBRID LANDSCAPE TYPE

UNIVERSITY OF WASHINGTON COMPUTER SCIENCE AND ENGINEERING II

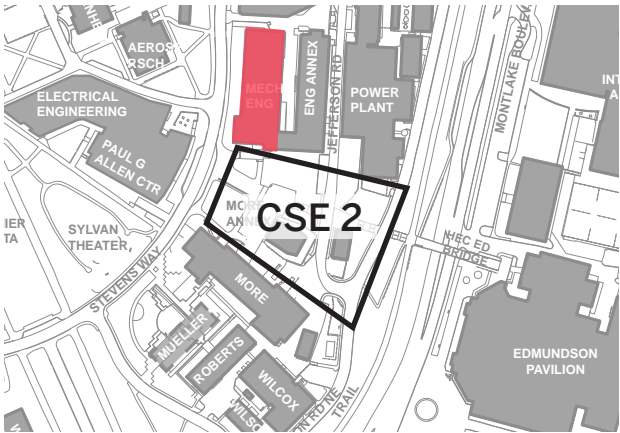






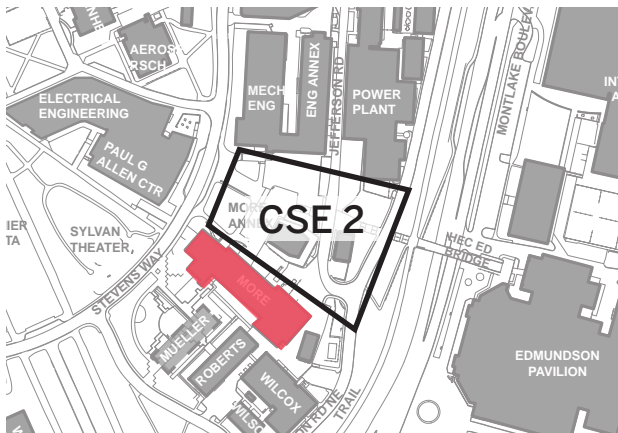


# Mechanical Engineering



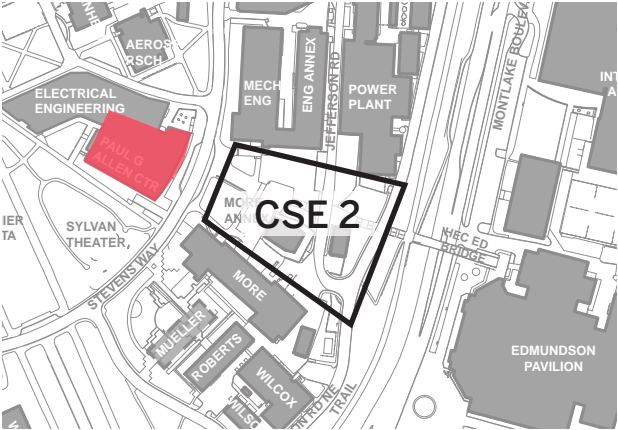


# More Hall



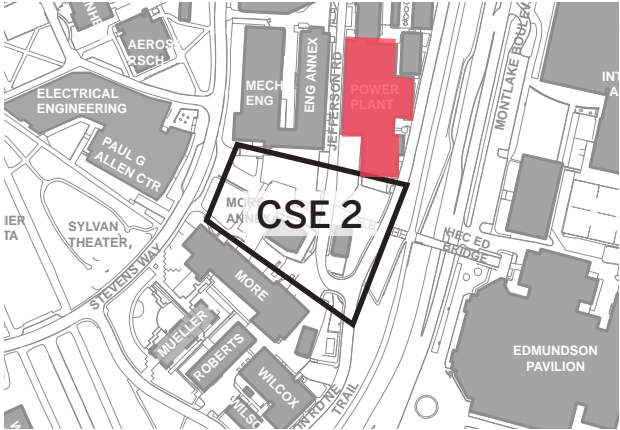


# Paul G. Allen Center

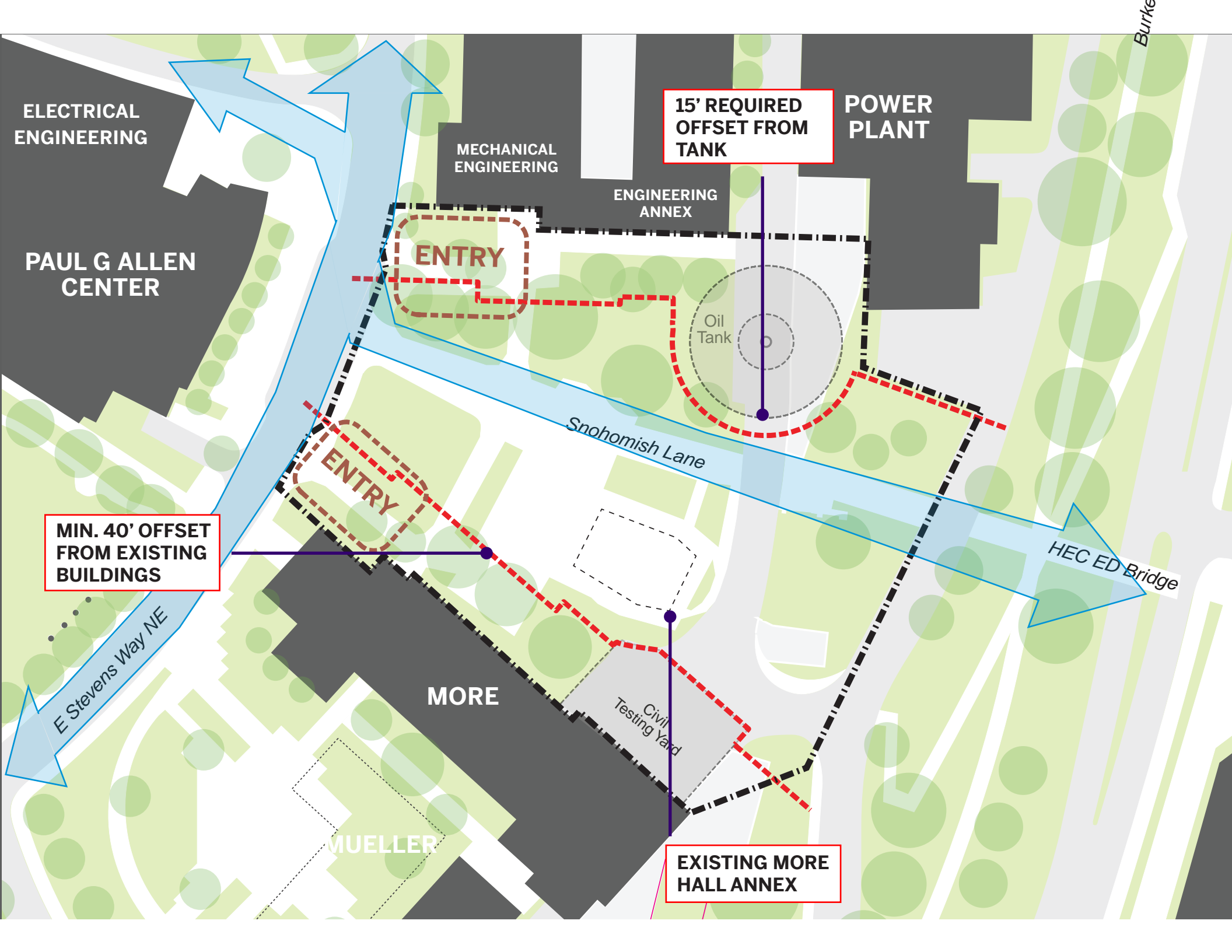




# Power Plant







Burke

ELECTRICAL ENGINEERING

MECHANICAL ENGINEERING

15' REQUIRED OFFSET FROM TANK

POWER PLANT

ENGINEERING ANNEX

PAUL G ALLEN CENTER

ENTRY

Oil Tank

Snohomish Lane

HEC ED Bridge

MIN. 40' OFFSET FROM EXISTING BUILDINGS

ENTRY

E Stevens Way NE

MORE

Civil Testing Yard

EXISTING MORE HALL ANNEX

MUELLER

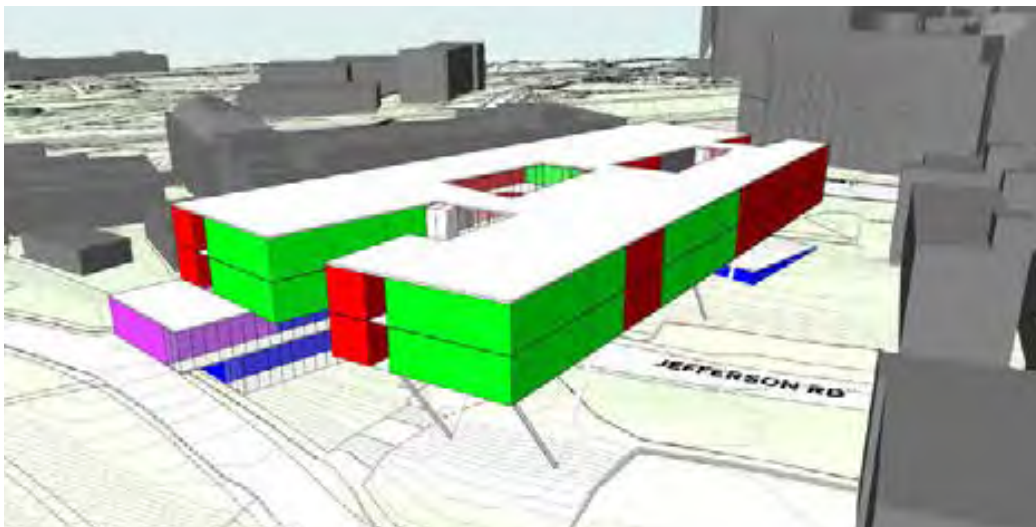


# Concept Design





Scheme C Site Plan



Scheme C Perspective View



LEVEL 3



LEVEL 2



LEVEL 1



BASEMENT







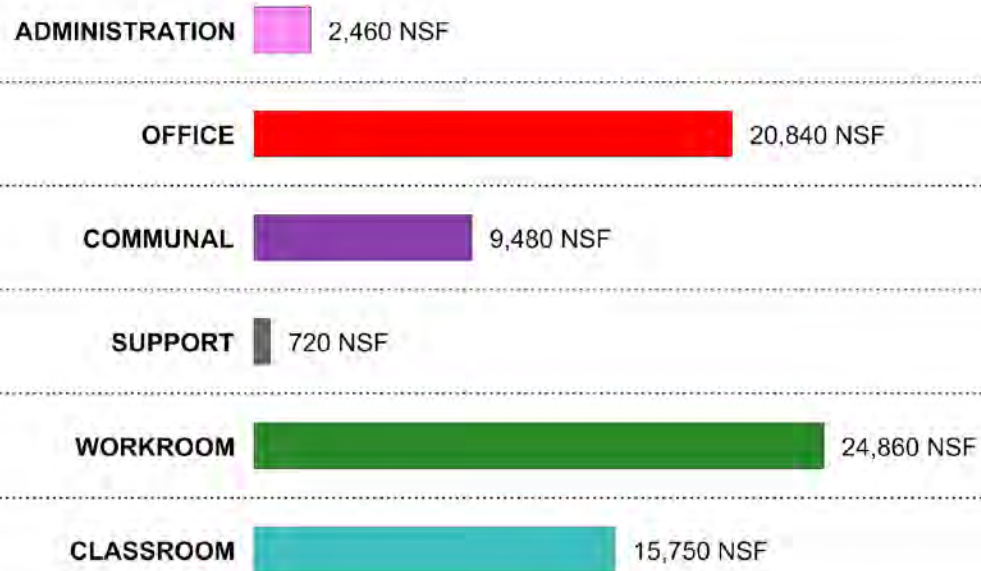




# Schematic Design

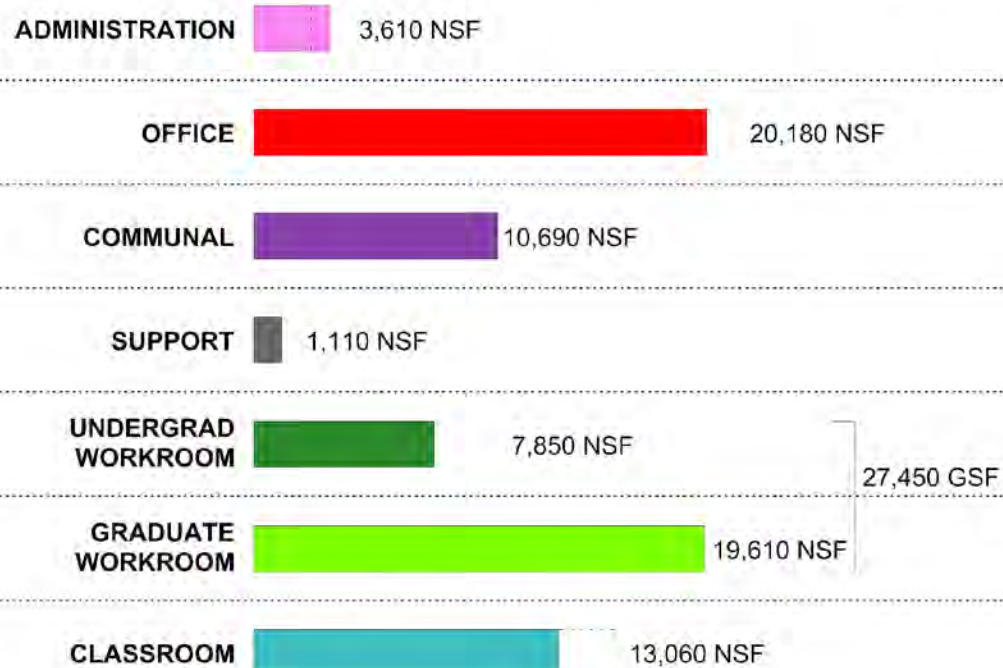


# FEASIBILITY STUDY PROGRAM 130,000 GSF

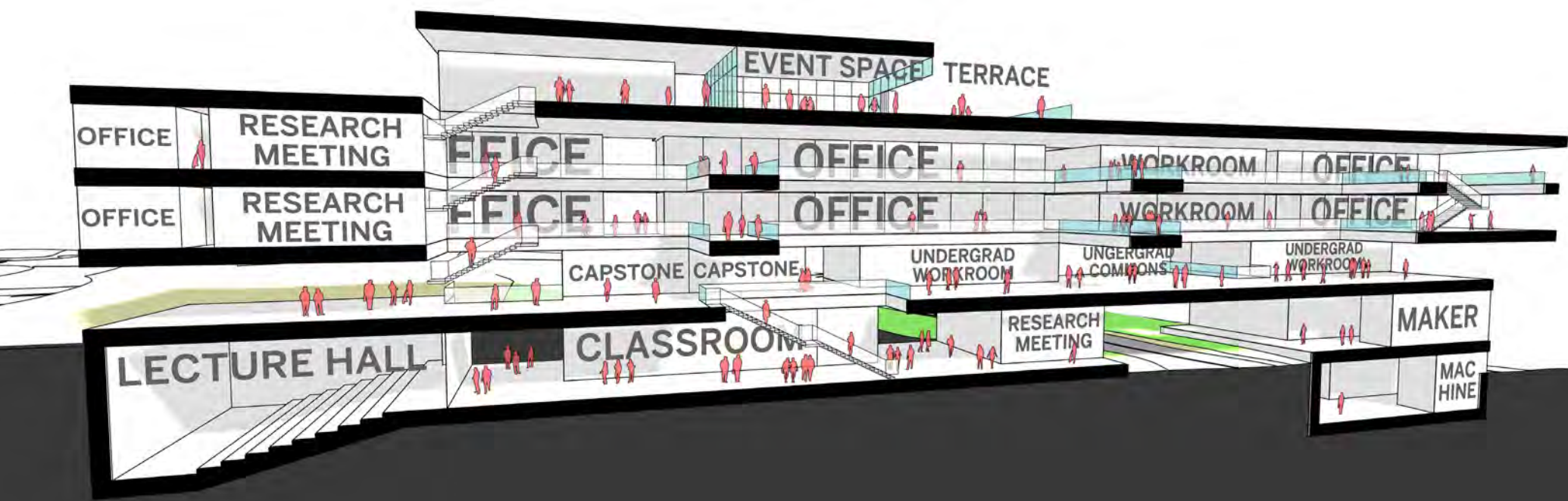
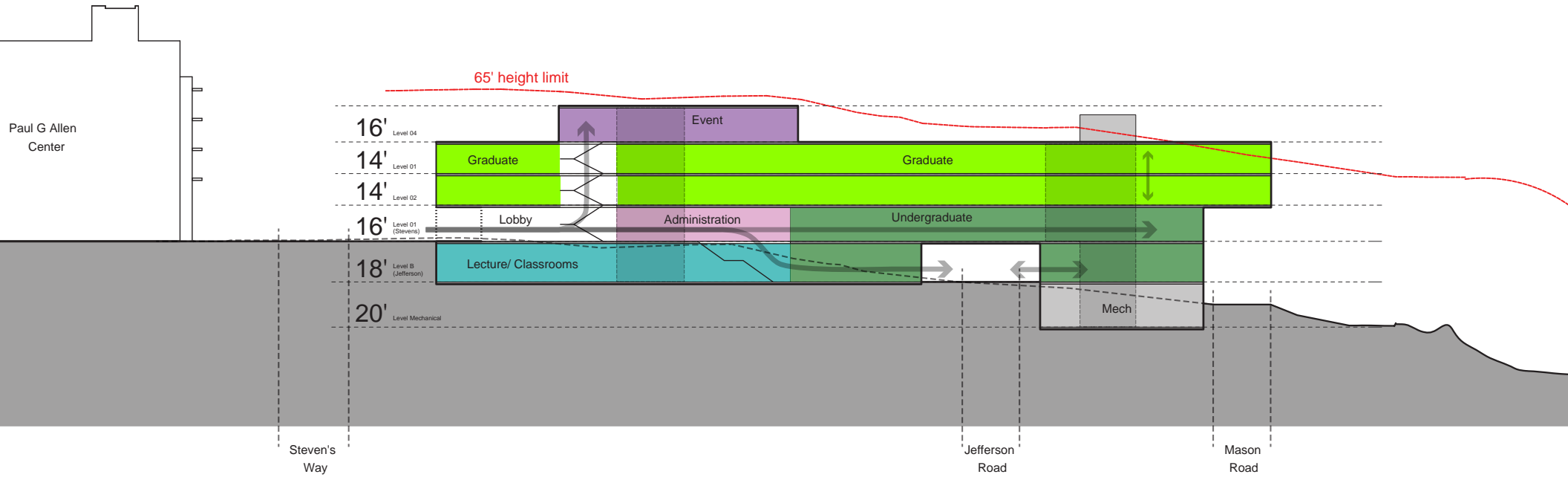


---

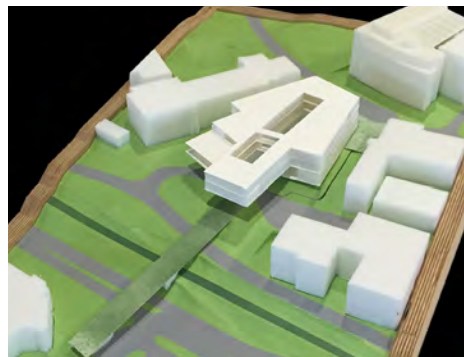
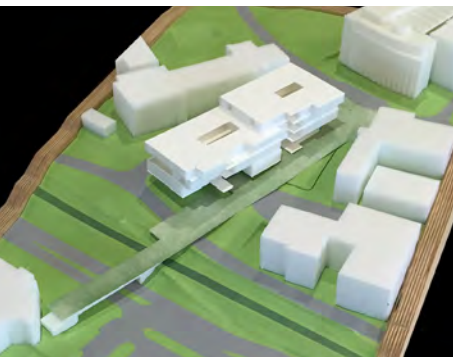
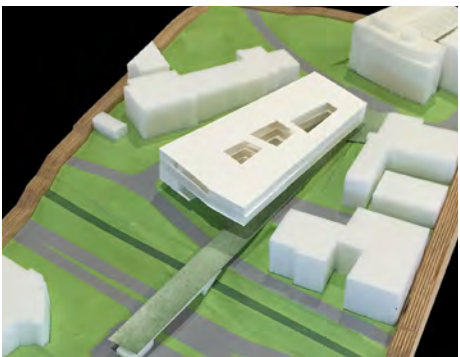
# UPDATED PROGRAM 134,710 GSF















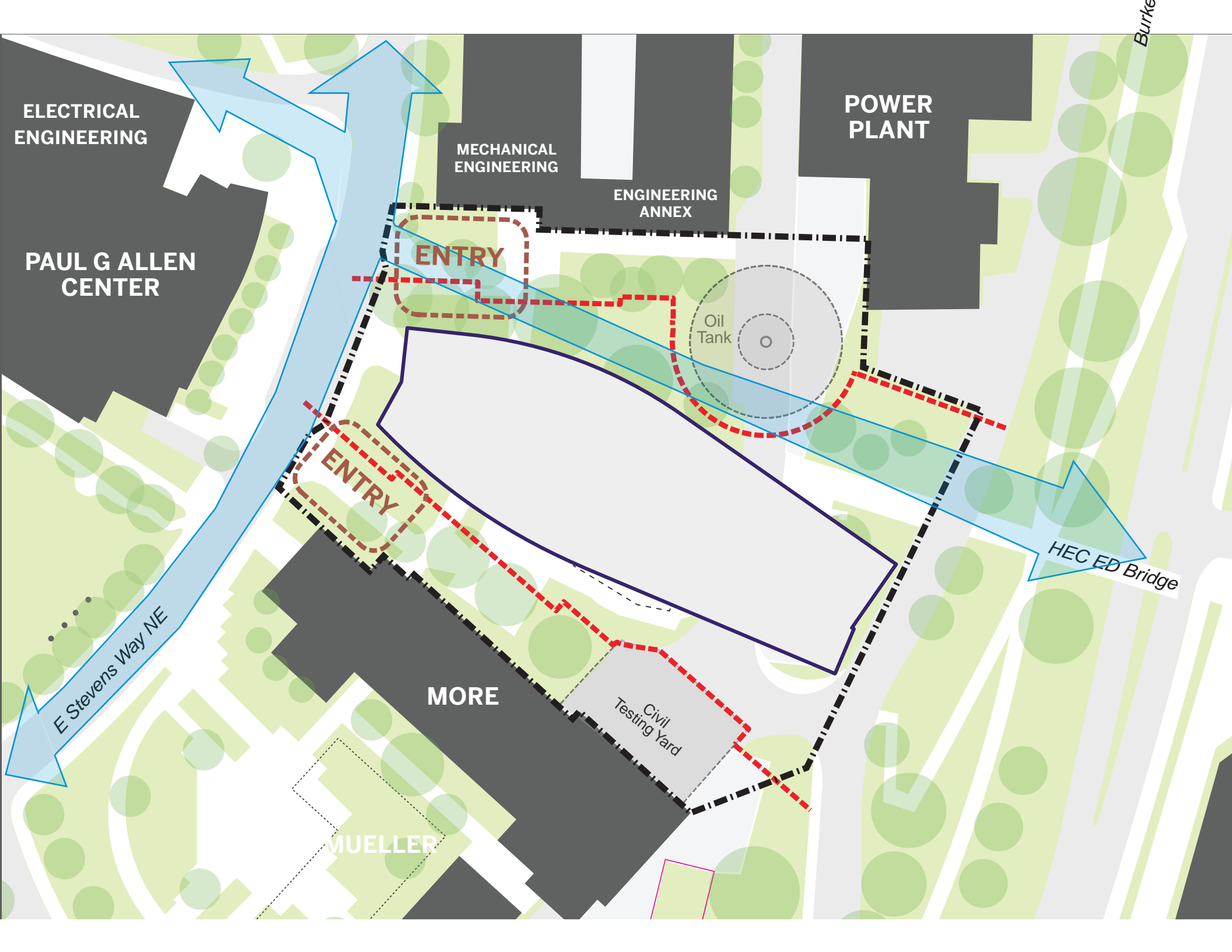




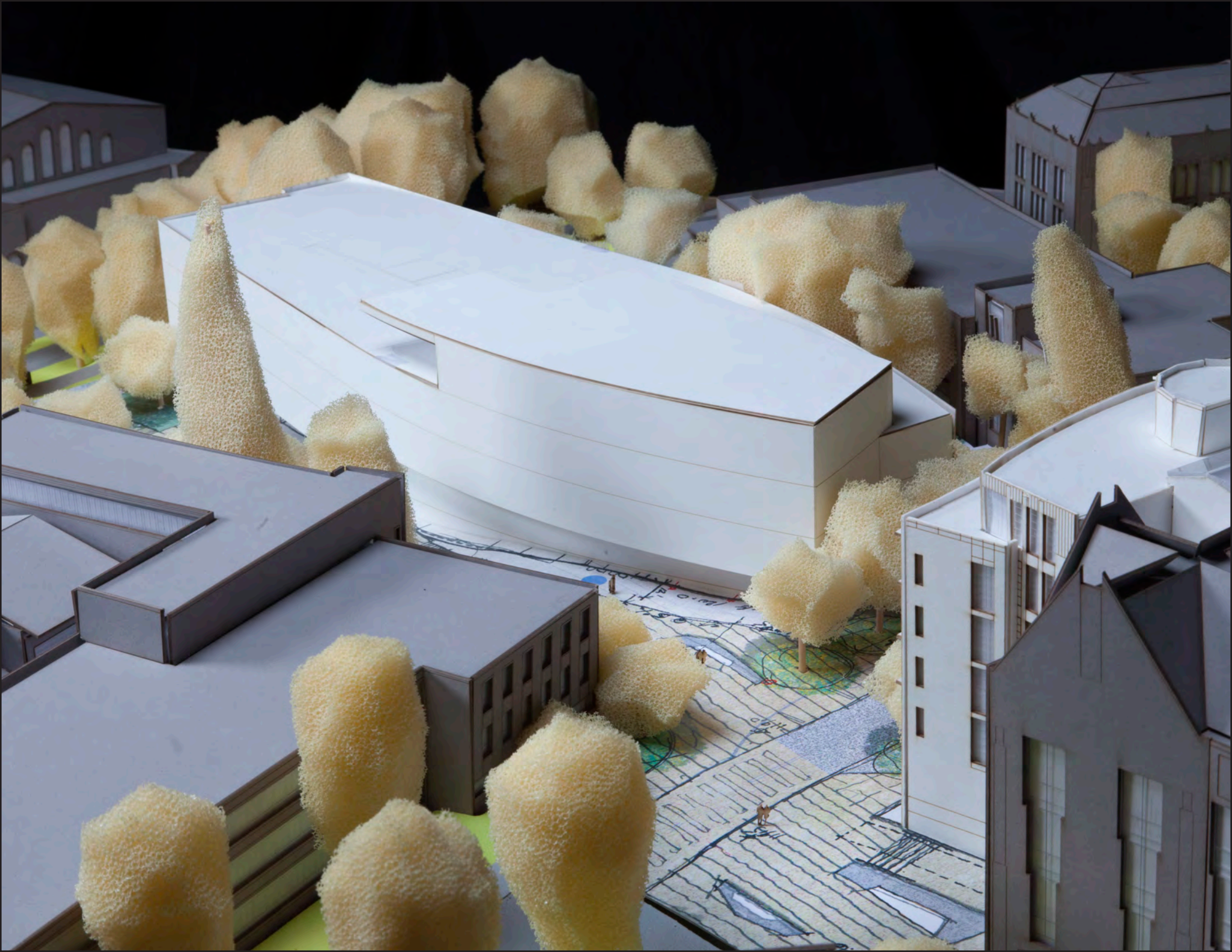




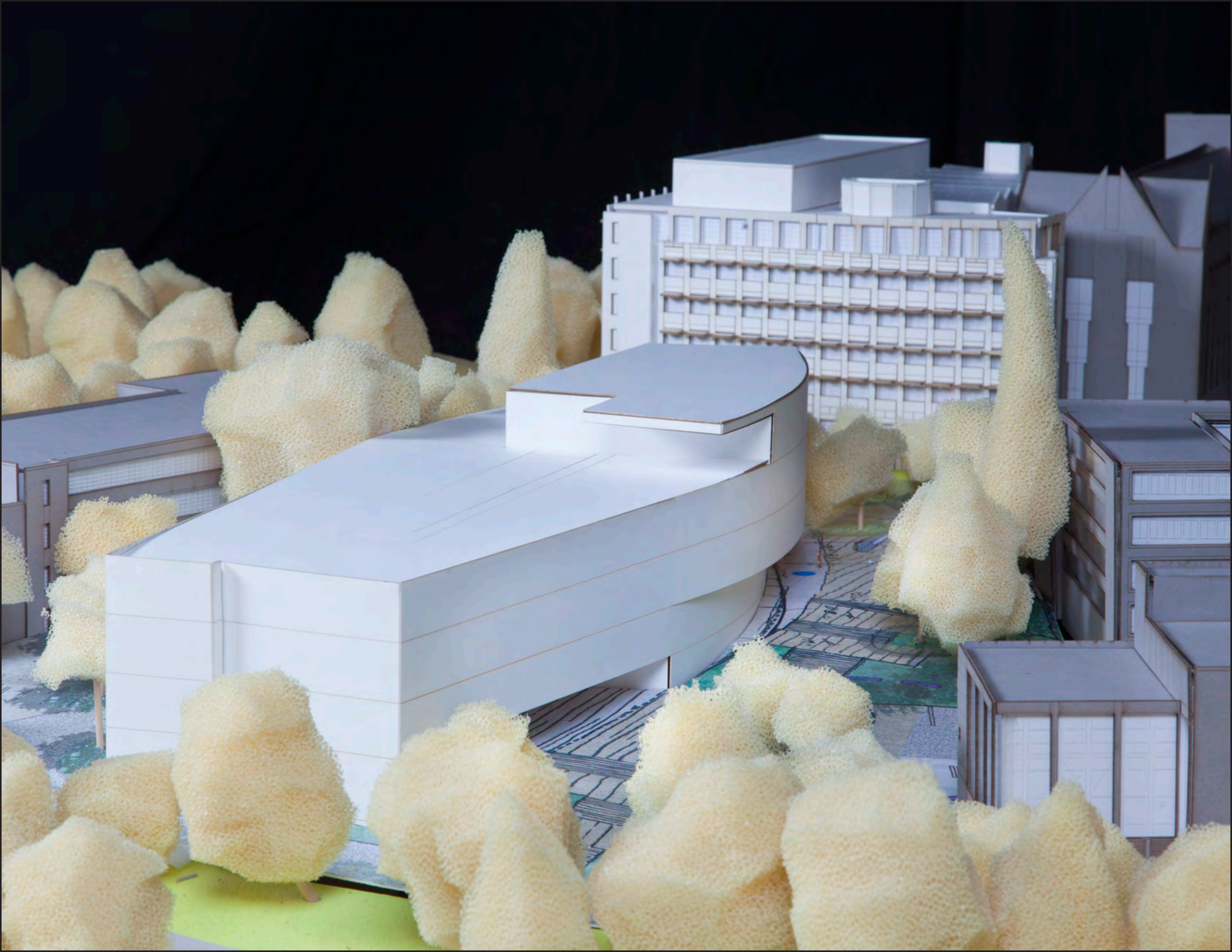








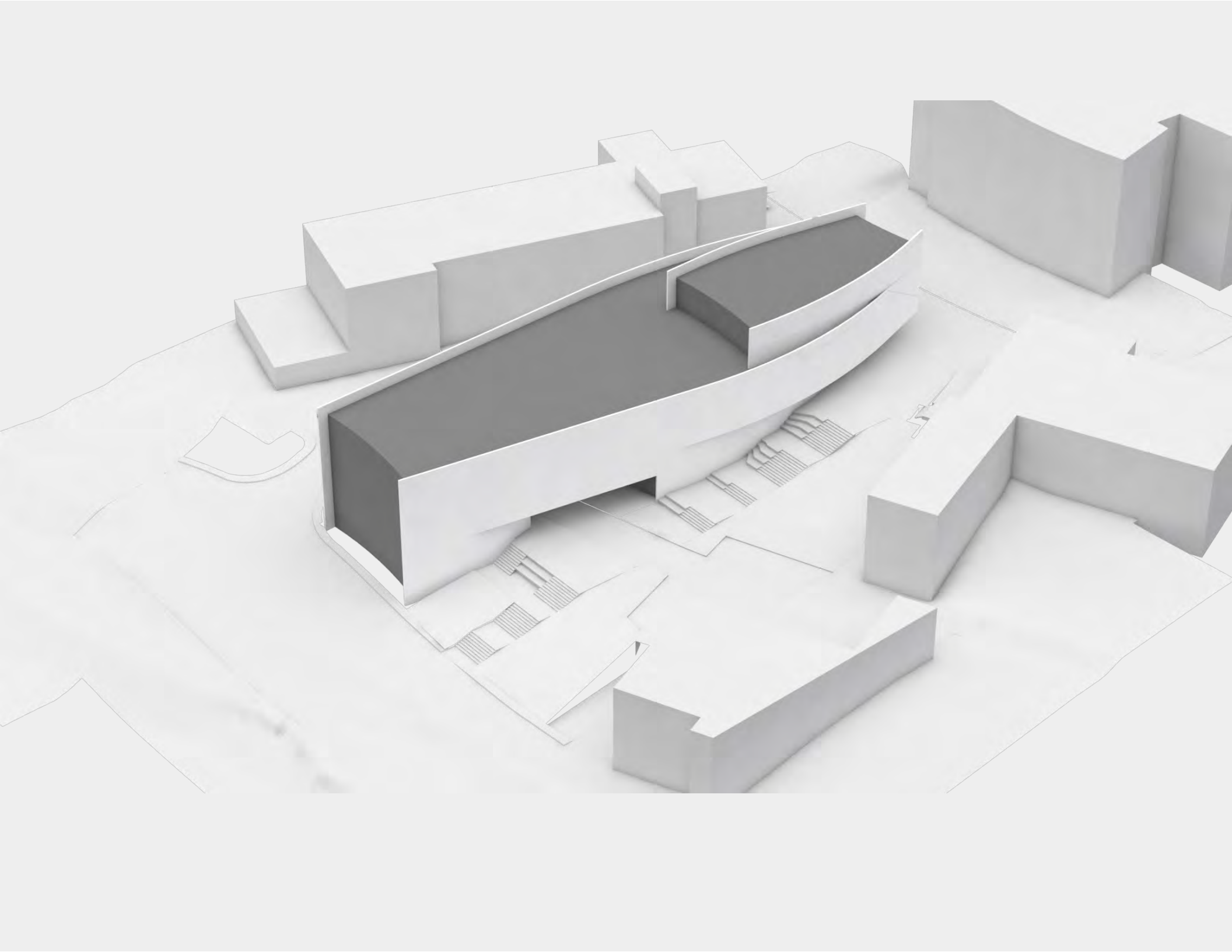




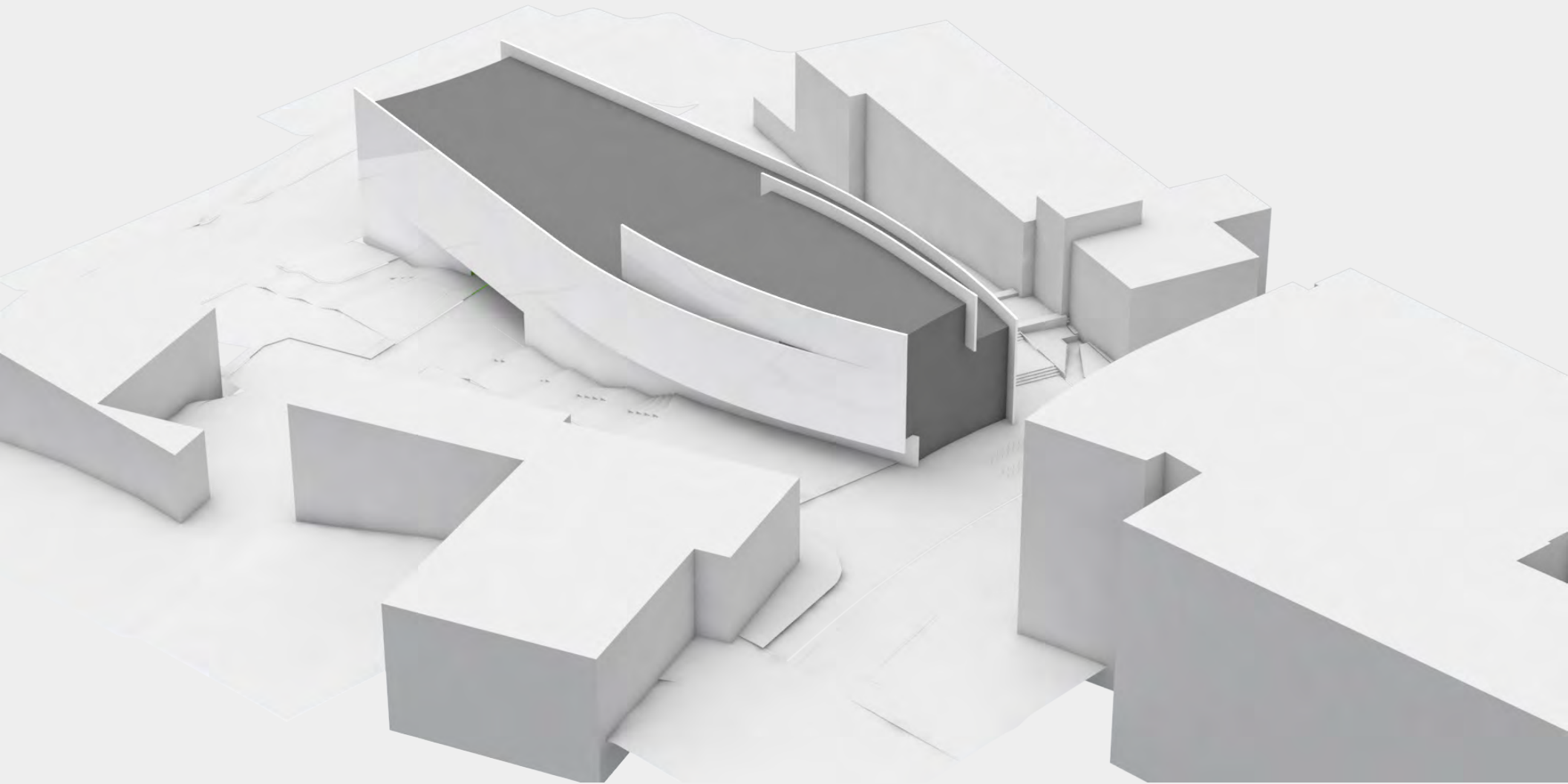














# Allen Center

# Stevens Way

# CSE 2



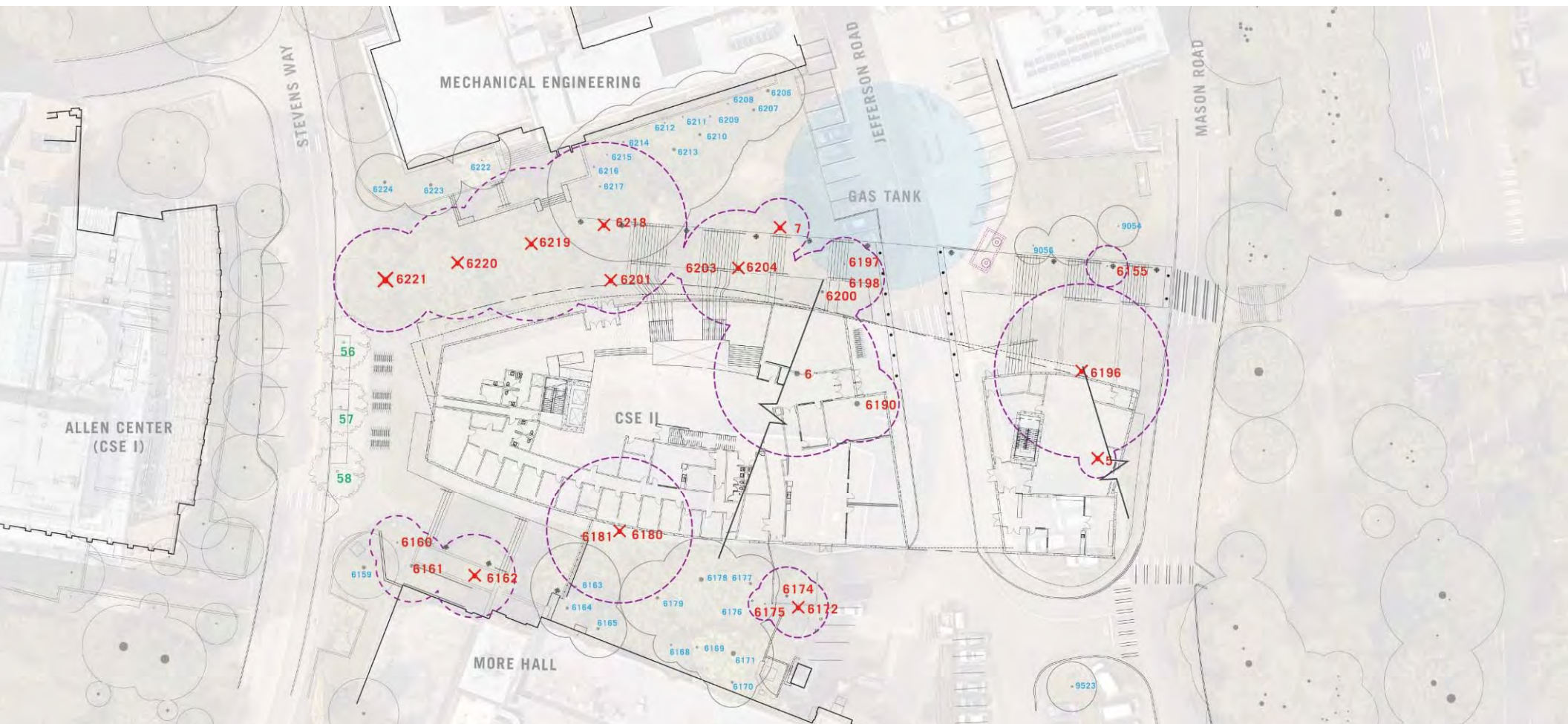






# Site and Landscape Design





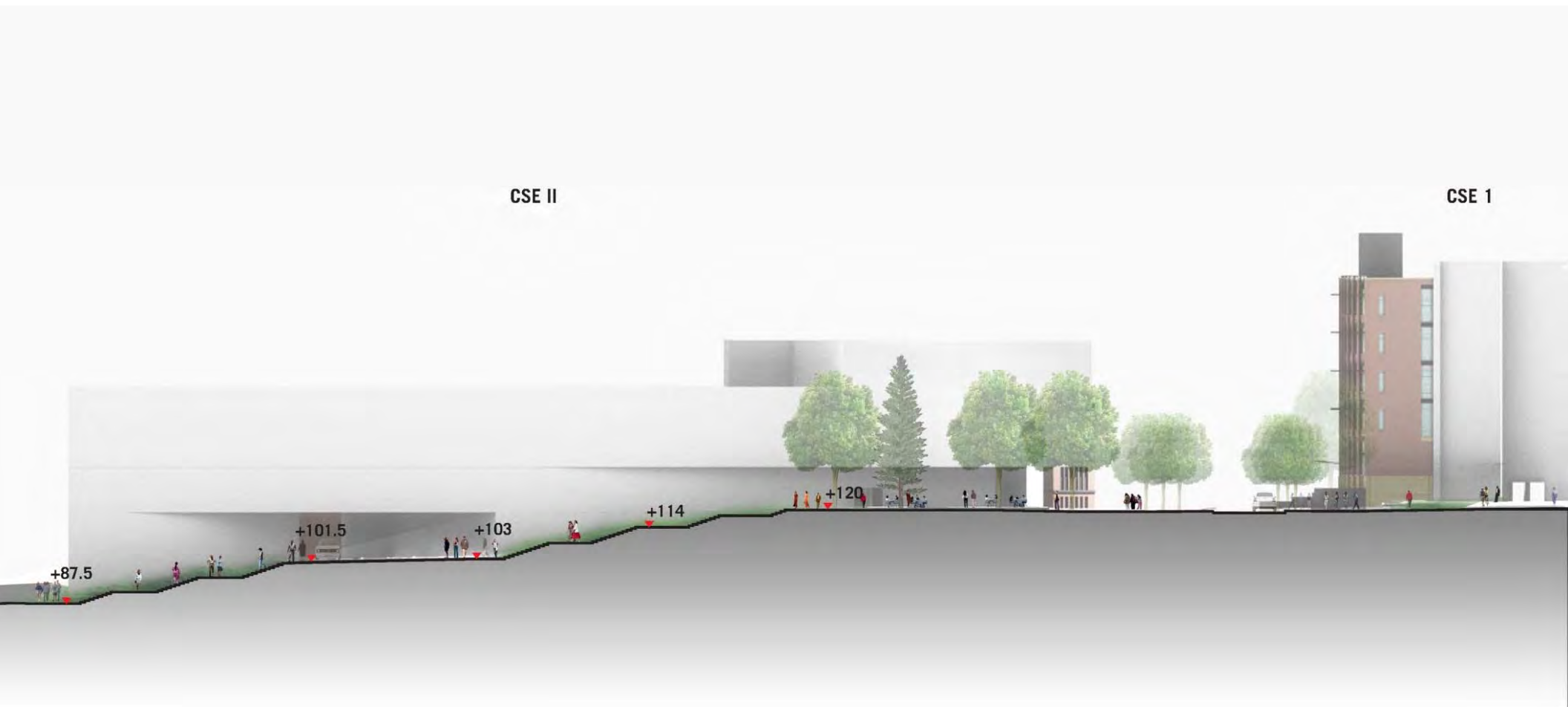
TREE ID	6221	6218	6201	6203	6204	7	6197	6198	6200	6	6190	9055	6196	5	6181	6180	6163	6175	6174	6172	
SCIENTIFIC NAME	<i>Quercus palustris</i>	<i>Quercus palustris</i>	<i>Chamaecyparis lawsoniana</i>	Shrub	<i>Quercus palustris</i>	<i>Arbutus unedo</i>	<i>Acer palmatum</i>	<i>Acer palmatum</i>	<i>Quercus palustris</i>	<i>Quercus palustris</i>	Shrub	<i>Crataegus sp.</i>	<i>Ulmus procera</i>	<i>Arbutus menziesii</i>	<i>Acer palmatum</i>	<i>Quercus palustris</i>	<i>Acer palmatum</i>	<i>Betula pendula</i>	<i>Betula pendula</i>	<i>Betula pendula</i>	
COMMON NAME	Pin oak	Pin oak	Lawson cypress		Pin oak	Strawberry tree	Japanese maple	Japanese maple	Pin oak	Pin oak		Flowering hawthorn	English Elm	Madrone	Japanese maple	Pin oak	Japanese maple	Japanese maple	European birch	European birch	European birch
DSH (INCHES)	20.6	27.9	20.9		21.2	13.9	6.4	11	11.9	24		4.1	46.7	8.5	8.7	25.1	15.4		11	12.8	
EXCEPTIONAL TREES TO REMOVE	Yes	Yes	Yes	Yes	Yes	No	Yes	No	Yes	Yes	Yes	Yes	Yes	Yes	No	Yes	Yes	No	No	Yes	
TREE ID	6220	6219	6224	6223	6222	6217	6216	6215	6214	6212	6211	6213	6210	6209	6208	6207	6206	9056	NO TAG	9054	
SCIENTIFIC NAME	<i>Quercus palustris</i>	<i>Quercus palustris</i>	<i>Prunus serrulata</i>	<i>Prunus serrulata</i>	<i>Cornus kousa</i>	<i>Acer palmatum</i>	<i>Acer palmatum</i>	<i>Acer palmatum</i>	<i>Acer palmatum</i>	<i>Acer palmatum</i>	<i>Acer palmatum</i>	<i>Cedrus deodora</i>	<i>Acer palmatum</i>	<i>Acer palmatum</i>	<i>Acer palmatum</i>	<i>Acer palmatum</i>	<i>Acer palmatum</i>	<i>Crataegus sp.</i>	No tag	<i>Crataegus sp.</i>	
COMMON NAME	Pin oak	Pin oak	Flowering cherry	Flowering cherry	Kousa dogwood	Japanese maple	Japanese maple	Japanese maple	Japanese maple	Japanese maple	Japanese maple	Cedar cedar	Japanese maple	Japanese maple	Japanese maple	Japanese maple	Japanese maple	Flowering hawthorn		Flowering hawthorn	
DSH (INCHES)	22.3	23.4	12.2	10	9	12.4	10.7	8.5	13.3	5.4	7.6	34.5	14.8	10.8	9.3	9.5	16.1		3.8	4.5	
EXCEPTIONAL TREES TO REMOVE	Yes	Yes	No	No	No	Yes	No	No	Yes	No	No	Yes	Yes	Yes	No	No	Yes	No		No	
TREE ID	6159	6160	6161	6162	6164	6165	6179	6178	6177	6176	6168	6169	6171	6170	9523	57	58	59			
SCIENTIFIC NAME	<i>Prunus serrulata</i>	<i>Prunus serrulata</i>	<i>Chamaecyparis lawsoniana</i>	<i>Acer palmatum</i>	<i>Chamaecyparis lawsoniana</i>	<i>Chamaecyparis lawsoniana</i>	<i>Quercus palustris</i>	<i>Quercus palustris</i>	<i>Betula pendula</i>	<i>Betula pendula</i>	<i>Chamaecyparis lawsoniana</i>	<i>Betula pendula</i>	<i>Quercus palustris</i>	<i>Chamaecyparis lawsoniana</i>	<i>Cedrus deodora</i>	Proposed tree	Proposed tree	Proposed tree			
COMMON NAME	Flowering cherry	Flowering cherry	Lawson cypress	Japanese maple	Lawson cypress	Lawson cypress	Pin oak	Pin oak	European birch	European birch	Lawson cypress	European birch	Pin oak	Deodar cedar							
DSH (INCHES)	14	10	28.9	15.1	17.6	14.2	14.8	20.2	12.7	No	13.3	10.7	22.5	12							
EXCEPTIONAL TREES TO REMOVE	No	No	No	Yes	Yes	Yes	Yes	Yes	Yes	No	Yes	No	Yes	Yes	No						

XX TREE TO BE REMOVED  
XX TREE TO REMAIN  
XX PROPOSED TREES



# TREE REMOVAL PLAN

UNIVERSITY OF WASHINGTON COMPUTER SCIENCE AND ENGINEERING II



SNOHOMISH TO LANDSCAPE BRIDGE



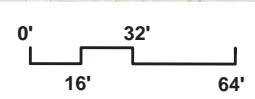
## SITE SECTION

UNIVERSITY OF WASHINGTON COMPUTER SCIENCE AND ENGINEERING II

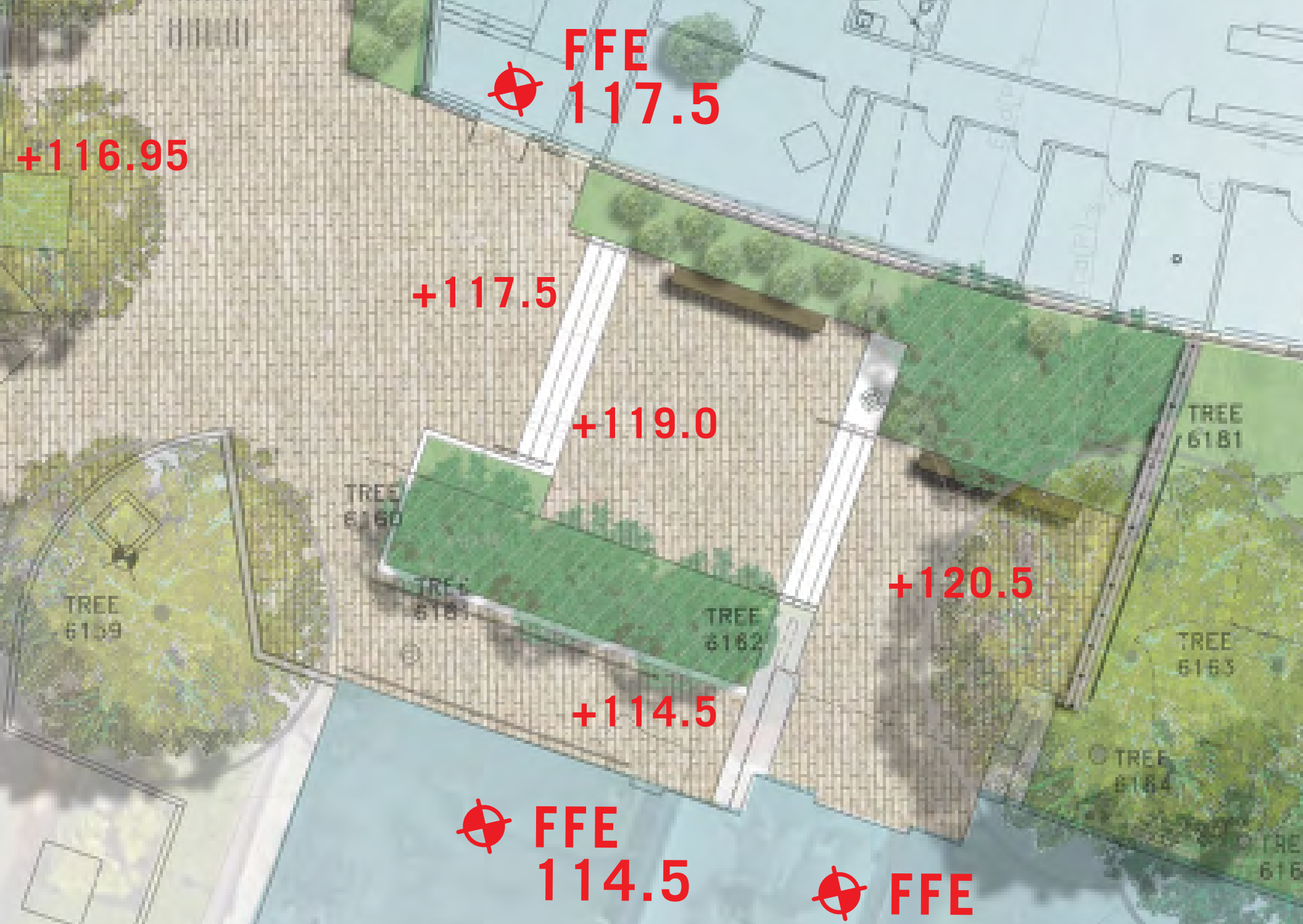




NOTES:  
 FOR TEMPORARY TREE AND PLANT PROTECTION, SEE  
 UTLINE SPECIFICATIONS #01 56 39  
 A NEW AUTOMATIC, HIGH EFFICIENCY IRRIGATION  
 SYSTEM COMPRISED OF BUBBLERS AND DRIP IRRIGATION  
 WITH A PROGRAMMABLE CONTROLLER WITH WEATHER DATA  
 AND RAIN SENSOR WILL BE PROVIDED FOR THE PROJECT.  
 SEE UTLINE SPECIFICATIONS #32 64 00







MORE HALL ENTRY





## MORE HALL ENTRY

UNIVERSITY OF WASHINGTON COMPUTER SCIENCE AND ENGINEERING II

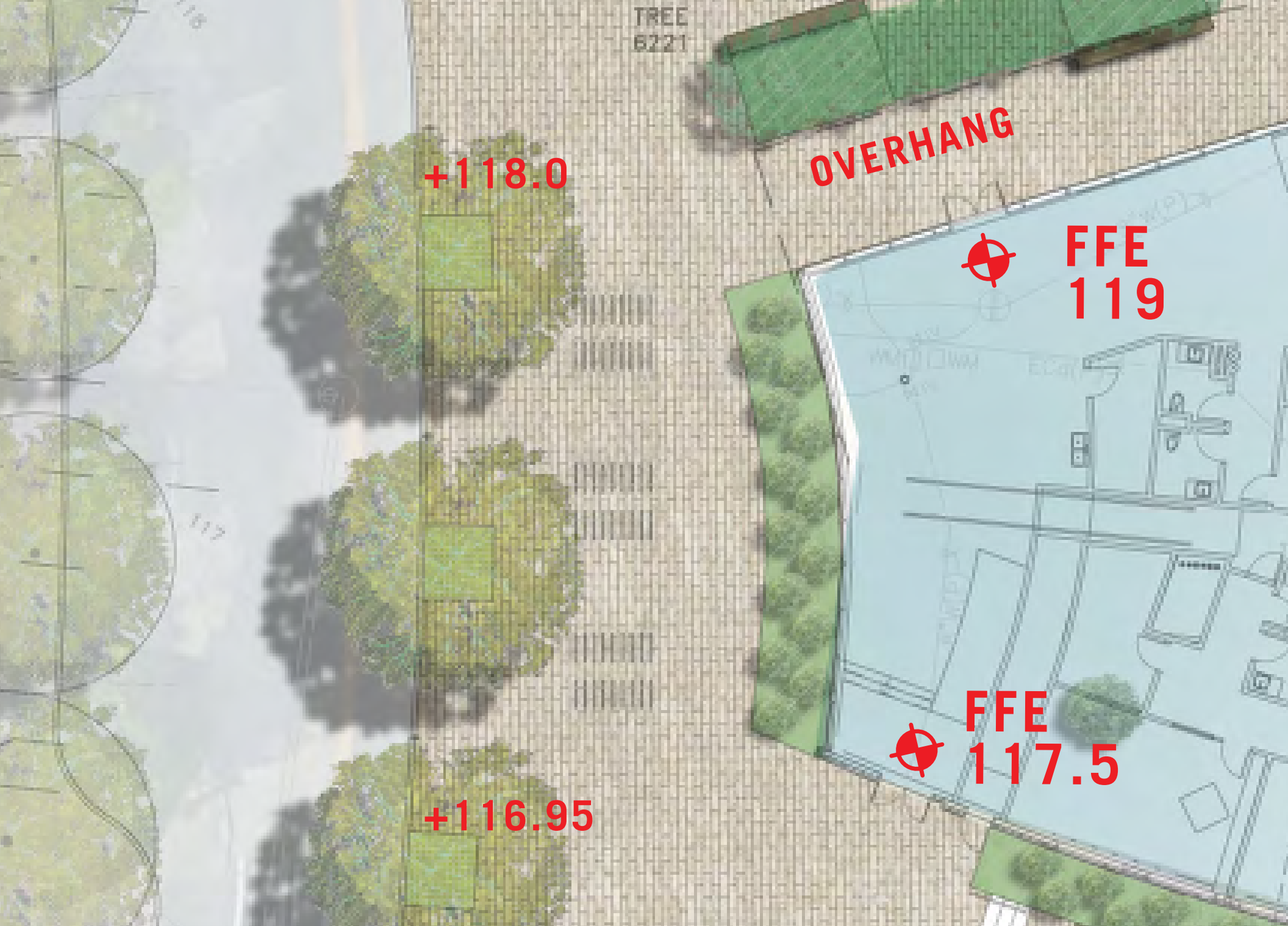




## MORE HALL ENTRY

UNIVERSITY OF WASHINGTON COMPUTER SCIENCE AND ENGINEERING II





TREE  
6221

**OVERHANG**

**+118.0**

**FFE  
119**



**FFE  
117.5**



**+116.95**

STEVENS WAY





## STEVENS WAY PLAZA CONCEPT

UNIVERSITY OF WASHINGTON COMPUTER SCIENCE AND ENGINEERING II

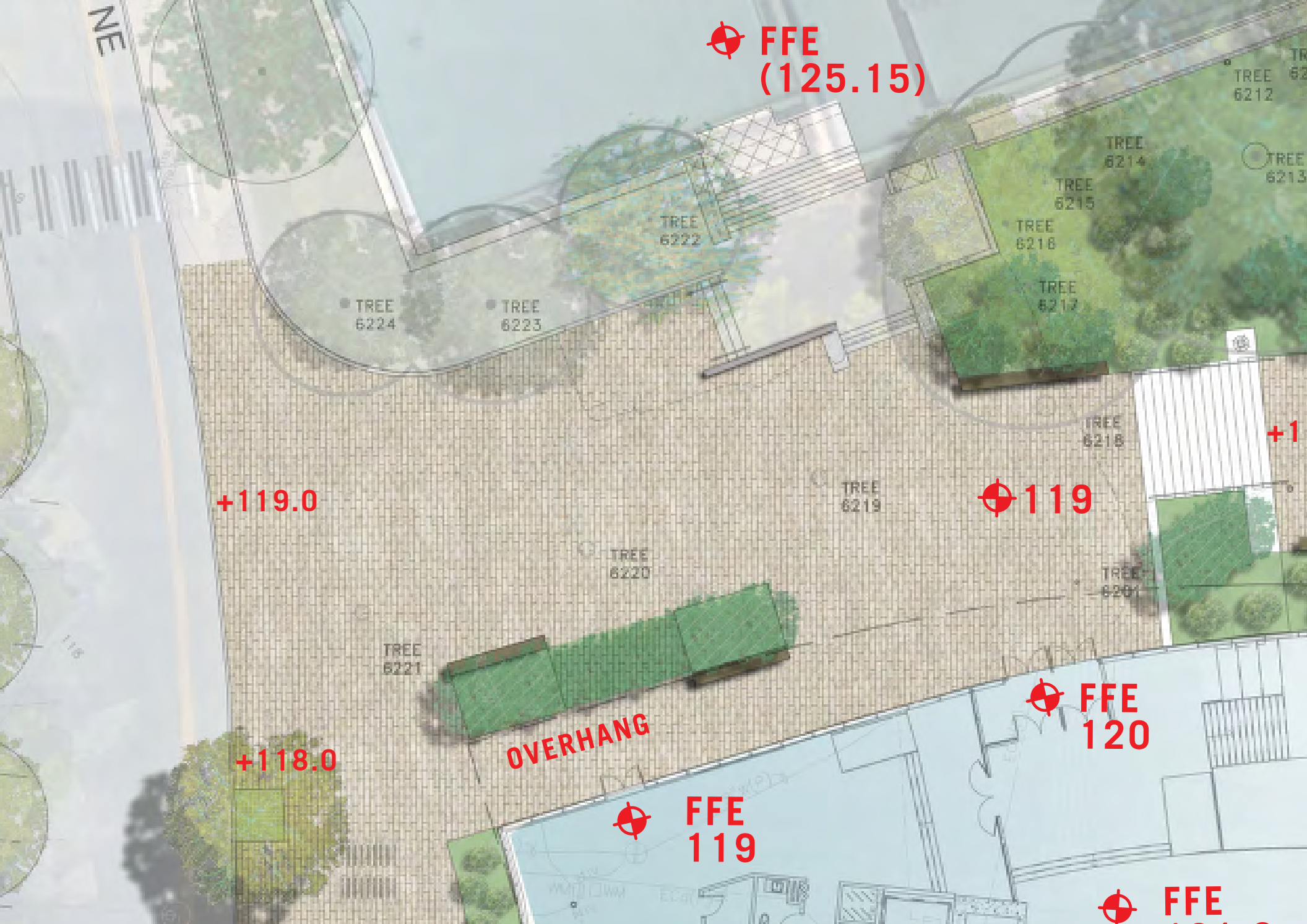




## **MECHANICAL ENGINEERING ENTRY**

UNIVERSITY OF WASHINGTON COMPUTER SCIENCE AND ENGINEERING II





MECHANICAL ENGINEERING ENTRY









**HORTICULTURAL CONCEPT/Maples and Dogwoods**

UNIVERSITY OF WASHINGTON COMPUTER SCIENCE AND ENGINEERING II











# Building Design



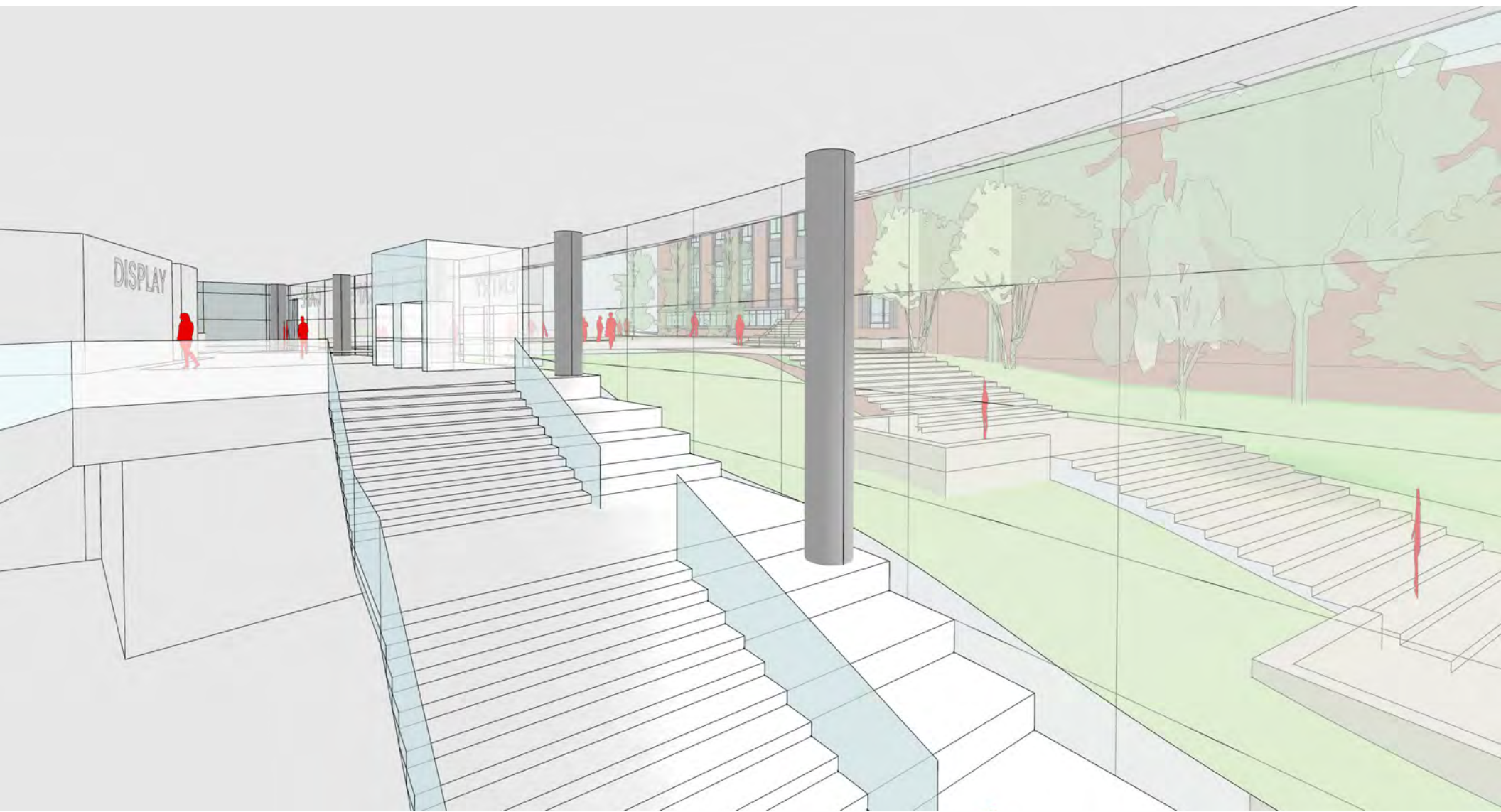


LEVEL 1



GROUND LEVEL







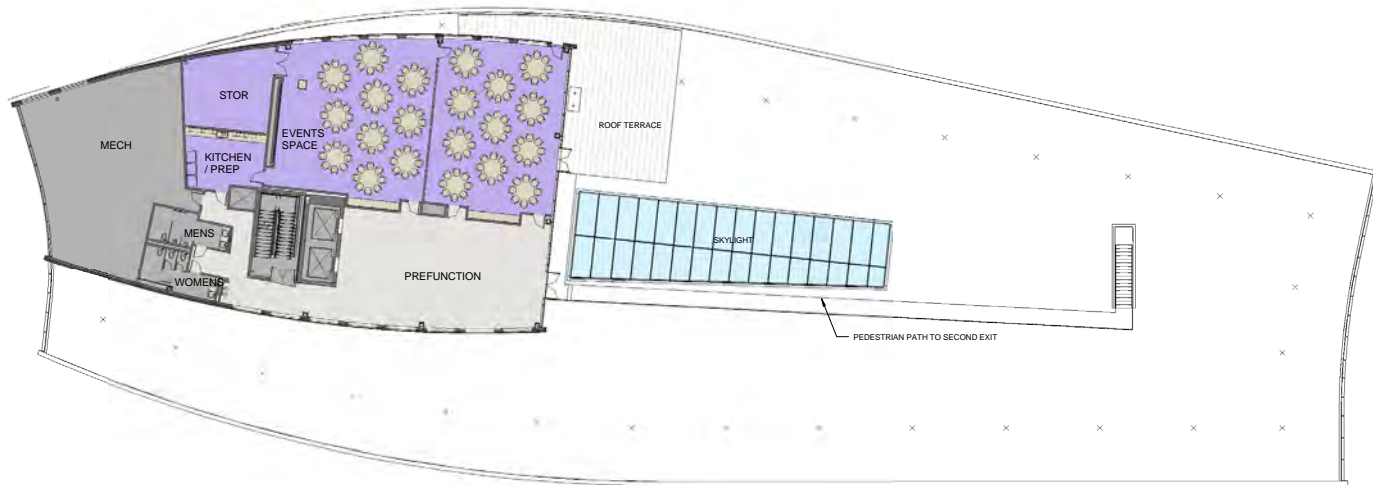


LEVEL 3



LEVEL 2





LEVEL 2





RECEPTION

VIEW FROM LEVEL 1 MAIN ENTRY





VIEW FROM LEVEL 2 CENTRAL SPACE



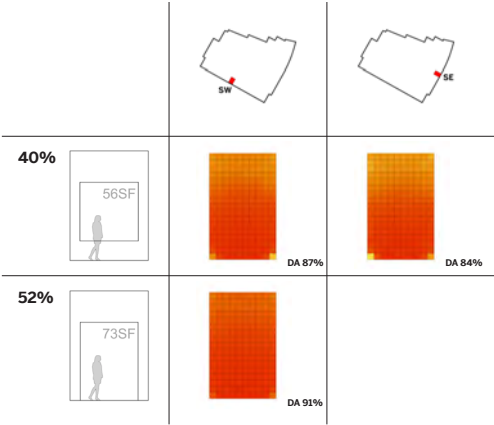


VIEW FROM LEVEL 2 CENTRAL SPACE

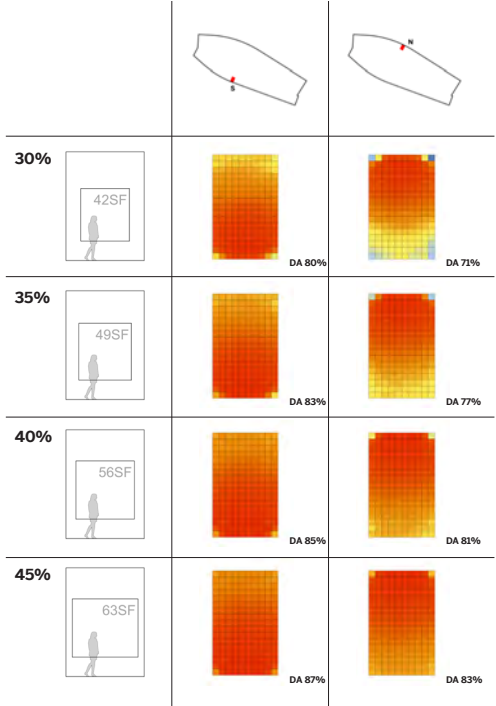


# Daylight Autonomy Study

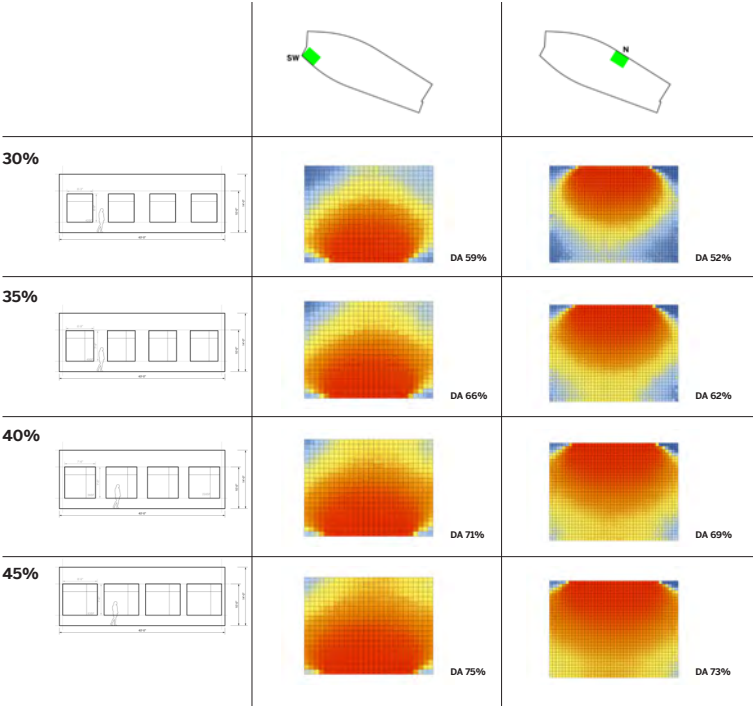
## Allen Center Perimeter Office



## CSE II Perimeter Office

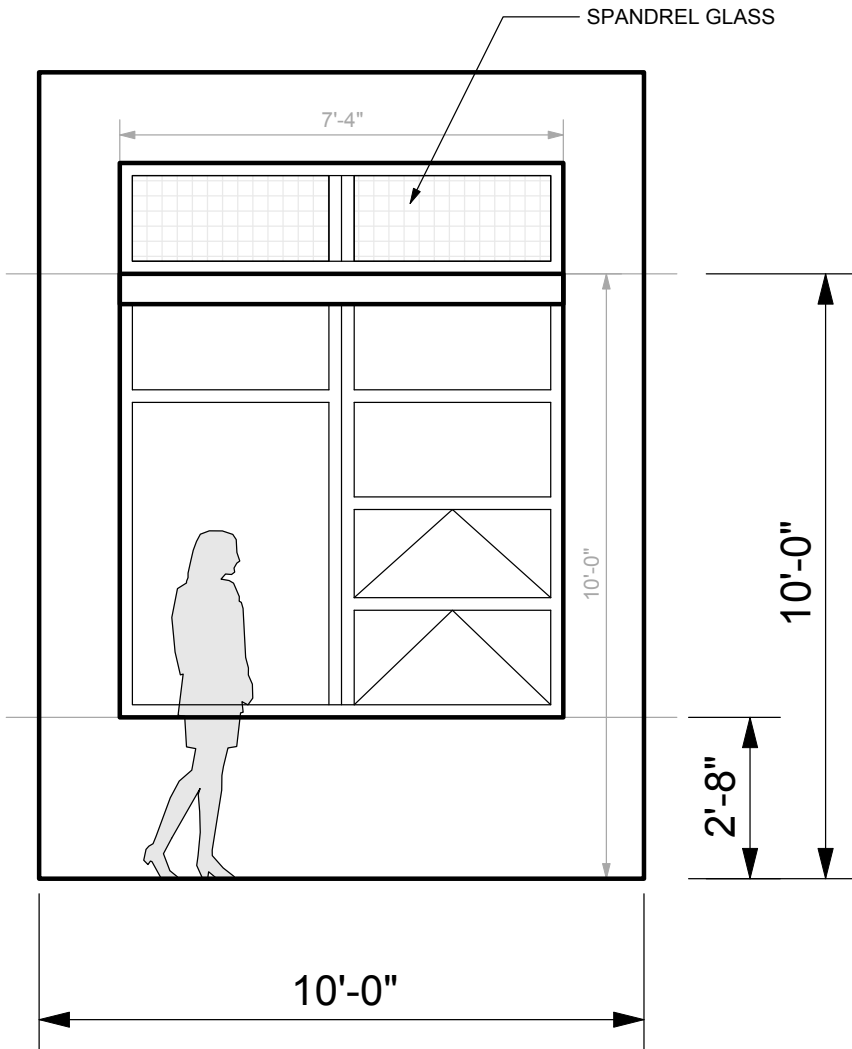


## Perimeter Workroom

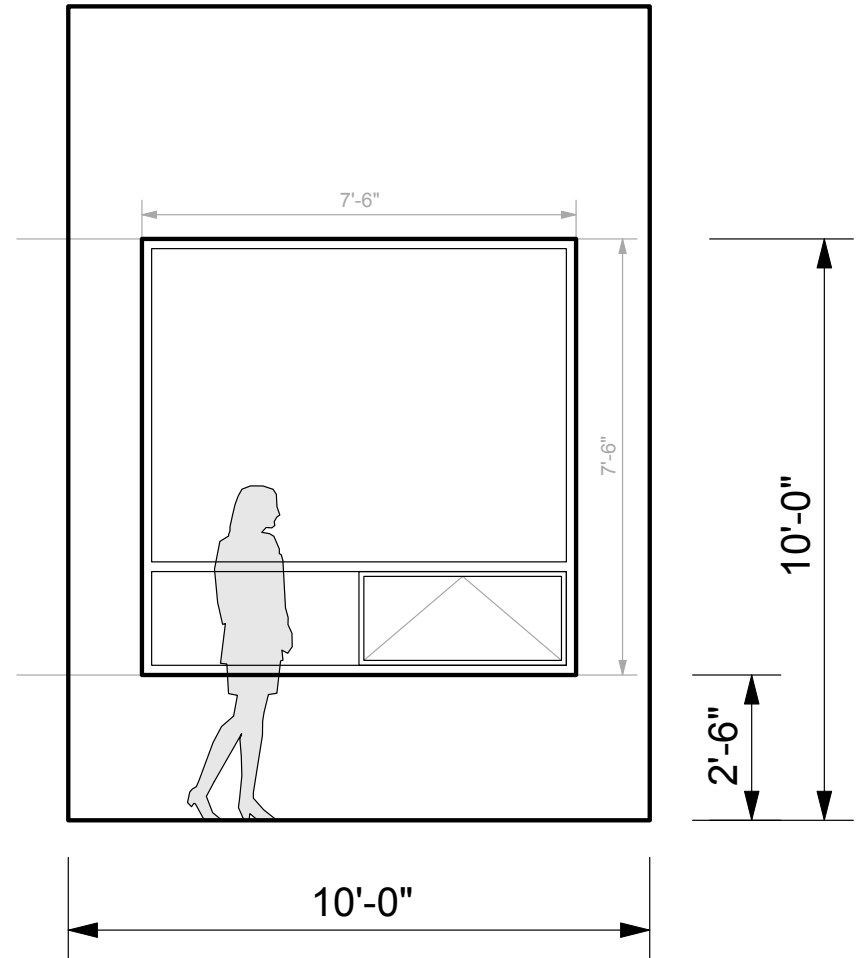


Daylight Autonomy (DA) is the percentage of the time-in-use that appropriate task lighting is reached without the use of electric lighting.





**ALLEN CENTER  
WINDOW MODULE**



**PROPOSED CSE II  
WINDOW MODULE**

















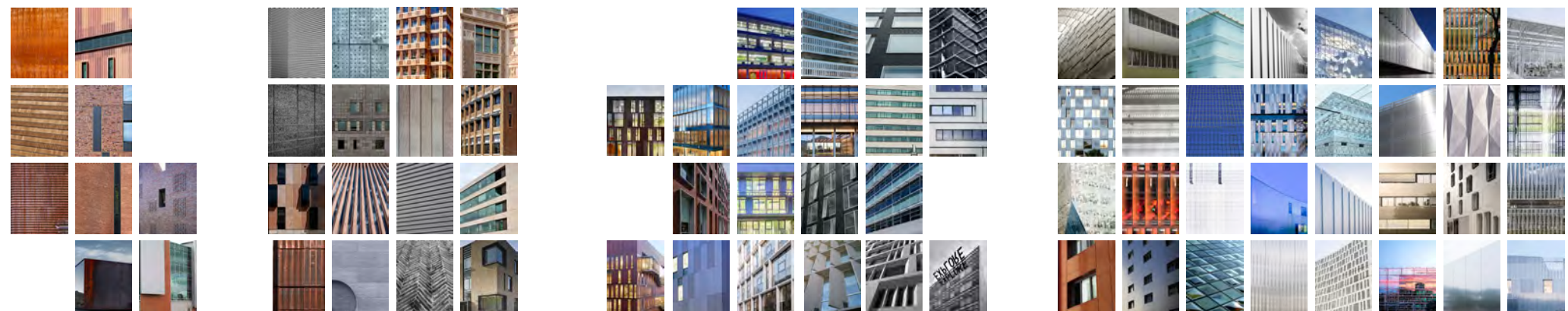












**Massive**



**Light**











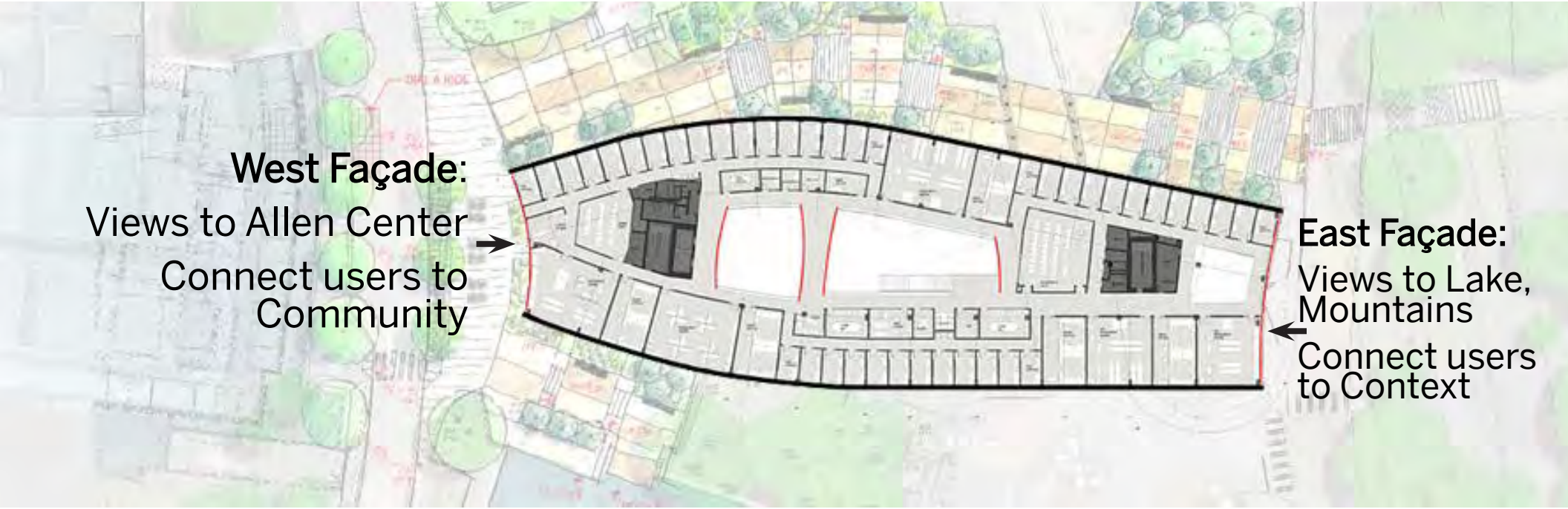


Vertical  
Dense  
Anchored

Horizontal  
Striated  
Hovering

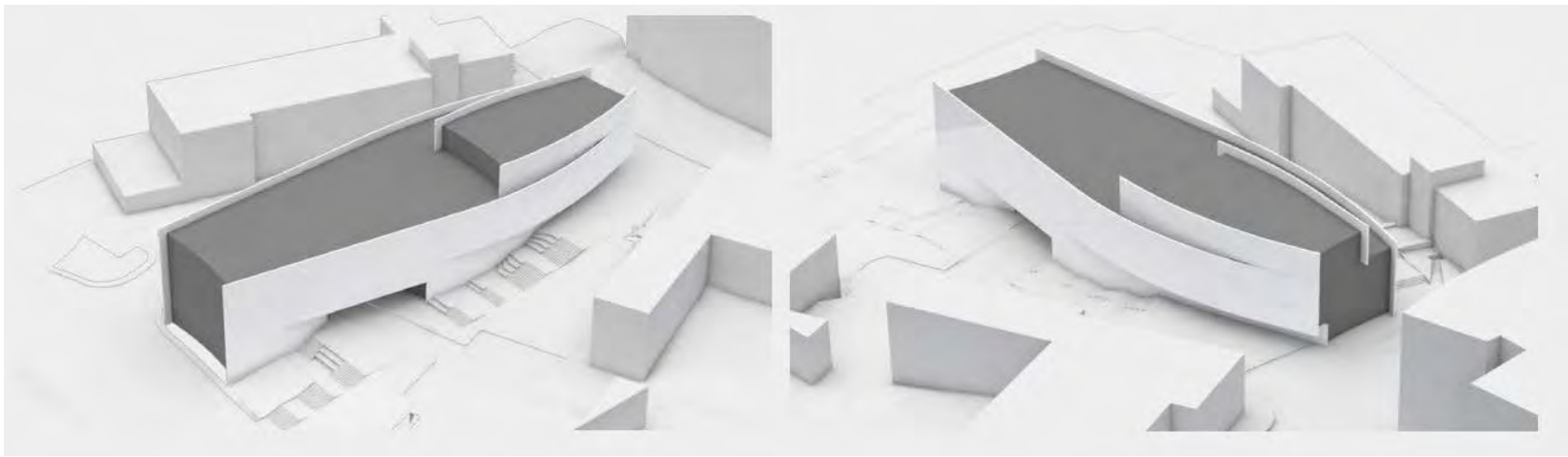






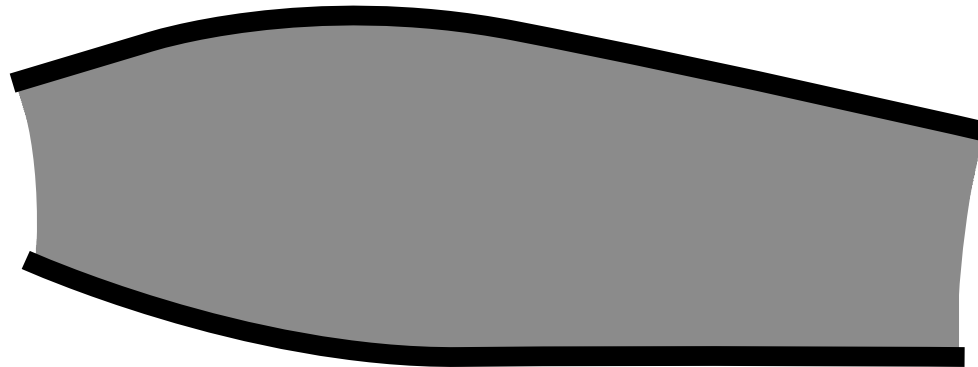
**West Façade:**  
Views to Allen Center  
Connect users to  
Community

**East Façade:**  
Views to Lake,  
Mountains  
Connect users  
to Context





Vertical  
Dense  
Anchored



Slender Form

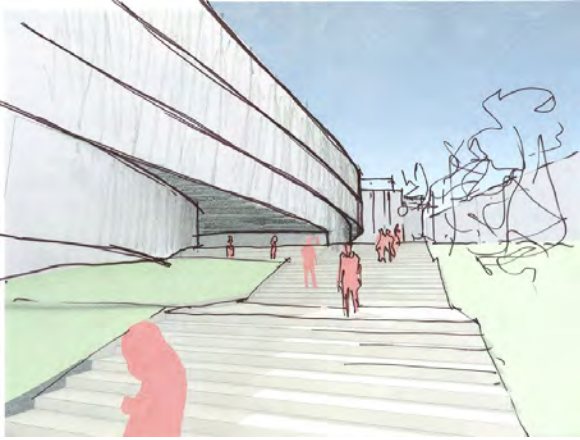
**west**



**east**

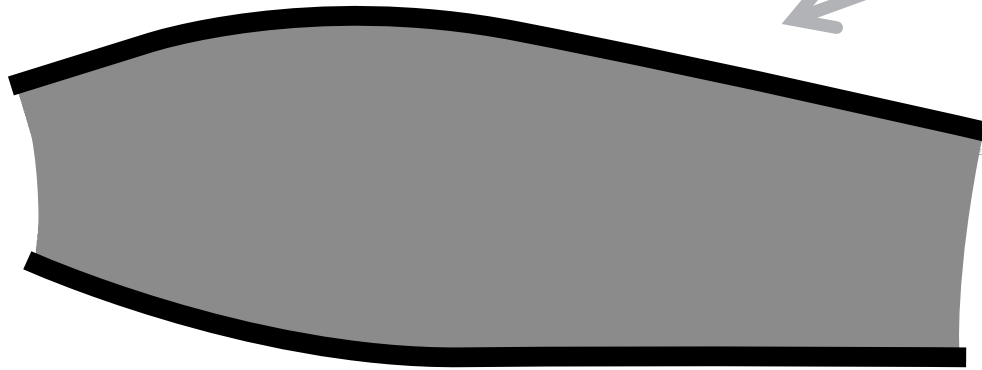
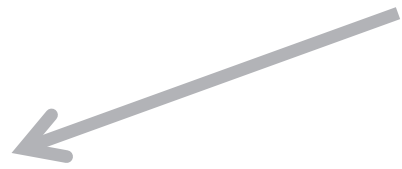






Peeled Form

Horizontal  
Striated  
Hovering



west



east













Inset



Shingled





Inset





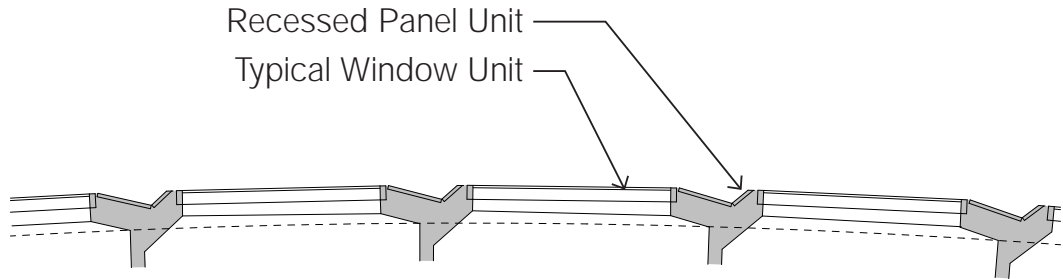
Inset



Typical brushed or painted metal panel

Typical Window Unit

Recessed Panel Unit



Recessed Panel Unit

Typical Window Unit

Wall Assembly Plan View



Inset





Inset



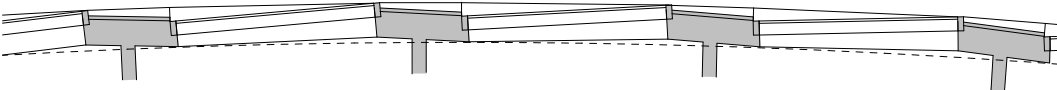
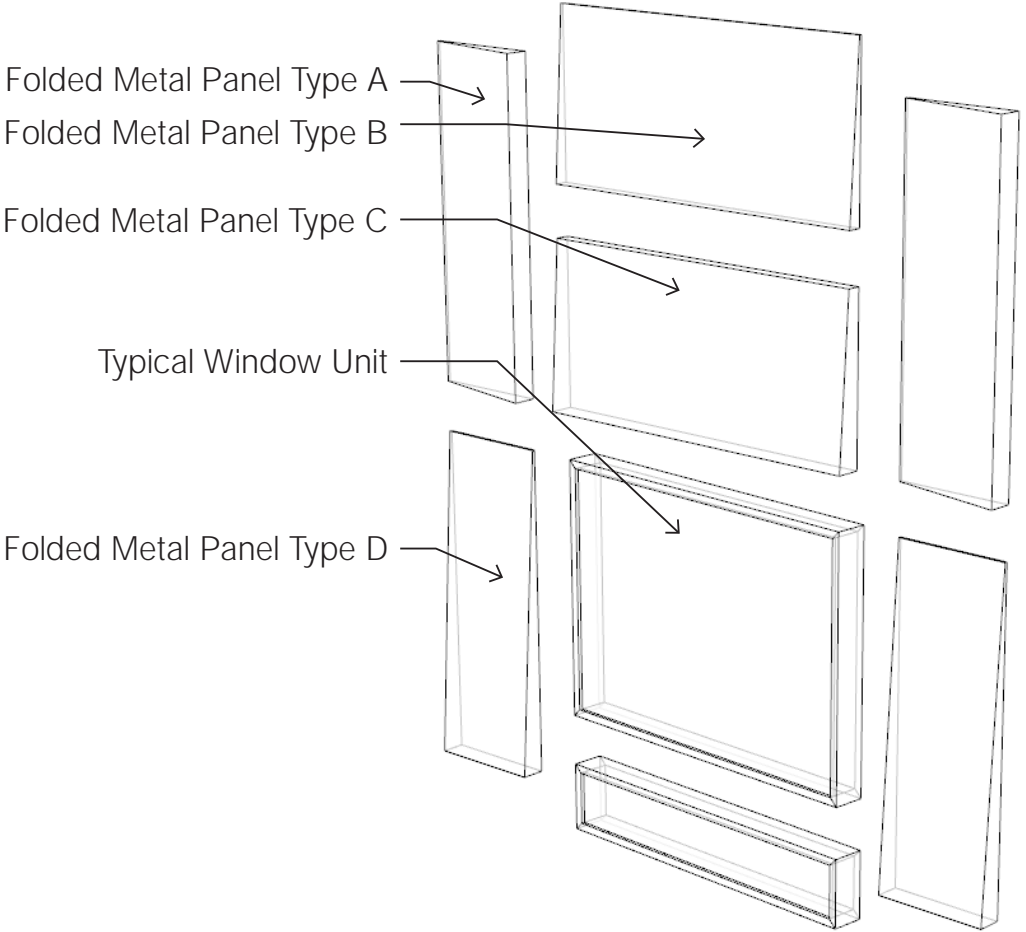
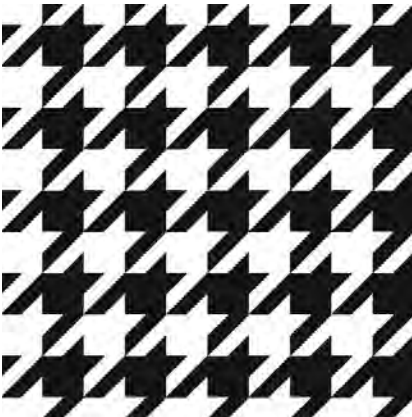


Shingled





# Shingled



Wall Assembly Plan View



# Shingled





# Shingled

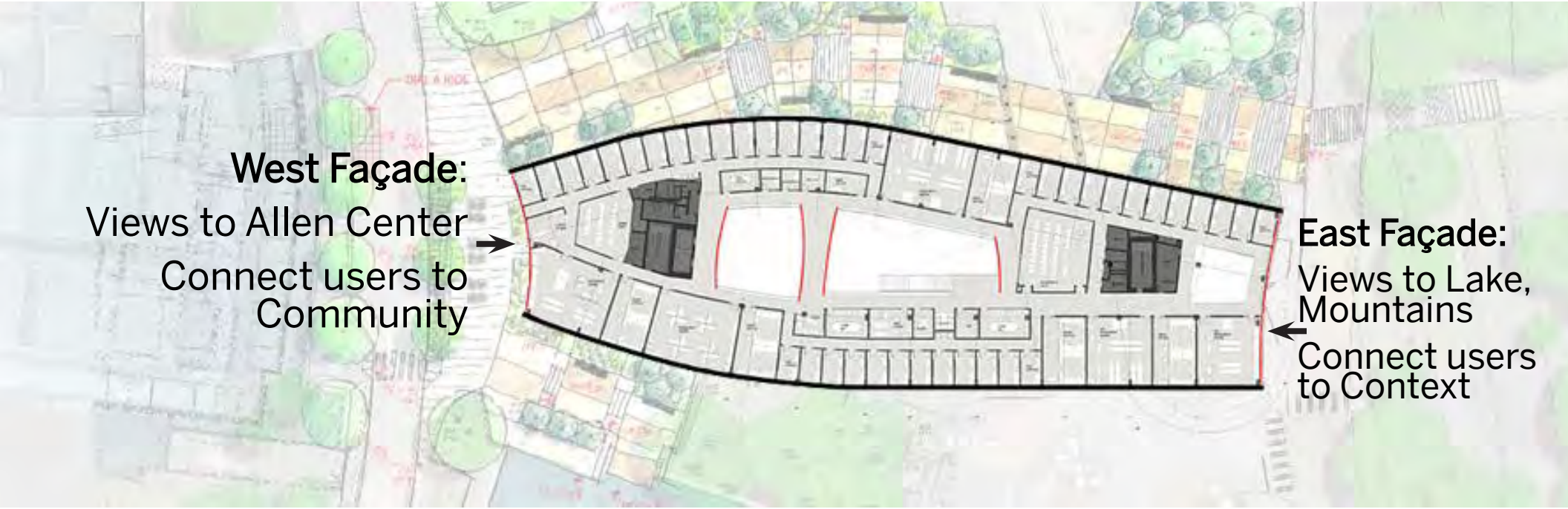




# Shingled

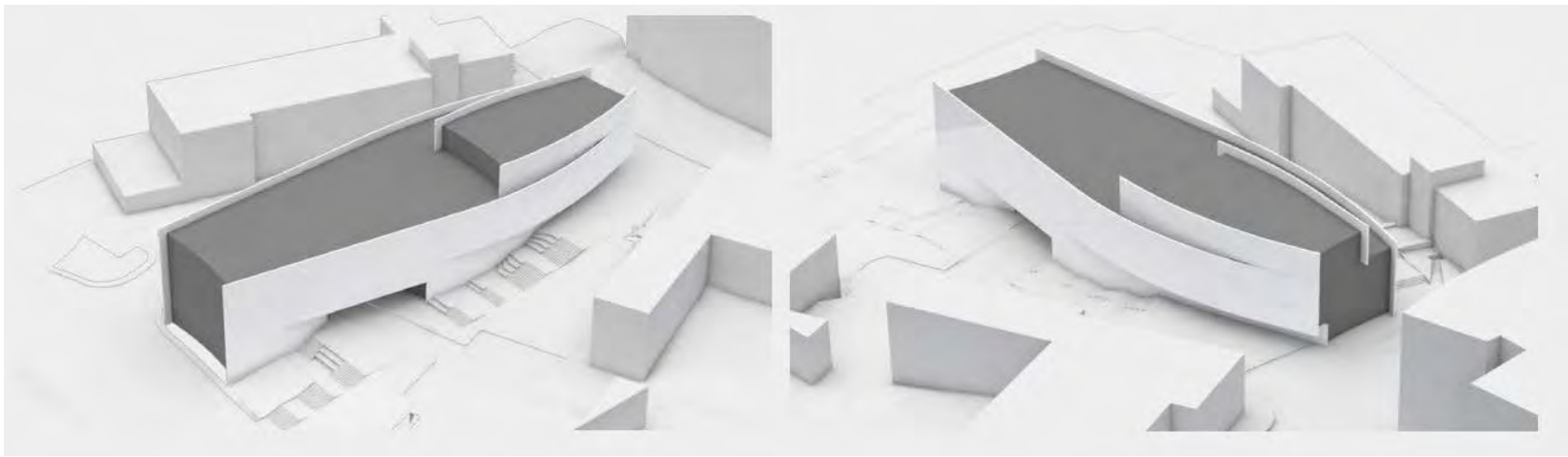




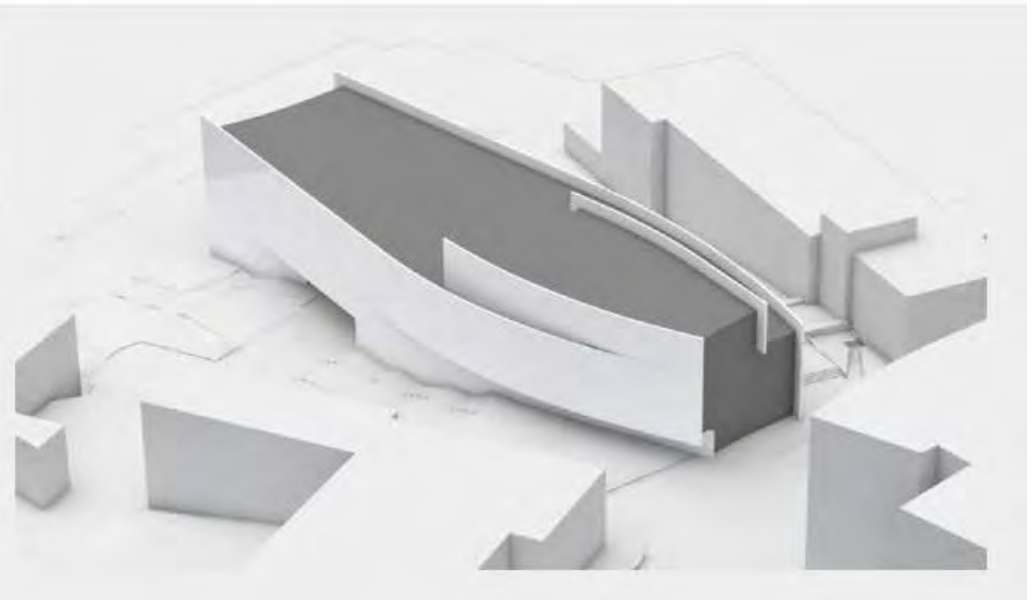
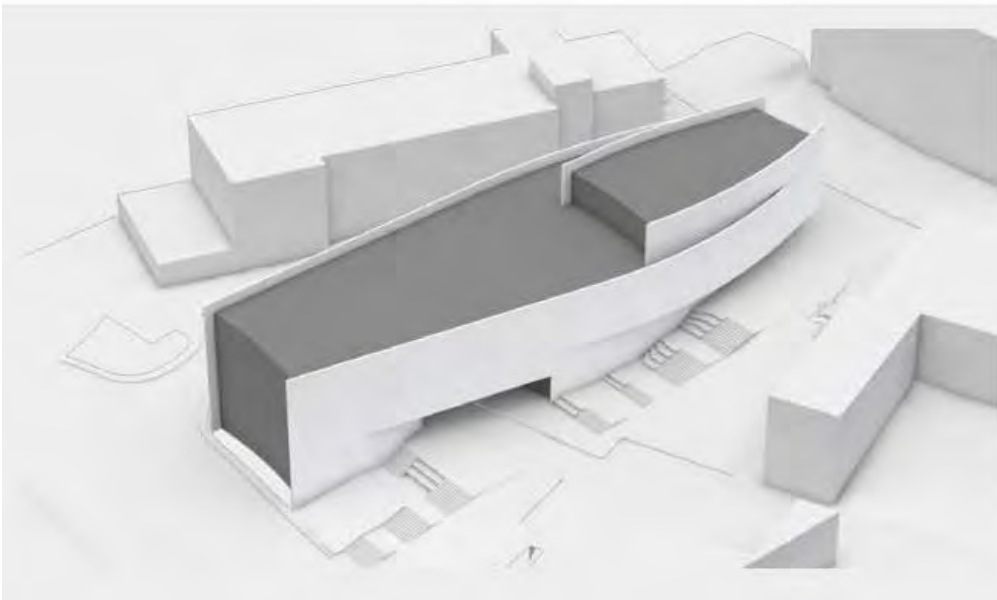
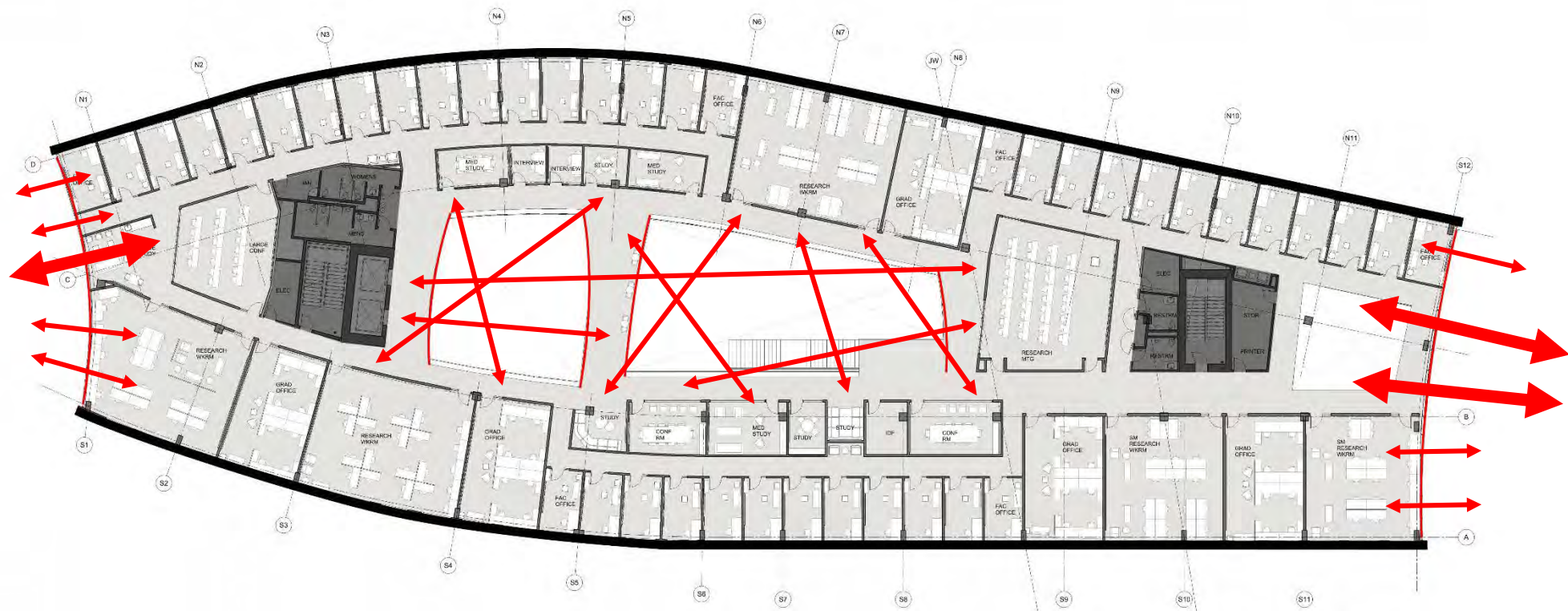


**West Façade:**  
Views to Allen Center  
Connect users to  
Community

**East Façade:**  
Views to Lake,  
Mountains  
Connect users  
to Context

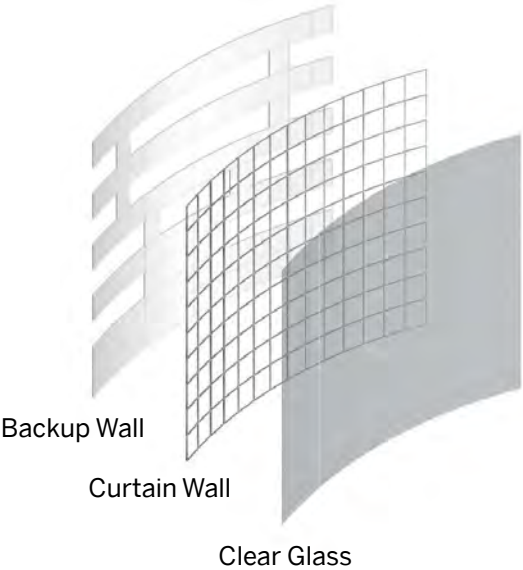




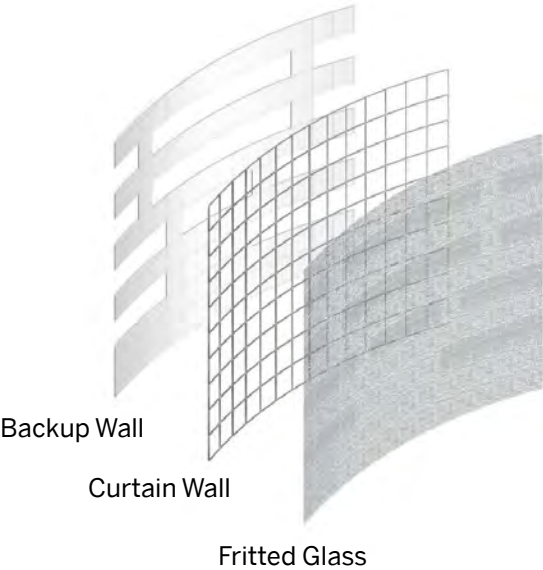




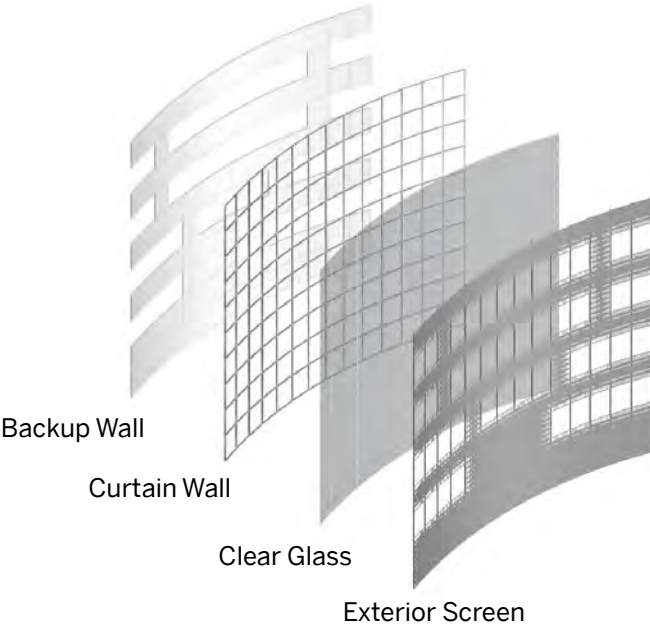
# Clear Glass



# Fritted Glass



# Exterior Screen







Clear Glass - West Elevation





Clear Glass - East Elevation





Fritted Glass - West Elevation





Fritted Glass - East Elevation





Exterior Screen - West Elevation





Exterior Screen - East Elevation









Clear Glass



Fritted Glass



Exterior Screen



