

Bothell STEM 4 —

UNIVERSITY OF WASHINGTON ARCHITECTURAL COMMISSION

LEASE CRUTCHER LEWIS + MITHUN | CASCADIA COLLEGE + UNIVERSITY OF WASHINGTON BOTHELL

FEBRUARY 01, 2021

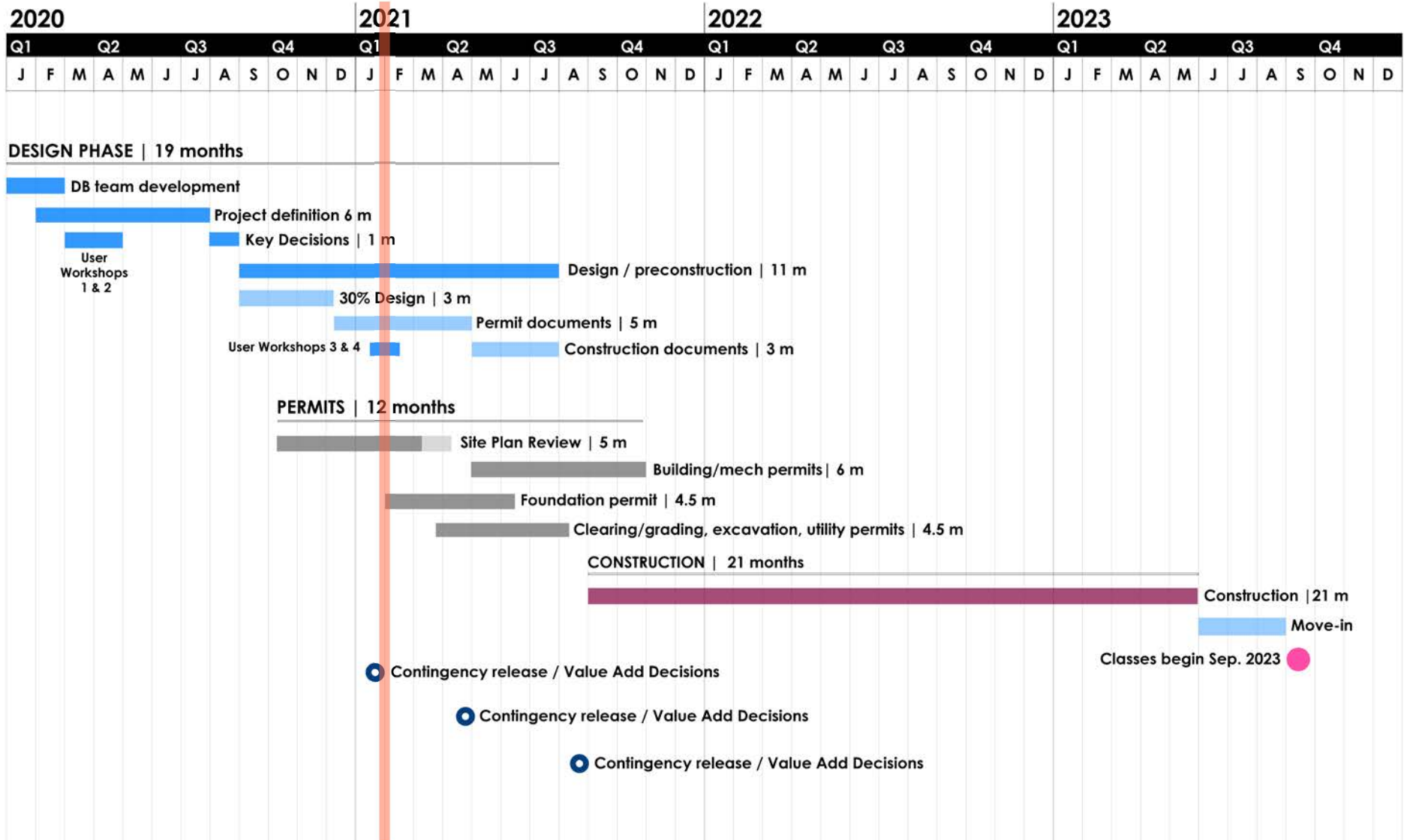
Agenda—

- INTRODUCTION
- LET'S GO AWAY FOR A WHILE
- SITE
- PROGRAM
- EXTERIOR EXPRESSION

PROJECT GOALS

- Create **learning environments** that support **collaboration, active learning,** and **faculty innovation** while **building community** across students and faculty.
- **Maximize space for instruction and research** in a manner consistent with program goals and institutional standards and values.
- Design a physical environment that **promotes interactions between UWB and CC faculty, staff, and students.**
- **Display** the campus' commitment to **environmental and economic sustainability,** including by seeking to **minimizing building life-cycle costs and carbon footprint.**
- **Redistribute STEM facilities** across the campus as appropriate to **improve operational efficacy, student access and relationships.**

SCHEDULE



WHAT WE HEARD (10/26 UWAC MEETING)

- The concept is very logical.

East Plaza

- High visibility at east entry is important.
- Reinforce Crescent Path.
- Consider wrapping landscape around south wing and/or rotating east wall.

West Entry

- Entry is unresolved.
- Bridge concept is thoughtful, penthouse over entry is awkward.

Other Site Issues

- Address messy character of the outdoor workspace.
- Locate Ancestors to maintain their original relationship to the forest.

Exterior Expression

- Provide north and south views into the landscape for both institutions.
- Increase inside/out connections on the south side.
- Consider a less repetitive window pattern.
- Consider alternatives to articulating the base as a separate element.
- Differentiate north and south façades.
- Clarify elements of the building that engage the hillside and those that float above.

Site—

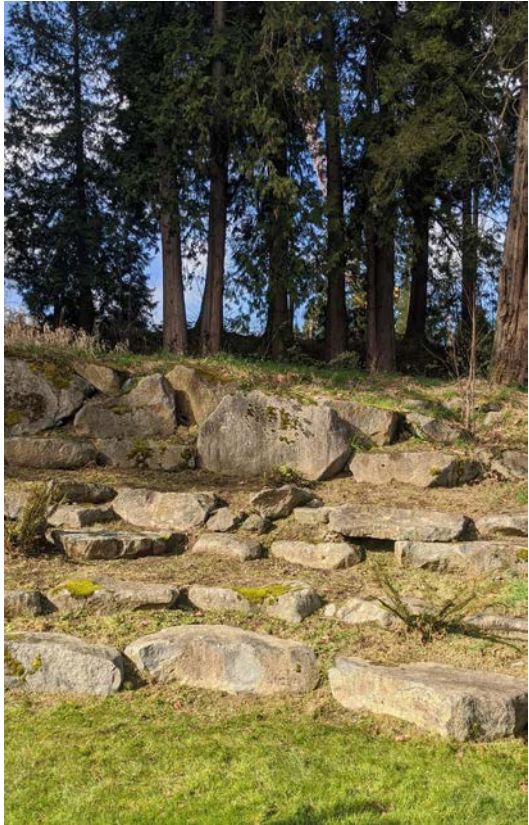
CONTEXT: UPLAND CANOPY



CONTEXT: HUMAN-CENTRIC | MANAGED LANDSCAPE



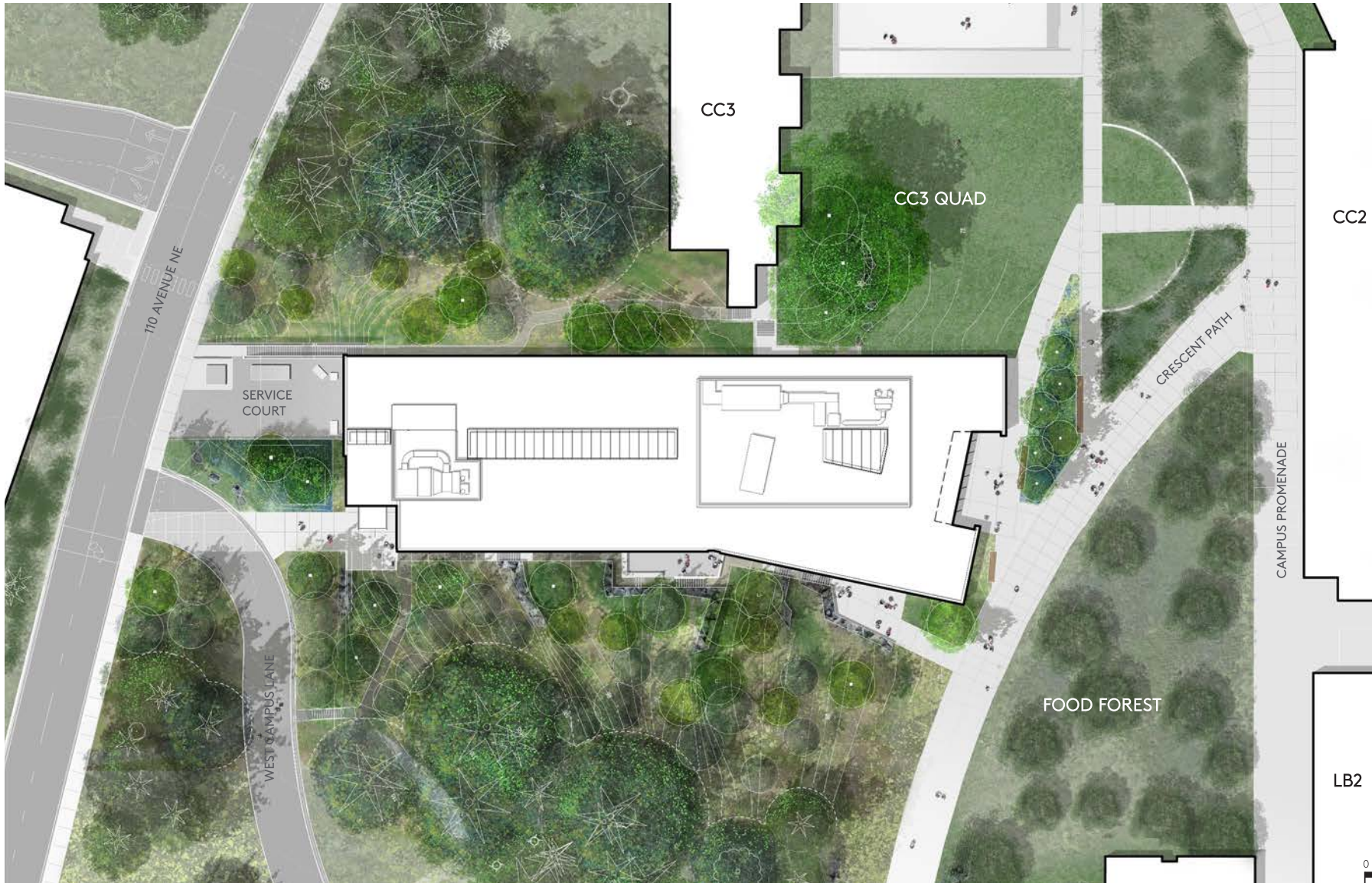
CONCEPT / INSPIRATION: DRAWING FROM THE CONTEXT



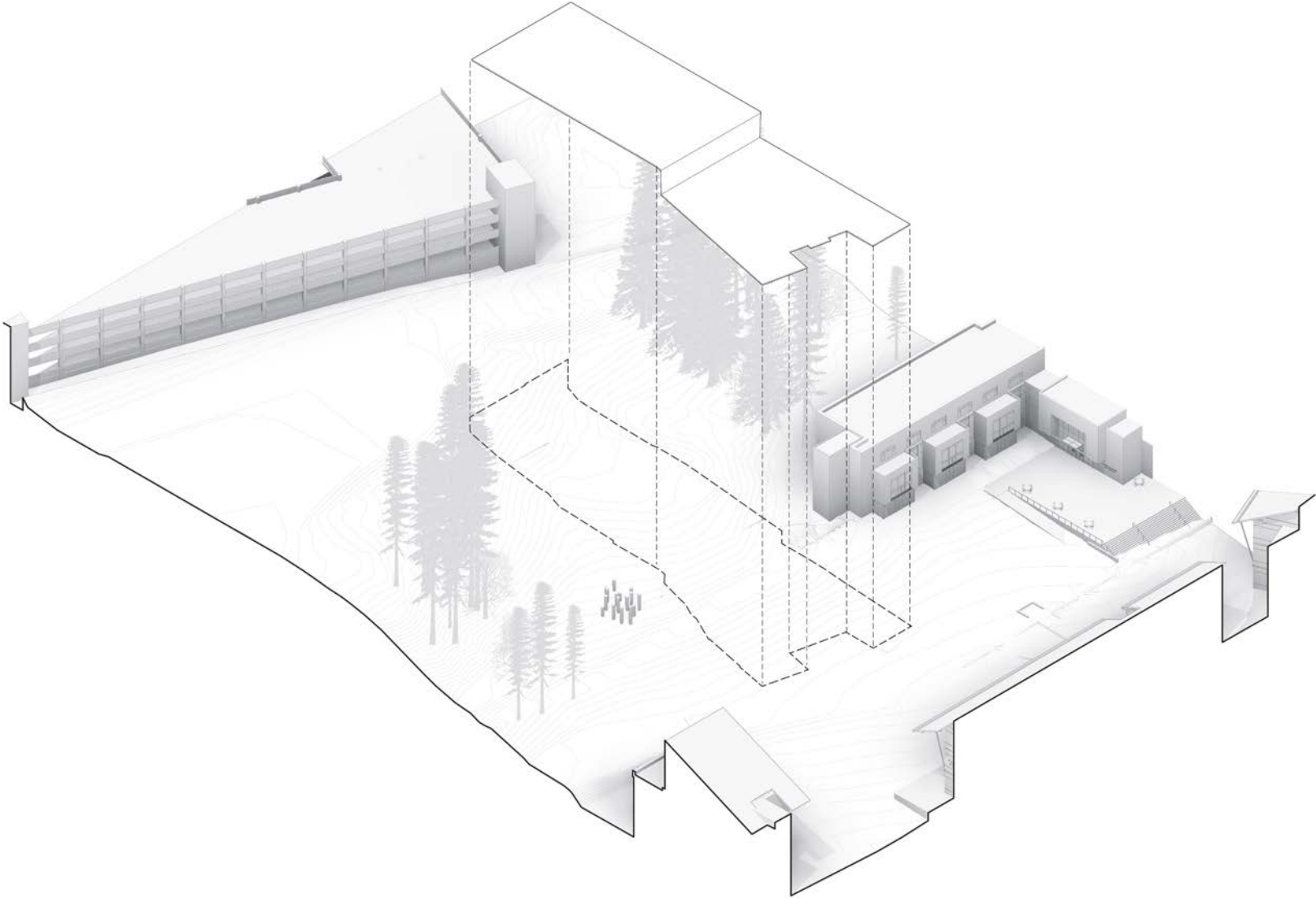
VICINITY PLAN



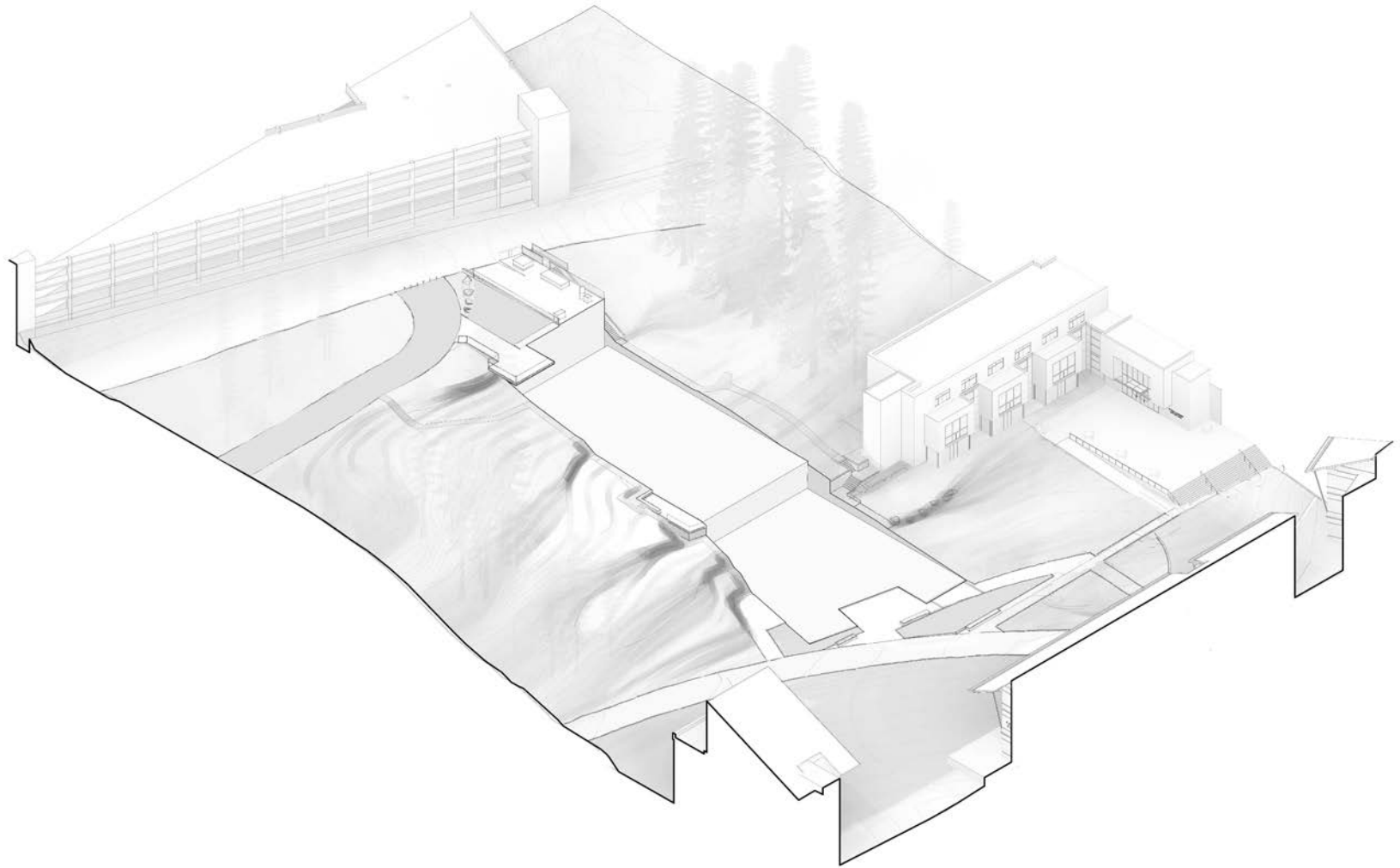
SITE PLAN



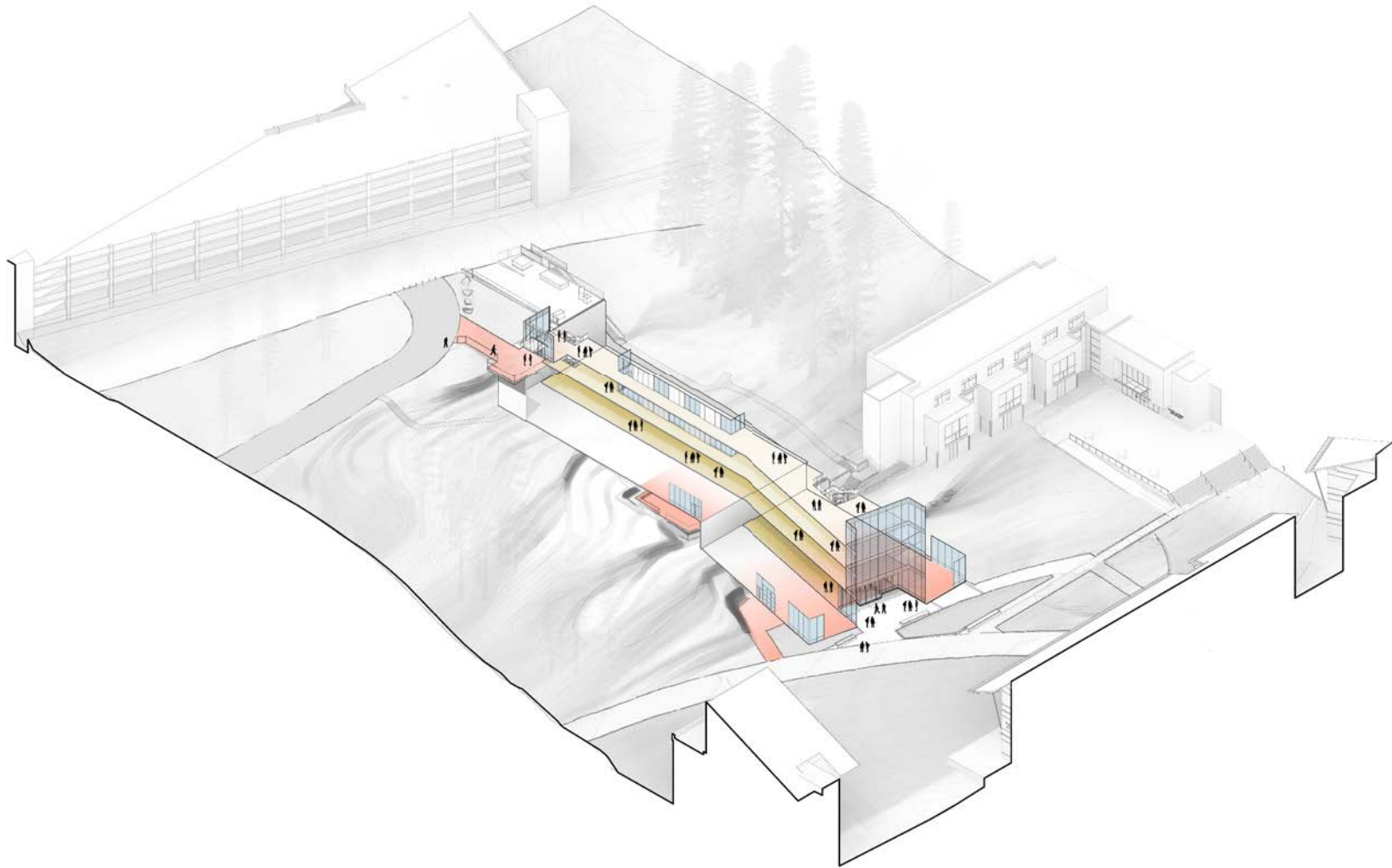
SITING THE BUILDING



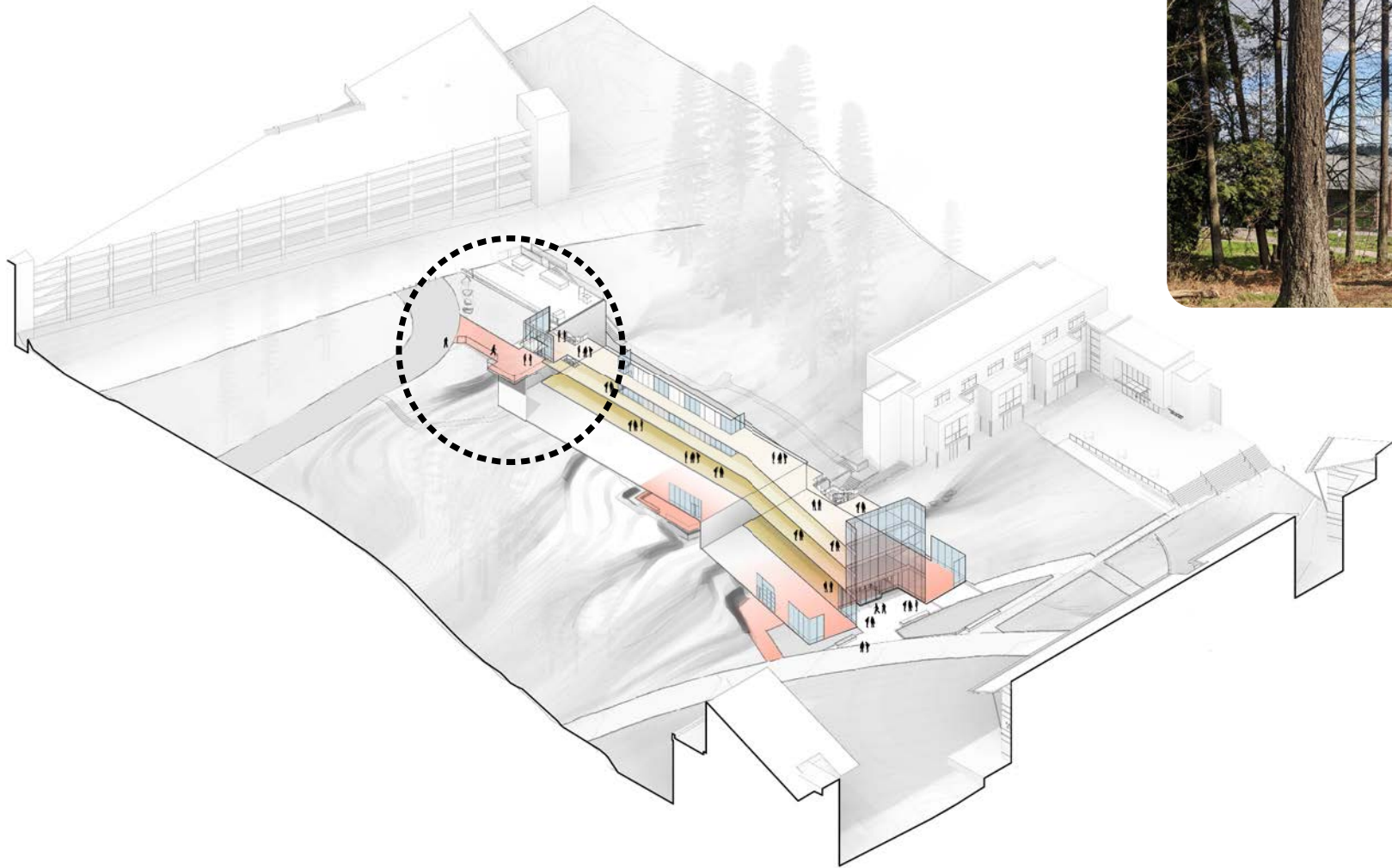
BENCHING THE SLOPE



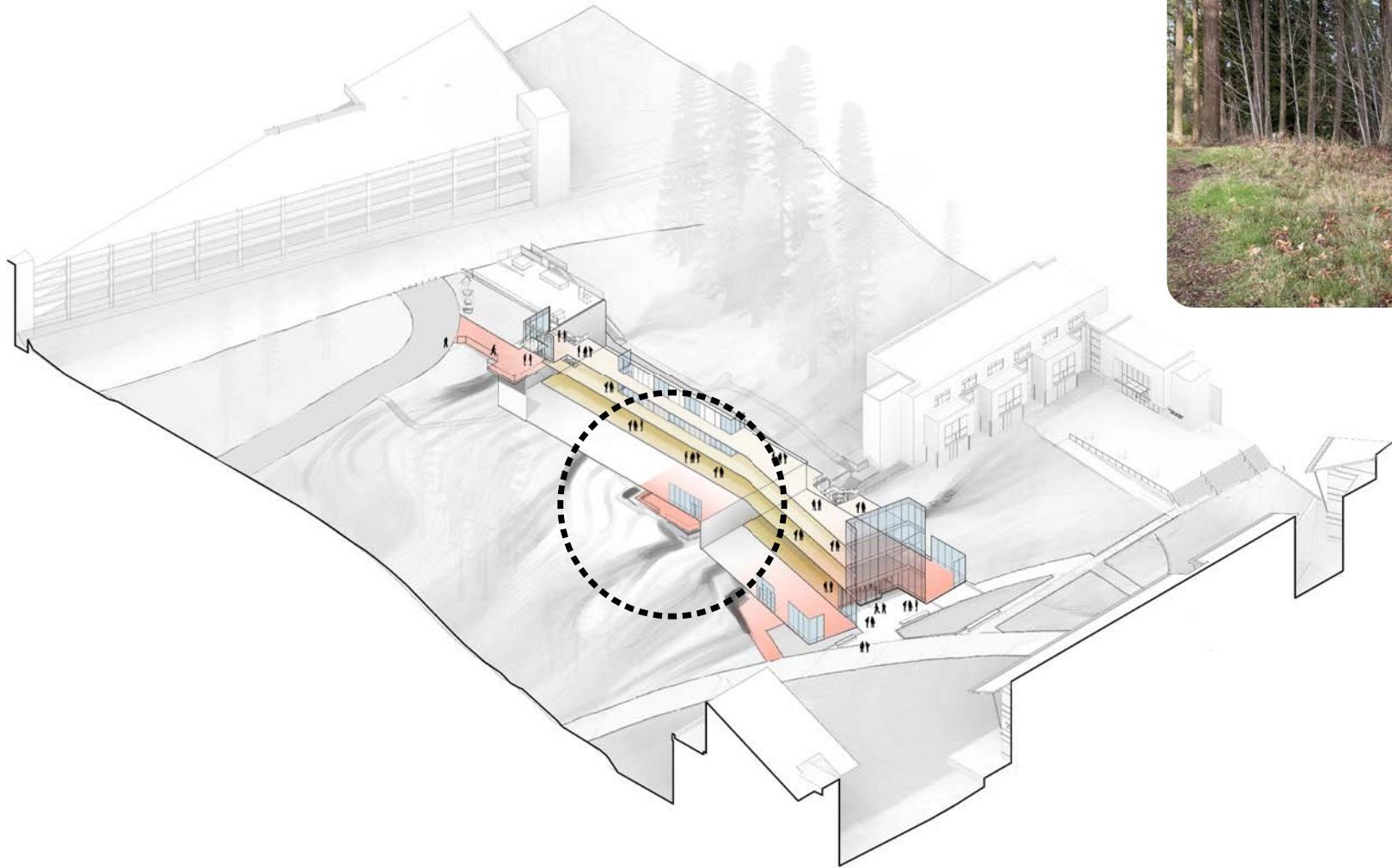
INSIDE - OUTSIDE



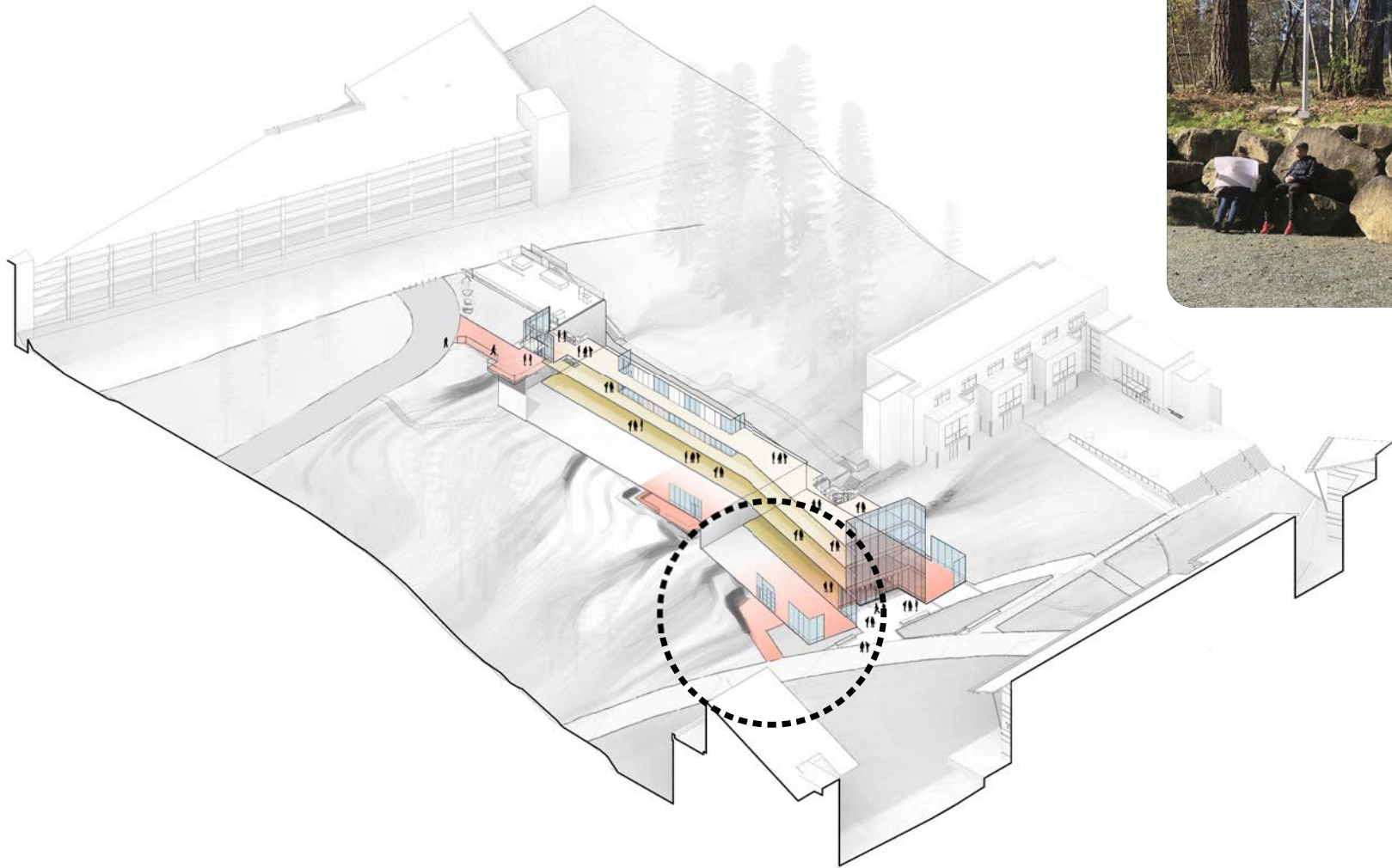
INSIDE - OUTSIDE



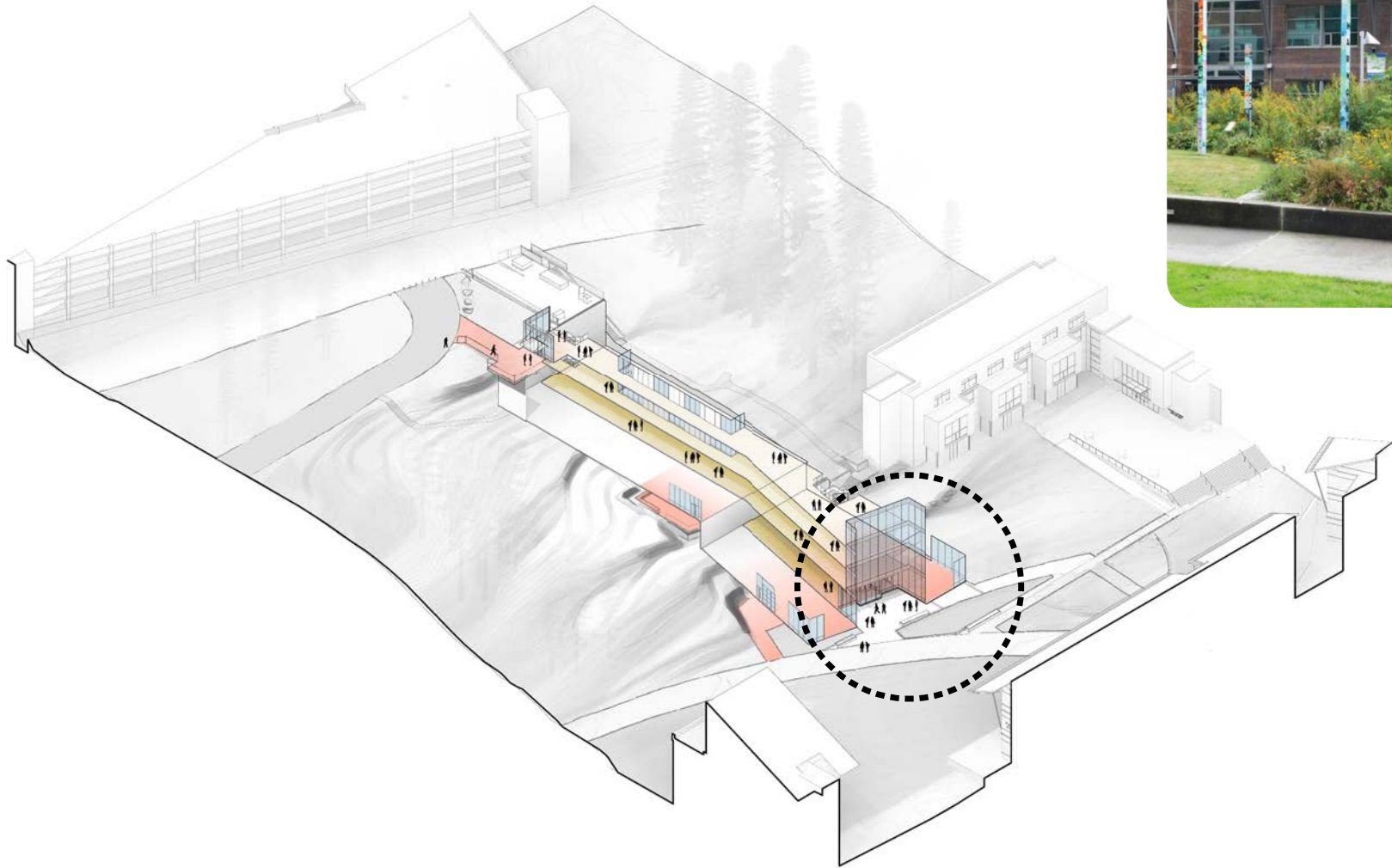
INSIDE - OUTSIDE



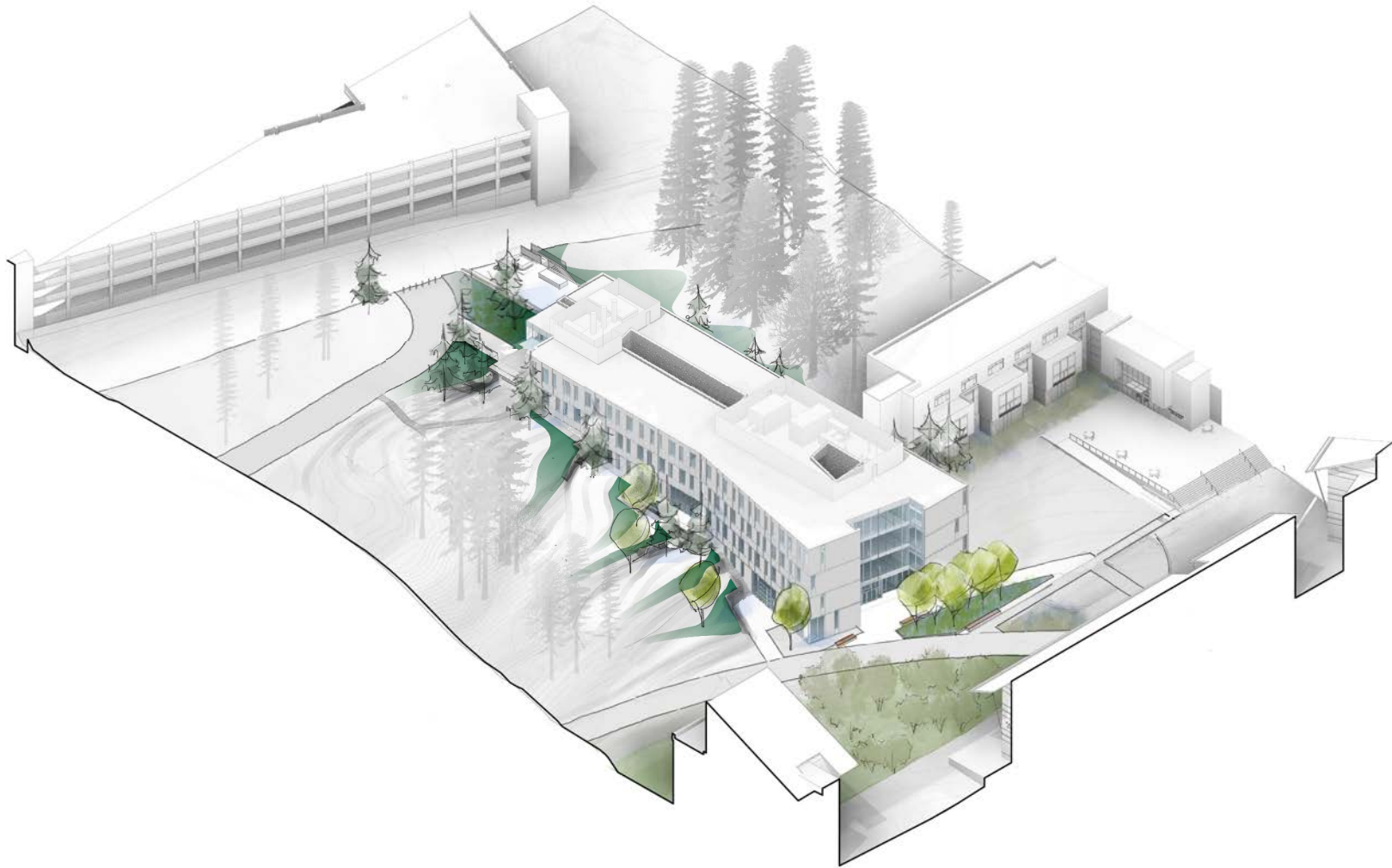
INSIDE - OUTSIDE



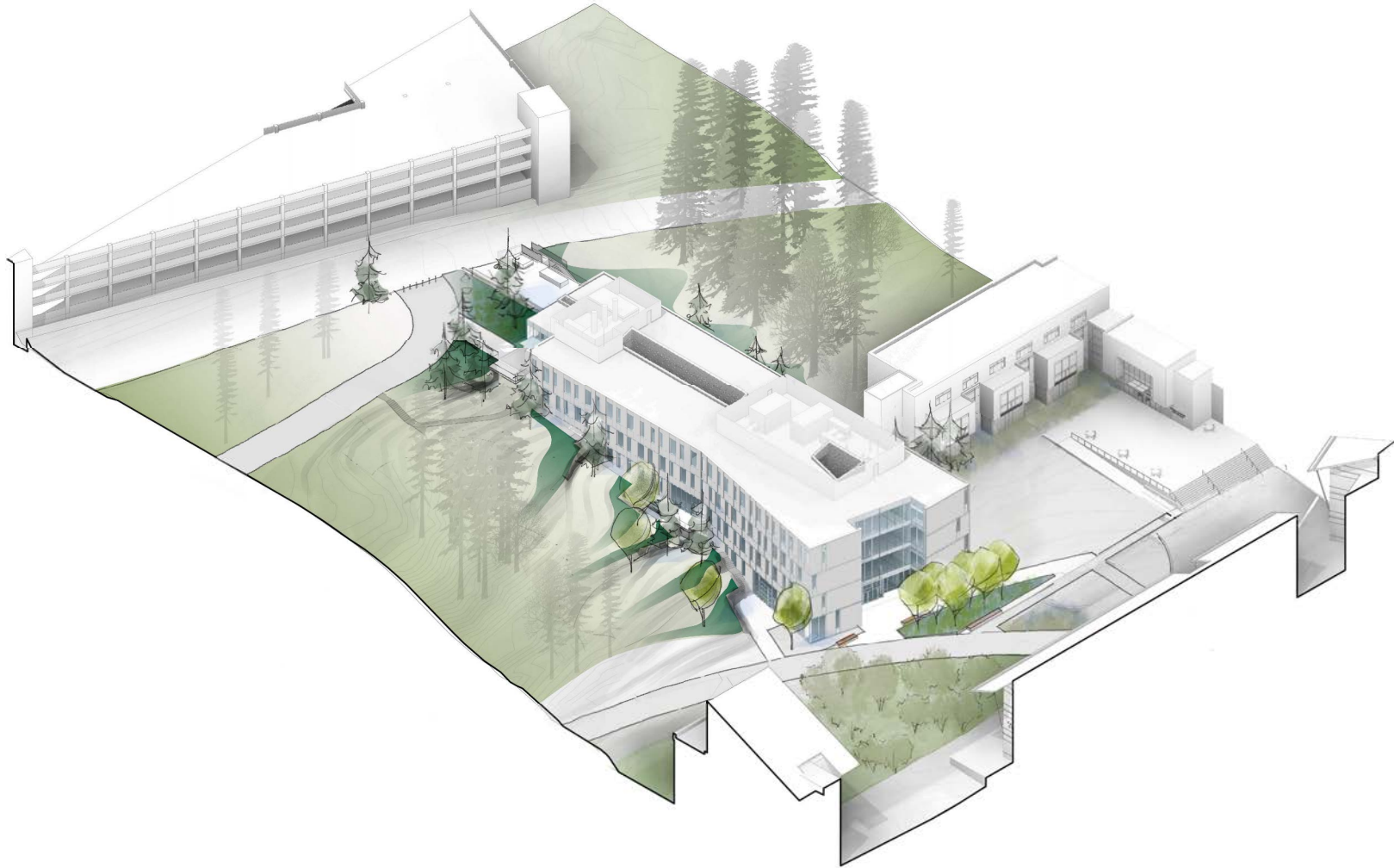
INSIDE - OUTSIDE



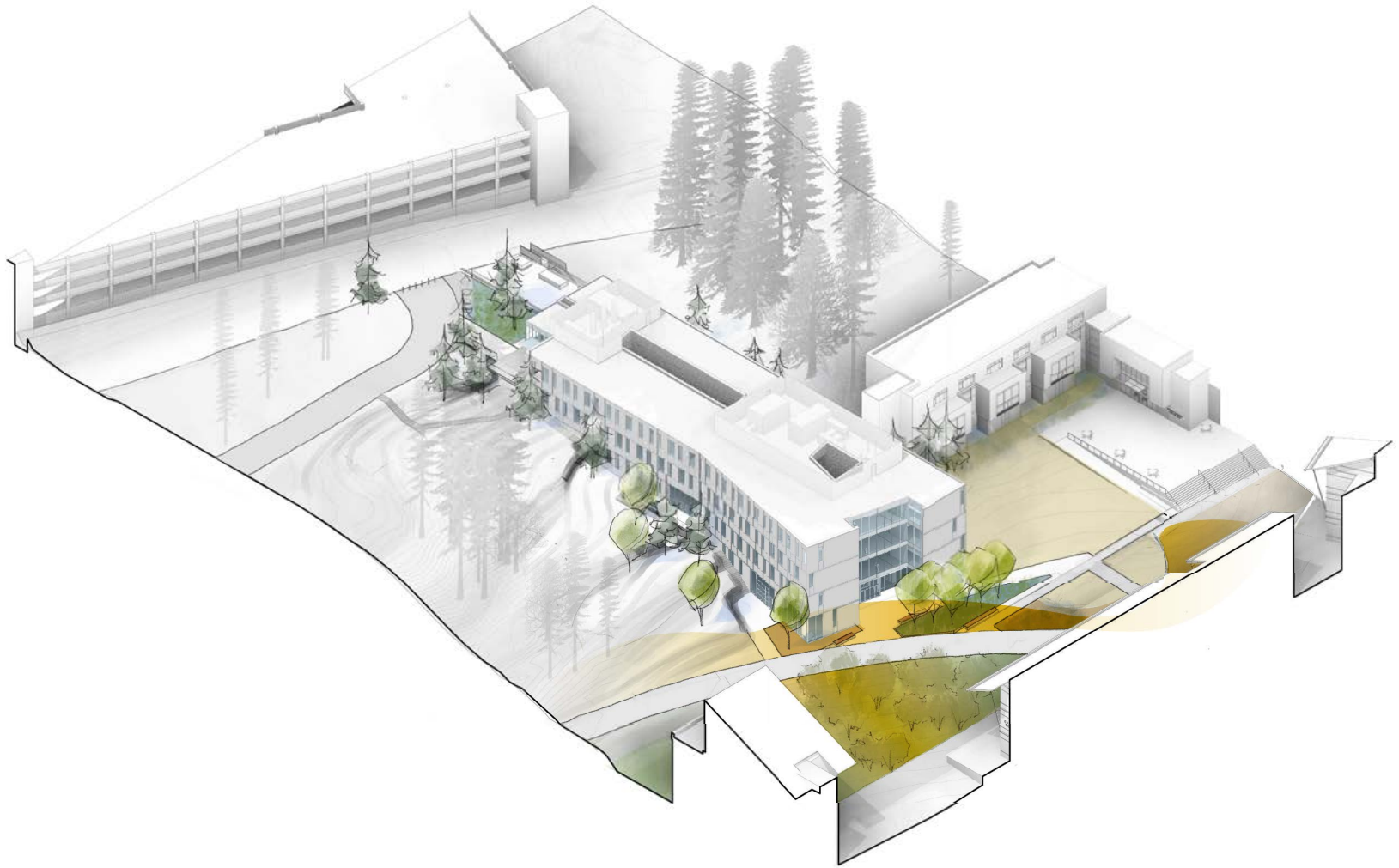
LANDSCAPE TYPOLOGY: UPLAND CANOPY



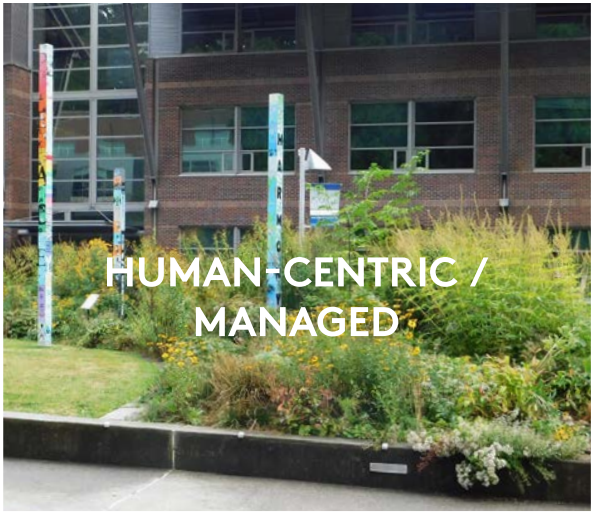
LANDSCAPE TYPOLOGY: UPLAND CANOPY RESTORATION



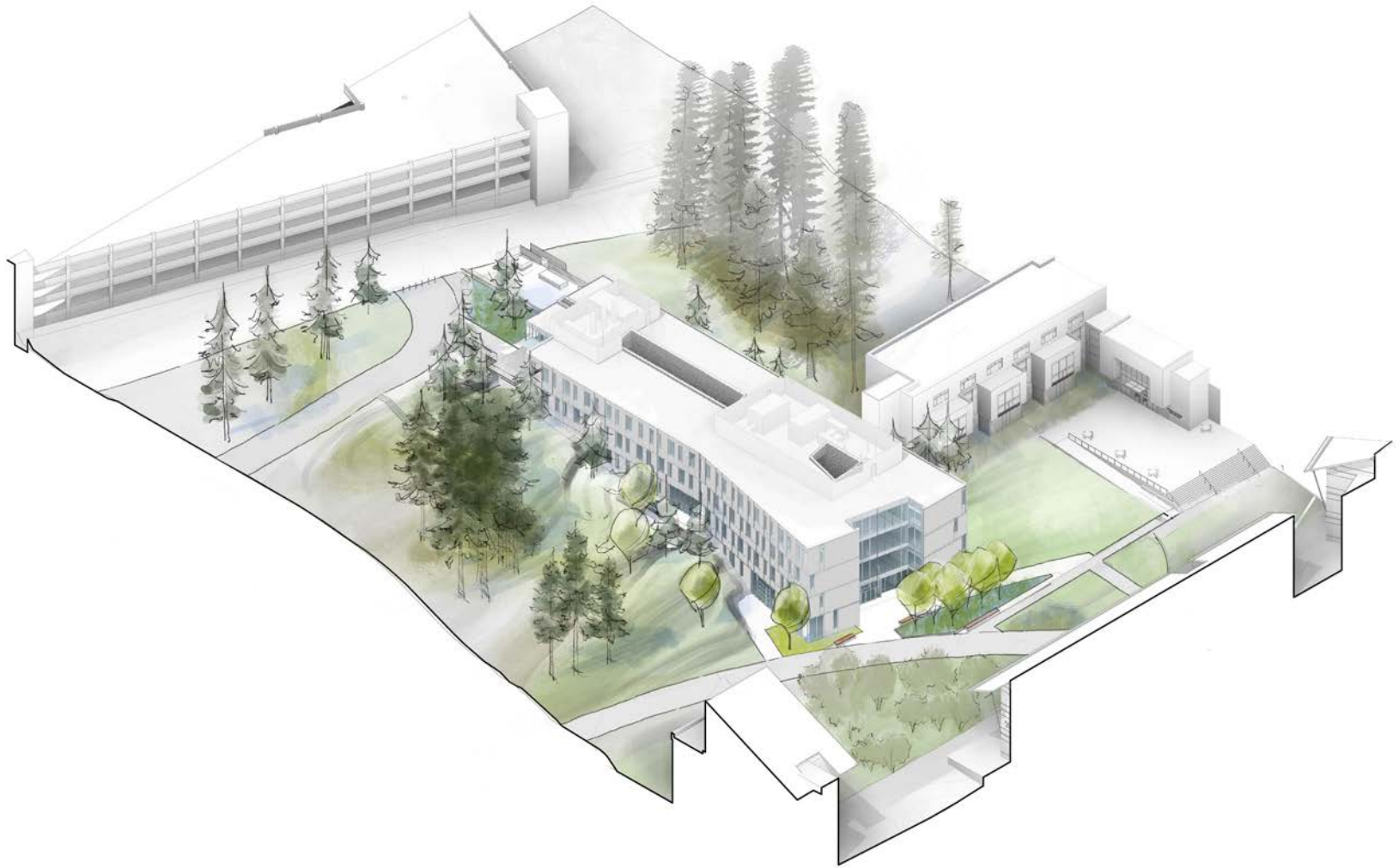
LANDSCAPE TYPOLOGY: HUMAN-CENTRIC / MANAGED



SITE CHARACTER



KNITTING IN



Program—

LEVEL 0

- 010 EE CAPSTONE LAB
- 011 ENGINEERING CAPSTONE LAB
- 012 ME CAPSTONE LAB
- 015 MACHINE SHOP
- 016 MATERIALS TESTING LAB



KEY PLAN

- CC
- UWB
- SHARED
- SUPPORT



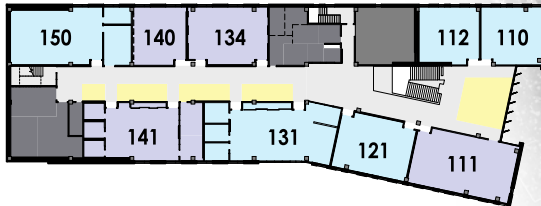
LEVEL 1

- 110 CLASSROOM
- 111 CLASSROOM
- 112 CLASSROOM
- 121 COMPUTER PROGRAMMING LAB
- 131 INTERDISCIPLINARY LAB
- 134 CLASSROOM
- 140 INSTRUCTIONAL LAB
- 141 COMPUTER LAB
- 150 NETWORK LAB



KEY PLAN

- CC
- UWB
- SHARED
- SUPPORT



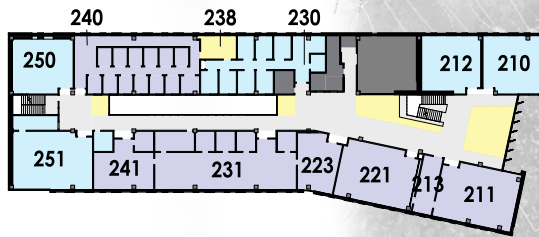
LEVEL 2

- 210 CLASSROOM
- 211 ENGINEERING DRY LAB
- 212 CLASSROOM
- 213 ENGINEERING LAB SUPPORT
- 221 ENGINEERING WET LAB
- 223 BIOLOGY TEACHING LAB
- 230 OFFICE SUITE
- 231 BIOLOGY RESEARCH LAB
- 238 BREAK ROOM
- 240 OFFICE SUITE
- 241 BIOLOGY RESEARCH SUITE
- 250 CLASSROOM
- 251 ENGINEERING LAB



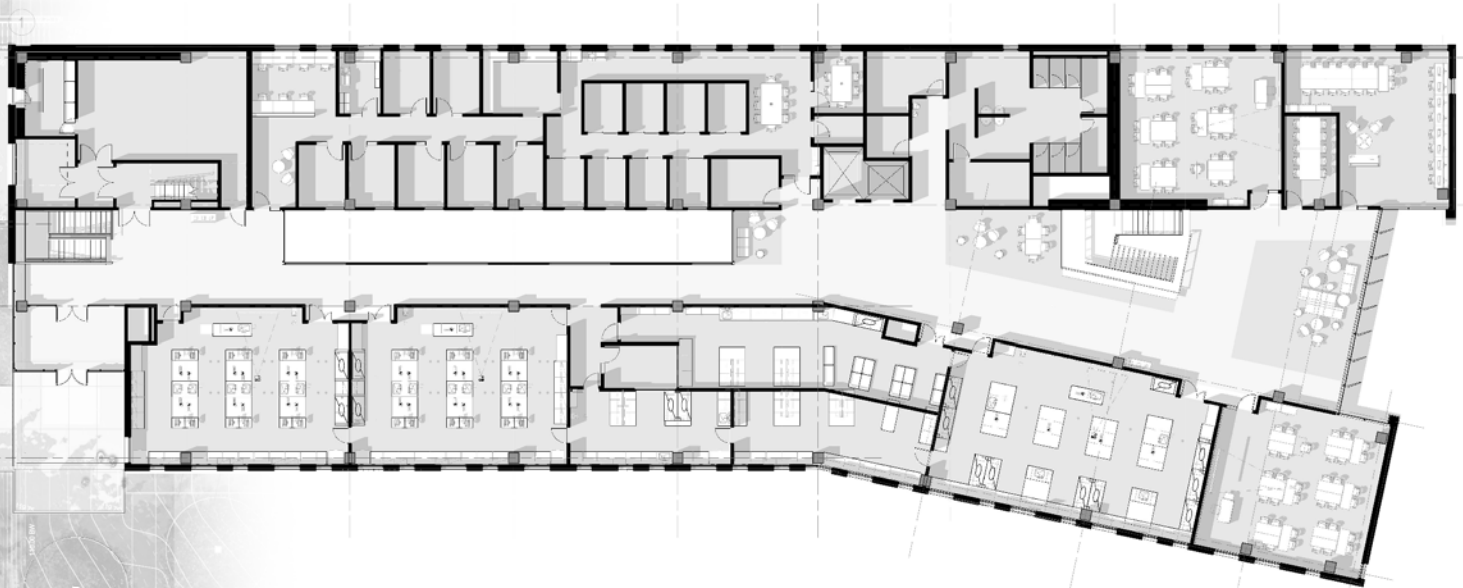
KEY PLAN

- CC
- UWB
- SHARED
- SUPPORT



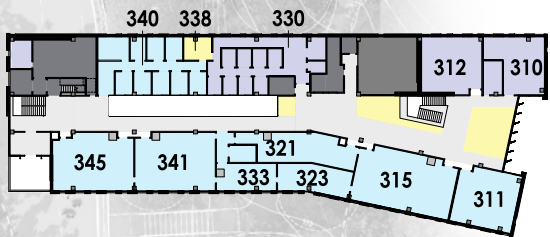
LEVEL 3

- 310 CSS RESEARCH LAB
- 311 CLASSROOM
- 312 CLASSROOM
- 315 ORGANIC CHEMISTRY LAB
- 321 CHEMISTRY LAB PREP
- 323 ANALYTICS / INSTRUMENT LAB
- 330 OFFICE SUITE
- 333 CHEMISTRY PROJECT LAB
- 338 BREAK ROOM
- 340 OFFICE SUITE
- 341 GENERAL CHEMISTRY LAB
- 345 GENERAL CHEMISTRY LAB

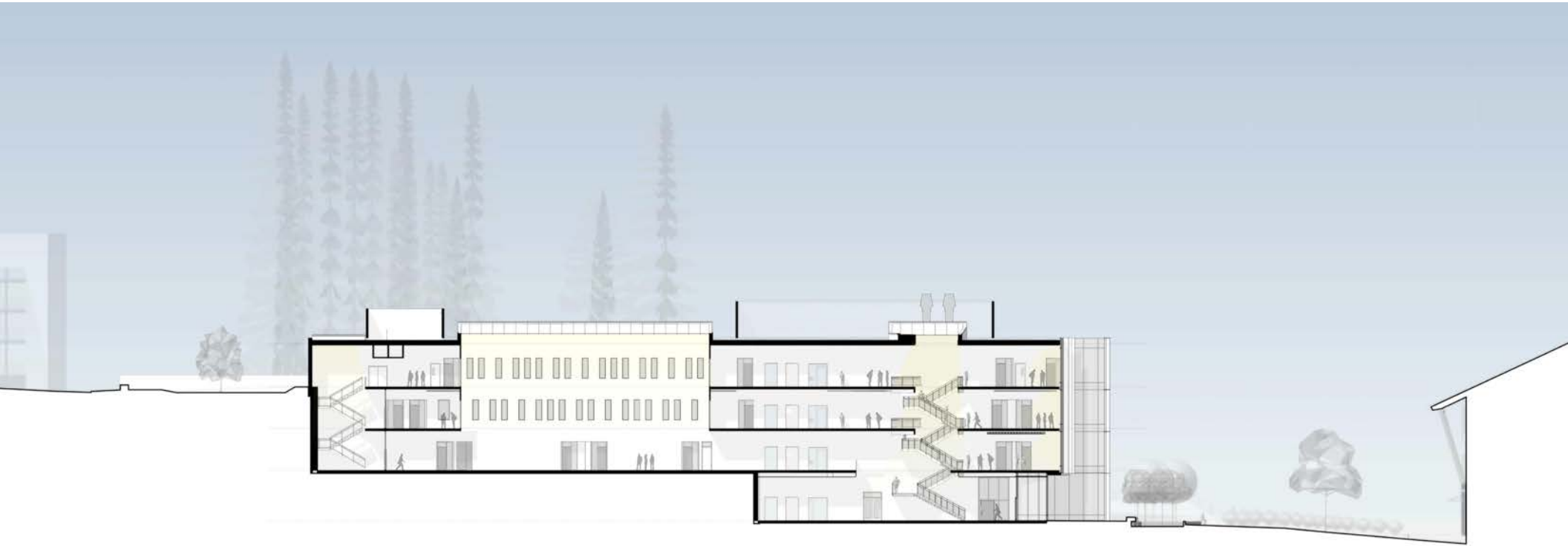


KEY PLAN

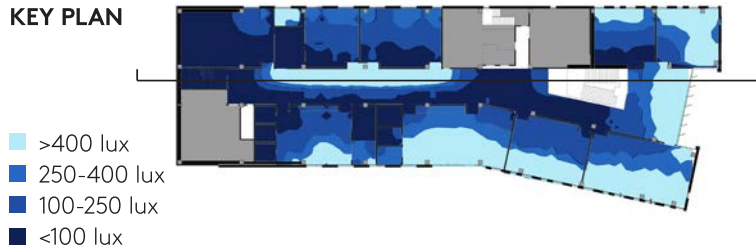
- CC
- UWB
- SHARED
- SUPPORT



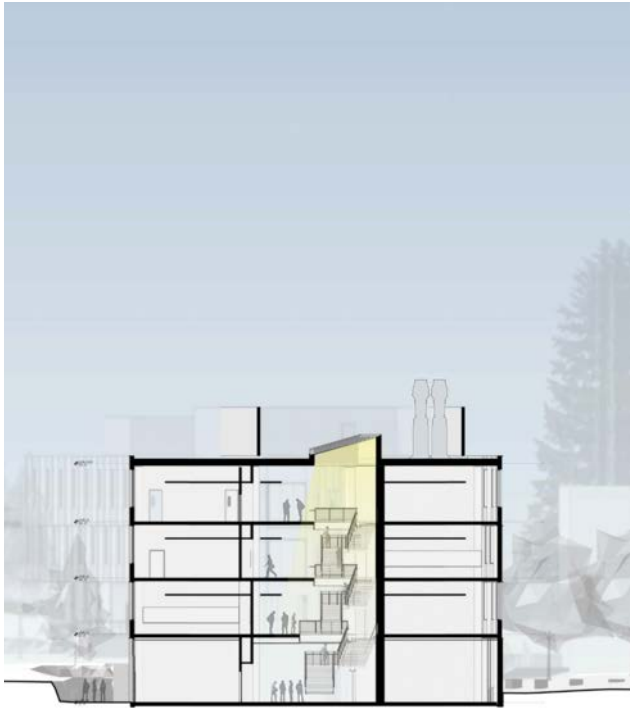
EAST/WEST SECTION



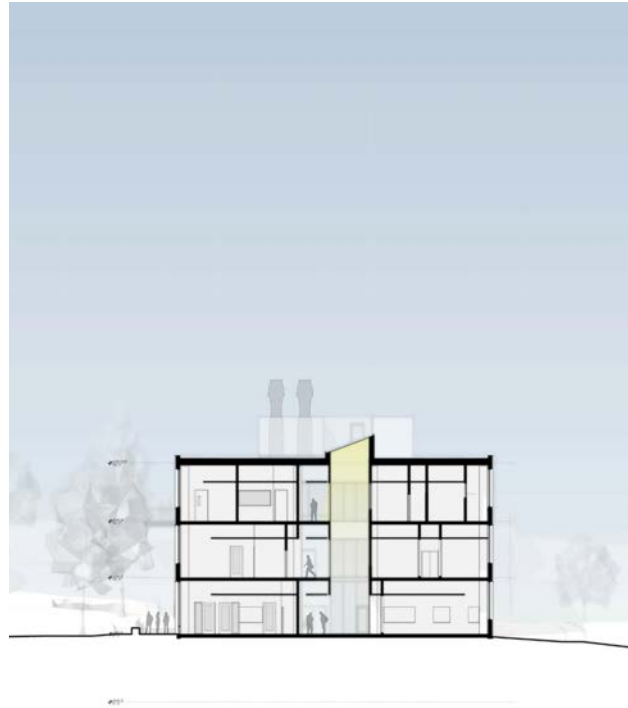
KEY PLAN



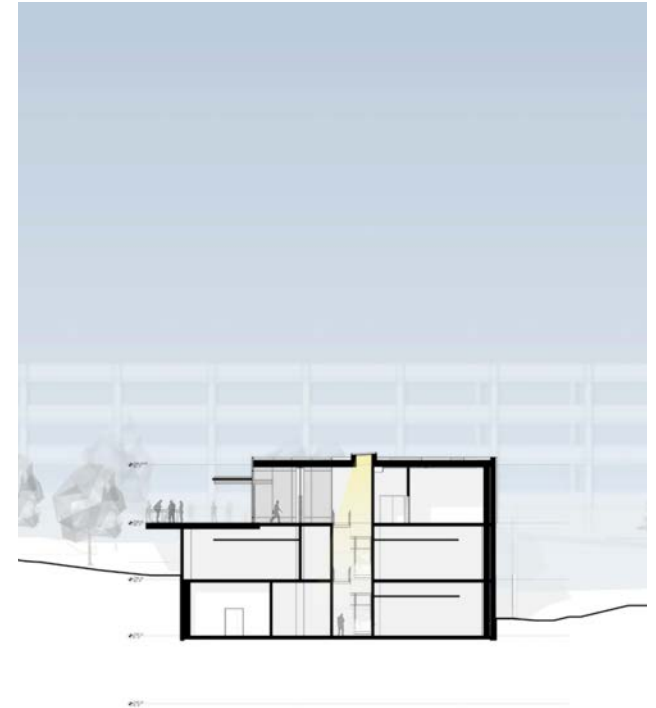
NORTH/SOUTH SECTIONS



SECTION A - EAST STAIR



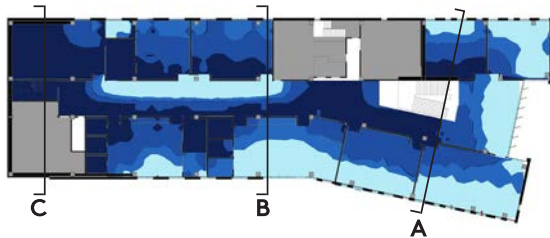
SECTION B - LIGHTWELL



SECTION C - WEST STAIR

KEY PLAN

- >400 lux
- 250-400 lux
- 100-250 lux
- <100 lux



EAST STAIR/STUDENT STUDY



LIGHTWELL/STUDENT STUDY



STUDENT STUDY SPACES



INTERIOR - EXTERIOR VIEWS



010 - ENGINEERING CAPSTONE LAB



110 - CLASSROOM



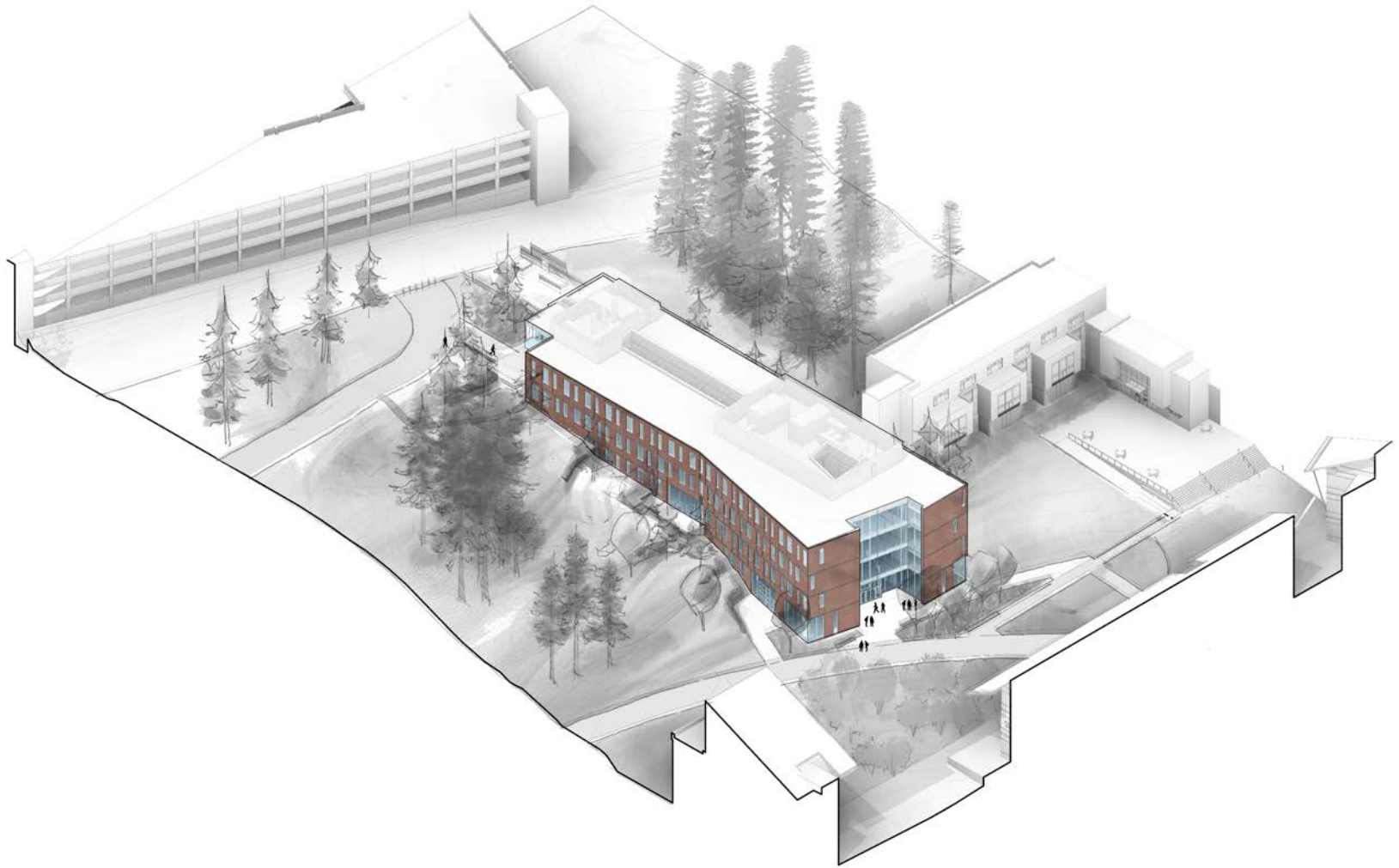
130 - INTERDISCIPLINARY LAB

Exterior Expression—

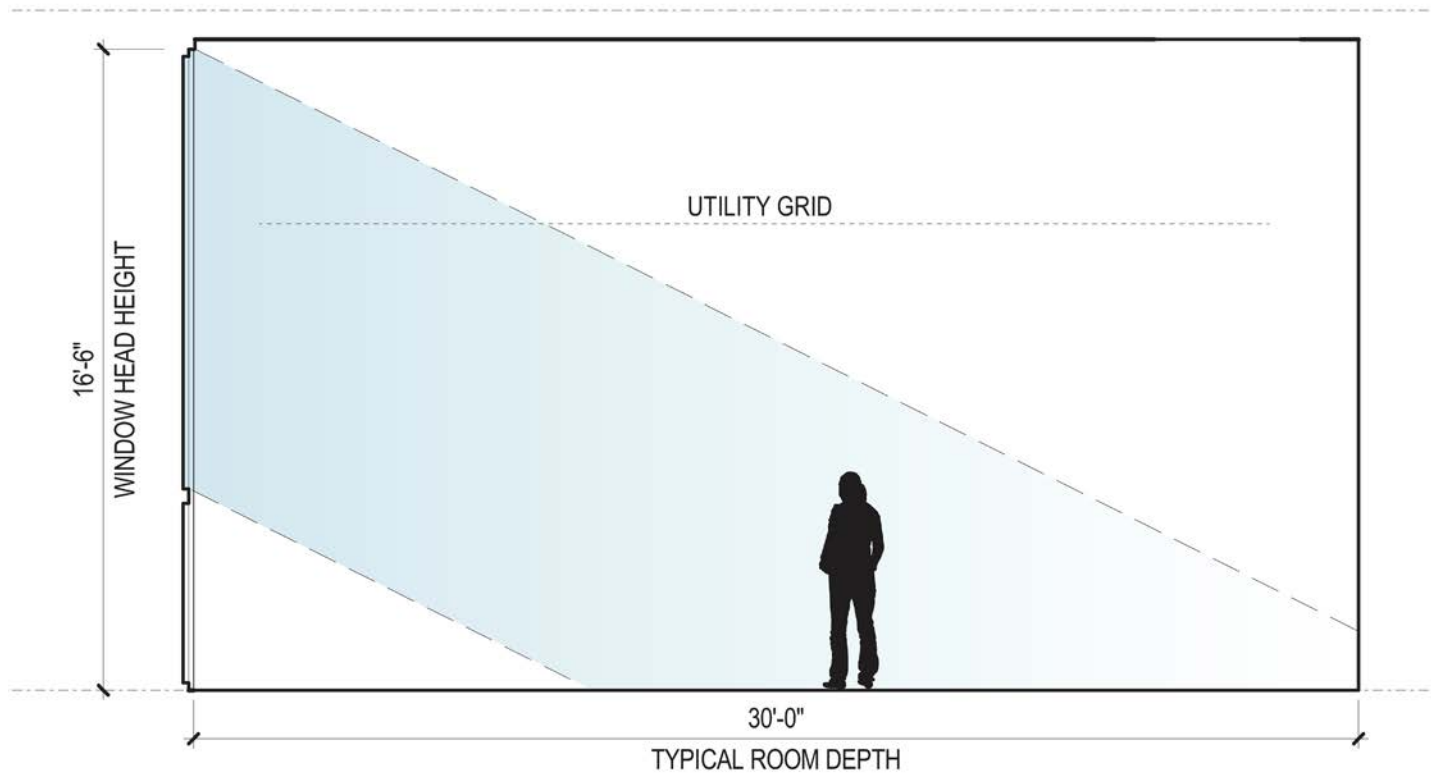
GOALS

- Make programs visible
- Maximize daylight and views
- Provide long range flexibility & adaptability
- Utilize a simple palette of materials
- Reflect the nature of the site and the program
 - Trees / topography / movement
 - Science, technology, engineering and math

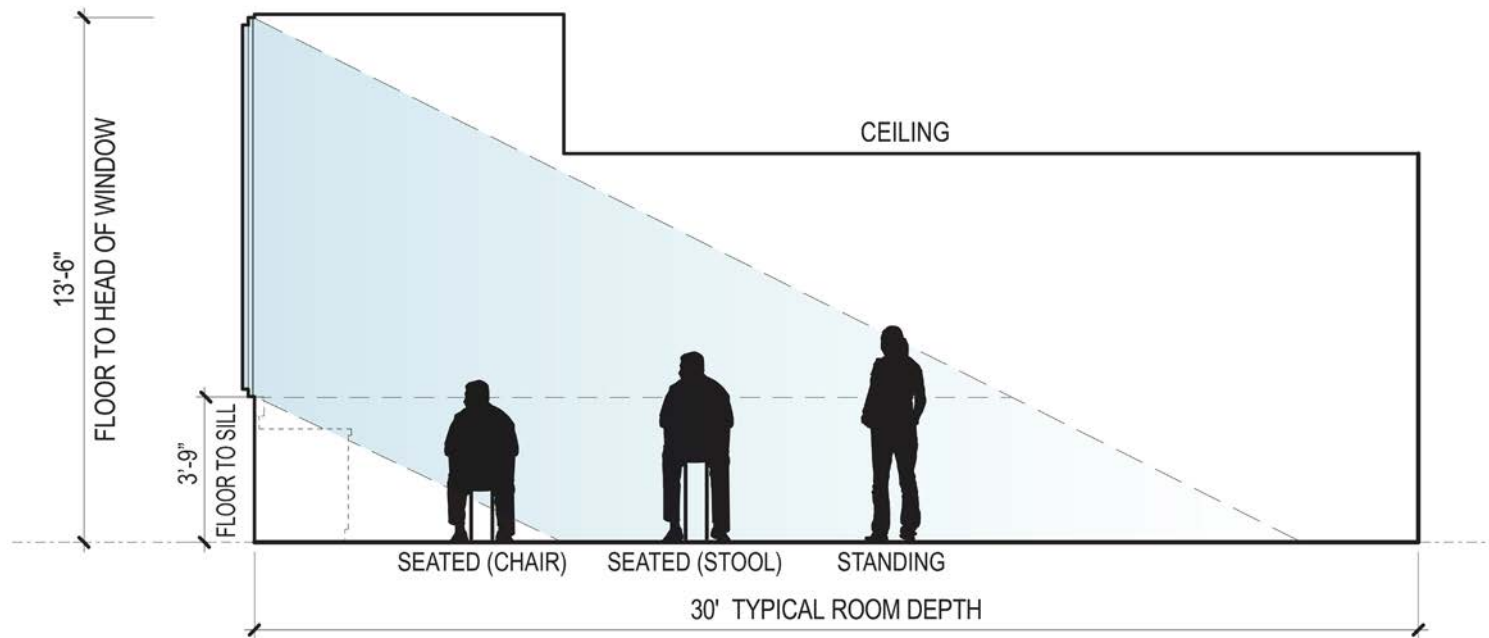
BUILDING DIAGRAM



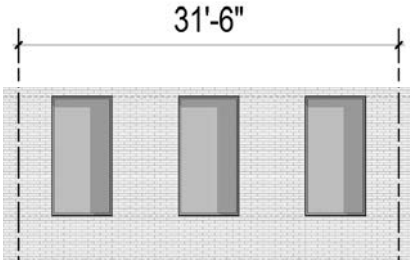
DAYLIGHT SECTION: LEVEL 0 (SHOPS)



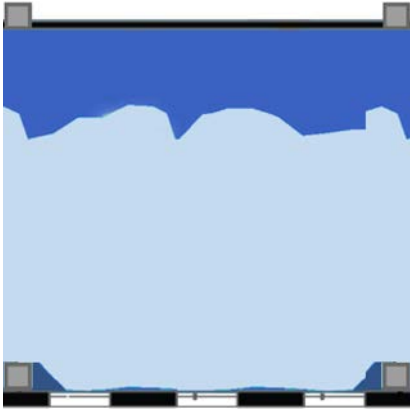
DAYLIGHT SECTION: LEVELS 1, 2 & 3 (LABS & CLASSROOMS)



REGULAR FENESTRATION

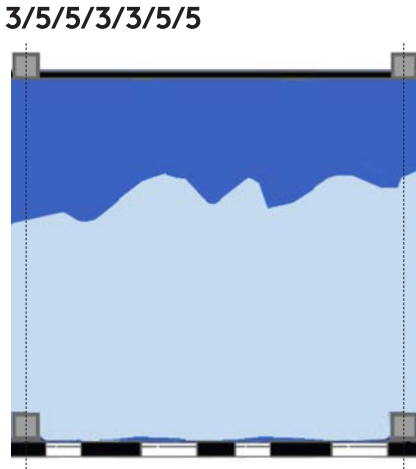
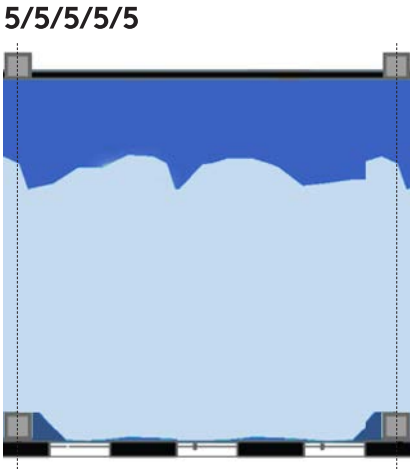
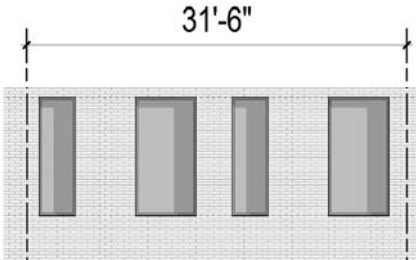
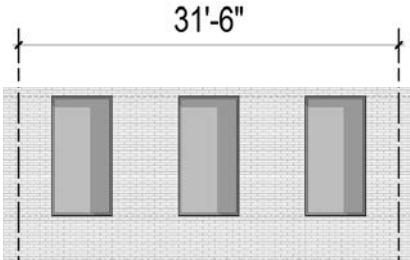


5/5/5/5/5



- >400 lux
- 250-400 lux
- <250 lux

MODULATED FENESTRATION

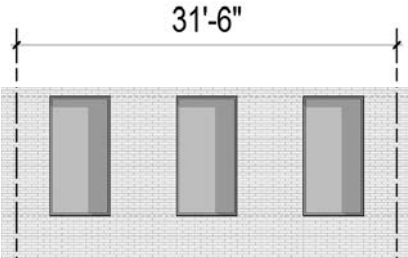


- >400 lux
- 250-400 lux
- <250 lux

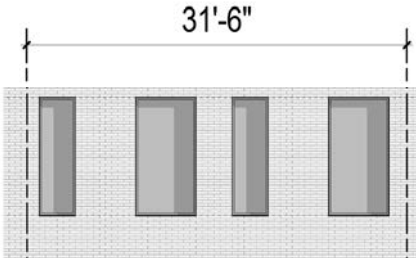
MODULATED FENESTRATION



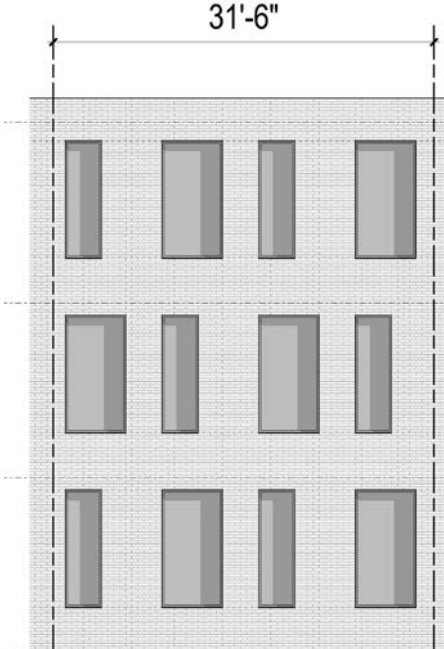
STAGGERED FENESTRATION



5/5/5/5/5

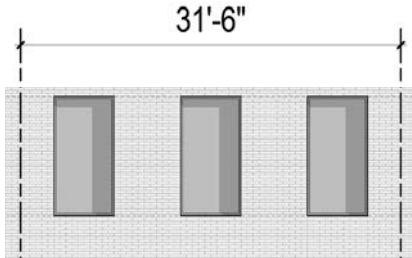


3/5/5/3/3/5/5

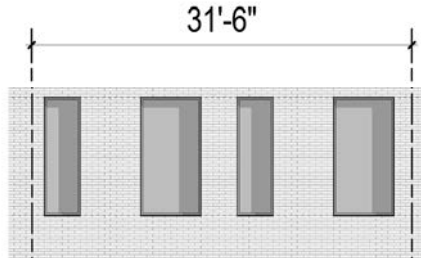


STAGGERED

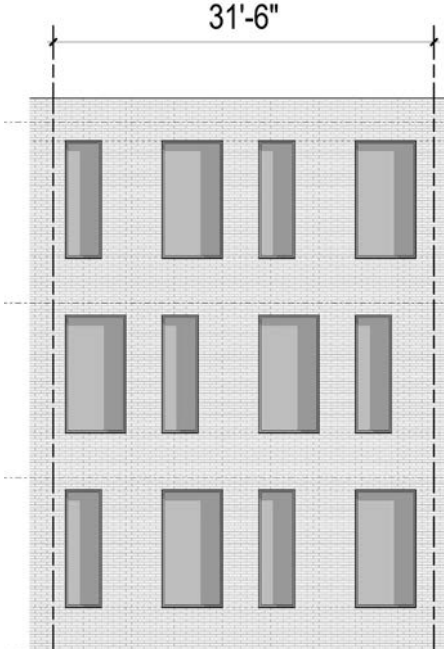
ARTICULATED FACADE



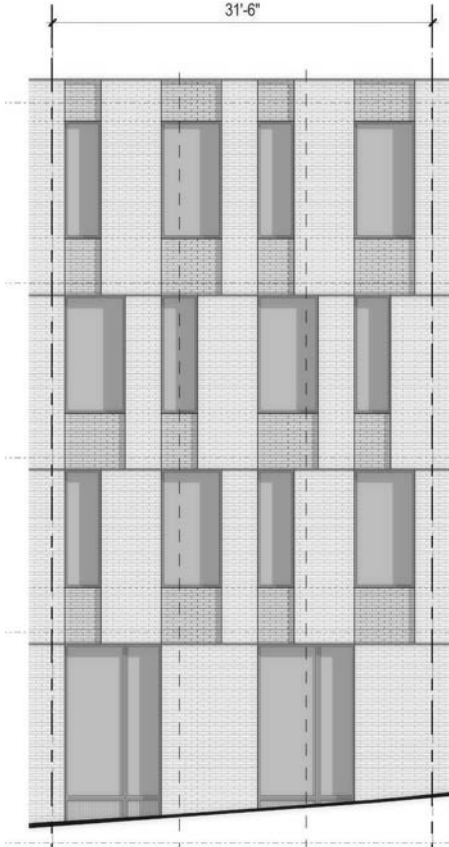
5/5/5/5/5



3/5/5/3/3/5/5



STAGGERED



SHELF ANGLES & SPANDRELS

VIEW FROM THE CRESCENT PATH



VIEW FROM THE CRESCENT PATH



VIEW FROM CAMPUS LANE



VIEW FROM CC-3



NORTH ELEVATION



EAST ELEVATION



SOUTH ELEVATION



WEST ELEVATION



DISCUSSION

