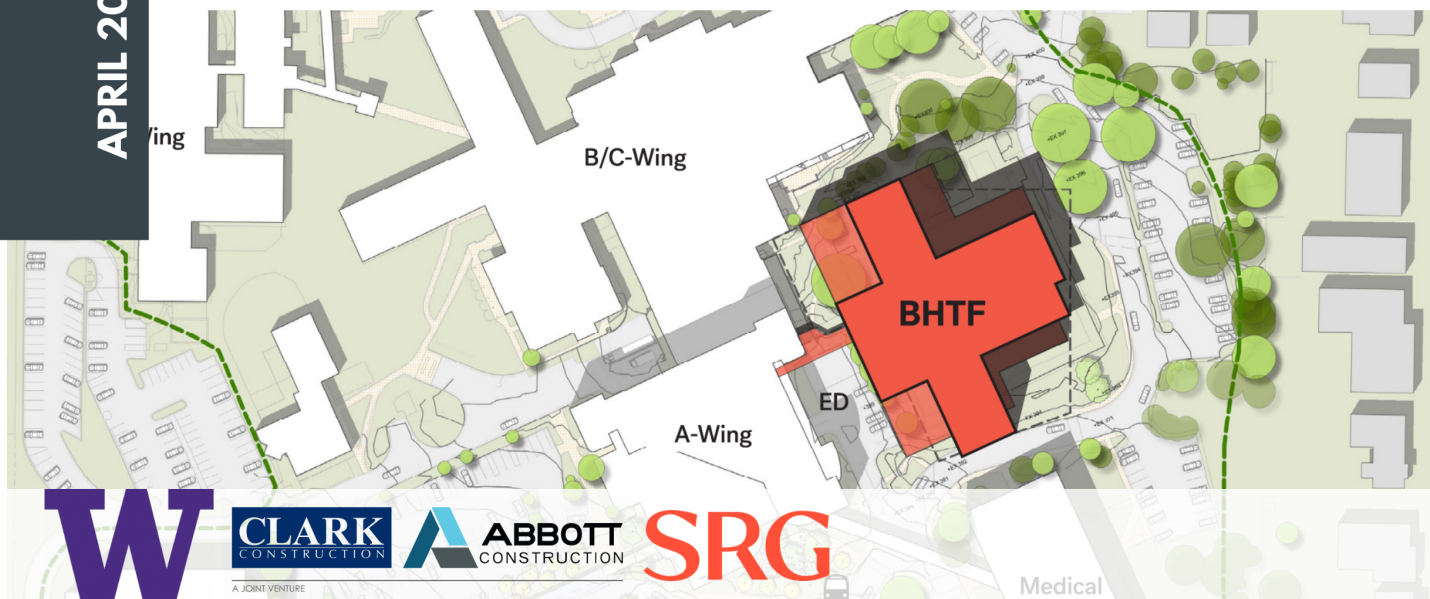


CONSTRUCTION BULLETIN

UW Medicine Behavioral Health Teaching Facility

1550 N 115th St. Seattle, WA 98133

APRIL 2021



The purpose of this bulletin is to inform staff, patients, visitors and the neighbors close to the University of Washington Medical Center Northwest campus about the Behavioral Health Teaching Facility (BHTF) construction project. This bulletin will be published quarterly during the design phase and monthly during the construction phase. Please see the webpage for more information about the project, construction logistics and the milestone schedule. <https://facilities.uw.edu/projects/behavioral-health-teaching-facility>

CONTACT LIST

Construction Contacts

Jeannie Natta

Project Manager, Project Delivery Group, UW Facilities
jnatta@uw.edu | (206) 724-5304

Jason Stordahl

Construction Manager, Project Delivery Group, UW Facilities
stordj@uw.edu | (206) 949-2291

Michael Rechnitz

Project Executive, Clark|Abbott General Contractor
michael.rechnitz@clarkabbottjv.com | (805) 585-0546

Matthew Dunaway

Project Manager, Clark | Abbott General Contractor
matthew.dunaway@clarkabbottjv.com | (425) 471-9713

UW Medical Center Community Liason

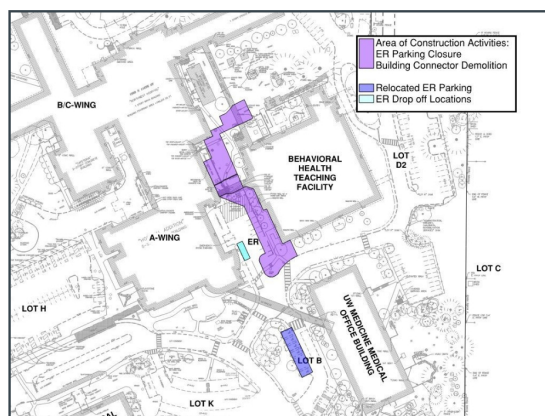
Pam Renna

Associate Administrator, UW Medical Center
rpamela@uw.edu | (206) 668-1700

CONSTRUCTION ACTIVITIES

The enabling projects are complete, resulting in a new Modular Data Center and a renovation to the interior of the Medical Arts Building. Current D-Wing occupants and services will be relocated by the end of March.

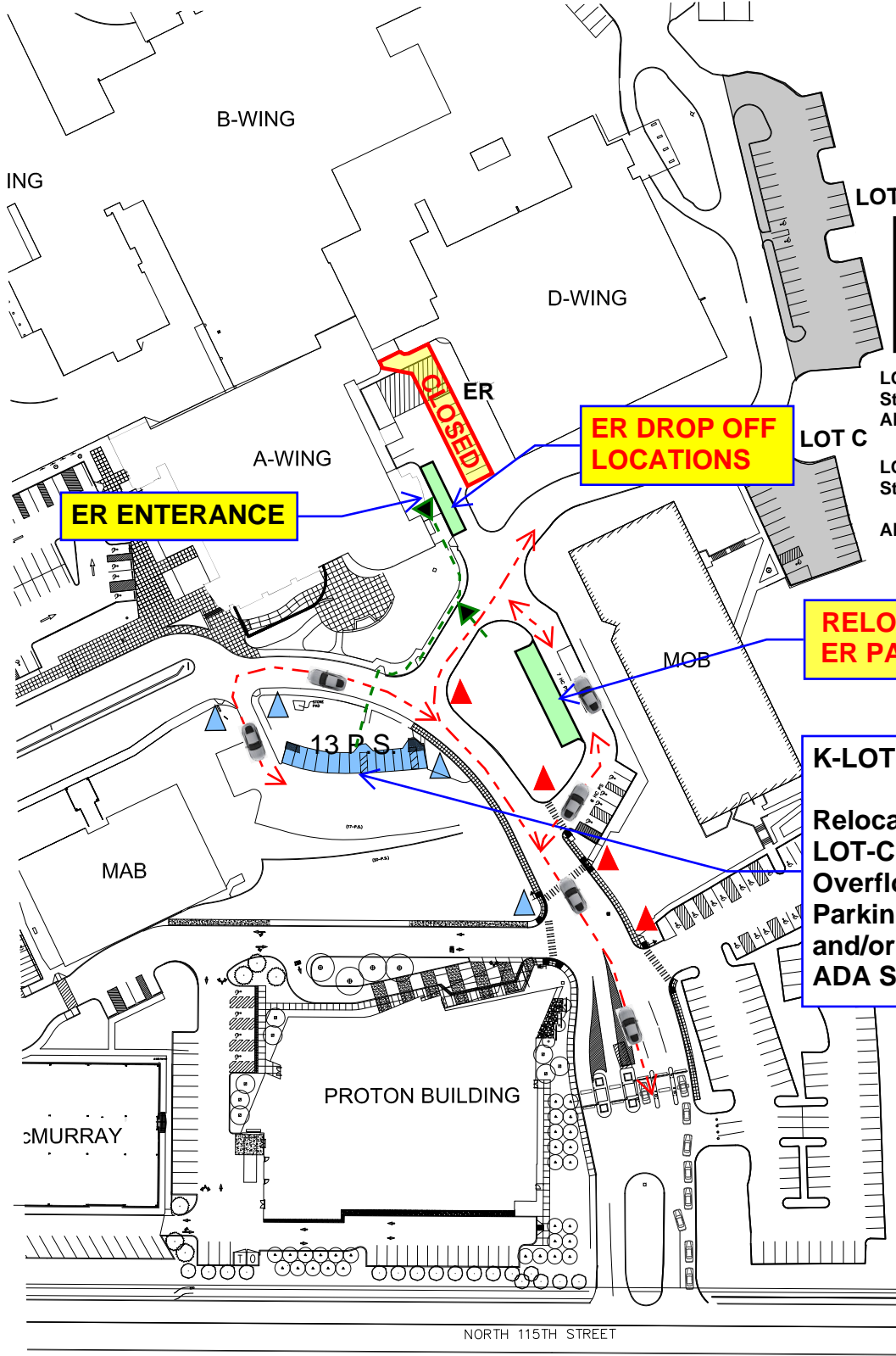
Starting April 5, 2021 the construction site will mobilize with site fencing around the D-Wing perimeter, exceptional tree protection and infection prevention and control barriers established at the A-D Wing connector. Abatement of the Building Connector will start on April 19, 2021 with demolition scheduled for April 27, 2021. The north parking spaces in the ER drop off and parking area will be closed on April 26, 2021 and will remain closed for the duration of the project to ensure public safety. Additional drop off zones will be created in the ER area and overflow parking will be relocated to Lot B, adjacent to the Medical Office Building (MOB). Additional parking lot closures include the C-Lot closure scheduled from May 5, 2021 to May 24, 2021 and the D-Lot closure from May 26, 2021 to August 10, 2021.



PROJECT OVERVIEW

The new Behavioral Health Teaching Facility will be a one-of-a-kind fully integrated welcoming and healing environment for individuals struggling with serious physical and behavioral health problems. The building will support a full continuum of clinical services ranging from effective medication management and psychotherapies to state-of-the-art neuromodulation treatments, medical and surgical care for individuals with medical and behavioral health disorders. The building will also become the home for an interdisciplinary training and workforce development program that is focused on preparing and supporting the next generation of behavioral health providers for Washington State.

If you have any questions about the upcoming work at UWMC Northwest, please feel free to contact us and we would be glad to provide any additional information. Please see attached the Parking Phasing Plan, regarding the temporary parking lot closures.



| ACTIVITY | Start | Finish | Duration |
|--------------------------|-----------------|-----------------|------------|
| <i>ER Parking Closed</i> | <i>04/26/21</i> | <i>08/31/23</i> | <i>857</i> |
| <i>C-Lot Closure</i> | <i>05/05/21</i> | <i>05/24/21</i> | <i>19</i> |
| <i>D-Lot Closure</i> | <i>05/26/21</i> | <i>08/10/21</i> | <i>76</i> |

LOT D:
 Standard Parking Stalls: 27
 ADA Parking Stalls: 4

LOT C:
 Standard Parking Stalls: 14*
 *ER Overflow: 6
 ADA Parking Stalls: 1

RELOCATED ER PARKING

**K-LOT:
 Relocated LOT-C ER Overflow Parking Stalls and/or MOB ADA Stalls**

 **ER Parking Signage**

 **ER Overflow Parking Signage**