

# CONSTRUCTION BULLETIN

## UW Medicine Center for Behavioral Health and Learning

1550 N 115th St. Seattle, WA 98133

March 2024



Rendering of BHTF, SRG Partnership

The purpose of this bulletin is to inform staff, patients, visitors and the neighbors close to the University of Washington Medical Center Northwest campus about the Center for Behavioral Health and Learning construction project. This bulletin will be published quarterly during the design phase and monthly during the construction phase. Please see the webpage for more information about the project, construction logistics and the milestone schedule. <https://facilities.uw.edu/projects/behavioral-health-teaching-facility>

## CONTACT LIST

### Construction Contacts

Jeannie Natta  
Project Manager, Project Delivery Group, UW Facilities  
[jnatta@uw.edu](mailto:jnatta@uw.edu) | (206) 724-5304

Jon Ericson  
Construction Manager, Project Delivery Group, UW Facilities  
[jerics@uw.edu](mailto:jerics@uw.edu) | (206) 999-0367

Nick Moore  
Senior Superintendent, Clark Construction  
[nick.moore@clarkconstruction.com](mailto:nick.moore@clarkconstruction.com) | (760) 330-0676

### UW Medical Center Community Liaison

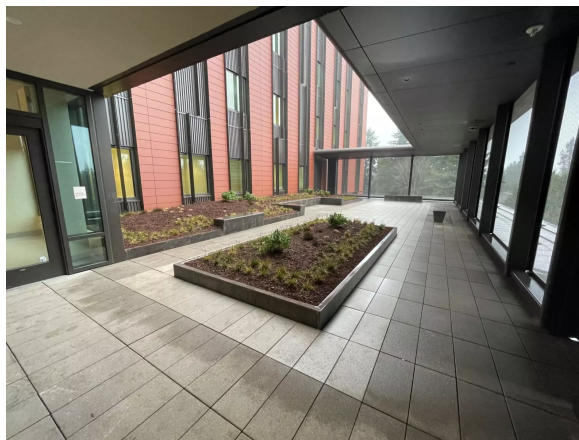
Pam Renna  
Associate Administrator, UW Medical Center  
[rpamela@uw.edu](mailto:rpamela@uw.edu) | (206) 668-1700

## CONSTRUCTION ACTIVITIES

Building construction is complete. The remaining work includes completion of minor site finishes and removal of construction materials and equipment. Street improvements to N 115th and to N 120th Street will continue through the Spring of 2024. Public parking on N 120th Street is closed for street improvements. Flaggers will be present during road closures due to construction activities and the roads will be fully open when work crews are off site.

We appreciate your patience with potential traffic and noise disturbance.

The photo below shows the new level four activity terrace.



If you have any questions about the upcoming work at UWMC Northwest, please feel free to contact us and we would be glad to provide any additional information.

## PROJECT OVERVIEW

The new Center for Behavioral Health and Learning will be a one-of-a-kind fully integrated welcoming and healing environment for individuals struggling with serious physical and behavioral health problems. The building will support a full continuum of clinical services ranging from effective medication management and psychotherapies to state-of-the-art neuromodulation treatments, medical and surgical care for individuals with medical and behavioral health disorders. The building will also become the home for an interdisciplinary training and workforce development program that is focused on preparing and supporting the next generation of behavioral health providers for Washington State.