

December 2023

CONSTRUCTION BULLETIN

UW Medicine Center for Behavioral Health and Learning

1550 N 115th St. Seattle, WA 98133



Rendering of BHTF, SRG Partnership

The purpose of this bulletin is to inform staff, patients, visitors and the neighbors close to the University of Washington Medical Center Northwest campus about the Center for Behavioral Health and Learning construction project. This bulletin will be published quarterly during the design phase and monthly during the construction phase. Please see the webpage for more information about the project, construction logistics and the milestone schedule. <https://facilities.uw.edu/projects/behavioral-health-teaching-facility>

CONTACT LIST

Construction Contacts

Jeannie Natta
Project Manager, Project Delivery Group, UW Facilities
jnatta@uw.edu | (206) 724-5304

Jon Ericson
Construction Manager, Project Delivery Group, UW Facilities
jericson@uw.edu | (206) 999-0367

Nick Moore
Senior Superintendent, Clark Construction
nick.moore@clarkconstruction.com | (760) 330-0676

UW Medical Center Community Liaison

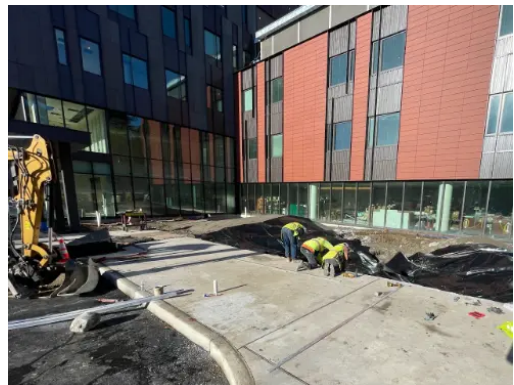
Pam Renna
Associate Administrator, UW Medical Center
rpamela@uw.edu | (206) 668-1700

CONSTRUCTION ACTIVITIES

The building is on track for completion by the end of January 2024. Site improvements to the campus loop road, parking lots C, D and N 120th Street will continue through January with some landscaping continuing through the Spring of 2024. Commissioning of the generator, asphalt paving and large vehicles may sporadically emit odors that may travel beyond the hospital campus. The 2 hour public parking on N 120th Street is closed for street improvements. Flaggers will be present during road closures due to construction activities and the roads will be fully open when work crews are off site.

When needed, crews may work on Saturdays between 9am and 7pm in accordance with the approved Construction Management Plan. We appreciate your patience with potential traffic and noise disturbance.

The photo below is of some of the newly poured sidewalks and preparation for the new plantings.



If you have any questions about the upcoming work at UWMC Northwest, please feel free to contact us and we would be glad to provide any additional information.

PROJECT OVERVIEW

The new Center for Behavioral Health and Learning will be a one-of-a-kind fully integrated welcoming and healing environment for individuals struggling with serious physical and behavioral health problems. The building will support a full continuum of clinical services ranging from effective medication management and psychotherapies to state-of-the art neuromodulation treatments, medical and surgical care for individuals with medical and behavioral health disorders. The building will also become the home for an interdisciplinary training and workforce development program that is focused on preparing and supporting the next generation of behavioral health providers for Washington State.